

**UNIVERSITY
OF TORONTO**



2002

**Facts &
Figures**

Facts and Figures is prepared annually by the Office of the Vice-Provost, Planning and Budget. **Facts and Figures** provides answers to some of the most frequently asked questions about the University. It is designed and organized to serve as a useful and reliable source of reference information from year to year.

The reader of **Facts and Figures** should take care when attempting to use the enclosed information comparatively. While some definitions are common to other universities, many others are not. Our Office maintains some comparative databases and has access to some others. Please contact us for assistance in using **Facts and Figures** comparatively.

Each year we try to improve **Facts and Figures** to make it as useful as possible. We are always grateful for suggestions for improvement.

Facts and Figures can also be accessed on the World Wide Web at www.library.utoronto.ca/facts/

Other Official Publications of the University:

- **University of Toronto, Research and International Relations**

Annual Report 2002 (not available at time of print. See

<http://www.rir.utoronto.ca/utindex.html> for updated link)

- **Performance Indicators for Governance Report, September 2002**

(<http://www.utoronto.ca/provost/perf2002/index.htm>)

- **University of Toronto National Report, 2002**

(<http://www.nationalreport.utoronto.ca/>)

- **University of Toronto Condensed Financial Report, April 30, 2002**

(<http://www.finance.utoronto.ca/finstat02/finstat02.htm>)

Corinne Pask-Aubé is the manager of **Facts and Figures** for 2002. She deserves our gratitude for her efforts. She can be reached at (416) 978-7367 or through e-mail at corinne.pask@utoronto.ca.

Derek McCammond
Vice-Provost, Planning and Budget
Room 240, Simcoe Hall
27 King's College Circle
Toronto, Ontario
M5S 1A1

CONTENTS

Part A	General	3
	1. Organization of Senior Administration	
	2. Major Academic Divisions	
	3. Degrees, Diplomas and Certificates Offered	
Part B	Finances	13
	1. Statement of Operations	
	2. Changes in Surplus/Deficit	
	3. Operating Fund Expense Summary	
	4. Operating Fund: Academic Expense Summary	
	5. Restricted Funds	
Part C	Research	21
	1. Research Population	
	2. Revenue from Externally Sponsored Research	
	3. Academic Linkages with International Institutions	
	4. Technology Transfer Activities:	
	a) Invention Disclosures	
	b) Spin-off Companies	
	c) Industrial Contracts & Grants	
	d) Government Funding Leveraged by Industrial Collaboration	
Part D	Students	27
	1. Enrolment by Faculty/College	
	2. Enrolment: Age and Gender Balance	
	3. International Student Enrolment by Geographic Origin	
	4. International Students - Geographic Origin: 5 Year Trend	
	5. Ten Year Enrolment Trends, All Students	
	6. Gender Balance of Graduate and Undergraduate Enrolments by Field of Study	
	7. Undergraduate Intake by Faculty	
	8. Graduate Intake by Faculty	
	9. Total Intake	
	10. Degrees Awarded by Gender	
	11. Tuition Fees:	
	a) Domestic and International Students	
	b) Self-Funded Programs	
	c) OISE/UT Schools	
Part E	Graduates	47
	1. Graduate Counts by Region	
	2. Graduate Donations to the University by Region	
	3. Overall Fundraising Achievement	
	4. Overall Fundraising Achievement: Source of Donations	
	5. Graduates by College or Faculty Affiliation	

CONTENTS (continued)

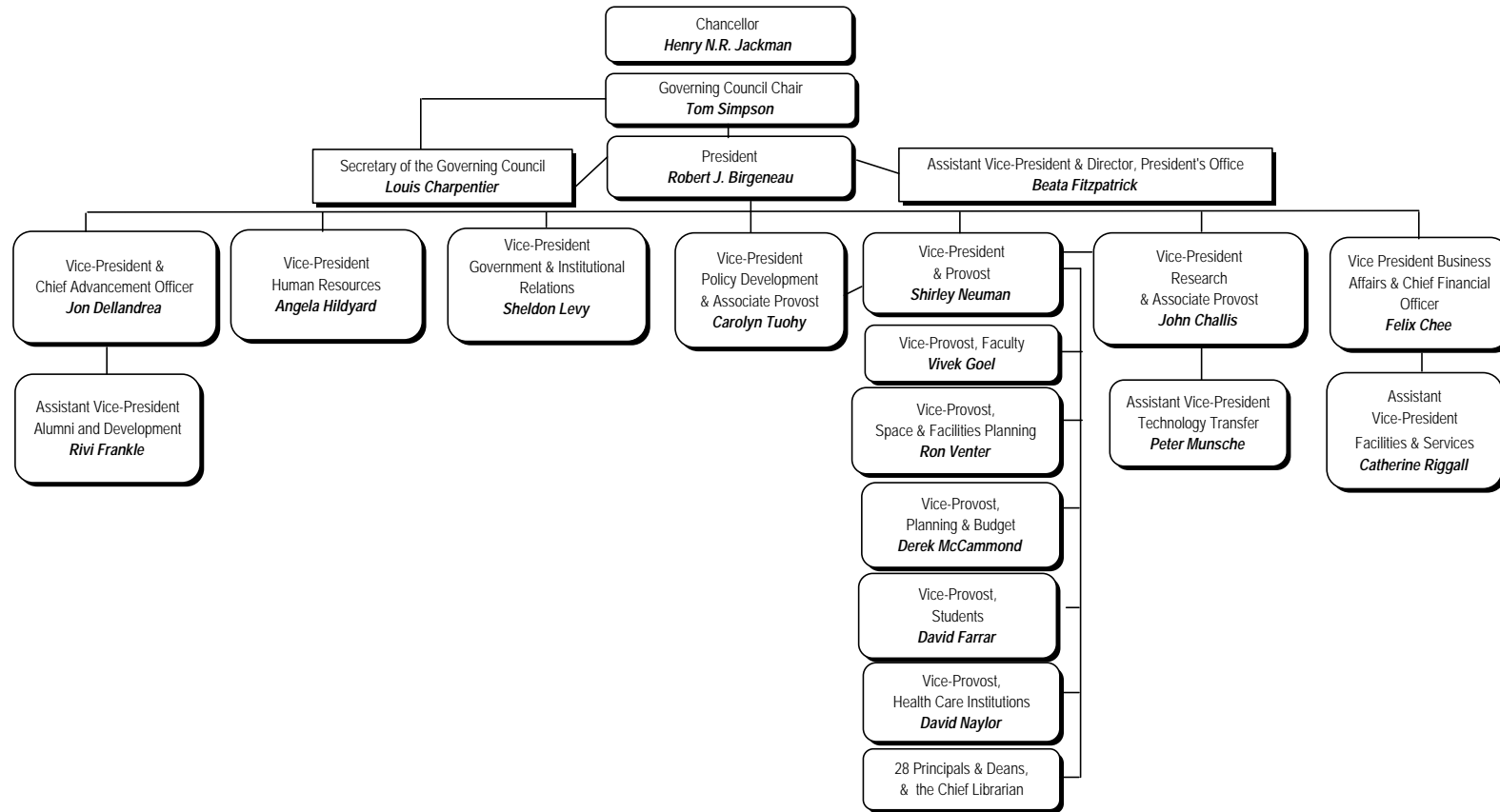
Part F Student Awards	53
1. Graduate Student Support by Source	
2. Graduate Student Support by S.G.S. Division Undergraduate Student Support : Admission Scholarships,	
3. In-Course Scholarships and Bursaries by Faculty and College	
4. OSAP and University of Toronto Advanced Planning for Students program (UTAPS) by Faculty and College	
Part G Faculty and Administrative Staff	59
1. Distribution of Full-Time Appointed Tenured/Tenure Stream Faculty by Major Division and Main Appointment	
2. Distribution of Full-Time Tenured/Tenure Stream Faculty by Rank and Gender	
3. Age Distribution of Tenured/Tenure Stream Faculty	
4. Distribution of Full and Part Time (>=25%) Academic Staff and Librarians by Rank and Gender	
5. Distribution of Full and Part-Time Administrative and Union Staff	
6. Operating Fund Full-Time Equivalent Staff	
Part H Library	67
1. Library Collections	
2. Number of Loans	
3. Number of Computers in the Library	
4. Digital Library E-Resources	
5. Number of Electronic Articles Downloaded	
Part I Physical Plant	71
1. Usage of Assignable Space	
2. Physical Facts :	
a) Area of U of T Properties	
b) Number of Parking Spaces	
c) Number of Buildings and Gross Square Metres	
d) Public Assembly Facilities	
e) Number of Places in Student Residences	
Part J Computing and Communications	77
1. Number of UTORmail Accounts at Year End	
2. Messages Delivered by UTORmail Post Office	
3. Number of Web Transactions	
4. Institutional Internet Dial-in Service	
a) Dial-in Modem	
b) U of T/Bell Sympatico High Speed Edition (HSE)	
5. Campus Wireless Network	
6. Usage of Electronic Student Services	

Part A

General

Organization of Senior Administration	4
Major Academic Divisions	5
Degrees, Diplomas and Certificates Offered	9

ORGANIZATION OF SENIOR ADMINISTRATION
2002-2003



MAJOR ACADEMIC DIVISIONS

2002-2003

Faculty of Applied Science and Engineering

Aerospace Studies, Institute for
Biomaterials and Biomedical Engineering, Institute of
Chemical Engineering and Applied Chemistry
Civil Engineering
Edward S. Rogers Sr. Electrical and Computer Engineering
Engineering Science, Division of
Environmental Engineering, Division of
Materials Science and Engineering
Mechanical and Industrial Engineering
Mineral Engineering, Lassonde Program

Faculty of Architecture, Landscape, and Design

Faculty of Arts and Science - Departments

Anthropology
Astronomy & Astrophysics
Botany
Chemistry
Classics
Commerce & Finance Program
Comparative Literature Centre
Computer Science
East Asian Studies
Economics
English
Environment Division
Fine Art
French
Geography
Geology
Germanic Languages & Literatures
History
History & Philosophy of Science & Technology, Institute for
Human Biology Division
Italian Studies
Linguistics
Mathematics
Medieval Studies Centre
Near & Middle Eastern Civilizations
Philosophy
Physics
Political Science
Psychology
Religion, Centre for the Study of
Religion
Slavic Languages & Literatures
Sociology
Spanish & Portuguese
Statistics
Zoology

MAJOR ACADEMIC DIVISIONS

2002-2003 (continued)

Faculty of Arts and Science - Colleges (St. George Campus)

Constituent Colleges:

- Innis College
- New College
- University College
- Woodsworth College

Federated Colleges:

- St. Michael's College
- Trinity College
- Victoria College

School of Continuing Studies

Faculty of Dentistry

Faculty of Forestry

Centres and Institutes

- Asia-Pacific Studies, Joint Centre for
- Criminology, Centre of
- Drama, Centre for the Study of
- Environmental Studies, Institute for
- Human Development, Life Course and Aging, Institute for
- Industrial Relations, Centre for
- International Relations, Centre for
- Knowledge Media Design Institute
- Museum Studies Program
- Policy Analysis, Institute for
- Russian and East European Studies, Centre for
- South Asian Studies, Centre for
- Theoretical Astrophysics, Canadian Institute for
- Urban and Community Studies, Centre for

School of Graduate Studies

- Division I - Humanities
- Division II - Social Sciences
- Division III - Physical Sciences
- Division IV - Life Sciences

Faculty of Information Studies

- Mcluhan Program in Culture and Technology

Faculty of Law

Joseph L. Rotman School of Management

MAJOR ACADEMIC DIVISIONS

2002-2003 (continued)

Faculty of Medicine

Anaesthesia
Anatomy and Cell Biology
Banting and Best Department of Medical Research
Biochemistry
Biomaterials and Biomedical Engineering, Institute of
Community Health
Family and Community Medicine
Health Policy, Management and Evaluation
Immunology
Laboratory Medicine and Pathobiology
Medical Biophysics
Medical Genetics and Microbiology
Medical Imaging
Medical Science, Institute of
Medicine
Nutritional Sciences
Obstetrics and Gynaecology
Occupational Therapy
Ophthalmology
Otolaryngology
Paediatrics
Pharmacology
Physical Therapy
Physiology
Psychiatry
Public Health Sciences
Radiation Oncology
Rehabilitation Science
Speech-Language Pathology
Surgery

Faculty of Music

History & Culture of Music
Music Education
Musical Theory & Composition
Opera
Performance
Canadian Music, Institute for
Canadian Music Education Research Centre

Faculty of Nursing

OISE/UT

Adult Education, Community Development
and Counseling Psychology
Curriculum, Teaching and Learning
Human Development and Applied Psychology
Sociology and Equity Studies in Education
Theory and Policy Studies in Education

MAJOR ACADEMIC DIVISIONS

2002-2003 (continued)

Leslie L. Dan Faculty of Pharmacy

Faculty of Physical Education and Health

Faculty of Social Work

Anti-Racism, Multiculturalism & Native Issues (AMNI) Initiative
Bell Canada Child Welfare Research Unit
Centre for Applied Social Research

Transitional Year Program

University of Toronto at Mississauga

Humanities
Social Sciences
Sciences

University of Toronto at Scarborough

Division of Humanities
Division of Life Sciences
Division of Management
Division of Mathematical Sciences
Division of Physical Sciences
Division of Social Sciences

Woodsworth College

Professional and International Programs
Millie Rotman Shime Academic Bridging Program
Millie Rotman Shime Pre-University Mathematics Program

DEGREES, DIPLOMAS AND CERTIFICATES OFFERED

2002-2003

UNDERGRADUATE AND FIRST PROFESSIONAL DEGREES

Faculty of Applied Science and Engineering:

Bachelor of Applied Science B.A.Sc.

Faculty of Arts and Science

St. George Campus:

Honours Bachelor of Arts Hon.B.A.

Honours Bachelor of Science Hon.B.Sc.

Bachelor of Commerce B.Com.

University of Toronto at Mississauga:

Honours Bachelor of Arts Hon.B.A.

Bachelor of Arts B.A.

Honours Bachelor of Science Hon.B.Sc.

Bachelor of Science B.Sc.

Bachelor of Commerce B.Com.

University of Toronto at Scarborough:

Honours Bachelor of Arts Hon.B.A.

Bachelor of Arts B.A.

Honours Bachelor of Science Hon.B.Sc.

Bachelor of Science B.Sc.

Bachelor of Business Administration B.B.A.

Faculty of Dentistry:

Doctor of Dental Surgery D.D.S.

Faculty of Law:

Juris Doctor J.D.

Faculty of Medicine:

Doctor of Medicine M.D.

Bachelor of Science, Radiation Science B.Sc.Rad.Sc.

Faculty of Music:

Bachelor of Music Mus.Bac.

Bachelor of Music in Performance Mus Bac.Perf.

Faculty of Nursing:

Bachelor of Science in Nursing B.Sc.N.

OISE/UT:

Bachelor of Education B.Ed.

Leslie L. Dan Faculty of Pharmacy:

Doctor of Pharmacy Pharm.D.

Bachelor of Science in Pharmacy B.Sc.Phm.

Faculty of Physical Education and Health:

Bachelor of Physical and Health Education B.P.H.E.

DEGREES, DIPLOMAS AND CERTIFICATES OFFERED

2002-2003 (continued)

UNDERGRADUATE AND FIRST PROFESSIONAL DIPLOMAS AND CERTIFICATES

Faculty of Dentistry:

Certificate of Qualification in Dentistry

Cert.Q.P.Dent.

Faculty of Music:

Artist Diploma

Art.Dip.Mus.

Faculty of Nursing:

Certificate as a Nurse Practitioner
(Primary Health Care)

Cert.N.P.(PHC)

OISE/UT:

Diploma in Technical Education

Dip.T.Ed.

University of Toronto at Scarborough:

Certificate in Business

Cert.Bus.

Woodsworth College:

Certificate in Human Resource Management

C.H.R.M.

Certificate in Teaching English as a Second Language

C.T.E.S.L.

DEGREES, DIPLOMAS AND CERTIFICATES OFFERED

2002-2003 (continued)

GRADUATE DEGREES

School of Graduate Studies:

Juris Doctor and Doctor of Philosophy	J.D./Ph.D.
Juris Doctor and Master of Business Administration	J.D./M.B.A.
Juris Doctor and Master of Arts (Economics)	J.D./M.A.
Juris Doctor and Collaborative MA in International Relations	J.D./M.A.
Juris Doctor and Master of Social Work	J.D./M.S.W.
Doctor of Dentistry and Doctor of Philosophy	D.D.S./Ph.D.
Doctor of Education	Ed.D.
Doctor of Juridical Science	S.J.D.
Doctor of Medicine and Doctor of Philosophy	M.D./Ph.D.
Doctor of Music	Mus. Doc.
Doctor of Philosophy	Ph.D.
Master of Applied Science	M.A.Sc.
Master of Architecture	M.Arch.
Master of Arts	M.A.
Master of Arts in Teaching	M.A.(T.)
Master of Biotechnology	M.Biotech
Master of Business Administration	M.B.A.
Master of Business Administration and Master of Arts in Russian and East European Studies	M.B.A./M.A.(REES)
Master of Business Administration and Master of Nursing	M.B.A./M.N.
Master of Business Administration and Jeffrey Skoll Bachelor of Applied Science	M.B.A./B.A.Sc.
Master of Education	M.Ed.
Master of Engineering	M.Eng.
Master of Engineering in Design and Manufacturing	M.Eng.D.M.
Master of Engineering in Telecommunications	M.Eng.Tel.
Master of Forest Conservation	M.F.C.
Master of Health Science	M.H.Sc.
Master of Health Science in Health Administration/ Master of Social Work	M.H.Sc./M.S.W.
Master of Industrial Relations	M.I.R.
Master of Information Studies	M.I.St.
Master of Landscape Architecture	M.L.A.
Master of Laws	LL.M.
Master of Management & Professional Accounting	M.M.P.A.
Master of Mathematical Finance	M.M.F.
Master of Museum Studies	M.M.St.
Master of Music	Mus.M.
Master of Nursing	M.N.
Master of Science	M.Sc.
Master of Science in Biomedical Communication	M.Sc.BMC.
Master of Science in Forestry	M.Sc.F.
Master of Science in Occupational Therapy	M.Sc.O.T.
Master of Science in Planning	M.Sc.Pl.
Master of Science in Physical Therapy	M.Sc.P.T.
Master of Social Work	M.S.W.
Master of Spatial Analysis	M.S.A.
Masters in Studies in Law	M.S.L.
Master of Teaching	M.T.
Master of Urban Design	M.U.D.
Master of Urban Design Studies	M.U.D.S.

DEGREES, DIPLOMAS AND CERTIFICATES OFFERED

2002-2003 (continued)

GRADUATE DEGREES WITH ADVANCED SPECIALTY TRAINING, GRADUATE DIPLOMAS AND GRADUATE CERTIFICATES

Faculty of Applied Science and Engineering:

Professional Pilot and Aviation Management Diploma

Dip.P.P.A.M.

Faculty of Dentistry:

M.Sc. Advanced Dental Specialty Degree Program:

Dental Anaesthesia
Dental Public Health
Endodontics
Oral Pathology
Oral Pathology and Medicine
Oral Radiology
Oral and Maxillofacial Surgery and Anaesthesia
Orthodontics
Paediatric Dentistry
Periodontology
Prosthodontics

Faculty of Medicine:

Diploma in Child Psychiatry
Diploma in Clinical Chemistry
Diploma in Industrial Health
Diploma in Medical Microbiology
Diploma in Ophthalmic Science
Diploma in Public Health

D.Child Psych.
D.Cl.Chem.
D.I.H.
D.M.M.
D.Oph.Sci.
D.P.H.

Faculty of Music:

Diploma in Operatic Performance
Advanced Certificate in Performance

Dip.Op.Perf.
Adv.Cert.Perf.

Faculty of Nursing:

Post Masters Nurse Practitioners Diploma

Dip.N.P.

Faculty of Social Work:

Diploma in Social Work Research

Res.Dip.S.W.

OISE

Diploma Program in Holocaust & Genocide Education

Josph L. Rotman School of Management

Advanced Program in Human Resources Management
Advanced Program in Managing Strategic Change
Certificate in Aerospace Management
Diploma in Aerospace Management
Diploma in Investigative & Forensic Accounting

C.H.R.P.

D.I.F.A.

Part B

Finances

Statement of Operations	14
Changes in Surplus/Deficit	16
Operating Fund Expense Summary	17
Operating Fund: Academic Expense Summary	18
Restricted Funds	19

STATEMENT OF OPERATIONS*for the year ended April 30, 2002*

(with comparative figures for the year ended April 30, 2001)

(thousands of dollars)

	OPERATING FUND	ANCILLARY OPERATIONS	CAPITAL FUND	RESTRICTED FUNDS	TOTAL 2002	TOTAL 2001
Revenues						
Government Grants - general operations	\$396,227				\$396,227	\$380,675
Student Fees	328,020	4,654	1,052		333,726	299,753
Donations		115	6,116	28,073	34,304	44,266
Government & other grants - restricted purposes			23,533	187,683	211,216	131,146
Contract research	6,595			23,902	30,497	31,438
Investment income						
Endowments*	35,951			(49,586)	(13,635)	(8,010)
Other	(7,182)	1,209	4,954	2,417	1,398	30,150
Sales, services and sundry income	61,069	88,231	362		149,662	132,199
Total Revenues	\$820,680	\$94,209	\$36,017	\$192,489	\$1,143,395	\$1,041,617

STATEMENT OF OPERATIONS (continued)*for the year ended April 30, 2002*

(with comparative figures for the year ended April 30, 2001)

(thousands of dollars)

	OPERATING FUND	ANCILLARY OPERATIONS	CAPITAL FUND	RESTRICTED FUNDS	TOTAL 2002	TOTAL 2001
Expenses						
Academic	\$536,796			\$232,040	\$768,836	\$677,070
Academic services	46,114			1,092	47,206	42,943
Student services and assistance	108,474				108,474	85,572
Operation & maintenance of physical plant	69,097	8,525			77,622	76,849
Administration	43,927	8,840			52,767	46,890
Interest	8,481	4,953			13,434	4,914
Cost of sales and services		62,948			62,948	55,752
Contract research				23,902	23,902	23,208
Renovations	(202)		23,714	2,851	26,363	22,163
Amortization	1,982	4,237	55,165		61,384	60,237
Other	15,906		2,320	7,320	25,546	11,824
Total Expenses	\$830,575	\$89,503	\$81,199	\$267,205	\$1,268,482	\$1,107,422

CHANGES IN SURPLUS/DEFICIT*for the year ended April 30, 2002*

(with comparative figures for the year ended April 30, 2001)

(thousands of dollars)

	OPERATING FUND	ANCILLARY OPERATIONS	CAPITAL FUND	RESTRICTED FUNDS	TOTAL 2002	TOTAL 2001
Revenue less expenses	(\$9,895)	\$4,706	(\$45,182)	(\$74,716)	(\$125,087)	(\$65,805)
Net transfers between funds	(25,258)	(2,485)	17,065	10,678		
Transfer of capital assets	(25,505)		25,505			
Change in funds committed for specific purposes	53,639	(1,294)	23,300	(2,121)	73,524	14,958
Change in investment in capital assets		(1,464)	(25,846)		(27,310)	(5,879)
Transfers of donations to endowments				(4,710)	(4,710)	(8,393)
Transfer from internally and externally restricted endowments				70,869	70,869	57,574
Net change in surplus (deficit) for the year	(\$7,019)	(\$537)	(\$5,158)		(\$12,714)	(\$7,545)
Surplus (deficit), beginning of the year	(\$11,074)	(\$792)	(\$7,386)		(\$19,252)	(\$11,707)
Surplus (deficit), end of year	(\$18,093)	(\$1,329)	(\$12,544)		(\$31,966)	(\$19,252)

OPERATING FUND EXPENSE SUMMARY

Expense Summary for the year ended April 30, 2002
(with comparative totals for the year ended April 30, 2001)

(thousands of dollars)

	ACADEMIC SALARIES	OTHER SALARIES	STAFF BENEFITS	TOTAL SALARIES AND BENEFITS	SUPPLIES AND OTHER EXPENSES	SCHOLARSHIPS FELLOWSHIPS BURSARIES	TOTAL	ELIMINATIONS AND RECLASSIFICATIONS	TOTAL DIVISIONAL EXPENSE
Academic	\$282,646	\$114,635	\$75,230	\$472,511	\$103,875	\$303	\$576,690	(\$39,208)	\$537,481
Academic Services	8,143	24,572	5,912	38,628	32,621		71,249	(3,328)	67,921
Campus & Student Services		9,308	1,453	10,761	7,763	11	18,536	(1,807)	16,729
Student Assistance		2,117	254	2,371	1,607	86,544	90,522	1,369	91,891
Operation & Maintenance of Physical Plant		30,121	5,617	35,738	67,668		103,405	(33,285)	70,120
Administration		33,597	6,263	39,860	16,841	8	56,710	(10,938)	45,771
Interest								8,480	8,480
Renovations and Alterations					5,344		5,344	(5,546)	(202)
Amortization								1,982	1,982
Other Expenditures		4,539	1,265	5,804	12,972		18,776	(2,870)	15,906
Sub-Total	290,790	218,889	95,994	605,673	248,692	86,866	941,232	(85,152)	856,080
Eliminations	(20,562)	(12,171)	5,908	(26,825)	(\$58,326)		(85,152)		
Total Expenses	\$270,228	\$206,718	\$101,902	\$578,848	\$190,366	\$86,866	\$856,080		856,080
2000-01 Comparatives	\$281,753	\$176,278	\$67,945	\$525,976	\$179,391	\$68,646	\$774,013		\$774,013
Percentage Change	-4.09%	17.27%	49.98%	10.05%	6.12%	26.54%	10.60%		

Note: "Eliminations and Reclassifications" column represent external recovery of salaries and benefits as well as internal departmental changes between different functional groups.

**OPERATING FUND EXPENSES:
ACADEMIC EXPENSE SUMMARY**

For the year ending April 30, 2002

(thousands of dollars)

	NET EXPENSES
	2001-02
Arts & Science, Colleges & Schools:	
Arts & Science	\$134,119
Federated Colleges Block Grant	8,453
Graduate Centres & Institutes	7,323
Innis College	1,124
Mississauga, University of Toronto at - Academic	30,604
New College	1,067
Scarborough, University of Toronto at - Academic	31,748
School of Continuing Studies	10,382
School of Graduate Studies	3,620
Transitional Year Program	1,147
University College	2,003
Woodsworth College	12,319
Health Science Faculties/Schools:	
Dentistry	\$20,310
Medicine	78,081
Nursing	5,257
Pharmacy	6,778
Physical Education and Health	14,554
Other Professional Faculties:	
Applied Science & Engineering	\$48,673
Architecture, Landscape, and Design	4,962
Forestry	2,293
Information Studies	3,660
Law	12,090
Management	26,689
Music	7,535
OISE/UT	52,881
Social Work	4,238
Other Academic	\$5,571
Total Academic Expense	\$537,481

RESTRICTED FUNDS

for the year ending April 30, 2002 (with comparative figures for the year ended April 30, 2001)

(thousands of dollars)

	ENDOWMENT FUNDS		EXPENDABLE FUNDS	
	2002	2001	2002	2001
l'Anson Fund	\$5,577	\$11,587	\$4,164	\$3,777
Connaught Funds	98,581	107,923	6,592	5,737
Departmental Funds	116,537	117,952	110,712	104,056
Faculty Endowment Funds	324,464	322,525	8,107	7,351
General Endowment Funds	19,155	14,327	0	0
Miscellaneous Funds	31,533	33,464	14,982	15,261
Ontario Student Opportunity Trust Funds	304,639	327,158	22,857	20,133
Research Funds	117,444	72,799	143,726	172,125
Student Aid Funds	181,740	168,481	25,871	25,364
Supplementary Retirement Arrangement			91,962	85,226
Total University of Toronto	\$1,199,670	\$1,176,216	\$428,973	\$439,030
Affiliated Universities	162,237	163,709	na	na
Total	\$1,361,907	\$1,339,925	na	na

Part C

Research

Research Population	22
Revenue from Externally Sponsored Research	23
Academic Linkages with International Institutions	24
Technology Transfer Activities:	
a) Invention Disclosures	25
b) Spin-off Companies	25
c) Industrial Contracts & Grants	26
d) Government Funding Leveraged by Industrial Collaboration	26

RESEARCH POPULATION

September 2002

	HUMANITIES	SOCIAL SCIENCES	PHYSICAL SCIENCES	LIFE SCIENCES	TOTAL
Full-Time Faculty	425	617	517	797	2,356
Part-Time Faculty	21	17	24	189	251
Status-Only Faculty	36	101	127	2,437	2,701
Full-Time Research Associates	4	7	79	73	163
Part-Time Research Associates	1	3	10	4	18
Post-Doctoral Fellows	13	18	222	304	557
Graduate Students	1,316	4,423	2,005	2,880	10,624

Notes:

1. Numbers shown here may differ from Full Time Faculty counts in other tables because of selection criteria for inclusion in the research population.
2. Faculty includes professorial ranks only.
3. Faculty members may have multiple appointments; in 2002, only the main appointment was counted in the research population.
4. The figure for Post-Doctoral Fellows for 2002 may be understated due to incomplete records.

REVENUE FROM EXTERNALLY SPONSORED RESEARCH

(thousands of dollars)

	1999-2000	2000-2001	2001-2002
University of Toronto			
Grants	\$180,584	\$232,899	\$212,711
Contracts	21,747	25,330	23,902
Donations	4,061	3,485	2,208
Subtotal	206,392	261,714	238,821
Overhead	8,796	19,160	39,067
Total, University of Toronto	\$215,188	\$280,874	\$277,888
Affiliated Hospitals*	\$195,603	\$207,583	207,583**
Grand Total	\$410,791	\$488,457	\$485,471**

* Overhead excluded.

** Estimate only, using last year's revenue figure for the Affiliated Hospitals

ACADEMIC LINKS BETWEEN THE UNIVERSITY OF TORONTO AND INTERNATIONAL INSTITUTIONS

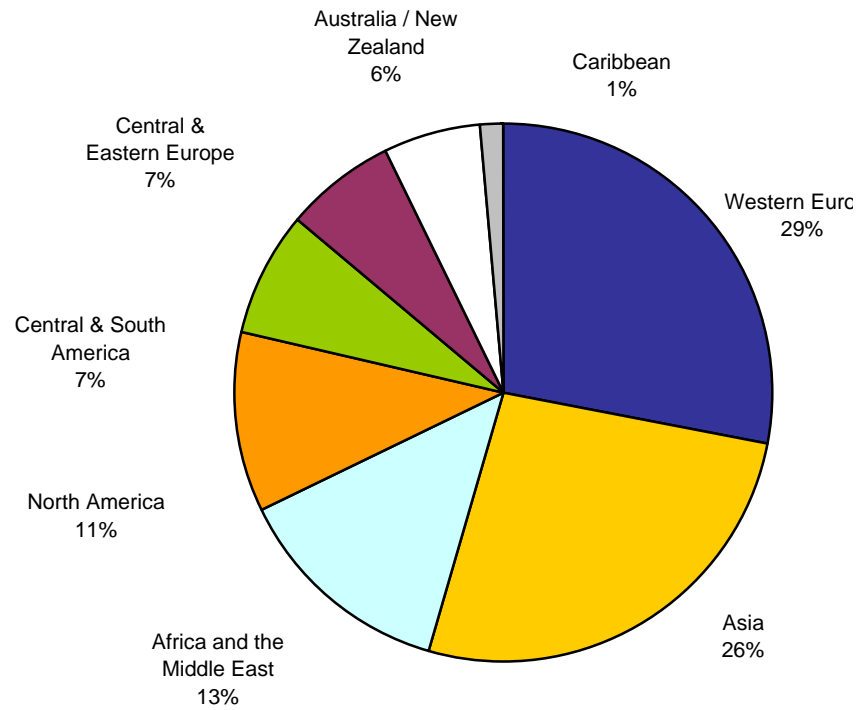
October 2002

REGION	NUMBER OF MOU'S*
Western Europe	38
Asia	36
Africa and the Middle East	18
North America	15
Central & South America	10
Central & Eastern Europe	9
Australia / New Zealand	8
Caribbean	2
Total	136

*MOU's: Memoranda of Understanding are formal arrangements between institutions, which outline how they plan to cooperate over a specified period of time (normally, five years).

The areas included in MOU's are:

- joint research activities,
- participation in each institution's seminars and academic meetings,
- exchange of academic materials,
- short-term academic programs, and
- exchange of students.



TECHNOLOGY TRANSFER ACTIVITIES

INVENTION DISCLOSURES

	1999-2000	2000-2001	2001-2002
Number of Inventions Disclosed*	127	123	122
Gross Royalties			
Innovations Foundation	\$1,446,747	\$3,260,247	\$1,356,033
Other	1,344,153	430,000	532,961
Total Gross Royalties	\$2,790,900	\$3,690,247	\$1,888,994

* Excluding affiliated hospital inventions.

SPIN-OFF COMPANIES

	1999-2000	2000-2001	2001-2002**
Number of Active companies	100	94	94
Number of Employees in Canada	3,700	4,264	4,264
Reported Annual Revenue	\$421,000,000	\$640,000,000	\$640,000,000

** As new survey was not conducted for 2001-02, 2000-01 data are shown.

TECHNOLOGY TRANSFER ACTIVITIES (continued)

INDUSTRIAL CONTRACTS AND GRANTS*

(April 2000 - March 2001)

Contracts	\$38,400,000
Grants	\$26,070,000
Total industrial research funding	\$64,470,000

GOVERNMENT FUNDING LEVERAGED BY INDUSTRIAL COLLABORATION*

Networks of Centres of Excellence (April 2000 - March 2001)	UofT participated in 17 of 18	\$12,280,000
Ontario Centres of Excellence (April 2000 - March 2001)	UofT participated in 4 of 4	\$8,400,000
Ontario Research and Development Challenge Fund (April 2000 - March 2001)		\$25,180,000
Federal Granting Councils: (April 2001 - March 2002)		
NSERC	University/Industry Programs**	\$3,110,000
CIHR	University/Industry Programs**	\$2,510,000
Total government funding leveraged by industrial collaboration		\$51,480,000

* Include the affiliated hospitals.

** Exclude the Networks of Centres of Excellence. Note that no university/industry funding was received from SSHRC by the University in 2001-02.

Part D

Students

Enrolment by Faculty/College	28
Enrolment: Age and Gender Balance	30
International Students Enrolment by Geographic Origin	31
International Students - Geographic Origin: 5 Year Trend	32
Ten Year Enrolment Trends, All Students	35
Gender Balance of Graduate and Undergraduate Enrolments by Field of Study	36
Undergraduate Intake by Faculty	37
Graduate Intake by Faculty	38
Total Intake	38
Degrees Awarded by Gender	39
Tuition Fees:	
a) Domestic and International Students	40
b) Self-Funded Programs	44
c) OISE/UT Schools	45

ENROLMENT BY FACULTY/COLLEGE

November 1, 2001

FACULTY/COLLEGE	UNDERGRADUATE			GRADUATE DEGREES/ GRADUATE DIPLOMAS			ALL STUDENTS		FTE STUDENTS		
	Full- Time	Part- Time	% Female	Full- Time	Part- Time	% Female	Total	% Female	Under- graduate	Graduate	Total
St. George Campus	15,972	6,264	60	2,335	174	48	24,745	58	17,692	2,387	20,079
Scarborough Campus	4,567	1,462	58	60	3	60	6,092	58	4,919	61	4,980
Mississauga Campus	4,613	1,743	61	97	1	54	6,454	61	5,024	97	5,122
Total Arts & Science	25,152	9,469	60	2,492	178	48	37,291	59	27,635	2,545	30,180
Applied Science & Engineering	3,485	145	28	1,006	297	22	4,933	26	3,559	1,095	4,655
Architecture, Landscape & Design	60	8	37	170	12	45	250	42	59	174	233
Dentistry	342	2	50	93	1	33	438	46	343	93	436
Forestry	---	---	na	88	0	48	88	48	---	88	88
Graduate Centres & Institutes	---	---	na	256	39	63	295	63	---	268	268
Information Studies	---	---	na	162	80	65	242	65	---	186	186
Law	551	5	52	73	9	52	638	52	535	76	611
Management	---	---	na	383	238	30	621	30	---	454	454
Management at UT Mississauga	---	---	na	89	0	67	89	67	---	89	89
Medicine	2,747	0	46	1,679	148	59	4,574	51	2,747	1,723	4,470
Music	405	31	58	131	7	61	574	58	439	133	572

ENROLMENT BY FACULTY/COLLEGE (continued)

November 1, 2001

FACULTY/COLLEGE	UNDERGRADUATE			GRADUATE DEGREES/ GRADUATE DIPLOMAS			ALL STUDENTS		FTE STUDENTS		
	Full- Time	Part- Time	% Female	Full- Time	Part- Time	% Female	Total	% Female	Under- graduate	Graduate	Total
Nursing	87	7	91	94	258	98	446	97	88	171	259
Occupational Therapy	39	0	100	59	0	93	98	96	39	59	98
OISE/UT	1,228	1,984	76	1,195	1,047	76	5,454	76	1,658	1,509	3,167
Pharmacy	570	6	70	56	8	59	640	69	548	58	607
Physical Education & Health	403	26	62	41	4	64	474	62	408	42	450
Physical Therapy	125	0	74	52	0	83	177	77	125	52	177
Social Work	---	---	na	272	46	86	318	86	---	286	286
Transitional Year Program	54	147	68	---	---	na	201	68	83	---	83
Woodworth Certificate and Diploma Programs	2	202	78	0	14	100	218	80	73	4	78
Grand Total	35,250	12,032	58	8,391	2,386	56	58,059	57	38,339	9,107	47,446

Note: Excludes 700 FTE students in the Toronto School of Theology and 30 Pharmacy residents.

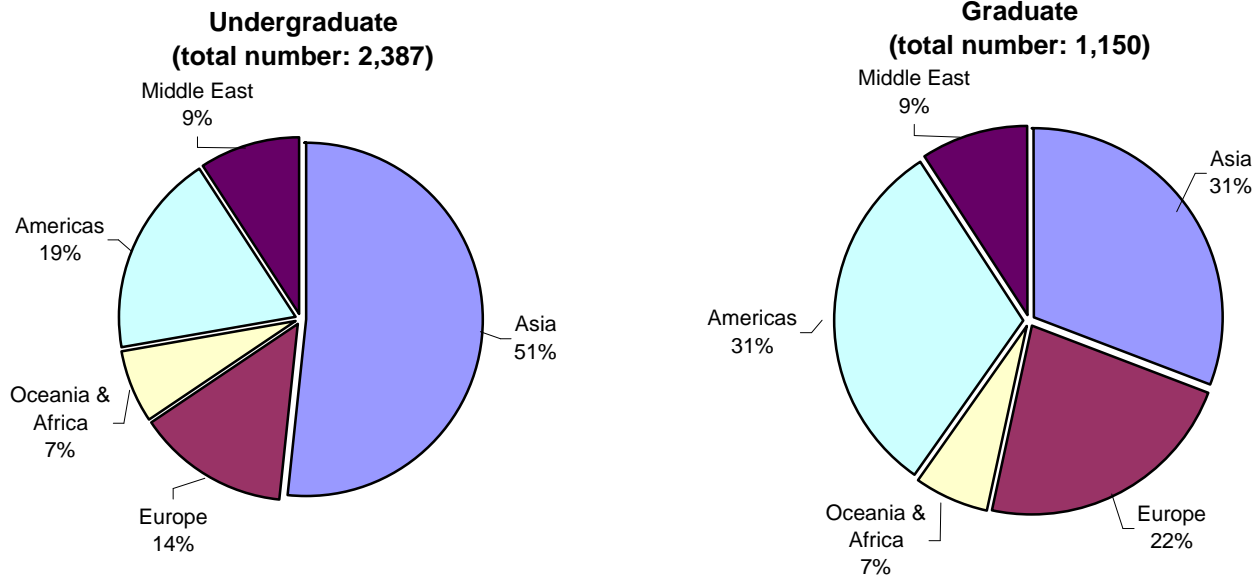
	HEADCOUNT	FTE
First Entry Undergraduate	39,385	32,183
Doctoral Stream Graduate	6,921	6,544
Undergraduate and Graduate Professional	11,753	8,718
Total	58,059	47,446

ENROLMENT: AGE AND GENDER BALANCE**1991 vs. 2001**

November 1

	1991			2001		
	Male	Female	Total	Male	Female	Total
Full-Time Undergraduate						
Number	15,767	16,688	32,455	15,396	19,843	35,239
Percent	48.6%	51.4%	100.0%	43.7%	56.3%	100.0%
Median Age	21.7	21.3	21.5	21.3	21.3	21.3
Full-Time Graduate						
Number	3,170	2,495	5,665	3,887	4,503	8,390
Percent	56.0%	44.0%	100.0%	46.3%	53.7%	100.0%
Median Age	28.0	28.0	28.0	28.7	28.3	28.5
Part-Time Undergraduate						
Number	5,097	8,197	13,294	4,658	7,368	12,026
Percent	38.3%	61.7%	100.0%	38.7%	61.3%	100.0%
Median Age	26.0	28.3	27.2	23.9	25.6	24.7
Part-Time Graduate						
Number	1,171	988	2,159	857	1,528	2,385
Percent	54.2%	45.8%	100.0%	35.9%	64.1%	100.0%
Median Age	31.0	31.9	31.4	33.5	35.8	34.7

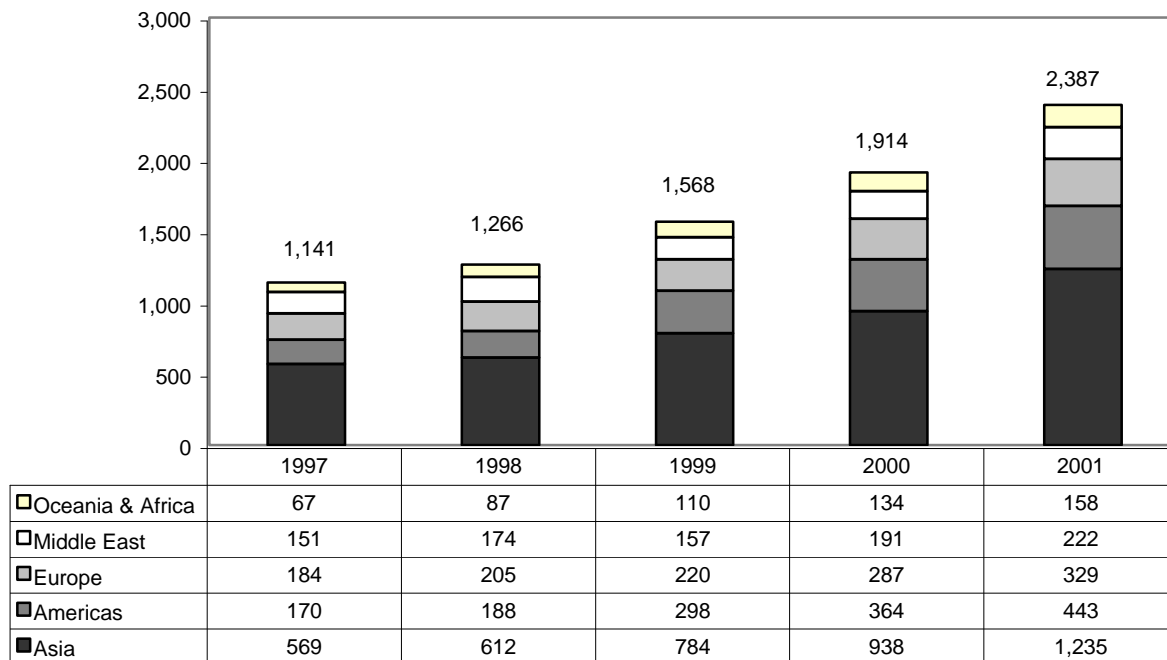
INTERNATIONAL STUDENTS BY GEOGRAPHIC ORIGIN
2001-2002



Note: In 2001-02, the largest percentage of undergraduate international students were from China including Hong Kong (17.1%) followed by the USA (11.5%).
In 2001-02, the largest percentage of graduate international students were from the USA (19.6%) followed by China including Hong Kong (15.1%).

**International Students - Geographic Origin: 5-Year Trend
1997 to 2001**
as at November 1

Undergraduate Students

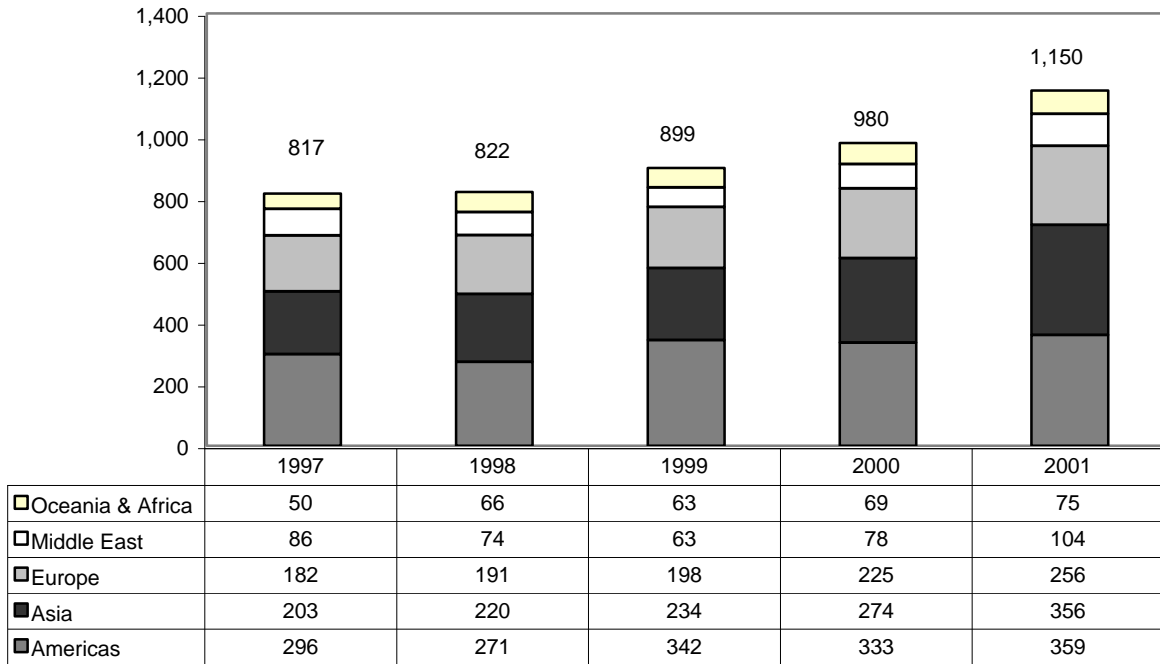


In 1997-98, the largest percentage of undergraduate international students were from Hong Kong (18.9%) followed by the USA (8.3%).

In 2001-02, the largest percentage of undergraduate international students were from China incl. Hong Kong (17.1%)

International Students - Geographic Origin: 5-Year Trend (continued)
as at November 1

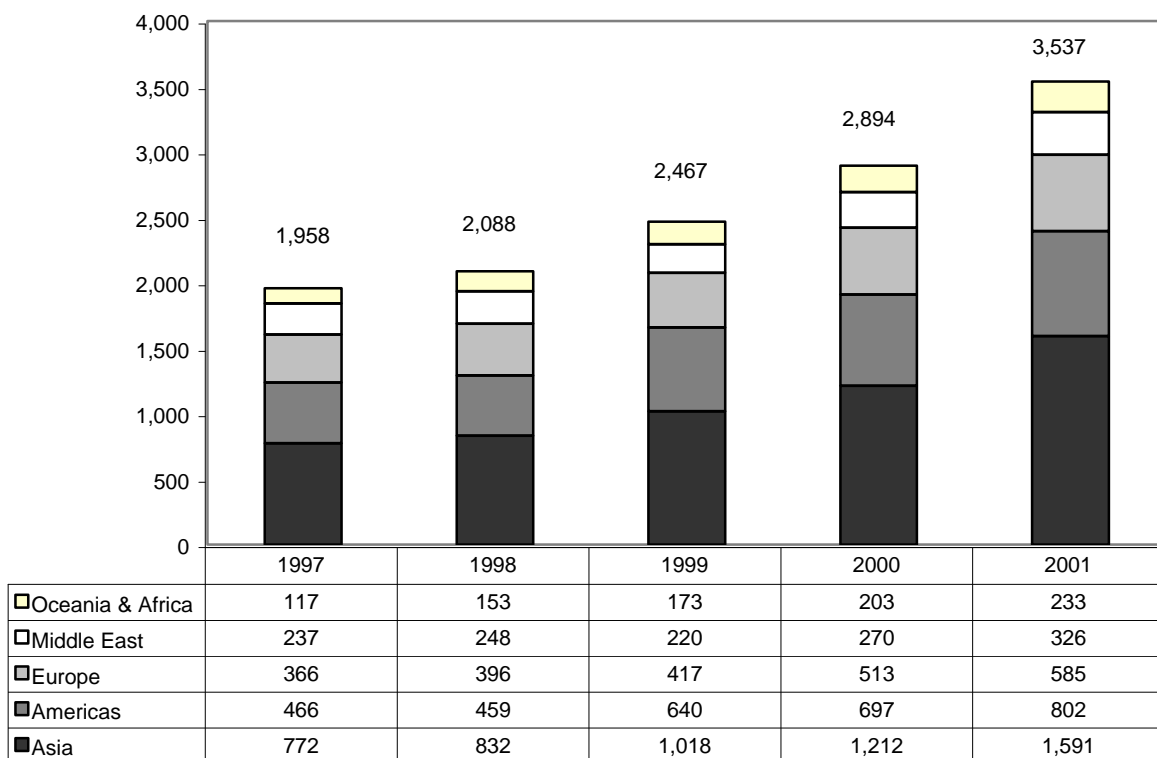
Graduate Students



Over one-third of graduate international students were from two countries - USA (27.8%) and China (7.8%).

International Students - Geographic Origin: 5-Year Trend (continued)
as at November 1

Total International Students



TEN YEAR ENROLMENT TRENDS, ALL STUDENTS

1992-2001

November 1

	TOTAL STUDENTS*				INTERNATIONAL STUDENTS			
	Undergraduate		Graduate		Undergraduate		Graduate	
	Total	% Female	Total	% Female	Total	% Female	Total	% Female
1992	44,371	54.4%	10,246	51.6%	2,294	47.6%	1,389	34.7%
1993	44,116	55.2%	10,262	52.2%	2,044	48.2%	1,265	36.7%
1994	42,352	55.3%	10,078	53.1%	1,622	46.3%	1,111	38.6%
1995	42,395	55.7%	9,881	53.5%	1,332	44.7%	933	36.0%
1996	42,359	56.3%	9,886	53.4%	1,203	43.2%	823	37.8%
1997	42,362	56.8%	9,874	54.1%	1,141	41.3%	817	37.0%
1998	43,139	56.9%	9,658	54.9%	1,266	43.3%	822	39.1%
1999	44,234	56.8%	9,898	54.8%	1,568	44.4%	899	40.6%
2000	44,964	56.8%	10,163	55.4%	1,914	45.7%	980	40.9%
2001	47,265	57.6%	10,775	56.0%	2,387	47.7%	1,150	42.3%

* Total students includes domestic students and international students.

Note: Excludes students in the Toronto School of Theology.

**GENDER BALANCE OF UNDERGRADUATE AND GRADUATE ENROLMENTS
BY FIELD OF STUDY**

November 1, 2001

STATISTICS CANADA FIELD OF STUDY	UNDERGRADUATE		GRADUATE	
	Total	% Female	Total	% Female
Biological Sciences	3,198	64%	381	56%
Education & Physical Education	3,853	74%	2,287	76%
Engineering & Applied Sciences	3,985	30%	1,550	26%
Fine & Applied Arts	1,145	66%	283	66%
General Arts and Science	10,044	59%	0	n/a
Health Professions	4,241	52%	2,170	65%
Humanities	4,842	64%	1,305	58%
Math & Physical Sciences	3,063	35%	724	32%
Social Sciences	11,173	62%	2,077	53%
Not Specified	1,738	62%	0	n/a
Total	47,282	58%	10,777	56%

Notes: Education includes the Faculty of Physical Education and Health and the Ontario Institute for Studies in Education.
Excludes students in the Toronto School of Theology and Woodsworth Pre-University program.
Most of the "not specified" group includes first year and special students in Arts and Science.

UNDERGRADUATE INTAKE BY FACULTY

Fall, 2001

	TOTAL HEADCOUNT					PERCENTAGE OF TOTAL HEADCOUNT				
	GTA Area	Other Ontario	Other Canada	Inter-national	Total	GTA	Other Ontario	Other Canada	Inter-national	Total
Arts & Science										
Mississauga	1,499	178	66	104	1,847	81.2%	9.6%	3.6%	5.6%	100%
Scarborough	1,600	77	38	97	1,812	88.3%	4.2%	2.1%	5.4%	100%
St George	4,685	649	352	515	6,201	75.6%	10.5%	5.7%	8.3%	100%
Total Arts & Science	7,784	904	456	716	9,860	78.9%	9.2%	4.6%	7.3%	100%
Applied Science	800	111	81	99	1,091	73.3%	10.2%	7.4%	9.1%	100%
Dentistry	41	17	9	2	69	59.4%	24.6%	13.0%	2.9%	100%
Law	57	30	55	16	158	36.1%	19.0%	34.8%	10.1%	100%
OISE/UT	987	381	13	2	1,383	71.4%	27.5%	0.9%	0.1%	100%
Medicine										
B Sc (Radiation Science)	24	21	13	3	61	39.3%	34.4%	21.3%	4.9%	100%
Community Health Diploma	1	0	0	0	1	100.0%	0.0%	0.0%	0.0%	100.0%
Clinical Chemistry	3	1	0	0	4	75.0%	25.0%	0.0%	0.0%	100.0%
Clinical Epidemiology	4	0	0	0	4	100.0%	0.0%	0.0%	0.0%	100.0%
MD	57	62	16	0	135	42.2%	45.9%	11.9%	0.0%	100%
Post Grad Medical Education	n.a.	n.a.	n.a.	n.a.	n.a.	n.a.	n.a.	n.a.	n.a.	n.a.
Rehabilitation Medicine	n.a.	n.a.	n.a.	n.a.	n.a.	n.a.	n.a.	n.a.	n.a.	n.a.
Total, Medicine	89	84	29	3	205	43.4%	41.0%	14.1%	1.5%	100%
Music	62	18	23	17	120	51.7%	15.0%	19.2%	14.2%	100%
Nursing	22	15	4	0	41	53.7%	36.6%	9.8%	0.0%	100%
Pharmacy	22	39	5	0	66	33.3%	59.1%	7.6%	0.0%	100%
Physical Education and Health	86	21	5	2	114	75.4%	18.4%	4.4%	1.8%	100%
Total Undergraduate	9,950	1,620	680	857	13,107	75.9%	12.4%	5.2%	6.5%	100%

Notes: Excludes Transitional Year Program and Woodsworth diploma & certificate programs.

Undergraduate includes Graduate diplomas in Dentistry, Medicine and Music.

Intake data is not available for Post-Graduate Medical Education

There were no new students in the Rehabilitation Medicine (OT/PT) programs in 2001 due to the start of phase-out of undergraduate programs.

GRADUATE INTAKE BY FACULTY

Fall, 2001

	TOTAL HEADCOUNT					PERCENTAGE OF TOTAL HEADCOUNT				
	GTA Area	Other Ontario	Other Canada	Inter- national	Total	GTA	Other Ontario	Other Canada	Inter- national	Total
Forestry	12	7	1	5	25	48.0%	28.0%	4.0%	20.0%	100%
Information Studies	41	7	3	4	55	74.5%	12.7%	5.5%	7.3%	100%
Management	202	12	20	47	281	71.9%	4.3%	7.1%	16.7%	100%
OISE / UT	179	89	21	26	315	56.8%	28.3%	6.7%	8.3%	100%
School of Graduate Studies										
Div I Humanities	82	45	61	79	267	30.7%	16.9%	22.8%	29.6%	100%
Div II Social Sciences	107	38	50	68	263	40.7%	14.4%	19.0%	25.9%	100%
Div III Physical Sciences	295	46	69	161	571	51.7%	8.1%	12.1%	28.2%	100%
Div IV Life Sciences	298	117	62	66	543	54.9%	21.5%	11.4%	12.2%	100%
Social Work	87	21	12	2	122	71.3%	17.2%	9.8%	1.6%	100%
Total Graduate	1,303	382	299	458	2,442	53.4%	15.6%	12.2%	18.8%	100%

TOTAL INTAKE

Fall, 2001

	TOTAL HEADCOUNT					PERCENTAGE OF TOTAL HEADCOUNT				
	GTA Area	Other Ontario	Other Canada	Inter- national	Total	GTA	Other Ontario	Other Canada	Inter- national	Total
Total Undergraduate	9,950	1,620	680	857	13,107	75.9%	12.4%	5.2%	6.5%	100%
Total Graduate	1,303	382	299	458	2,442	53.4%	15.6%	12.2%	18.8%	100%
Grand Total	11,253	2,002	979	1,315	15,549	72.4%	12.9%	6.3%	8.5%	100%

UNIVERSITY OF TORONTO DEGREES AWARDED BY GENDER

Calendar Year 2001

STATISTICS CANADA FIELD OF STUDY*	UNDERGRADUATE		MASTERS		DOCTORAL		TOTAL	
	Total	% Female	Total	% Female	Total	% Female	Total	% Female
Humanities	1,423	65%	354	65%	99	62%	1,876	65%
Social Sciences	3,937	66%	1,152	62%	204	62%	5,293	65%
Physical Sciences	1,424	32%	465	23%	108	17%	1,997	29%
Life Sciences	1,615	62%	407	72%	123	49%	2,145	63%
Total	8,399	59%	2,378	57%	534	50%	11,311	58%

- * The category 'Humanities' is the sum of Humanities and Fine & Applied Arts
 The category 'Social Sciences' is the sum of Social Sciences and Education & Physical Education
 The category 'Physical Sciences' is the sum of Math & Physical Sciences and Engineering & Applied Sciences
 The category 'Life Sciences' is the sum of Health Professions and Agricultural & Biological Sciences

Note: Excludes Toronto School of Theology, Certificate and Diploma students.

TUITION FEE SCHEDULE FOR DOMESTIC AND INTERNATIONAL STUDENTS

2002-2003

	DOMESTIC STUDENTS 2002 Entering Cohort 2002-2003	INTERNATIONAL STUDENTS 2002 Entering Cohort 2002-2003
APPLIED SCIENCE & ENGINEERING		
Bachelors	\$6,250	\$13,887
M.Eng.	\$6,416	\$12,836
ARCHITECTURE, LANDSCAPE, AND DESIGN		
M. Arch.	\$6,125	\$12,545
M.L.A.	\$6,125	\$12,545
M.U.D.	\$6,125	\$12,545
ARTS & SCIENCE incl. SCARBOROUGH		
B.A.	\$4,107	\$10,661
B.A. - Computer Science and Communication Culture & Information Technology	\$4,107	\$10,661
B.A. - Commerce/Bus Admin	\$4,107	\$10,661
B.A. - Mgt UTM	\$4,107	\$10,661
M.Sc.Pl.	\$6,125	\$9,925
M.U.D.S.	\$6,125	\$9,925
Masters of Spatial Analysis - Joint Program with Ryerson	\$6,125	\$9,925
M.Sc. Biotechnology	\$8,925	\$15,925
DENTISTRY		
D.D.S.	\$16,500	\$29,250
B.Sc. Dent	\$5,111	\$12,462
Graduate Specializations except D.P.H.	\$15,435	\$28,185
M.Sc. Specialty in Dental Public Health	\$6,416	\$12,836
Dental Residents	\$0	(1)

(1) International Students may be admitted to residency Programs as a result of negotiated agreements with Foreign Governments

TUITION FEE SCHEDULE FOR DOMESTIC AND INTERNATIONAL STUDENTS

2002-2003 (continued)

	DOMESTIC STUDENTS 2002 Entering Cohort 2002-2003	INTERNATIONAL STUDENTS 2002 Entering Cohort 2002-2003
FORESTRY		
M.F.C.	\$5,844	\$12,264
INFORMATION STUDIES		
M.I.St.	\$5,844	\$12,264
LAW		
J.D.	\$14,000	\$21,192
M.S.L.	\$5,183	\$8,983
MANAGEMENT		
M.B.A.	\$23,500	\$26,000
MEDICINE		
Doctor of Medicine	\$15,435	\$28,185
Postgraduate Medical Trainees	\$0	(1)
Health Science Diplomas	\$6,416	\$12,836
Diploma in Clinical Chemistry	\$6,416	\$12,836
Radiation Sciences	\$4,643	\$11,994
M.Sc. Occupational Therapy and Physical Therapy	\$6,416	\$12,836
Master of Health Science	\$6,416	\$12,836
M.Sc.BMC.	\$6,416	\$12,836
M.Sc.BMC. - Combined program with Sheridan College	\$6,416	\$12,836

(1) International Students may be admitted to residency Programs as a result of negotiated agreements with Foreign Governments.

TUITION FEE SCHEDULE FOR DOMESTIC AND INTERNATIONAL STUDENTS

2002-2003 (continued)

	DOMESTIC STUDENTS 2002 Entering Cohort 2002-2003	INTERNATIONAL STUDENTS 2002 Entering Cohort 2002-2003
MUSIC		
Undergraduate	\$4,107	\$11,948
Operatic Performance Diploma	\$5,665	\$9,465
Mus.M. (Performance)	\$5,665	\$9,465
Mus.M. (Other)	\$5,183	\$8,983
Advanced Certificate in Performance	\$5,665	\$9,465
NURSING		
Second Entry - Bachelors	\$5,510	\$11,930
M.N.	\$5,844	\$12,264
OISE/UT		
B.Ed.	\$4,643	\$12,485
Technical & Vocational Certificates	\$4,643	\$12,485
Joint Master of Teaching in Human Devt and Curriculum	\$6,416	\$12,836
M.A. in Child Study	\$6,416	\$12,836
M.A.(T.)	\$6,416	\$12,836
M.Ed.	\$6,416	\$12,836
Ed.D.	\$6,061	\$12,735
PHARMACY		
Bachelors	\$9,371	\$17,213
PHYSICAL EDUCATION AND HEALTH		
B.P.E.H	\$4,107	\$11,948

TUITION FEE SCHEDULE FOR DOMESTIC AND INTERNATIONAL STUDENTS

2002-2003 (continued)

	DOMESTIC STUDENTS 2002 Entering Cohort 2002-2003	INTERNATIONAL STUDENTS 2002 Entering Cohort 2002-2003
S.G.S. (annual fee)		
Doctoral Stream	\$5,183	\$8,983
S.G.S. CENTERS AND INSTITUTES		
M.I.R.	\$6,416	\$12,836
M.M.St.	\$6,416	\$12,836
SOCIAL WORK		
M.S.W.	\$5,844	\$12,264
TRANSITIONAL YEAR PROGRAM		
Transitional Year Program	\$3,488	(2)
WOODSWORTH		
Woodsworth Certificates	\$4,107	\$10,661
Diploma in Gerontology	\$6,416	\$12,836

(2) Program is limited to Domestic Students only.

TUITION FEE SCHEDULE FOR SELF-FUNDED PROGRAMS

2002-2003

	2002 ENTERING COHORT 2002-03
Masters of Engineering in Telecommunications	\$25,000.00
Masters of Engineering & Manufacturing Course Fee	\$2,500.00
Certificate Program in Professional and Aviation Management	\$18,000.00
ConGESE (Consortium for Graduate Education in Software Engineering)	\$2,250.00
Summer Program in Medieval Latin	
Domestic	\$650.00
International	\$750.00
Masters of Mathematical Finance	\$30,000.00
Faculty of Dentistry Qualifying Program	\$33,075.00
Executive Masters of Business Administration	\$68,000.00*
Executive Masters of Business Administration (Global Option)	\$33,000.00
Masters of Management and Professional Accounting	
Domestic	\$17,100.00
International	\$19,500.00
Master of Financial Economics	\$17,000.00
MEDICINE	
Sponsored Medical Trainees	\$24,297.00
Visiting MD Student Course Fee	
1-2 weeks	\$216.00
3-4 weeks	\$288.00
5-6 weeks	\$360
7-8 weeks	\$432
Nurse Practitioner Certificate Course Fee	\$821
Post-Masters Acute Care Nurse Practitioner Program	\$12,500
OISE/UT- Additional Qualifications Course	\$825
Pharm. D.	\$25,350
Diploma in Social Work Research	\$3,010
WOODSWORTH COLLEGE	
Certificate in Case Management Course Fee	\$577

* The 2002-03 Entering Cohort Fee for the EMBA is a full program fee.

TUITION FEE SCHEDULE FOR OISE/UT SCHOOLS

2002-2003

	2002-03
Laboratory School - Half Day Program	\$4,300.00
Laboratory School - Full Day Program	6,700.00
U T S	9,886.00

Part E

Graduates

Graduates by Region	48
Graduate Donations to the University by Region	49
Overall Fundraising Achievement	50
Overall Fundraising Achievement: Source of Donations	51
Graduates by College or Faculty Affiliation	52

GRADUATES BY REGION

2002

	NUMBER OF GRADUATES	PERCENTAGE OF TOTAL
Canada		
Ontario		
Metro Toronto	171,929	44.4%
Central Ontario	97,721	25.3%
Southwestern Ontario	21,110	5.5%
Eastern Ontario	19,956	5.2%
Northern Ontario	7,682	2.0%
Rest of Canada		
British Columbia	10,023	2.6%
Alberta	5,728	1.5%
Unknown within Canada	4,754	1.2%
Quebec	4,683	1.2%
Nova Scotia	2,155	0.6%
Manitoba	1,849	0.5%
Saskatchewan	1,355	0.4%
New Brunswick	983	0.3%
Newfoundland	939	0.2%
Northwest Territories	311	0.1%
Prince Edward Island	285	0.1%
Yukon Territory	100	-
Nunavut	20	-
Canada Total	351,583	90.9%
United States Total	20,214	5.2%
International Total	15,109	3.9%
Unknown	81	-
Grand Total	386,987	100.0%

Notes: Regional Breakdown is based on data as at November 30, 2002

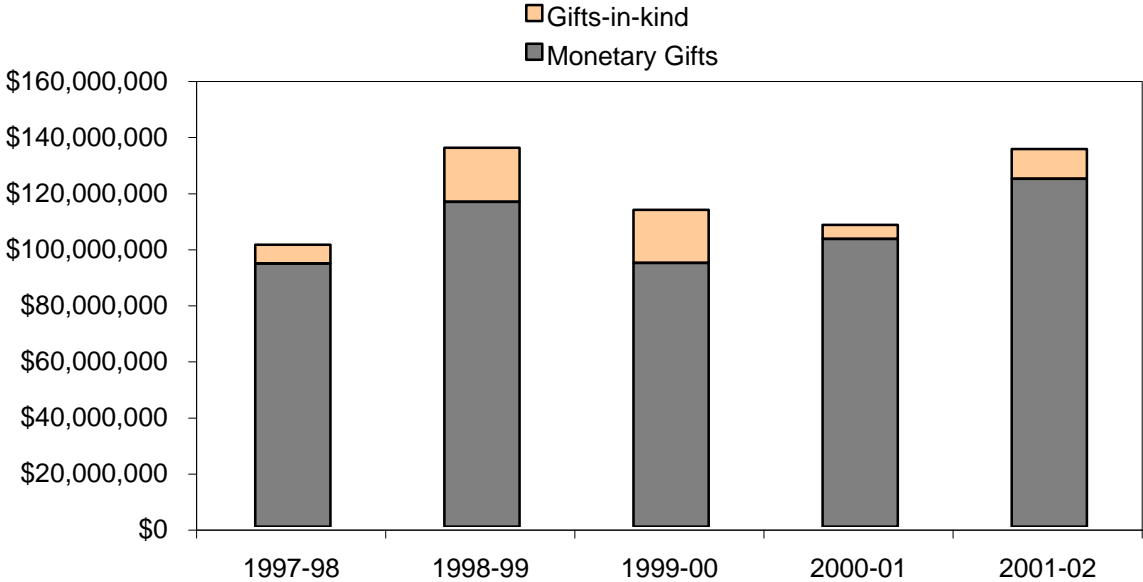
GRADUATE DONATIONS TO THE UNIVERSITY BY REGION
2001-2002

	TOTAL GIFTS FROM GRADUATES	
	Value	Percentage of Total
Canada		
Ontario		
Metro Toronto	\$25,872,670	75.7%
Central Ontario	\$2,411,597	7.1%
Southwestern Ontario	\$742,102	2.2%
Eastern Ontario	\$716,381	2.1%
Northern Ontario	\$169,393	0.5%
Total Ontario	\$29,912,144	87.5%
Rest of Canada		
Manitoba	\$510,585	1.5%
British Columbia	\$334,738	1.0%
Quebec	\$312,637	0.9%
Alberta	\$118,038	0.3%
Nova Scotia	\$16,930	-
Saskatchewan	\$11,365	-
Newfoundland	\$9,495	-
Prince Edward Island	\$8,220	-
New Brunswick	\$8,040	-
Northwest Territories	\$1,630	-
Yukon Territory	\$600	-
Nunavut	\$0	-
Total Rest of Canada	\$1,332,278	3.9%
Canada Total	\$31,244,422	91.4%
United States Total	\$2,623,657	7.7%
International Total	\$329,089	1.0%
Grand Total	\$34,197,169	100.0%

Notes: Donations are based on payments only received between
May 1, 2001 and April 30, 2002
Does not include payments processed by the University of
Trinity College.

OVERALL FUNDRAISING ACHIEVEMENT

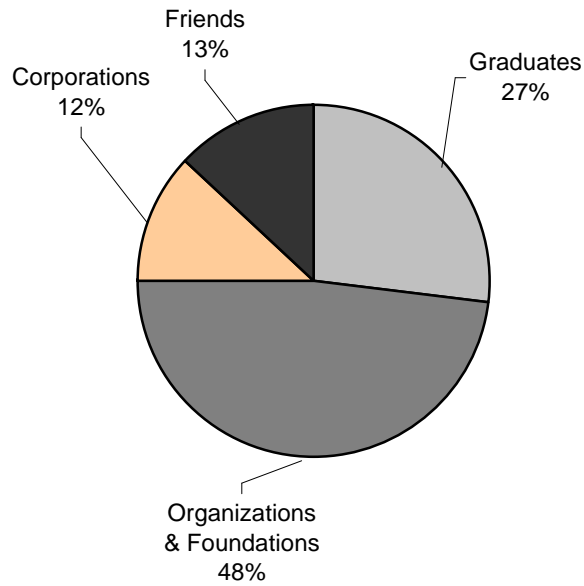
1997-1998 to 2001-2002



Notes: Monetary gifts are based on actual payments received.
The above donations include those received by the University of Toronto and those receipted by the University of St. Michael's College, University of Trinity College and Victoria University.

OVERALL FUNDRAISING ACHIEVEMENT
SOURCE OF DONATIONS
May 1, 2001 - April 30, 2002

Total Value = \$134,657,638



Note: Figures are based on payments received by the University of Toronto, the University of St. Michael's College, University of Trinity College and Victoria University.

GRADUATES BY COLLEGE OR FACULTY AFFILIATION

2002

	NUMBER OF GRADUATES	PERCENTAGE OF TOTAL
Arts & Science Programs		
<i>Constituent Colleges:</i>		
University College	43,013	8.4%
New College	15,163	2.9%
Innis College	6,229	1.2%
Woodsworth College	15,643	3.0%
Total Constituent Colleges	80,048	15.5%
<i>Federated Colleges:</i>		
	35,922	7.0%
St. Michael's College	27,068	5.3%
Victoria College	36,185	7.0%
Trinity College	16,623	3.2%
Total Federated Colleges	79,876	15.5%
University of Toronto at Mississauga	26,380	5.1%
University of Toronto at Scarborough	24,597	4.8%
Total Arts & Science Programs	210,901	40.9%
Applied Science & Engineering	42,024	8.2%
Architecture, Landscape & Design	3,208	0.6%
Dentistry	10,342	2.0%
Forestry	2,709	0.5%
Graduate Studies/Graduate Institutes & Centres	86,452	16.8%
Information Studies	5,512	1.1%
Joseph L. Rotman School of Management	8,316	1.6%
Law	6,898	1.3%
Medicine, Doctor of	13,935	2.7%
Other Medicine	12,939	2.5%
Music	4,496	0.9%
Nursing	9,510	1.8%
OISE/UT:		
Undergraduate	42,000	8.2%
Graduate	20,685	4.0%
Institute of Child Study	2,038	0.4%
Pharmacy	9,943	1.9%
Physical & Occupational Therapy	6,264	1.2%
Physical Education & Health	4,450	0.9%
Social Work	6,960	1.4%
Woodsworth Certificate & Diploma	5,523	1.1%
Total	515,105	100.0%

A recent addition of historical data may cause larger than expected increases from previous year counts.

All honorary degrees are excluded.

Alumni with multiple degrees are counted each time they occur in a constituency.

A single degree may be counted in more than one constituency.

Does not include Toronto School of Theology.

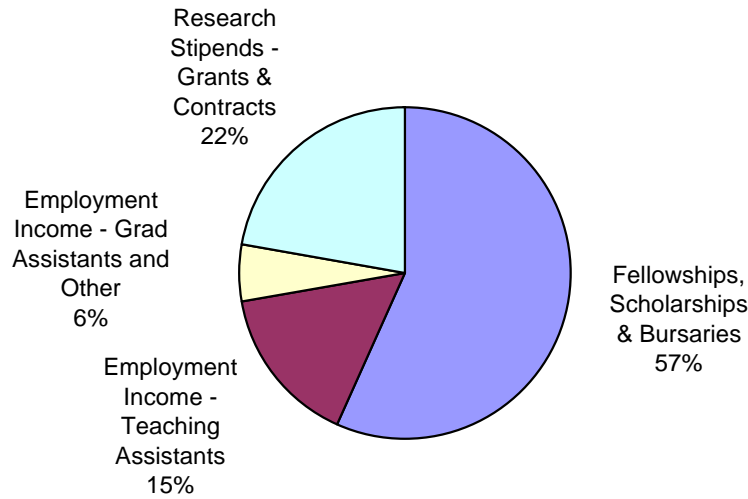
Part F

Student Awards

Graduate Student Support by Source	54
Graduate Student Support by S.G.S. Division	54
Undergraduate Student Support :	
Admission Scholarships, In-Course Scholarships and Bursaries by Faculty and College	55
OSAP and University of Toronto Advanced Planning for Students program (UTAPS) by Faculty and College	56

GRADUATE STUDENT SUPPORT BY SOURCE
2001-2002

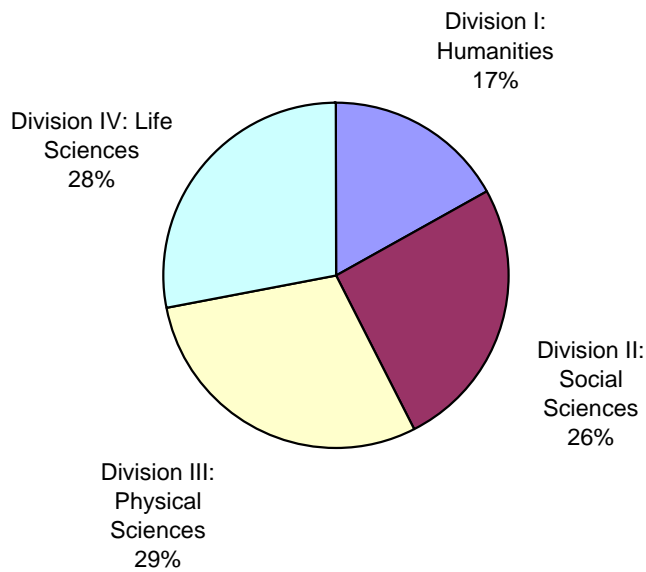
Total \$109,482,004*



*Does not include updated information on research stipends from affiliated teaching hospitals.

GRADUATE STUDENT SUPPORT BY SCHOOL OF GRADUATE STUDIES DIVISION
2001-2002

Total \$109,482,004*



*Does not include updated information on research stipends from affiliated teaching hospitals.

**UNDERGRADUATE STUDENT SUPPORT:
ADMISSION SCHOLARSHIPS, IN-COURSE SCHOLARSHIPS AND BURSARIES
2001-2002**

FACULTY / COLLEGE	ADMISSION SCHOLARSHIPS		IN-COURSE SCHOLARSHIPS		BURSARIES	
	Number	Value	Number	Value	Number	Value
Applied Science and Engineering	321	1,024,784	198	471,562	1,470	3,085,514
Architecture, Landscape, and Design	0	0	10	8,335	36	71,968
Dentistry	3	3,309	53	62,936	247	784,546
Innis College	45	140,000	128	166,344	301	396,051
Law	16	53,786	133	61,906	642	1,396,188
Medicine	2	3,251	302	176,941	720	1,722,694
Mississauga, University of Toronto at	171	278,022	150	136,613	692	831,375
Music	24	40,249	118	184,230	185	368,392
New College	54	129,166	109	116,601	675	1,157,453
Nursing	5	8,449	20	23,951	105	233,234
Occupational Therapy	0	0	3	800	33	95,943
OISE/UT Undergraduate	11	33,411	17	22,508	363	1,212,721
Pharmacy	21	23,454	79	48,596	569	1,028,044
Physical Education and Health	8	16,500	25	15,833	95	99,243
Physical Therapy	0	0	5	1,060	65	149,825
Radiation Sciences	0	0	2	2,000	89	236,177
Scarborough, University of Toronto at	213	277,121	240	242,895	1,129	1,816,311
St. Michael's College	48	114,132	117	150,181	518	738,026
Transitional Year Program	0	0	12	4,124	137	306,761
Trinity College	142	311,900	270	282,311	207	433,792
University College	211	381,892	840	751,947	760	1,534,277
Victoria College	160	467,939	335	455,575	607	981,953
Woodsworth College	43	29,500	113	76,308	1,084	1,880,431
Total	1,498	\$3,336,865	3,279	\$3,463,556	10,729	\$20,560,917

OSAP AND UTAPS BY FACULTY AND COLLEGE

2001-2002

FACULTY / COLLEGE	OSAP APPLICANTS AS A PERCENTAGE OF FULL-TIME ENROLMENT		OSAP		UTAPS	
			Number	Value	Number	Value
Applied Science and Engineering	39%		1,143	6,759,442	1,008	1,913,834
Architecture, Landscape, and Design	35%		17	145,308	12	33,400
Dentistry	66%		175	1,670,000	171	681,922
Innis College	34%		326	2,307,648	92	162,750
Law	39%		180	1,294,476	0	0
Management	30%		91	631,676	0	0
Medicine	60%		410	3,908,923	360	1,101,058
Mississauga, University of Toronto at	42%		1,550	9,578,035	245	410,100
Music	29%		100	720,353	42	118,668
New College	46%		1,021	6,831,109	206	426,000
Nursing	44%		42	422,185	15	52,350
Occupational Therapy	97%		37	405,742	19	65,150
OISE/UT Graduate	22%		220	2,369,689	130	524,855
OISE/UT Undergraduate	40%		419	4,028,595	180	537,350
Pharmacy	59%		300	2,042,466	261	584,685

OSAP AND UTAPS BY FACULTY AND COLLEGE (continued)
2001-2002

FACULTY / COLLEGE	OSAP APPLICANTS AS A PERCENTAGE OF FULL-TIME ENROLMENT		OSAP		UTAPS	
			Number	Value	Number	Value
Physical Education and Health	33%		105	651,439	2	3,850
Physical Therapy	50%		59	548,944	36	93,550
Radiation Sciences	57%		159	1,468,513	75	199,250
Scarborough, University of Toronto at	53%		1,984	12,173,146	382	677,200
School of Graduate Studies	14%		716	6,433,756	534	1,444,127
St. Michael's College	34%		825	4,942,371	128	225,210
Transitional Year Program	87%		47	526,684	31	93,600
Trinity College	28%		270	1,780,997	63	108,650
University College	37%		928	6,135,713	187	362,250
Victoria College	36%		905	6,092,125	202	323,400
Woodsworth College	70%		1,089	8,713,419	229	563,210
Total	38%		13,118	\$92,582,754	4,610	\$10,706,419

Notes: UTAPS for School of Graduate Studies are also included in the totals shown in Graduate Student Support by Graduate Studies Division
 UTAPS at Law and Management is distributed as part of their grants programs and are not included above.
 UTAPS data in this table refer to grants awarded to OSAP recipients only.

Part G

Faculty and Administrative Staff

Distribution of Full-Time Appointed Tenured/Tenure Stream Faculty by Major Division and Main Appointment	60
Distribution of Full-Time Tenured/Tenure Stream Faculty by Rank and Gender	61
Age Distribution of Tenured/Tenure Stream Faculty	61
Distribution of Full and Part Time ($\geq 25\%$) Academic Staff and Librarians by Rank and Gender	62
Distribution of Full Time and Part Time Administrative and Union Staff	64
Operating Fund Full-Time Equivalent Staff	65

**DISTRIBUTION OF FULL-TIME APPOINTED TENURED/TENURE
STREAM FACULTY BY MAJOR DIVISION AND MAIN APPOINTMENT**

All Sources of Funding
2001-2002

DIVISION			%	TOTAL
	MALE	FEMALE	FEMALE	
Applied Science and Engineering	171	13	7.1%	184
Architecture, Landscape, and Design	10	1	9.1%	11
Arts and Science*	505	146	22.4%	651
Dentistry	36	6	14.3%	42
Education (OISE/UT)	72	81	52.9%	153
Forestry	10	2	16.7%	12
Information Studies	5	9	64.3%	14
Law	29	15	34.1%	44
Management	50	10	16.7%	60
Medicine	139	59	29.8%	198
Mississauga, University of Toronto at	108	36	25.0%	144
Music	19	8	29.6%	27
Nursing	0	20	100.0%	20
Pharmacy	13	6	31.6%	19
Physical Education and Health	9	5	35.7%	14
Scarborough, University of Toronto at	104	36	25.7%	140
School of Graduate Studies	14	7	33.3%	21
Social Work	7	10	58.8%	17
Other**	1	3	75.0%	4
Total	1,302	473	26.6%	1,775

* Includes University College, Innis College, New College, Woodsworth College, Trinity, Victoria, St. Michael's College.

** Includes Office of the President and Vice-President and Provost.

**DISTRIBUTION OF FULL-TIME TENURED/TENURE STREAM FACULTY
BY RANK AND GENDER**

All Sources of Funding
2001-2002

RANK	MALE	FEMALE	% FEMALE	TOTAL
Professor	752	138	15.5%	890
Associate Professor	336	204	37.8%	540
Assistant Professor	201	126	38.5%	327
Assistant Professor (conditional)	13	5	27.8%	18
Total	1,302	473	26.6%	1,775

Note: Includes Faculties of Medicine and Dentistry.

AGE DISTRIBUTION OF TENURED/TENURE STREAM FACULTY

2001-2002

RANK	AVERAGE AGE
Professor	54.7
Associate Professor	48.3
Assistant Professor	36.7
Assistant Professor (conditional)	36.7

Note: Total number of Faculty = 1,775.

DISTRIBUTION OF FULL AND PART-TIME (>=25%) ACADEMIC STAFF AND LIBRARIANS BY RANK AND GENDER

All Sources of Funding
2001-2002

RANK	FULL-TIME			Total
	Male	Female	%	
Professor	880	161	15.5%	1,041
Associate Professor	471	246	34.3%	717
Assistant Professor	325	210	39.3%	535
Assistant Professor (cond)	28	24	46.2%	52
Lecturer (medical)	5	7	58.3%	12
Instructor	11	27	71.1%	38
Senior Lecturer/Lecturer	62	76	55.1%	138
Senior Tutor/Tutor	34	45	57.0%	79
Sub-Total	1,816	796	30.5%	2,612
Librarian	33	96	74.4%	129
Total	1,849	892	32.5%	2,741

RANK	PART-TIME			Total
	Male	Female	%	
Professor	36	7	16.3%	43
Associate Professor	54	14	20.6%	68
Assistant Professor	44	36	45.0%	80
Assistant Professor (cond)	8	6	42.9%	14
Lecturer (medical)	0	3	100.0%	3
Instructor	3	4	57.1%	7
Senior Lecturer/Lecturer	32	37	53.6%	69
Senior Tutor/Tutor	20	17	45.9%	37
Sub-Total	197	124	38.6%	321
Librarian	3	19	86.4%	22
Total	200	143	41.7%	343

DISTRIBUTION OF FULL AND PART-TIME (>=25%) ACADEMIC STAFF AND LIBRARIANS BY RANK AND GENDER Continued

All Sources of Funding
2001-2002

RANK	TOTAL			Total
	Male	Female	%	
Professor	916	168	15.5%	1,084
Associate Professor	525	260	33.1%	785
Assistant Professor	369	246	40.0%	615
Assistant Professor (cond)	36	30	45.5%	66
Lecturer (medical)	5	10	66.7%	15
Instructor	14	31	68.9%	45
Senior Lecturer/Lecturer	94	113	54.6%	207
Senior Tutor/Tutor	54	62	53.4%	116
Sub-Total	2,013	920	31.4%	2,933
Librarian	36	115	76.2%	151
Total	2,049	1,035	33.6%	3,084

Notes: Includes Faculty of Medicine and Dentistry.

Includes both tenured/tenure stream and non-tenure stream professorial staff.

DISTRIBUTION OF FULL-TIME AND PART-TIME ADMINISTRATIVE AND UNION STAFF

September 2001

EMPLOYEE GROUP	FULL-TIME			PART-TIME			ALL		
	Male	Female	Total	Male	Female	Total	Male	Female	Total
Non-Unionized Employees									
Senior Management Group*	51	68	119	0	3	3	51	71	122
USWA-exempt Admin staff*	207	343	550	3	26	29	210	369	579
Total non-unionized employees	258	411	669	3	29	32	261	440	701
Unionized Employees									
Library	58	136	194	12	15	27	70	151	221
Operating Engineers	67	2	69	0	0	0	67	2	69
Police	28	9	37	0	0	0	28	9	37
Service Workers	283	200	483	11	5	16	294	205	499
Teaching Assistants**	0	0	0	1,573	1,252	2,825	1,573	1,252	2,825
Trades and Services***	61	1	62	0	0	0	61	1	62
USWA Admin staff*	760	1770	2,530	37	236	273	797	2006	2,803
Total unionized employees	1,257	2,118	3,375	1,633	1,508	3,141	2,890	3,626	6,516
Total	1,515	2,529	4,044	1,636	1,537	3,173	3,151	4,066	7,217

* Excludes Non University of Toronto Departments.

** Includes 183 OISE Graduate Assistants

*** Trades and Services includes Machinists, Carpenters, Electrical Workers, Sheet Metal Workers, Plumbers, Pipefitters, and Painters.

OPERATING FUND FULL-TIME EQUIVALENT STAFF

2002-03

DIVISION	ACADEMIC	ADMINISTRATIVE
Applied Science and Engineering	209.31	199.38
Architecture, Landscape, and Design	25.54	20.70
Arts & Science	840.70	420.31
Colleges	21.34	103.95
Dentistry	80.42	141.96
Forestry	15.07	7.00
Graduate Centres and Institutes	22.89	30.74
Information Studies	15.00	18.40
Law	48.10	53.10
Management	74.40	85.20
Medicine	779.78	347.51
Mississauga, University of Toronto at	202.15	77.41
Music	53.64	31.50
Nursing	38.20	21.30
OISE/UT	260.41	195.00
Pharmacy	39.17	23.25
Physical Education and Health	16.19	7.49
Scarborough, University of Toronto at	204.20	47.58
School of Continuing Studies	0.00	42.00
School of Graduate Studies	4.50	41.30
Social Work	18.98	20.60
Transitional Year Program	10.00	2.50
Subtotal	2,979.99	1,938.18
Academic Services	5.00	553.26
Campus and Student Services	12.93	199.81
Central Administration	15.93	700.67
Facilities and Services	0.00	694.50
Other Academic Costs	0.31	1.00
Grand Total	3,014.16	4,087.42

Notes:

Union staff are included in the Administrative group.

Arts and Science includes Innis, New, St. Michael's, University College Programs.

Colleges include Innis, Munk Centre, New, University, Woodsworth

Part H Library

Library Collections	68
Number of Loans	69
Number of Computers in the Library	69
Digital Library E-Resources	69
Number of Electronic Articles Downloaded	70

LIBRARY COLLECTIONS

2001-2002

There are 31 libraries in the University of Toronto Library System.

COLLECTIONS *	CENTRAL LIBRARIES	LOCAL LIBRARIES	SCARBOROUGH/ MISSISSAUGA	FEDERATED/ AFFILIATED	DIGITAL LIBRARY**	TOTAL
Books	6,752,970	982,251	594,570	1,196,044	7,269	9,533,104
Cartographic Materials	238,858	8	40,980	27		279,873
CD-ROM (Bibliog & Text)	2,056	350	158	405		2,969
Computer Data Files	2,253	273	0	6		2,532
Films & Videos	20,191	1,672	369	893		23,125
Graphic Materials	194,128	365,910	61,890	71,132		693,060
Microforms	4,748,678	192,757	31,353	122,169		5,094,957
Music Scores	0	64,127	0	0		64,127
Sound Recording	9,887	172,142	3,899	3,360		189,288
Other Formats	27,232	9,484	1,162	629		38,507
Total	11,996,253	1,788,974	734,381	1,394,665	7,269	15,921,542
Current Serials	24,133	6,546	3,515	3,448	16,000	53,642
Manuscripts (Metres)	10,141	16	0	94		10,251

* Materials on transfer from Central to Local Libraries (previously included in Central Libraries' counts) are shown in the counts for Local Libraries where they are located. Bound volumes of subscriptions are included in the Book counts.

** Electronic resources (Books & journals).

NUMBER OF LOANS

2001-2002

Central Libraries	
Robarts Library	1,890,217
Gerstein Science Information Centre	789,273
OISE/UT Library	237,320
Fisher Library/Archives	19,529
Audio Visual Library	43,338
Branch Libraries	250,170
Sub-Total	3,229,847
Local Libraries	
UTMississauga Library	493,064
UTScarborough Library	184,678
Federated/Affiliated Libraries*	86,764
Total	4,397,611

* Victoria University Library re-opened October 2001 after renovations.

NUMBER OF COMPUTERS IN THE LIBRARY

April 30, 2002

Computers in the Network	1,825
Stand-Alone PC's	36
Terminals	84

DIGITAL LIBRARY E-RESOURCES

June 05, 2002

	LICENSED*	PUBLIC**	TOTAL
Journals Indexes and Abstracts	407	36	443
Journals	13,507	1,848	15,355
Reference Sources	176	67	243
Books	6,991	35	7,026
Newspapers and News Services	187	15	202
Total	21,268	2,001	23,269

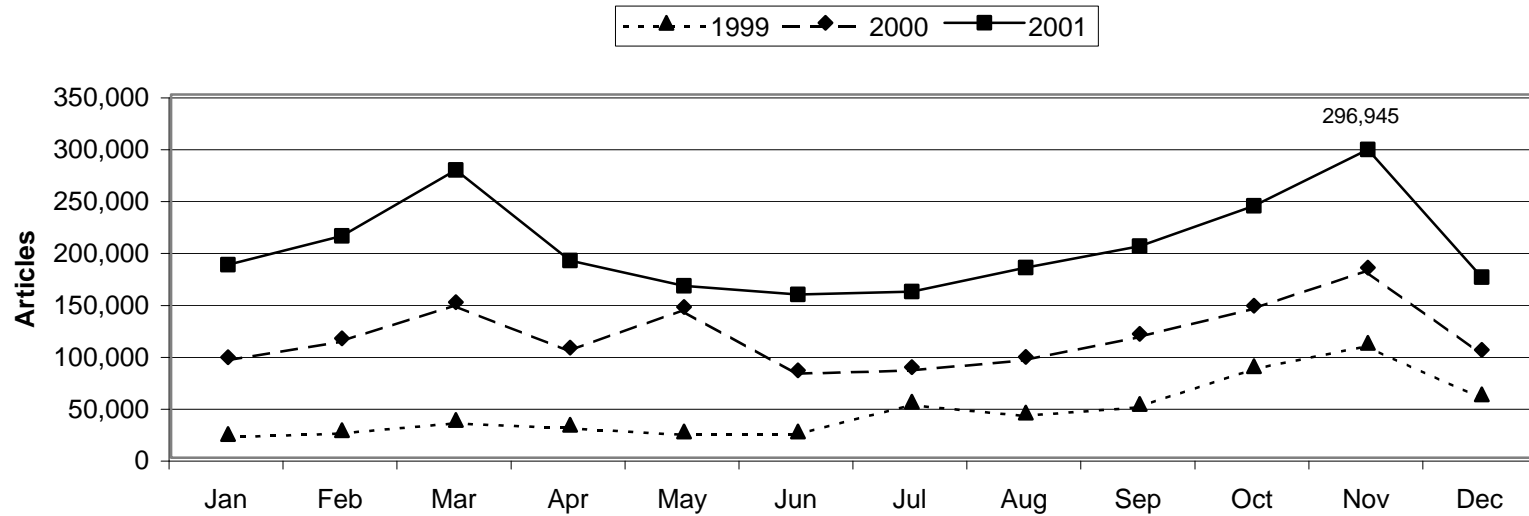
* These items have been licensed for use by the University of Toronto community.

** These items are available on the Internet for use by anyone.

For current figures, see <http://eir.library.utoronto.ca/eir/summary.htm>

NUMBER OF ELECTRONIC ARTICLES DOWNLOADED

1999-2001



Notes:

1. The original data for 1999 included articles downloaded from the Encyclopedia Britannica. This data is no longer available and had been removed from the 1999 data.
2. The data for 1999/2000 now includes journal articles downloaded from the ProQuest system. This data was not previously available.
3. The data for 2000 includes the following publishers, aggregators and systems: Academic Press, Beilstein, Cell Press, Elsevier Science, Harrison's Online, JSTOR, LION, MCB Press, Project MUSE, ProQuest, Publications of the National Academy of Sciences, Science, SIAM, Wiley
4. The data for 2001 now includes data for Highwire Press, Blackwell/Synergy, Nature & Ovid.
5. Figures for 1999 & 2000 adjusted to include data not previously available.

Part I

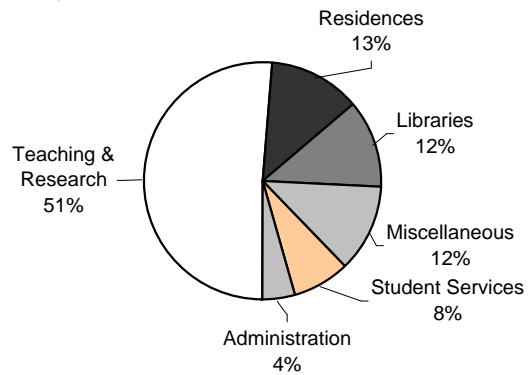
Physical Plant

Usage of Assignable Space	72
Physical Facts :	
a) Area of U of T Properties	74
b) Number of Parking Spaces	74
c) Number of Buildings and Gross Square Metres	75
d) Public Assembly Facilities	76
e) Number of Places in Student Residences	76

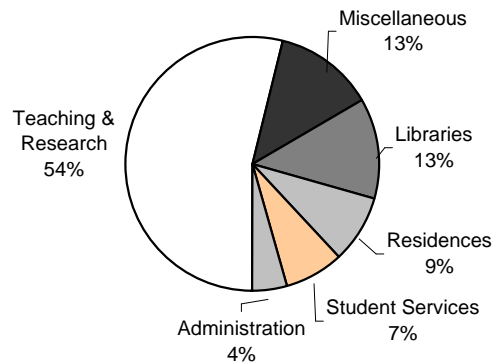
USAGE OF ASSIGNABLE SPACE

2001-2002

University of Toronto (All Campuses)



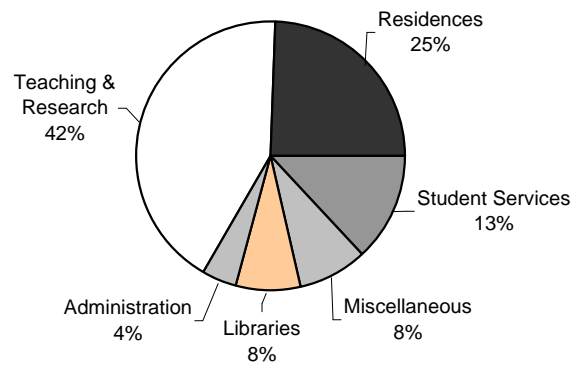
St. George Campus



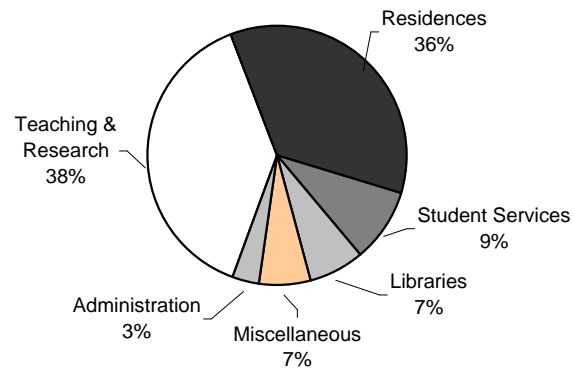
Note: Student Services includes: Athletics, Food Services, Bookstore and Merchandising and Health Services.
Miscellaneous includes: Plant Maintenance, Assembly & Exhibition Facilities, Common Use and Student Activity and Other University Facilities.

USAGE OF ASSIGNABLE SPACE (continued)
2001-2002

Scarborough Campus



Mississauga Campus



Note: Teaching and Research includes: Classrooms, Teaching and Research Laboratories, Academic Services, Health Science Clinic Facilities, Central Services and Media Services.

PHYSICAL FACTS

2001-2002

AREA OF U OF T PROPERTIES

	HECTARES
CAMPUSES	
Downtown Campus	
St. George	50.6
Federated Colleges and Massey	17.3
Total Downtown Campus	67.9
Scarborough	121.5
Mississauga	90.2
Total Campuses	279.6
OFF CAMPUS	
David Dunlap Observatory	76.9
Aerospace	11.9
Joker's Hill	346.0
Total Off Campus	434.8
Grand Total	714.4

Note: Excludes Glendon and Huron/Sussex.
Total Downtown Campus includes St. George,
Federated Colleges and Massey.

NUMBER OF PARKING SPACES

2001-2002

	NUMBER OF SPACES
St. George	2,100
Scarborough	1,791
Mississauga	2,149
Total	6,040

NUMBER OF BUILDINGS AND GROSS SQUARE METRES

2001-2002

BUILDING GROSS SQUARE METRES	NUMBER OF BUILDINGS	NET ASSIGNABLE SQUARE METRES	NET SQUARE METRES	GROSS SQUARE METRES
University				
St. George	111	503,499	803,997	939,776
Leased St. George	9	5,688	7,748	8,799
Scarborough	30	44,387	67,290	78,793
Mississauga	44	62,546	93,112	106,541
Total University	194	616,120	972,147	1,133,909
Federated Colleges and Massey	53	100,377	150,412	189,205
Grand Total	247	716,497	1,122,559	1,323,114

* In 2000-2001 the University backbone serviced 158 U of T buildings. There were 264 Backbone connections.

Note: **Net Assignable Square Metres** is the sum of all areas on all floors of the building assigned to, or available for assignment to, an occupant, including every type of space functionality used by an occupant.
Net Square Metres is the sum of all areas on all floors of the building, both assigned (see definition above) and non-assigned (ie corridors, stairs, mechanical rooms etc.).
Gross Area Square Metres is the sum of all floors areas included within the outside faces of exterior walls, which have floor surfaces.

NUMBER OF PUBLIC ASSEMBLY FACILITIES

2001-2002

	NUMBER OF FACILITIES	SEATING CAPACITY
St. George Lecture Theatres / Hall*	42	9,899
St. George Auditorium	4	3,400
Dining Rooms and Cafeterias*	32	4,325
Varsity Arena	1	4,200

* Including Federated Colleges.

NUMBER OF UNIVERSITY OF TORONTO STUDENTS IN RESIDENCE

2001-2002

	NUMBER OF FIRST-YEAR STUDENTS	NUMBER OF STUDENTS	TOTAL SPACES
University of Toronto Residences			
St. George Including Federated Universities			
Primrose Hotel - Woodsworth College	350	382	391
Charles Street Apartments***	0	756	710
Graduate House	1	433	433
Innis College	195	326	327
New College	387	646	650
St. Michael's College	449	826	844
Trinity College	215	432	435
University College (Incl. Luker House)	348	535	535
Victoria University	396	747	758
Total St. George	2,341	4,892	4,731
University of Toronto at Mississauga			
Graduate & Family Housing**	0	294	294
Undergraduate Housing	404	592	592
Total U of T at Mississauga	404	880	934
University of Toronto at Scarborough	321	536	536
Total University of Toronto residences	3,066	6,308	6,201
Independent Campus Residences			
Campus Co-Op	0	217	306
Knox College	1	98	104
Massey College	0	60	60
Neil-Wycik Co-Operative*	0	45	780
St. Vladimir Institute	12	37	47
Tartu College	135	403	453
Wycliffe College	0	65	70
Total Independent Residences	148	777	1,674
Grand Total	3,214	7,085	7,875

* Premises house mainly Ryerson students.

** Premises house students and their family. Some families may include 2 students.

Notes: As of the beginning of the academic year.

Includes TST students.

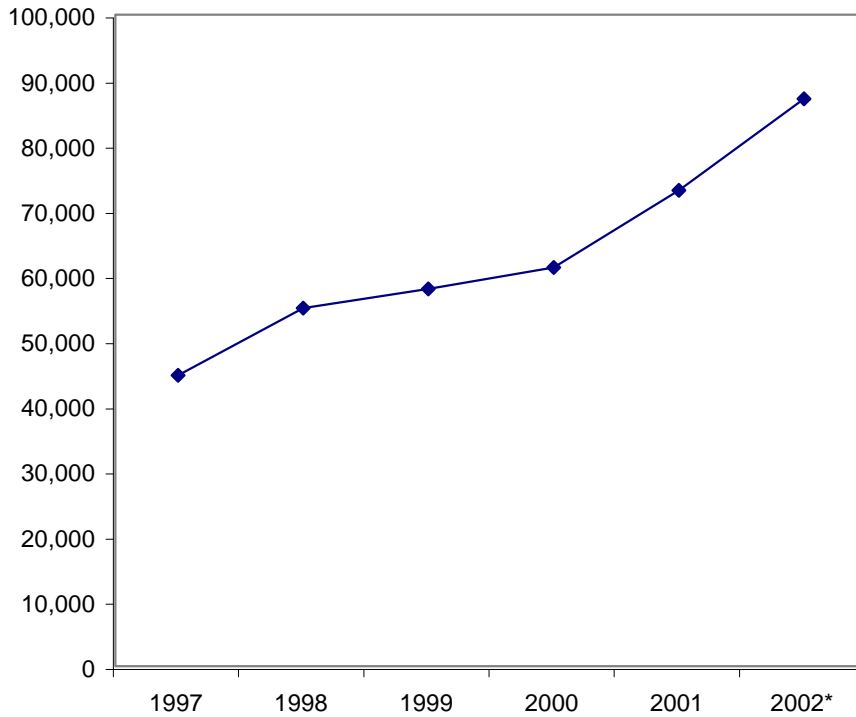
Part J

Computing and Communications

Number of UTORmail accounts at Year End	78
Messages Delivered by UTORmail Post Office	78
Number of Web Transactions	79
Institutional Internet Dial-in Service Dial-in Modem	80
U of T/Bell Sympatico High Speed Edition (HSE)	
Campus Wireless Network	80
Usage of Electronic Student Services	81

NUMBER OF UTORmail ACCOUNTS AT YEAR END

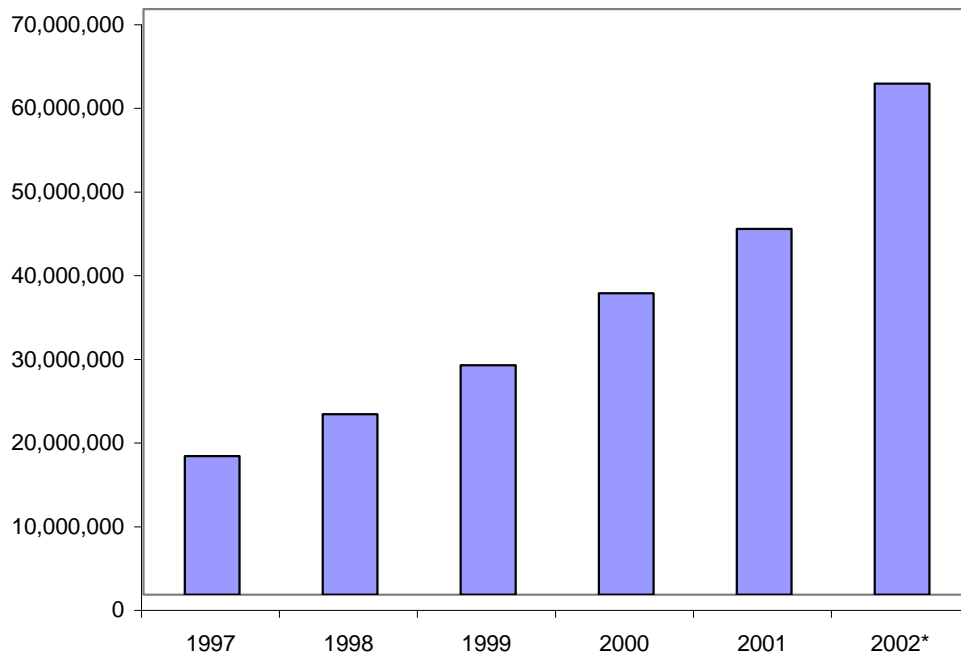
1997-2002



*Note: 2002 figures represent the number of UTORmail accounts up to December 1, 2002.

NUMBER OF MESSAGES DELIVERED BY UTORmail POST OFFICE

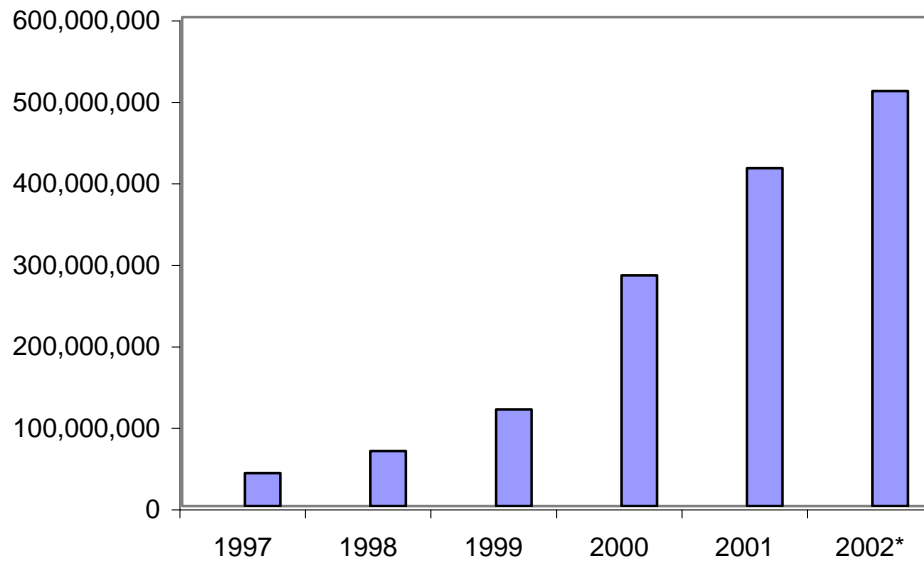
1997-2002



*Note: 2002 figures represent the total messages delivered up to Nov 30, 2002.

NUMBER OF WEB TRANSACTIONS

For the institutional server www.utoronto.ca
1997-2002



*Note: 2002 figures represent the total number of web transactions up to Nov 30, 2002.

INSTITUTIONAL INTERNET DIAL-IN SERVICES

1997-2002

Dial-in modem Up to 56,000 bits per second

Date	Phone Lines	Active Users	Calls per Week
November 1997	402	13,500	105,000
November 1998	512	14,500	116,000
November 1999	632	15,300	134,000
November 2000	663	12,500	113,000
November 2001	597	9,900	92,000
November 2002	413	7,300	68,000

Note: As of first week of November.

U of T/Bell Sympatico High Speed Edition (HSE)* Up to 960,000 bits per second

Date	Active Users	Using UofT Network Address
November 1999	0	0
November 2000	1,159	237
November 2001	1,744	419
November 2002	1,387**	624

*Service first became available in November, 1999.

**Due to a change in promotion this past year, some UofT users may be subscribing through a different offering, not included in this number.

Note: 2002 figures as of first week of November.

CAMPUS WIRELESS NETWORK*

2001-2002

Date	Buildings	Access Points	Sessions per Week
November 2000	0	0	0
November 2001	8	56	500
November 2002	15	118	4,500

*Service first became available in September 2001.

Note: 2002 figures as of first week of November.

USAGE OF ELECTRONIC STUDENT SERVICES

September 1, 2001-August 31, 2002

ACTIVITY	ROSI STUDENT WEB SERVICES rosi.utoronto.ca
Accessing the System	
Access suspended	15,434
Change PIN	42,945
Login successfully	3,216,865
Unsuccessful attempt to change PIN	3,054
Unsuccessful attempt to login	127,860
Maintaining Personal Information	
Add new address	5,282
Add new contact information	3,904
Add new telephone number	3,358
Change address	42,085
Change contact information	2,128
Change e-mail address	27,326
Change telephone number	4,868
Choosing/Changing Academic Options	
Accept Subject POST	5,647
Add new Subject POST	38,427
Add academic activity	442,976
Cancel invited registration	168
Change Subject POST	5,297
Confirm graduation request	6,271
Delete Subject POST	20,517
Cancel registration/Deregister	4,195
Drop academic activity	184,095
List courses	1,505,032
Modify academic activity	174,840

USAGE OF ELECTRONIC STUDENT SERVICES (Continued)*September 1, 2001-August 31, 2002*

	ROSI
	STUDENT WEB
	SERVICES
ACTIVITY	rosi.utoronto.ca
Requesting/Paying for Transcripts	
Request transcript, add charges to student account	8,513
Request transcript, pay by credit card	18,342
Request transcript pending payment	25,070
Create electronic transcript invoice	15,026
Pay electronic transcript invoice	15,873
Unsuccessful electronic payment	1,958
Participating in Campus Life	
Submit an electronic vote	12,919

**Prepared by
The Office of the Vice-Provost, Planning and Budget
University of Toronto**

**Printed in Canada
by University of Toronto Press
2003**