

**UNIVERSITY
OF TORONTO**



2003

**Facts &
Figures**

Facts and Figures is prepared annually by the Office of the Vice-Provost, Planning and Budget. **Facts and Figures** provides answers to some of the most frequently asked questions about the University. It is designed and organized to serve as a useful and reliable source of reference information from year to year.

The reader of **Facts and Figures** should take care when attempting to use the enclosed information comparatively. While some definitions are common to other universities, many others are not. Our Office maintains some comparative databases and has access to some others. Please contact us for assistance in using **Facts and Figures** comparatively.

Each year we try to improve **Facts and Figures** to make it as useful as possible. We are always grateful for suggestions for improvement.

Facts and Figures can also be accessed on the World Wide Web at www.library.utoronto.ca/facts/

Other Official Publications of the University:

- **Performance Indicators for Governance Report, September 2003**
(http://www.provost.utoronto.ca/userfiles/HTML/nts_6_1847_1.html)

- **University of Toronto National Report, 2002**
(<http://www.nationalreport.utoronto.ca/>)

- **University of Toronto Condensed Financial Report, April 30, 2003**
(http://www.finance.utoronto.ca/userfiles/page_attachments/Library/4/1944748_complete2003.pdf)

Corinne Pask-Aubé is the manager of **Facts and Figures** for 2003. She deserves our gratitude for her efforts. She can be reached at (416) 978-7367 or through e-mail at corinne.pask@utoronto.ca.

Safwat Zaky
Vice-Provost, Planning and Budget
Room 240, Simcoe Hall
27 King's College Circle
Toronto, Ontario
M5S 1A1
www.utoronto.ca/planning

CONTENTS

Part A	General	3
	1. Organization of Senior Administration	
	2. Major Academic Divisions	
	3. Degrees, Diplomas and Certificates Offered	
Part B	Finances	15
	1. Statement of Operations	
	2. Changes in Surplus/Deficit	
	3. Operating Fund Expense Summary	
	4. Operating Fund: Academic Expense Summary	
	5. Restricted Funds	
Part C	Research	25
	1. Research Population	
	2. Revenue from Externally Sponsored Research	
	3. Academic Linkages with International Institutions	
	4. Technology Transfer Activities:	
	a) Invention Disclosures	
	b) Spin-off Companies	
	c) Industrial Contracts & Grants	
	d) Government Funding Leveraged by Industrial Collaboration	
Part D	Students	31
	1. Enrolment by Faculty/College	
	2. Enrolment: Age and Gender Balance	
	3. International Student Enrolment by Geographic Origin	
	4. International Students - Geographic Origin: 5 Year Trend	
	5. Ten Year Enrolment Trends, All Students	
	6. Gender Balance of Graduate and Undergraduate Enrolments by Field of Study	
	7. Undergraduate Intake by Faculty	
	8. Graduate Intake by Faculty	
	9. Total Intake	
	10. Degrees Awarded by Gender	
	11. Tuition Fees:	
	a) Domestic and International Students	
	b) Self-Funded Programs	
	c) OISE/UT Schools	
Part E	Graduates	51
	1. Graduates by Region	
	2. Number of Degrees Awarded by College or Faculty Affiliation	
	3. Overall Fundraising Achievement	
	4. Overall Fundraising Achievement: Source of Donations	

CONTENTS (continued)

Part F	Student Awards	57
	1. Graduate Student Support by Source	
	2. Graduate Student Support by S.G.S. Division	
	Undergraduate Student Support : Admission Scholarships,	
	3. In-Course Scholarships and Bursaries by Faculty and College	
	4. OSAP and University of Toronto Advanced Planning for Students program (UTAPS) by Faculty and College	
Part G	Faculty and Administrative Staff	63
	1. Distribution of Full-Time Appointed Tenured/Tenure Stream Faculty by Major Division and Main Appointment	
	2. Distribution of Full-Time Tenured/Tenure Stream Faculty by Rank and Gender	
	3. Age Distribution of Tenured/Tenure Stream Faculty	
	4. Distribution of Full and Part Time ($\geq 25\%$) Academic Staff and Librarians by Rank and Gender	
	5. Distribution of Full and Part-Time Administrative and Union Staff	
	6. Operating Fund Full-Time Equivalent Staff	
Part H	Library	71
	1. Library Collections	
	2. Number of Loans	
	3. Number of Computers in the Library	
	4. Digital Library E-Resources	
	5. Number of Electronic Articles Downloaded	
Part I	Physical Plant	75
	1. Usage of Assignable Space	
	2. Physical Facts :	
	a) Area of U of T Properties	
	b) Number of Parking Spaces	
	c) Number of Buildings and Gross Square Metres	
	d) Public Assembly Facilities	
	e) Number of Places in Student Residences	
Part J	Computing and Communications	81
	1. Number of UTOReMail Accounts at Year End	
	2. Messages Delivered by UTOReMail Post Office	
	3. Number of Web Transactions	
	4. Institutional Internet Dial-in Service	
	a) Dial-in Modem	
	b) U of T/Bell Sympatico High Speed Edition (HSE)	
	5. Campus Wireless Network	
	6. Usage of Electronic Student Services	

Part A

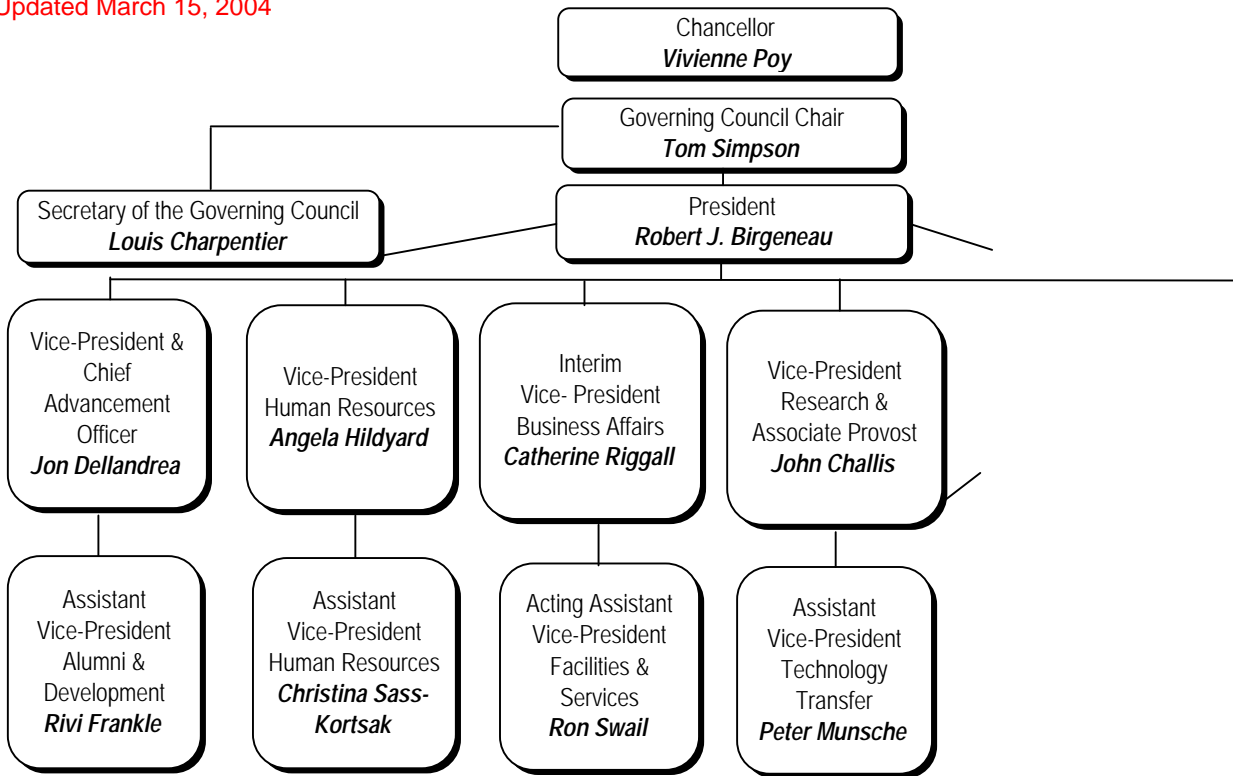
General

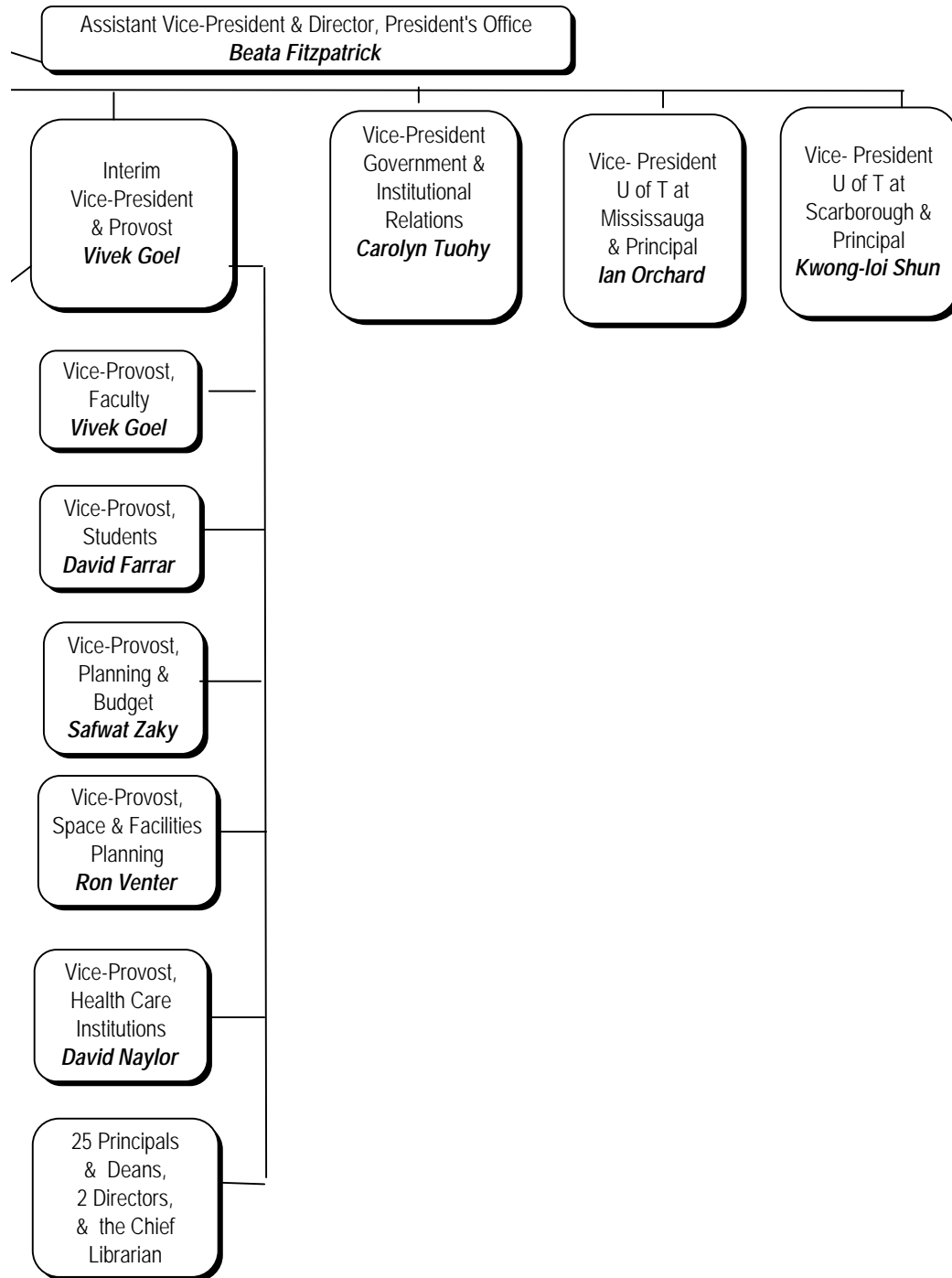
Organization of Senior Administration	4
Major Academic Divisions	6
Degrees, Diplomas and Certificates Offered	10

ORGANIZATION OF SENIOR ADMINISTRATION

2003-2004

Updated March 15, 2004





MAJOR ACADEMIC DIVISIONS

2003-2004

Faculty of Applied Science and Engineering

Aerospace Studies, Institute for
Biomaterials and Biomedical Engineering, Institute of
Chemical Engineering and Applied Chemistry
Civil Engineering
Edward S. Rogers Sr. Electrical and Computer Engineering
Engineering Science, Division of
Environmental Engineering, Division of
Materials Science and Engineering
Mechanical and Industrial Engineering
Mineral Engineering, Lassonde Program

Faculty of Architecture, Landscape, and Design

Faculty of Arts and Science - Departments (St. George Campus)

Anthropology
Astronomy & Astrophysics
Botany
Chemistry
Classics
Commerce & Finance Program
Comparative Literature, Centre for
Computer Science
East Asian Studies
Economics
English
Environment, Division of the
Fine Art
French
Geography
Geology
Germanic Languages & Literatures
History
History & Philosophy of Science & Technology, Institute for
Human Biology Division
Italian Studies
Linguistics
Mathematics
Medieval Studies Centre
Near & Middle Eastern Civilizations
Philosophy
Physics
Political Science
Psychology
Religion, Centre for the Study of
Religion
Slavic Languages & Literatures
Sociology
Spanish & Portuguese
Statistics
Zoology

MAJOR ACADEMIC DIVISIONS (continued)

2003-2004

Faculty of Arts and Science - Colleges (St. George Campus)

Constituent Colleges:

- Innis College
- New College
- University College
- Woodsworth College

Federated Colleges:

- St. Michael's College
- Trinity College
- Victoria College

School of Continuing Studies

Faculty of Dentistry

Faculty of Forestry

Centres and Institutes

- Asian Institute at the University of Toronto
- Criminology, Centre of
- Drama, Centre for the Study of
- Environmental Studies, Institute for
- Human Development, Life Course and Aging, Institute for
- Industrial Relations, Centre for
- International Relations, Centre for
- Knowledge Media Design Institute
- Munk Centre for International Studies
- Museum Studies Program
- Policy Analysis, Institute for
- Russian and East European Studies, Centre for
- South Asian Studies, Centre for
- Theoretical Astrophysics, Canadian Institute for
- Urban and Community Studies, Centre for

School of Graduate Studies

- Division I - Humanities
- Division II - Social Sciences
- Division III - Physical Sciences
- Division IV - Life Sciences

Faculty of Information Studies

- Mcluhan Program in Culture and Technology

Faculty of Law

Joseph L. Rotman School of Management

MAJOR ACADEMIC DIVISIONS (continued)

2003-2004

Faculty of Medicine

Anaesthesia
Banting and Best Department of Medical Research
Biochemistry
Biomaterials and Biomedical Engineering, Institute of (joint institute with Faculty of Applied Science and Engineering)
Drug Research, Institute for (joint institute with Faculty of Pharmacy)
Family and Community Medicine
Health Policy, Management and Evaluation
Immunology
Laboratory Medicine and Pathobiology
Medical Biophysics
Medical Genetics and Microbiology
Medical Imaging
Medical Science, Institute of
Medicine
Nutritional Sciences
Obstetrics and Gynaecology
Occupational Therapy
Ophthalmology and Vision Sciences
Otolaryngology
Paediatrics
Pharmacology
Physical Therapy
Physiology
Psychiatry
Public Health Sciences
Radiation Oncology
Rehabilitation Science
Speech-Language Pathology
Surgery

Faculty of Music

Canadian Music Education Research Centre
Canadian Music, Institute for
History & Culture of Music
Music Education
Musical Theory & Composition
Opera
Performance

Faculty of Nursing

MAJOR ACADEMIC DIVISIONS (continued)

2003-2004

OISE/UT

Adult Education and Counseling Psychology
Child Study Institute
Curriculum, Teaching and Learning
Human Development and Applied Psychology
Sociology and Equity Studies in Education
Theory and Policy Studies in Education

Leslie L. Dan Faculty of Pharmacy

Drug Research, Institute for (joint institute with Faculty of Medicine)

Faculty of Physical Education and Health

Faculty of Social Work

Anti-Racism, Multiculturalism & Native Issues (AMNI) Initiative
Bell Canada Child Welfare Research Unit
Centre for Applied Social Research

Transitional Year Program

University of Toronto at Mississauga

Humanities
Institute of Communication and Culture
Sciences
Social Sciences

University of Toronto at Scarborough

Department of Computer & Mathematical Sciences
Department of Humanities
Department of Life Sciences
Division of Management
Department of Physical & Environmental Sciences
Department of Social Sciences

Woodsworth College

Professional and International Programs
Millie Rotman Shime Academic Bridging Program
Millie Rotman Shime Pre-University Mathematics Program

DEGREES, DIPLOMAS AND CERTIFICATES OFFERED

2003-2004

UNDERGRADUATE AND FIRST PROFESSIONAL DEGREES

Faculty of Applied Science and Engineering:

Bachelor of Applied Science B.A.Sc.

Faculty of Arts and Science

St. George Campus:

Honours Bachelor of Arts Hon.B.A.

Honours Bachelor of Science Hon.B.Sc.

Bachelor of Commerce B.Com.

University of Toronto at Mississauga:

Honours Bachelor of Arts Hon.B.A.

Honours Bachelor of Science Hon.B.Sc.

Bachelor of Commerce B.Com.

University of Toronto at Scarborough:

Honours Bachelor of Arts Hon.B.A.

Bachelor of Arts* B.A.

Honours Bachelor of Science Hon.B.Sc.

Bachelor of Science* B.Sc.

Bachelor of Business Administration B.B.A.

*effective summer 2004, 15-credit BA/BSc Program will be discontinued

Faculty of Dentistry:

Doctor of Dental Surgery D.D.S.

Faculty of Law:

Juris Doctor J.D.

Faculty of Medicine:

Doctor of Medicine M.D.

Bachelor of Science, Medical Radiation Sciences B.Sc.Med.Rad.Sc.

Faculty of Music:

Bachelor of Music Mus.Bac.

Bachelor of Music in Performance Mus Bac.Perf.

Faculty of Nursing:

Bachelor of Science in Nursing B.Sc.N.

OISE/UT:

Bachelor of Education B.Ed.

Leslie L. Dan Faculty of Pharmacy:

Doctor of Pharmacy Pharm.D.

Bachelor of Science in Pharmacy B.Sc.Pharm.

Faculty of Physical Education and Health:

Bachelor of Physical and Health Education B.P.H.E.

DEGREES, DIPLOMAS AND CERTIFICATES OFFERED (continued)
2003-2004

**UNDERGRADUATE AND FIRST PROFESSIONAL DIPLOMAS
AND CERTIFICATES**

Faculty of Dentistry:

Certificate of Qualification in Dentistry Cert.Q.P.Dent.

Faculty of Music:

Artist Diploma Art.Dip.Mus.

Faculty of Nursing:

Certificate as a Nurse Practitioner
(Primary Health Care) Cert.N.P.(PHC)

OISE/UT:

Diploma in Technical Education Dip.T.Ed.

University of Toronto at Scarborough:

Certificate in Business Cert.Bus.

Woodsworth College:

Certificate in Human Resource Management C.H.R.M.
Certificate in Teaching English as a Second Language C.T.E.S.L.

DEGREES, DIPLOMAS AND CERTIFICATES OFFERED (continued)

2003-2004

GRADUATE DEGREES**School of Graduate Studies:**

Juris Doctor and Doctor of Philosophy	J.D./Ph.D.
Juris Doctor and Master of Business Administration	J.D./M.B.A.
Juris Doctor and Master of Arts (Economics)	J.D./M.A.
Juris Doctor and Collaborative MA in International Relations	J.D./M.A.
Juris Doctor and Master of Social Work	J.D./M.S.W.
Doctor of Dentistry and Doctor of Philosophy	D.D.S./Ph.D.
Doctor of Education	Ed.D.
Doctor of Juridical Science	S.J.D.
Doctor of Medicine and Doctor of Philosophy	M.D./Ph.D.
Doctor of Music	Mus. Doc.
Doctor of Philosophy	Ph.D.
Master of Applied Science	M.A.Sc.
Master of Architecture	M.Arch.
Master of Arts	M.A.
Master of Biotechnology	M.Biotech
Master of Business Administration	M.B.A.
Master of Business Administration and Master of Arts in Russian and East European Studies	M.B.A./M.A.(REES)
Master of Business Administration and Master of Nursing	M.B.A./M.N.
Master of Business Administration and Jeffrey Skoll Bachelor of Applied Science	M.B.A./B.A.Sc.
Master of Education	M.Ed.
Master of Engineering	M.Eng.
Master of Engineering in Design and Manufacturing	M.Eng.D.M.
Master of Engineering in Telecommunications	M.Eng.Tel.
Master of Financial Economics	M.F.E.
Master of Forest Conservation	M.F.C.
Master of Health Science	M.H.Sc.
Master of Health Science in Health Administration/ Master of Social Work	M.H.Sc./M.S.W.
Master of Industrial Relations	M.I.R.
Master of Information Studies	M.I.St.
Master of International Trade in Forest Products	M.T.F.P.
Master of Landscape Architecture	M.L.A.
Master of Laws	LL.M.
Master of Management & Professional Accounting	M.M.P.A.
Master of Mathematical Finance	M.M.F.
Master of Museum Studies	M.M.St.
Master of Music	Mus.M.
Master of Nursing	M.N.
Master of Science	M.Sc.
Master of Science in Biomedical Communications	M.Sc.BMC.
Master of Science in Forestry	M.Sc.F.
Master of Science in Occupational Therapy	M.Sc.O.T.
Master of Science in Planning	M.Sc.Pl.
Master of Science in Physical Therapy	M.Sc.P.T.
Master of Social Work	M.S.W.
Master of Spatial Analysis	M.S.A.
Masters in Studies in Law	M.S.L.
Master of Teaching	M.T.
Master of Urban Design	M.U.D.
Master of Urban Design Studies	M.U.D.S.
Master of Visual Studies	M.V.S.

DEGREES, DIPLOMAS AND CERTIFICATES OFFERED (continued)
2003-2004

**GRADUATE DEGREES WITH ADVANCED SPECIALTY TRAINING,
GRADUATE DIPLOMAS AND GRADUATE CERTIFICATES**

Faculty of Applied Science and Engineering:

Professional Pilot and Aviation Management Diploma Dip.P.P.A.M.

Faculty of Dentistry:

M.Sc. Advanced Dental Specialty Degree Program:

Dental Anaesthesia
Dental Public Health
Endodontics
Oral Pathology
Oral Pathology and Medicine
Oral Radiology
Oral and Maxillofacial Surgery and Anaesthesia
Orthodontics
Paediatric Dentistry
Periodontology
Prosthodontics

Faculty of Information Studies:

Graduate Diploma of Advanced Study in Information Studies G.Dip.ISt

Faculty of Medicine:

Diploma in Child Psychiatry D.Child Psych.
Diploma in Clinical Chemistry D.Cl.Chem.
Diploma in Industrial Health D.I.H.
Diploma in Ophthalmic Science D.Oph.Sci.
Post-Doctoral training in Medical Microbiology

Faculty of Music:

Diploma in Operatic Performance Dip.Op.Perf.
Advanced Certificate in Performance Adv.Cert.Perf.

Faculty of Nursing:

Post Masters Nurse Practitioner Diploma Dip.N.P.

Faculty of Social Work:

Diploma in Social Work Research Res.Dip.S.W.

OISE

Diploma Program in Holocaust & Genocide Education D.H.G.E.

Josph L. Rotman School of Management

Advanced Program in Human Resources Management
Advanced Program in Managing Strategic Change
Diploma in Investigative & Forensic Accounting D.I.F.A.

Blank page

Part B

Finances

University of Toronto Financial Statements 2002-03	
Statement of Operations	16
Changes in Surplus/Deficit	18
Operating Fund Expense Summary	19
Operating Fund Expenses: Academic Expense Summary	20
Restricted Funds	21
University of Toronto Budget Reports	
Expense Budget Summary	22
Academic Costs	23

UNIVERSITY OF TORONTO FINANCIAL STATEMENTS 2002-03

STATEMENT OF OPERATIONS

for the year ended April 30, 2003

(with comparative figures for the year ended April 30, 2002)

(millions of dollars)

	OPERATING FUND	ANCILLARY OPERATIONS	CAPITAL FUND	RESTRICTED FUNDS	TOTAL 2003	TOTAL 2002
Revenues						
Government Grants - general operations	422.7				422.7	396.2
Student Fees	374.5	5.1	1.3		380.9	333.7
Donations		0.1	7.6	28.9	36.6	34.3
Government & other grants - restricted purposes			23.9	198.2	222.1	211.2
Contract research	5.7			20.9	26.6	30.5
Sales, services and sundry income	61.2	96.5	1.7		159.4	149.6
Total Revenues	864.1	101.7	34.5	248.0	1,248.3	1,155.5

UNIVERSITY OF TORONTO FINANCIAL STATEMENTS 2002-03

STATEMENT OF OPERATIONS (continued)

for the year ended April 30, 2003

(with comparative figures for the year ended April 30, 2002)

(millions of dollars)

	OPERATING FUND	ANCILLARY OPERATIONS	CAPITAL FUND	RESTRICTED FUNDS	TOTAL 2003	TOTAL 2002
Expenses						
Salaries and benefits	653.3	7.0		140.5	800.8	714.7
Investment loss (income)	(14.3)	(1.3)	(3.1)	74.3	55.6	3.4
Materials and supplies	62.9	2.5		88.0	153.4	166.1
Scholarships, fellowships and bursaries	98.8				98.8	86.7
Amortization of capital assets	2.6	5.6	62.9		71.1	61.4
Cost of sales and services		67.4			67.4	63.0
Utilities	34.1	5.0			39.1	35.1
Repairs and maintenance	16.6	7.5	9.8	4.9	38.8	57.3
Travel and conferences	11.7			17.1	28.8	26.6
Interest	8.7	6.7			15.4	13.4
External contracted services	12.2			2.6	14.8	16.7
Telecommunications	8.6			1.0	9.6	9.4
Other	12.6		2.0	4.5	19.1	18.0
Total Expenses	907.8	100.4	71.6	332.9	1,412.7	1,271.8

UNIVERSITY OF TORONTO FINANCIAL STATEMENTS 2002-03

CHANGES IN SURPLUS/DEFICIT

for the year ended April 30, 2003

(with comparative figures for the year ended April 30, 2002)

(millions of dollars)

	OPERATING FUND	ANCILLARY OPERATIONS	CAPITAL FUND	RESTRICTED FUNDS	TOTAL 2003	TOTAL 2002
Net Income (loss)	(43.7)	1.3	(37.1)	(84.9)	(164.4)	(116.3)
Net transfers between funds	(11.4)	(2.6)	(0.1)	14.1		
Transfer of capital assets	(33.1)		33.1			
Change in committed capital	72.7	1.1	(20.8)	5.3	58.3	73.5
Change in equity in capital assets		0.6	4.8		5.4	(27.3)
Transfers of donations to endowments				(8.2)	(8.2)	(4.7)
Transfer from internally and externally restricted endowments				73.7	73.7	62.1
Net change in surplus (deficit) for the year	(15.5)	0.4	(20.1)		(35.2)	(12.7)
Surplus (deficit), beginning of the year	(18.1)	(1.3)	(12.6)		(32.0)	(19.3)
Surplus (deficit), end of year	(33.6)	(0.9)	(32.7)		(67.2)	(32.0)

UNIVERSITY OF TORONTO FINANCIAL STATEMENTS 2002-03

OPERATING FUND EXPENSE SUMMARY

Expense Summary for the year ended April 30, 2003

(with comparative totals for the year ended April 30, 2002)

(thousands of dollars)

	ACADEMIC SALARIES	OTHER SALARIES	STAFF BENEFITS	TOTAL SALARIES AND BENEFITS	SUPPLIES AND OTHER EXPENSES	SCHOLARSHIPS FELLOWSHIPS BURSARIES	TOTAL	ELIMINATIONS AND RECLASSIFICATIONS	TOTAL DIVISIONAL EXPENSE
Academic	\$301,493	\$127,319	\$81,070	\$509,882	\$116,637		\$626,519	(\$28,965)	\$597,554
Academic Services	8,450	25,318	6,057	39,825	35,428		75,253	(2,077)	73,176
Campus & Student Services		10,408	1,663	12,071	9,364		21,435	3	21,438
Student Assistance		2,449	289	2,737	1,522	98,819	103,079	2,960	106,039
Operation & Maintenance of Physical		32,520	5,976	38,496	75,783		114,279	(34,834)	79,445
Administration		36,119	6,788	42,907	15,848		58,755	(8,595)	50,160
Interest								8,732	8,732
Renovations and Alterations					5,289		5,289	(5,986)	(697)
Amortization								2,559	2,559
Other Expenditures		5,312	1,598	6,910	14,758		21,668	(4,909)	16,759
Sub-Total	309,944	239,444	103,440	652,828	274,628	98,819	1,026,276	(71,112)	955,164
Eliminations	(13,938)	(11,506)	25,951	507	(\$71,619)		(71,112)		
Total Expenses	\$296,006	\$227,939	\$129,391	\$653,335	\$203,009	\$98,819	\$955,164		955,164
2001-02 Comparatives	\$270,228	\$206,718	\$101,902	\$578,848	\$190,366	\$86,866	856,080		
Percentage Change	9.54%	10.27%	26.98%	12.87%	6.64%	13.76%	11.57%		

Note: "Eliminations and Reclassifications" column represent external recovery of salaries and benefits as well as internal departmental changes between different functional groups.

UNIVERSITY OF TORONTO FINANCIAL STATEMENTS 2002-03

OPERATING FUND EXPENSES:

ACADEMIC EXPENSE SUMMARY

For the year ending April 30, 2003

(thousands of dollars)

	NET EXPENSES
	2002-03
Arts & Science, Colleges & Schools:	
Arts & Science	\$147,446
Federated Colleges Block Grant	9,533
Graduate Centres & Institutes	7,649
Mississauga, University of Toronto at - Academic	34,995
Scarborough, University of Toronto at - Academic	33,998
School of Continuing Studies	11,202
School of Graduate Studies	4,276
Transitional Year Program	1,246
Woodsworth College	12,911
Health Science Faculties/Schools:	
Dentistry	\$21,041
Medicine	85,377
Nursing	5,829
Pharmacy	7,656
Physical Education and Health	15,303
Other Professional Faculties:	
Applied Science & Engineering	\$54,934
Architecture, Landscape, and Design	4,816
Forestry	2,400
Information Studies	3,944
Law	13,872
Management	32,703
Music	7,983
OISE/UT	54,976
Social Work	4,688
Other Academic	\$18,776
Total Academic Expense	\$597,554

UNIVERSITY OF TORONTO FINANCIAL STATEMENTS 2002-03

RESTRICTED FUNDS

Endowments and Expendable Funds at Market

for the year ending April 30, 2003 (with comparative figures for the year ended April 30, 2002)

(thousands of dollars)

	ENDOWMENT FUNDS		EXPENDABLE FUNDS	
	2003	2002	2003	2002
l'Anson Fund	\$3,011	\$5,577	\$4,359	\$4,164
Connaught Funds	73,376	98,581	3,964	6,592
Departmental Funds	115,046	116,537	119,396	110,712
Faculty Endowment Funds	314,495	324,464	7,018	8,107
General Endowment Funds		19,155		
Miscellaneous Funds	28,756	31,533	15,989	14,982
Ontario Student Opportunity Trust Funds	258,118	304,639	20,142	22,857
Research Funds	100,268	117,444	140,259	143,726
Student Aid Funds	169,171	181,740	23,895	25,871
Supplementary Retirement Arrangement			89,065	91,962
Total University of Toronto	\$1,062,241	\$1,199,670	\$424,087	\$428,973
Affiliated Universities	231,510	246,137	na	na
Total	\$1,293,751	\$1,445,807	na	na

UNIVERSITY OF TORONTO BUDGET REPORTS

EXPENSE BUDGET SUMMARY

Time Series Comparison of Major Budget Categories, based on net expense budgets

2001-02 to 2003-04

(Millions of dollars)

	2003-04	% INCREASE OVER PRIOR YEAR	2002-03	% INCREASE OVER PRIOR YEAR	2001-02
Academic	523.2	12%	467.1	11%	421.3
Academic Services	58.5	3%	56.8	5%	54.1
Campus & Student Services	1.2	59%	0.7	-399%	(0.2)
Student Assistance	63.0	-11%	70.4	14%	61.7
Facilities & Services	37.3	4%	35.7	12%	32.0
Utilities	30.7	1%	30.3	18%	25.7
Alterations, Renovations, Lease Costs	1.7	-1%	1.7	-2%	1.8
Administration	60.3	3%	58.6	3%	56.7
General University	35.5	10%	32.2	33%	24.2
Municipal Taxes	3.6	8%	3.3	3%	3.2
Total	815.0		757.0		680.5
Administrative costs as % of Academic Costs	12%		13%		13%
Administrative Costs as % of Academic Costs & Academic Services Costs	10%		11%		12%
General University Costs as % of Academic Costs	7%		7%		6%

UNIVERSITY OF TORONTO BUDGET REPORTS

ACADEMIC COSTS

Time Series Comparison of Major Academic Costs, based on Net Expense Budgets

2001-02 to 2003-04

(Millions of dollars)

	2003-04	% OF BUDGET	% INCREASE OVER PRIOR YEAR	2002-03	% OF BUDGET	% INCREASE OVER PRIOR YEAR	2001-02	% OF BUDGET
Gross Expense Budget	777.6			709.4			630.4	
Recoveries	(127.9)			-116.4			(95.0)	
Divisional Income	(126.5)			-125.8			(114.0)	
Net Expense Budget	523.2		12%	467.2		11%	421.4	
Arts & Science, Colleges & Schools	234.2	45%	8%	216.0	46%	3%	209.6	50%
Health Sciences	95.1	18%	7%	89.2	19%	3%	86.5	21%
Other Professional Faculties	106.9	20%	15%	92.7	20%	12%	82.6	20%
Other Academic Costs	87.0	17%	26%	69.3	15%	62%	42.7	10%
	523.2	100%		467.2	100%		421.4	100%
Instructional Salaries	420.8	54%	8%	389.4	55%	12%	348.2	55%
Other Salaries & Wages	118.1	15%	5%	112.9	16%	12%	100.5	16%
Benefits	83.0	11%	5%	78.9	11%	11%	71.0	11%
Books & Equipment	8.9	1%	-10%	9.9	1%	27%	7.8	1%
Supplies & Services	115.6	15%	16%	99.3	14%	15%	86.4	14%
Student Awards	31.2	4%	64%	19.0	3%	15%	16.5	3%
	777.6	100%		709.4	100%		630.4	100%

Blank page

Part C

Research

Research Population	26
Revenue from Externally Sponsored Research	27
Academic Linkages with International Institutions	28
Technology Transfer Activities:	
a) Invention Disclosures	29
b) Spin-off Companies	29
c) Industrial Contracts & Grants	30
d) Government Funding Leveraged by Industrial Collaboration	30

RESEARCH POPULATION

September 2003

	HUMANITIES	SOCIAL SCIENCES	PHYSICAL SCIENCES	LIFE SCIENCES	TOTAL
Full-Time Faculty	429	652	494	812	2,387
Part-Time Faculty	22	15	17	174	228
Status-Only Faculty	41	117	130	2,532	2,820
Full-Time Research Associates	5	14	83	81	183
Part-Time Research Associates	1	4	13	5	23
Post-Doctoral Fellows	18	29	506	1,060	1,613
Graduate Students	1,278	4,762	2,218	3,083	11,341

Notes:

1. Numbers shown here may differ from Full Time Faculty counts in other tables because of selection criteria for inclusion in the research population.
2. Faculty includes professorial ranks only.
3. Faculty members may have multiple appointments; in 2003, only the main appointment was counted in the research population.
4. The figure for post-doctoral fellows includes those at the affiliated hospitals.

REVENUE FROM EXTERNALLY SPONSORED RESEARCH

(thousands of dollars)

	2000-2001	2001-2002	2002-2003
University of Toronto			
Grants and Contracts	\$250,859	\$215,413	\$255,368
Donations	3,485	2,208	1,562
Subtotal	254,344	217,621	256,930
Overhead	15,227	32,299	14,694
Total, University of Toronto	\$269,571	\$249,919	\$271,624
Affiliated Hospitals*	\$215,666	\$262,512	\$256,978 **
Grand Total	\$485,237	\$512,431	\$528,602 **

* Overhead excluded.

** Estimate only, using last year's revenue figure for the Affiliated Hospitals

ACADEMIC LINKS BETWEEN THE UNIVERSITY OF TORONTO AND INTERNATIONAL INSTITUTIONS

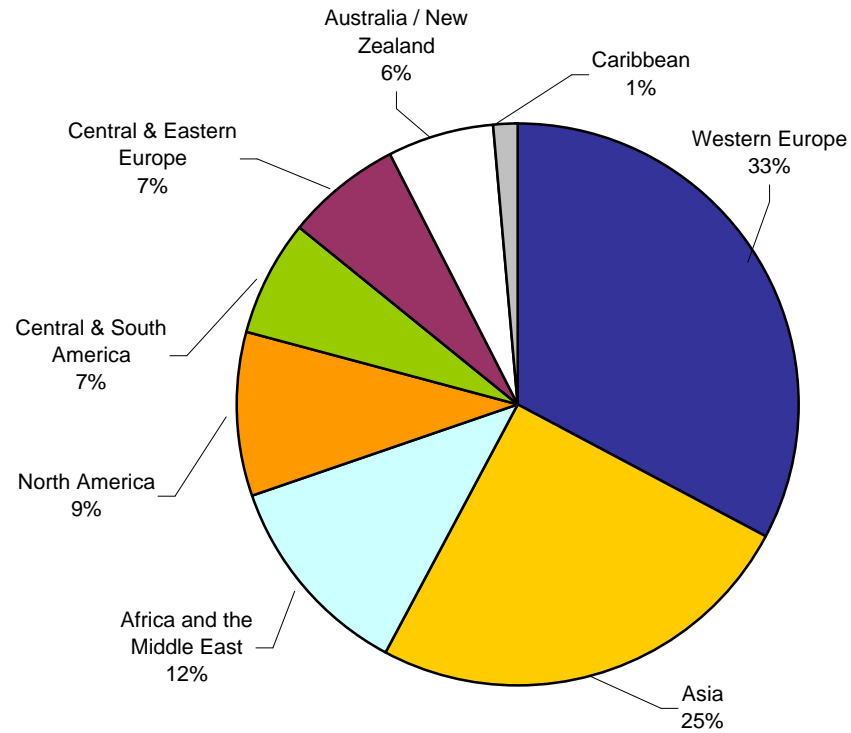
September 2003

REGION	NUMBER OF MOU'S*
Western Europe	49
Asia	37
Africa and the Middle East	18
North America	14
Central & South America	10
Central & Eastern Europe	10
Australia / New Zealand	9
Caribbean	2
Total	149

*MOU's: Memoranda of Understanding are formal arrangements between institutions, which outline how they plan to cooperate over a specified period of time (normally, five years).

The areas included in MOU's are:

- joint research activities,
- participation in each institution's seminars and academic meetings,
- exchange of academic materials,
- short-term academic programs, and
- exchange of students.



TECHNOLOGY TRANSFER ACTIVITIES

INVENTION DISCLOSURES

	2000-2001	2001-2002	2002-2003
Number of Inventions Disclosed*	123	122	138
Gross Royalties			
Innovations Foundation	\$3,260,247	\$1,356,033	\$1,177,995
Other	430,000	532,961	1,777,064
Total Gross Royalties	\$3,690,247	\$1,888,994	\$2,955,059

* Excluding affiliated hospital inventions.

SPIN-OFF COMPANIES

	2000-2001	2001-2002**	2002-2003
Number of Active companies	94	94	96
Number of Employees in Canada	4,264	4,264	3,638
Reported Annual Revenue	\$640,000,000	\$640,000,000	\$821,000,000

** As new survey was not conducted for 2001-02, 2000-01 data are shown.

TECHNOLOGY TRANSFER ACTIVITIES (continued)

INDUSTRIAL CONTRACTS AND GRANTS*

(April 2001 - March 2002)

Contracts	\$28,930,700
Grants	\$15,958,658
Total industrial research funding	\$44,889,358

GOVERNMENT FUNDING LEVERAGED BY INDUSTRIAL COLLABORATION*

Networks of Centres of Excellence (April 2001 - March 2002)	UofT participated in 17 of 19	\$9,859,998
Ontario Centres of Excellence (April 2001 - March 2002)	UofT participated in 4 of 4	\$8,894,359
Ontario Research and Development Challenge Fund (April 2001 - March 2002)		\$15,323,158
Federal Granting Councils: (April 2002 - March 2003)		
NSERC	University/Industry Programs**	\$3,497,028
CIHR	University/Industry Programs**	\$2,835,859
Total government funding leveraged by industrial collaboration		\$40,410,401

* Includes the affiliated hospitals.

** Excludes the Networks of Centres of Excellence.

Note that no university/industry funding was received from SSHRC by the University in 2002-03.

Part D

Students

Enrolment by Faculty/College	32
Enrolment: Age and Gender Balance	34
International Students Enrolment by Geographic Origin	35
International Students - Geographic Origin: 5 Year Trend	36
Ten Year Enrolment Trends, All Students	39
Gender Balance of Graduate and Undergraduate Enrolments by Field of Study	40
Undergraduate Intake by Faculty	41
Graduate Intake by Faculty	42
Total Intake	42
Degrees Awarded by Gender	43
Tuition Fees:	
a) Domestic and International Students	44
b) Self-Funded Programs	48
c) OISE/UT Schools	49

ENROLMENT BY FACULTY/COLLEGE

November 1, 2002

FACULTY/COLLEGE	UNDERGRADUATE			GRADUATE DEGREES/ GRADUATE DIPLOMAS			ALL STUDENTS		FTE STUDENTS		
	Full- Time	Part- Time	% Female	Full- Time	Part- Time	% Female	Total	% Female	Under- graduate	Graduate	Total
St. George Campus	16,925	6,562	59	2,417	176	48	26,080	58	18,722	2,471	21,192
Scarborough Campus	5,172	1,590	59	50	1	63	6,813	59	5,564	50	5,614
Mississauga Campus	5,190	1,928	60	122	0	58	7,240	60	5,657	122	5,779
Total Arts & Science	27,287	10,080	60	2,589	177	48	40,133	59	29,942	2,643	32,585
Applied Science & Engineering	3,752	138	27	1,117	322	24	5,329	26	3,848	1,214	5,062
Architecture, Landscape & Design	0	2	0	229	6	42	237	41	1	231	232
Dentistry	345	3	51	101	1	27	450	45	346	101	448
Forestry	---	---	na	97	1	48	98	48	---	97	97
Graduate Centres & Institutes	---	---	na	241	41	65	282	65	---	253	253
Information Studies	---	---	na	171	106	64	277	64	---	203	203
Law	525	50	50	77	6	53	658	50	530	79	609
Management	---	---	na	489	273	33	762	33	---	571	571
Management at UT Mississauga	---	---	na	95	59	58	154	58	---	113	113
Medicine	2,960	1	46	1,724	172	60	4,857	52	2,961	1,776	4,737
Music	419	25	58	130	7	59	581	59	453	133	586

ENROLMENT BY FACULTY/COLLEGE (continued)

November 1, 2002

FACULTY/COLLEGE	UNDERGRADUATE			GRADUATE DEGREES/ GRADUATE DIPLOMAS			ALL STUDENTS		FTE STUDENTS		
	Full- Time	Part- Time	% Female	Full- Time	Part- Time	% Female	Total	% Female	Under- graduate	Graduate	Total
Nursing	187	5	89	117	238	97	547	94	186	188	375
Occupational Therapy	---	---	---	109	1	95	110	95	---	109	109
OISE/UT	1,261	1,810	74	1,297	1,045	76	5,413	75	1,666	1,611	3,276
Pharmacy	623	7	71	70	11	58	711	69	598	73	671
Physical Education & Health	403	31	63	37	2	56	473	62	395	38	433
Physical Therapy	63	0	73	108	0	85	171	81	63	108	171
Social Work	---	---	---	264	57	86	321	86	---	281	281
Transitional Year Program	73	153	60	---	---	---	226	60	102	---	102
Woodworth Certificate and Diploma Programs	17	183	73	0	10	100	210	74	91	3	94
Grand Total	37,915	12,488	57	9,062	2,535	56	62,000	57	41,183	9,824	51,008

Note: Excludes 694 FTE students in the Toronto School of Theology and 31 Pharmacy residents.

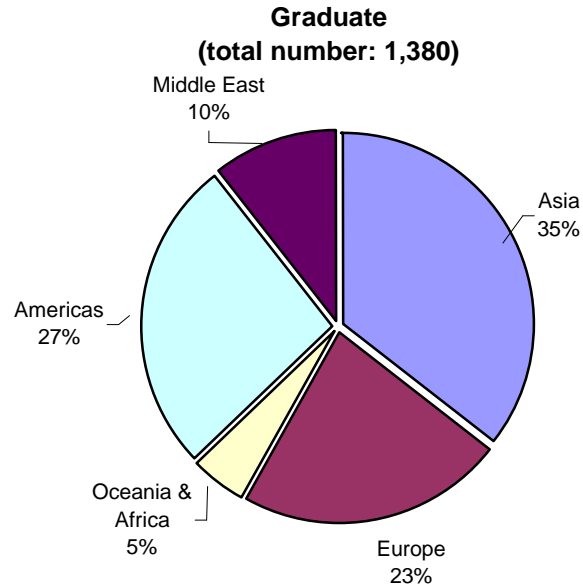
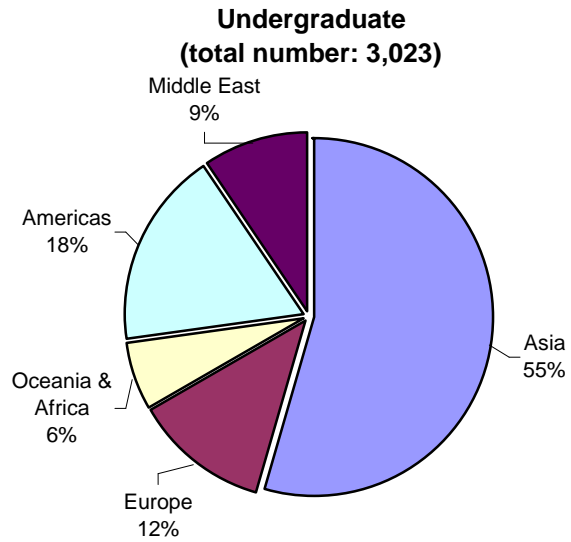
	HEADCOUNT	FTE
First Entry Undergraduate	42,363	34,742
Doctoral Stream Graduate	7,168	6,803
Undergraduate and Graduate Professional	12,469	9,463
Total	62,000	51,008

ENROLMENT: AGE AND GENDER BALANCE**1992 vs. 2002**

November 1

	1992			2002		
	Male	Female	Total	Male	Female	Total
Full-Time Undergraduate						
Number	15,208	16,191	31,399	16,426	21,489	37,915
Percent	48.4%	51.6%	100.0%	43.3%	56.7%	100.0%
Median Age	21.9	21.5	21.7	21.3	21.2	21.2
Full-Time Graduate						
Number	3,319	2,629	5,948	4,150	4,912	9,062
Percent	55.8%	44.2%	100.0%	45.8%	54.2%	100.0%
Median Age	28.3	28.1	28.2	28.8	28.2	28.5
Part-Time Undergraduate						
Number	5,028	7,944	12,972	5,103	7,385	12,488
Percent	38.8%	61.2%	100.0%	40.9%	59.1%	100.0%
Median Age	25.9	27.9	27.0	23.8	25.4	24.6
Part-Time Graduate						
Number	1,148	1,009	2,157	944	1,591	2,535
Percent	53.2%	46.8%	100.0%	37.2%	62.8%	100.0%
Median Age	30.5	31.5	30.9	33.4	34.9	34.3

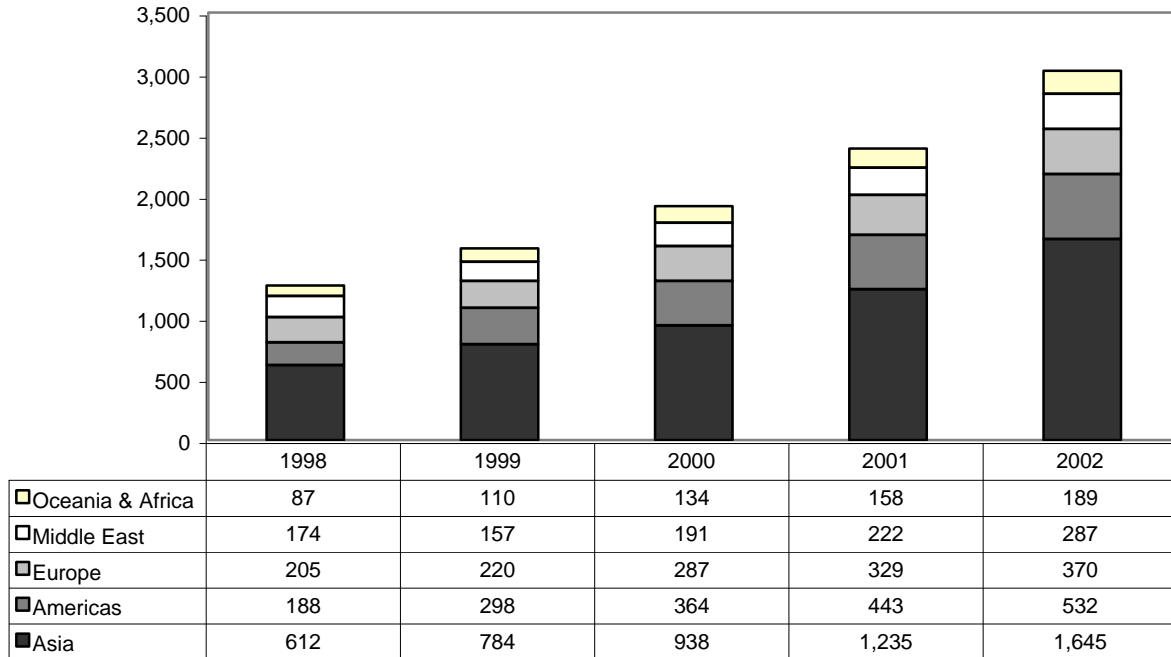
INTERNATIONAL STUDENTS BY GEOGRAPHIC ORIGIN
2002-2003



Note: In 2002-03, the largest percentage of undergraduate international students were from China including Hong Kong (20.7%) followed by the USA (11.8%).
In 2002-03, the largest percentage of graduate international students were from China including Hong Kong (19.1%) followed by the USA (17.5%).

**International Students - Geographic Origin: 5-Year Trend
1998 to 2002**
as at November 1

Undergraduate Students

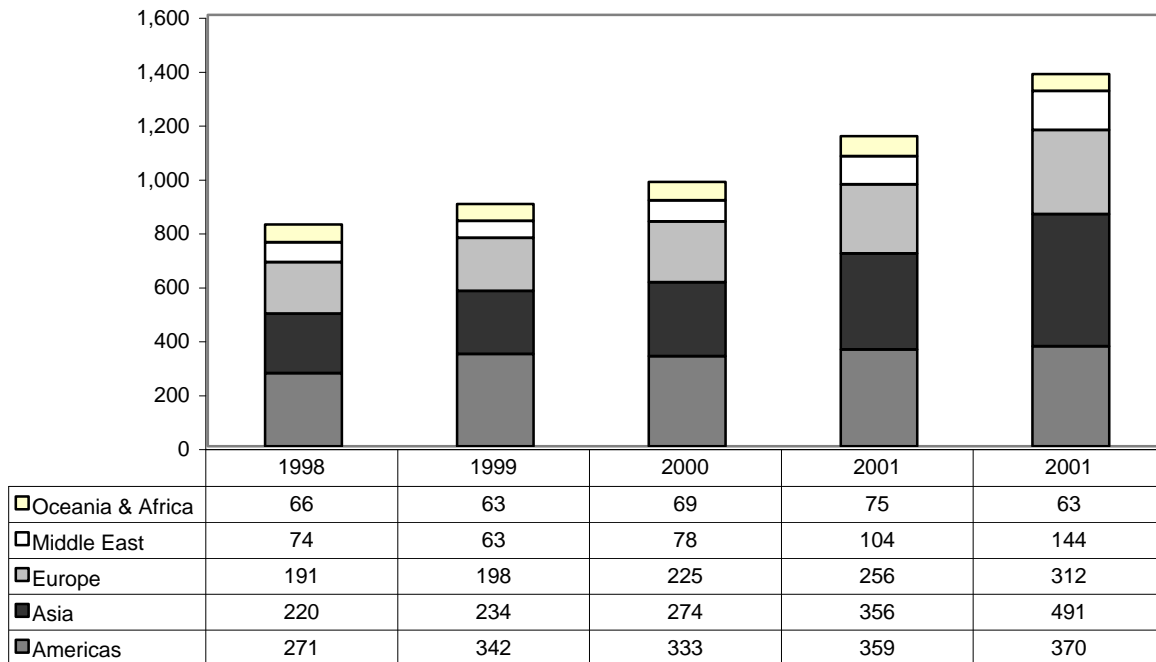


In 1998-99, the largest percentage of undergraduate international students were from Hong Kong (12.1%) followed by the USA (8.9%).

In 2002-03, the largest percentage of undergraduate international students were from China incl. Hong Kong (20.7%)

International Students - Geographic Origin: 5-Year Trend (continued)
1998 to 2002
as at November 1

Graduate Students



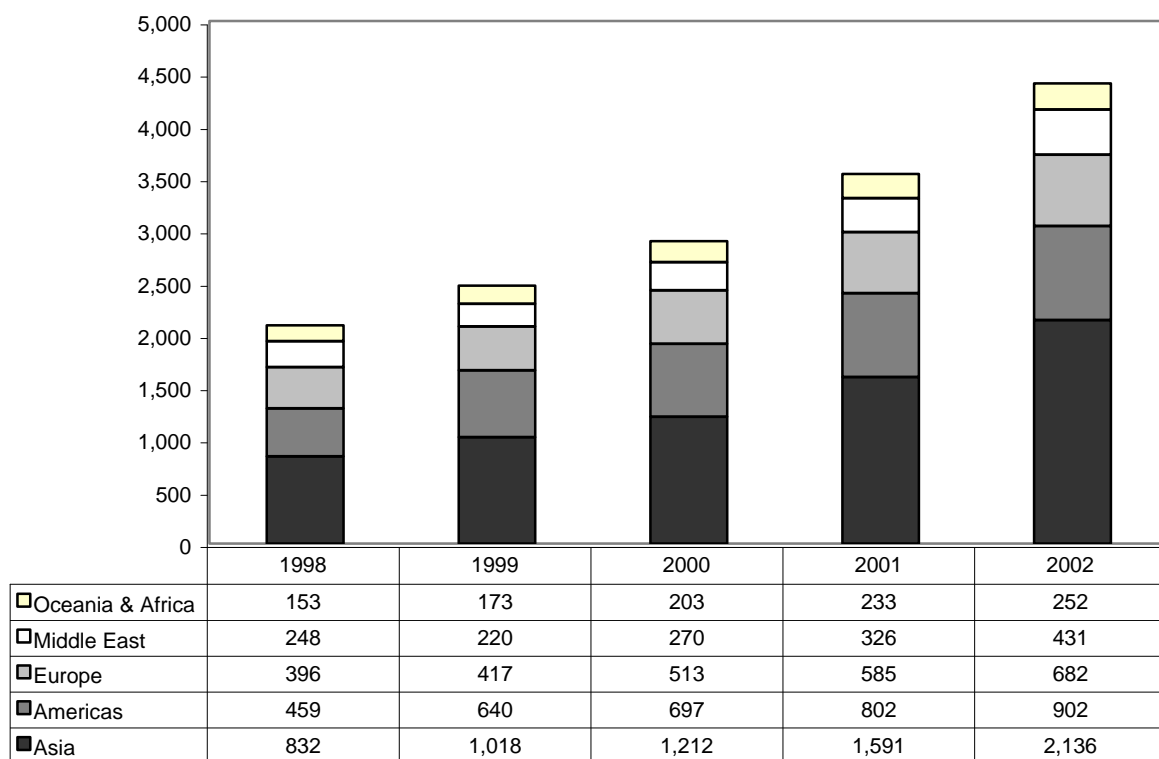
Over one-third of graduate international students were from two countries - USA (17.5%) and China (17.5%).

International Students - Geographic Origin: 5-Year Trend (continued)

1998 to 2002

as at November 1

Total International Students



TEN YEAR ENROLMENT TRENDS, ALL STUDENTS

1993-2002

November 1

	TOTAL STUDENTS*				INTERNATIONAL STUDENTS			
	Undergraduate		Graduate		Undergraduate		Graduate	
	Total	% Female	Total	% Female	Total	% Female	Total	% Female
1993	44,116	55.2%	10,262	52.2%	2,044	48.2%	1,265	36.7%
1994	42,352	55.3%	10,078	53.1%	1,622	46.3%	1,111	38.6%
1995	42,395	55.7%	9,881	53.5%	1,332	44.7%	933	36.0%
1996	42,359	56.3%	9,886	53.4%	1,203	43.2%	823	37.8%
1997	42,362	56.8%	9,874	54.1%	1,141	41.3%	817	37.0%
1998	43,139	56.9%	9,658	54.9%	1,266	43.3%	822	39.1%
1999	44,234	56.8%	9,898	54.8%	1,568	44.4%	899	40.6%
2000	44,964	56.8%	10,163	55.4%	1,914	45.7%	980	40.9%
2001	47,265	57.6%	10,775	56.0%	2,387	47.7%	1,150	42.3%
2002	50,403	57.3%	11,597	56.1%	3,023	49.7%	1,380	43.9%

* Total students includes domestic students and international students.

Note: Excludes students in the Toronto School of Theology.

**GENDER BALANCE OF UNDERGRADUATE AND GRADUATE ENROLMENTS
BY FIELD OF STUDY**

November 1, 2002

STATISTICS CANADA FIELD OF STUDY	UNDERGRADUATE		GRADUATE	
	Total	% Female	Total	% Female
Biological Sciences	3,533	64%	403	56%
Education & Physical Education	3,751	73%	2,370	76%
Engineering & Applied Sciences	4,096	29%	1,753	27%
Fine & Applied Arts	1,193	68%	283	65%
General Arts and Science	10,115	60%	0	n/a
Health Professions	4,615	53%	2,349	67%
Humanities	5,734	63%	1,303	58%
Math & Physical Sciences	3,470	33%	814	32%
Social Sciences	11,960	62%	2,322	53%
Not Specified	1,936	59%	0	n/a
Total	50,403	57%	11,597	56%

Notes: Education includes the Faculty of Physical Education and Health and the Ontario Institute for Studies in Education.
Excludes students in the Toronto School of Theology and Millie Rotman Shime Academic Bridging Program.
Most of the "not specified" group includes first year and special students in Arts and Science.

UNDERGRADUATE INTAKE BY FACULTY

Fall, 2002

	TOTAL HEADCOUNT					PERCENTAGE OF TOTAL HEADCOUNT				
	GTA Area	Other Ontario	Other Canada national	Inter-national	Total	GTA	Other Ontario	Other Canada national	Inter-national	Total
Arts & Science										
Mississauga	1,763	233	73	148	2,217	79.5%	10.5%	3.3%	6.7%	100%
Scarborough	1,953	72	61	136	2,222	87.9%	3.2%	2.7%	6.1%	100%
St George	4,844	682	349	697	6,572	73.7%	10.4%	5.3%	10.6%	100%
Total Arts & Science	8,560	987	483	981	11,011	77.7%	9.0%	4.4%	8.9%	100%
Applied Science	808	92	68	88	1,056	76.5%	8.7%	6.4%	8.3%	100%
Dentistry	47	11	9	8	75	62.7%	14.7%	12.0%	10.7%	100%
Law	67	30	52	18	167	40.1%	18.0%	31.1%	10.8%	100%
OISE/UT	973	385	20	4	1,382	70.4%	27.9%	1.4%	0.3%	100%
Medicine										
B Sc (Med. Radiation Science)	36	35	7	1	79	45.6%	44.3%	8.9%	1.3%	100%
Clinical Chemistry	5	1	0	0	6	83.3%	16.7%	0.0%	0.0%	100.0%
Clinical Epidemiology	3	0	3	1	7	42.9%	0.0%	42.9%	14.3%	100.0%
MD	66	36	22	0	124	53.2%	29.0%	17.7%	0.0%	100%
Post Grad Medical Education	n.a.	n.a.	n.a.	n.a.	n.a.	n.a.	n.a.	n.a.	n.a.	n.a.
Total, Medicine	110	72	32	2	216	50.9%	33.3%	14.8%	0.9%	100%
Music	78	26	15	11	130	60.0%	20.0%	11.5%	8.5%	100%
Nursing	54	25	8	0	87	62.1%	28.7%	9.2%	0.0%	100%
Pharmacy	33	45	7	1	86	38.4%	52.3%	8.1%	1.2%	100%
Physical Education and Health	93	24	1	0	118	78.8%	20.3%	0.8%	0.0%	100%
Total Undergraduate	10,823	1,697	695	1,113	14,328	75.5%	11.8%	4.9%	7.8%	100%

Notes: Excludes Transitional Year Program and Woodsworth diploma & certificate programs.

Undergraduate includes Graduate diplomas in Dentistry, Medicine and Music.

Intake data is not available for Post-Graduate Medical Education

GRADUATE INTAKE BY FACULTY

Fall, 2002

	TOTAL HEADCOUNT					PERCENTAGE OF TOTAL HEADCOUNT				
	GTA Area	Other Ontario	Other Canada	Inter-national	Total	GTA	Other Ontario	Other Canada	Inter-national	Total
Forestry	17	4	4	4	29	58.6%	13.8%	13.8%	13.8%	100%
Information Studies	58	13	6	12	89	65.2%	14.6%	6.7%	13.5%	100%
Management	238	35	39	76	388	61.3%	9.0%	10.1%	19.6%	100%
OISE / UT	242	84	28	38	392	61.7%	21.4%	7.1%	9.7%	100%
School of Graduate Studies										
Div I Humanities	74	36	39	88	237	31.2%	15.2%	16.5%	37.1%	100%
Div II Social Sciences	94	26	39	91	250	37.6%	10.4%	15.6%	36.4%	100%
Div III Physical Sciences	343	57	66	204	670	51.2%	8.5%	9.9%	30.4%	100%
Div IV Life Sciences	345	144	68	44	601	57.4%	24.0%	11.3%	7.3%	100%
Social Work	90	20	14	5	129	69.8%	15.5%	10.9%	3.9%	100%
Total Graduate	1,501	419	303	562	2,785	53.9%	15.0%	10.9%	20.2%	100%

TOTAL INTAKE

Fall, 2002

	TOTAL HEADCOUNT					PERCENTAGE OF TOTAL HEADCOUNT				
	GTA Area	Other Ontario	Other Canada	Inter-national	Total	GTA	Other Ontario	Other Canada	Inter-national	Total
Total Undergraduate	10,823	1,697	695	1,113	14,328	75.5%	11.8%	4.9%	7.8%	100.0%
Total Graduate	1,501	419	303	562	2,785	53.9%	15.0%	10.9%	20.2%	100%
Grand Total	12,324	2,116	998	1,675	17,113	72.0%	12.4%	5.8%	9.8%	100%

UNIVERSITY OF TORONTO DEGREES AWARDED BY GENDER

Calendar Year 2002

STATISTICS CANADA FIELD OF STUDY*	UNDERGRADUATE		MASTERS		DOCTORAL		TOTAL	
	Total	% Female	Total	% Female	Total	% Female	Total	% Female
Humanities	1,411	66%	383	63%	87	51%	1,881	65%
Social Sciences	4,109	68%	1,215	64%	189	69%	5,513	67%
Physical Sciences	1,565	37%	535	33%	128	22%	2,228	35%
Life Sciences	1,595	63%	419	75%	156	48%	2,170	64%
Total	8,680	61%	2,552	59%	560	49%	11,792	60%

- * The category 'Humanities' is the sum of Humanities and Fine & Applied Arts
 The category 'Social Sciences' is the sum of Social Sciences and Education & Physical Education
 The category 'Physical Sciences' is the sum of Math & Physical Sciences and Engineering & Applied Sciences
 The category 'Life Sciences' is the sum of Health Professions and Agricultural & Biological Sciences

Note: Excludes Toronto School of Theology, Certificate and Diploma students.

TUITION FEE SCHEDULE FOR DOMESTIC AND INTERNATIONAL STUDENTS

2003-2004

	DOMESTIC STUDENTS 2003 Entering Cohort	INTERNATIONAL STUDENTS 2003 Entering Cohort
APPLIED SCIENCE & ENGINEERING		
Bachelors	\$7,000	\$14,637
M.Eng.	\$6,737	\$13,157
ARCHITECTURE, LANDSCAPE, AND DESIGN		
M. Arch.	\$6,431	\$12,851
M.L.A.	\$6,431	\$12,851
M.U.D.	\$6,431	\$12,851
ARTS & SCIENCE incl. SCARBOROUGH		
Bachelors	\$4,185	\$10,739
Bachelors - Computer Science and C.C.I.T.	\$4,185	\$10,739
Bachelors - Commerce/Bus Admin	\$4,185	\$10,739
Bachelors - Mgt UTM	\$4,185	\$10,739
Bachelors - UTSC - Joint Programs with Centennial	\$4,185	\$10,739
M.Sc.Pl.	\$6,431	\$10,231
M.U.D.S.	\$6,431	\$10,231
Masters of Spatial Analysis - Joint Program with Ryerson	\$6,431	\$10,231
M.Sc. Biotechnology	\$8,925	\$15,925
DENTISTRY		
D.D.S.	\$17,950	\$30,700
B.Sc. Dent	\$5,367	\$13,781
Graduate Specializations except D.P.H.	\$13,781	\$23,547
M.Sc. Specialty in Dental Public Health	\$6,737	\$13,157
Dental Residents - M.O.H. Funded	\$0	n.a.
Dental Residents - non-M.O.H. Funded	\$17,950	30,700

TUITION FEE SCHEDULE FOR DOMESTIC AND INTERNATIONAL STUDENTS (continued)
 2003-2004

	DOMESTIC STUDENTS 2003 Entering Cohort	INTERNATIONAL STUDENTS 2003 Entering Cohort
FORESTRY		
M.F.C.	\$6,136	\$12,556
INFORMATION STUDIES		
M.I.St.	\$6,136	\$12,556
GDiplSt	\$6,136	\$12,556
LAW		
J.D.	\$16,000	\$23,192
M.S.L.	\$5,442	\$9,242
MANAGEMENT		
M.B.A.	\$25,000	\$29,000
M.F.E	\$17,850	\$21,850
MEDICINE		
Doctor of Medicine	\$16,207	\$28,957
Postgraduate Medical Trainees	\$0	24,783
Health Science Diplomas	\$6,737	\$13,157
Radiation Sciences	\$4,731	\$15,000
M.Sc. Occupational Therapy and Physical Therapy	\$6,737	\$13,157
Master of Health Science	\$6,737	\$13,157
M.Sc.BMC.	\$6,737	\$13,157
M.Sc.BMC. - Combined program with Sheridan College	\$6,737	\$13,157
Combined MD/PhD	\$10,825	\$19,100

TUITION FEE SCHEDULE FOR DOMESTIC AND INTERNATIONAL STUDENTS (continued)

2003-2004

	DOMESTIC STUDENTS 2003 Entering Cohort	INTERNATIONAL STUDENTS 2003 Entering Cohort
MUSIC		
Undergraduate	\$4,185	\$12,026
Operatic Performance Diploma	\$5,948	\$9,748
Mus.M. (Performance)	\$5,948	\$9,748
Mus.M. (Other)	\$5,442	\$9,242
Advanced Certificate in Performance	\$5,948	\$9,748
NURSING		
Second Entry	\$5,616	\$12,036
M.N.	\$6,136	\$12,556
OISE/UT		
B.Ed.	\$4,643	\$12,485
Technical & Vocational Certificates	\$4,643	\$12,485
Joint Master of Teaching in Human Devt and Curriculum	\$6,737	\$13,157
M.A. in Child Study	\$6,737	\$13,157
M.A.(T.)	\$6,737	\$13,157
M.Ed.	\$6,737	\$13,157
Ed.D.	\$6,364	\$13,038
PHARMACY		
Bachelors	\$9,840	\$17,682
PharmD	\$25,350	\$25,350
PHYSICAL EDUCATION AND HEALTH		
B.P.E.H	\$4,185	\$12,026

TUITION FEE SCHEDULE FOR DOMESTIC AND INTERNATIONAL STUDENTS (continued)
 2003-2004

	DOMESTIC STUDENTS 2003 Entering Cohort	INTERNATIONAL STUDENTS 2003 Entering Cohort
S.G.S. (annual fee)		
Doctoral Stream	\$5,442	\$9,242
S.G.S. CENTERS AND INSTITUTES		
M.I.R.	\$6,737	\$13,157
M.M.St.	\$6,737	\$13,157
SOCIAL WORK		
M.S.W.	\$6,136	\$12,556
TRANSITIONAL YEAR PROGRAM		
Regular	\$3,557	na
Extended	\$1,779	na
WOODSWORTH		
Woodsworth Certificates	\$4,185	\$10,739
Diploma in Gerontology	\$6,737	\$13,157

TUITION FEE SCHEDULE FOR SELF-FUNDED PROGRAMS
2003-2004

	2003 ENTERING COHORT
Masters of Engineering in Telecommunications	\$25,000
Masters of Engineering in Design & Manufacturing Course Fee	\$2,500
Certificate Program in Professional and Aviation Management	\$18,000
Summer Program in Medieval Latin	
Domestic	\$650
International	\$500.00 (U.S.)
Masters of Mathematical Finance	\$30,000
Master of Management and Professional Accounting	
Domestic	\$19,000
International	\$21,000
Executive Masters of Business Administration	\$70,000
Executive Masters of Business Administration (Global Option)	\$30,000
Diploma in Forensic Accounting	\$6,500
Faculty of Dentistry Qualifying Program	\$34,730
Sponsored Medical Trainees	\$24,297
Visiting MD Student Course Fee	
1-2 weeks	\$220
3-4 weeks	\$290
5-6 weeks	\$360
7-8 weeks	\$432
Nurse Practitioner Certificate Course Fee	\$838
OISE/UT- Additional Qualifications Course	\$865
OISE/UT - Diploma in Holocaust/Genocide Studies Course Fee	\$1,011

TUITION FEE SCHEDULE FOR OISE/UT SCHOOLS
2003-2004

	2003-04
Laboratory School - Half Day Program	\$4,601
Laboratory School - Full Day Program	\$7,169
U T S	\$10,490

Blank page

Part E

Graduates

Graduates by Region	52
Number of Degrees Awarded by College or Faculty Affiliation	53
Overall Fundraising Achievement	54
Overall Fundraising Achievement: Source of Donations	55

GRADUATES BY REGION

2003

	LIVING	PERCENTAGE OF LIVING	TOTAL*
Canada			
Ontario			
Metro Toronto	176,246	44.5%	189,411
Central Ontario	101,733	25.7%	107,831
Southwestern Ontario	21,433	5.4%	25,221
Eastern Ontario	20,289	5.1%	23,442
Northern Ontario	7,677	1.9%	8,746
Rest of Canada			
British Columbia	10,186	2.6%	11,541
Alberta	5,799	1.5%	6,259
Unknown within Canada	4,555	1.1%	32,181
Quebec	4,733	1.2%	5,327
Nova Scotia	2,186	0.6%	2,452
Manitoba	1,861	0.5%	2,156
Saskatchewan	1,365	0.3%	1,621
New Brunswick	1,040	0.3%	1,168
Newfoundland	934	0.2%	1,008
Northwest Territories	260	0.1%	291
Prince Edward Island	282	0.1%	320
Yukon Territory	102	-	106
Nunavut	24	-	24
Canada Total	360,705	91.0%	419,105
United States Total	20,397	5.1%	23,904
International Total	15,340	3.9%	16,527
Unknown	26	-	32
Grand Total	396,468	100.0%	459,568

*Total includes living graduates and deceased graduates, and is included to give a historical context of the total number of individuals who graduated from the University of Toronto.

Notes: Unique Number of graduates (living and deceased) is 459,568

Regional Breakdown is based on data as at August 23, 2003

**NUMBER OF DEGREES AWARDED
BY COLLEGE OR FACULTY AFFILIATION
2003**

	NUMBER OF DEGREES AWARDED	PERCENTAGE OF TOTAL
Arts & Science Programs		
Constituent Colleges:		
University College	43,754	8.3%
New College	15,840	3.0%
Innis College	6,483	1.2%
Woodsworth College	16,163	3.1%
Total Constituent Colleges	82,240	15.6%
Federated Colleges:		
St. Michael's College	27,757	5.3%
Victoria College	36,945	7.0%
Trinity College	16,934	3.2%
Total Federated Colleges	81,636	15.4%
University of Toronto at Mississauga	27,549	5.2%
University of Toronto at Scarborough	25,583	4.8%
Total Arts & Science Programs	217,008	41.1%
Applied Science & Engineering	43,069	8.1%
Architecture, Landscape & Design	3,261	0.6%
Dentistry	10,448	2.0%
Forestry	2,726	0.5%
Graduate Studies/Graduate Institutes & Centres	88,941	16.8%
Information Studies	5,573	1.1%
Joseph L. Rotman School of Management	8,642	1.6%
Law	7,090	1.3%
Medicine, Doctor of	14,113	2.7%
Other Medicine	13,383	2.5%
Music	4,622	0.9%
Nursing	9,624	1.8%
OISE/UT:		
Undergraduate	43,223	8.2%
Graduate	21,177	4.0%
Institute of Child Study	2,040	0.4%
Pharmacy	10,073	1.9%
Physical & Occupational Therapy	6,379	1.2%
Physical Education & Health	4,560	0.9%
Social Work	7,004	1.3%
Woodsworth Certificate & Diploma	5,654	1.1%
Total	528,610	100.0%

Notes:

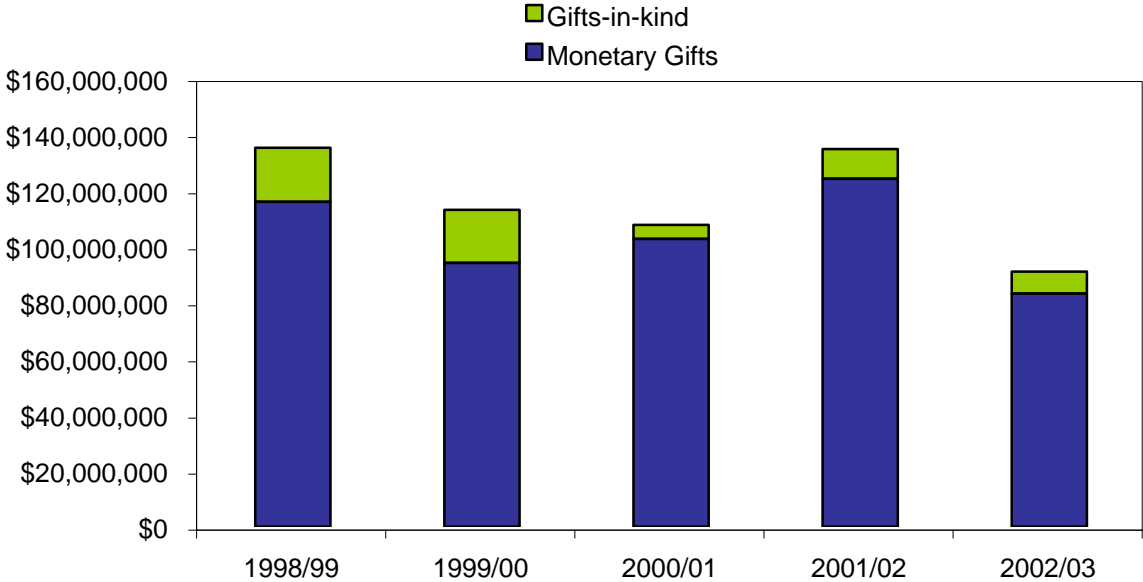
All honorary degrees are excluded

A single degree may be counted in more than one constituency.

Does not include Toronto School of Theology.

OVERALL FUNDRAISING ACHIEVEMENT

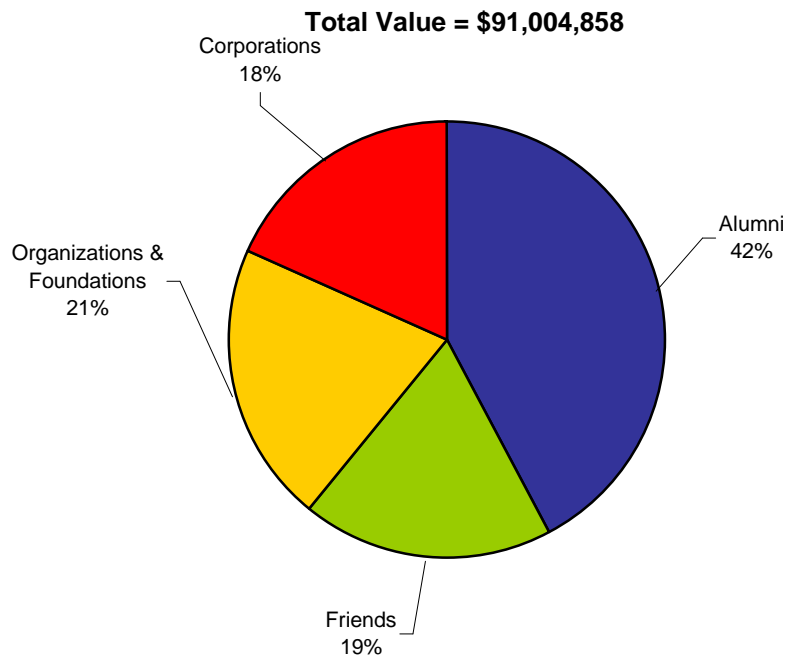
1998-1999 to 2002-2003



Notes: Monetary gifts are based on actual payments received.
The above donations include those received by the University of Toronto and those received by the University of St. Michael's College, University of Trinity College and Victoria University.

OVERALL FUNDRAISING ACHIEVEMENT
SOURCE OF DONATIONS

May 1, 2002 - April 30, 2003



Note: Figures are based on payments received by the University of Toronto, the University of St. Michael's College, University of Trinity College and Victoria University.

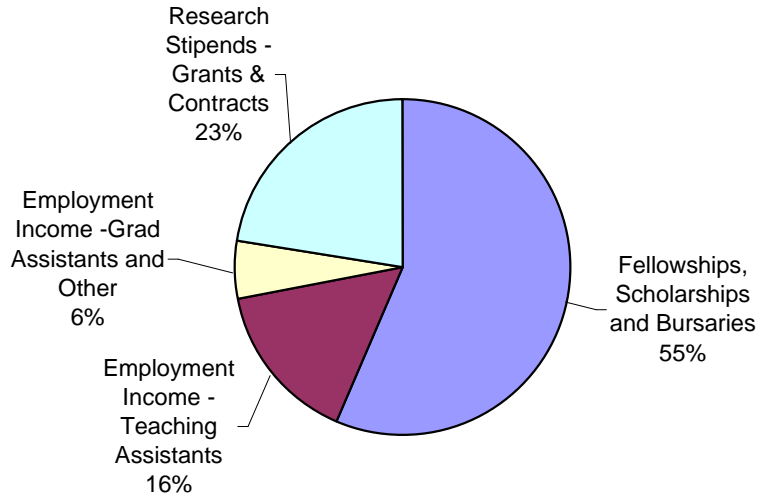
Blank page

Part F Student Awards

Graduate Student Support by Source	58
Graduate Student Support by S.G.S. Division	58
Undergraduate Student Support : Admission Scholarships, In-Course Scholarships and Bursaries by Faculty and College	59
OSAP and University of Toronto Advanced Planning for Students program (UTAPS) by Faculty and College	60

GRADUATE STUDENT SUPPORT BY SOURCE
2002-2003

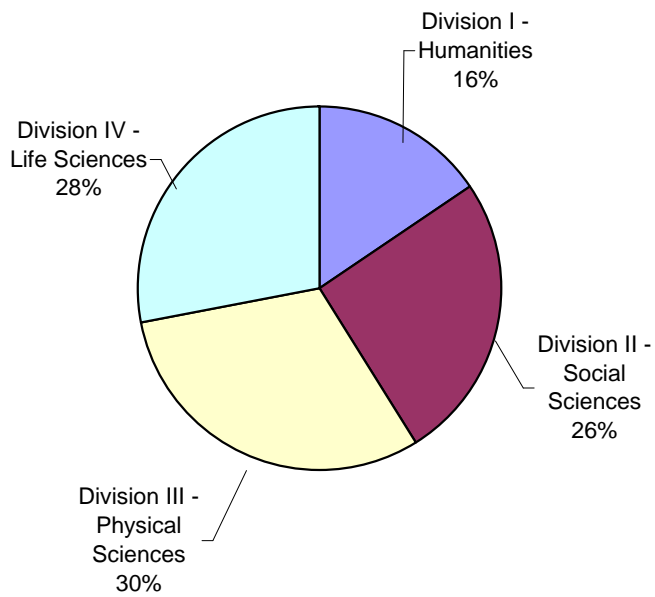
Total \$126,471,281*



*Does not include updated information on research stipends from affiliated teaching hospitals.

GRADUATE STUDENT SUPPORT BY SCHOOL OF GRADUATE STUDIES DIVISION
2002-2003

Total \$126,471,281*



*Does not include updated information on research stipends from affiliated teaching hospitals.

**UNDERGRADUATE STUDENT SUPPORT:
ADMISSION SCHOLARSHIPS, IN-COURSE SCHOLARSHIPS AND BURSARIES**
2002-2003

FACULTY / COLLEGE	ADMISSION SCHOLARSHIPS		IN-COURSE SCHOLARSHIPS		BURSARIES	
	Number	Value	Number	Value	Number	Value
Applied Science and Engineering	334	1,042,762	202	496,763	1,642	3,941,694
Dentistry	0	0	64	44,985	240	767,186
Innis College	59	136,600	165	187,107	350	533,584
Law	20	67,703	110	61,039	799	1,715,438
Medicine	2	631	270	181,529	931	1,848,271
Mississauga, University of Toronto at	196	257,471	143	131,377	933	1,315,176
Music	27	51,506	117	158,280	195	365,225
New College	84	209,411	115	131,284	724	1,433,766
Nursing	3	5,338	18	16,109	165	468,557
OISE/UT Undergraduate	10	29,615	22	38,660	395	1,219,107
Pharmacy	17	12,715	92	58,605	623	1,165,965
Physical Education and Health	6	18,500	30	13,289	87	89,145
Physical Therapy	0	0	2	750	42	66,662
Radiation Sciences	0	0	2	3,000	101	273,781
Scarborough, University of Toronto at	159	322,568	215	204,807	1,259	2,244,010
St. Michael's College	85	160,750	141	181,850	521	834,355
Transitional Year Program	0	0	33	7,405	169	502,361
Trinity College	161	341,213	127	150,988	224	509,020
University College	216	368,658	820	681,355	950	2,008,419
Victoria College	175	494,245	441	664,533	649	1,020,726
Woodsworth College	58	54,100	120	87,181	1,466	2,720,717
Total	1,612	\$3,573,784	3,249	\$3,500,893	12,465	\$25,043,168

OSAP AND UTAPS BY FACULTY AND COLLEGE

2002-2003

FACULTY / COLLEGE	OSAP APPLICANTS AS A PERCENTAGE OF FULL-TIME ENROLMENT		OSAP		UTAPS	
			Number	Value	Number	Value
Applied Science and Engineering	41%		1,250	7,597,324	1,140	2,625,162
Dentistry	68%		185	1,747,769	179	675,046
Innis College	33%		333	2,287,535	99	186,700
Law	39%		192	1,371,724		
Management	27%		112	870,317		
Medicine	73%		501	4,897,909	421	1,286,846
Mississauga, University of Toronto at	44%		1,788	11,246,377	404	763,200
Music	33%		105	770,057	39	121,050
New College	45%		1,079	7,206,530	250	544,550
Nursing	50%		83	1,013,169	48	205,300
OISE/UT Graduate	22%		233	2,296,139	148	544,955
OISE/UT Undergraduate	39%		403	3,817,642	167	497,050
Pharmacy	60%		320	2,217,606	299	678,298
Physical Education and Health	31%		89	565,339	16	25,750
Physical Therapy	41%		24	230,500	15	31,400

OSAP AND UTAPS BY FACULTY AND COLLEGE (continued)
2002-2003

FACULTY / COLLEGE	OSAP APPLICANTS AS A PERCENTAGE OF FULL-TIME ENROLMENT	OSAP		UTAPS	
		Number	Value	Number	Value
Radiation Sciences	34%	105	1,022,726	58	182,550
Scarborough, University of Toronto at	53%	2,227	14,082,432	544	1,137,750
School of Graduate Studies	14%	787	7,105,583	592	1,770,278
St. Michael's College	34%	862	5,390,027	141	275,100
Transitional Year Program	93%	62	638,697	41	176,250
Trinity College	29%	266	1,756,579	77	187,250
University College	37%	971	6,617,912	238	506,900
Victoria College	37%	923	6,156,102	203	371,000
Woodsworth College	70%	1,281	9,908,376	321	794,515
Total	38%	14,181	\$100,814,371	5,440	\$13,586,900

Notes: UTAPS for School of Graduate Studies are also included in the totals shown in Graduate Student Support by Graduate Studies Division

UTAPS at Law and Management is distributed as part of their grants programs and are not included above.

UTAPS data in this table refer to grants awarded to OSAP recipients only.

Residency and Post-Graduate Medicine are excluded.

Blank page

Part G

Faculty and Administrative Staff

Distribution of Full-Time Appointed Tenured/Tenure Stream Faculty by Major Division and Main Appointment	64
Distribution of Full-Time Tenured/Tenure Stream Faculty by Rank and Gender	65
Age Distribution of Tenured/Tenure Stream Faculty	65
Distribution of Full and Part Time ($\geq 25\%$) Academic Staff and Librarians by Rank and Gender	66
Distribution of Full Time and Part Time Administrative and Union Staff	68
Operating Fund Full-Time Equivalent Staff	69

**DISTRIBUTION OF FULL-TIME APPOINTED TENURED/TENURE
STREAM FACULTY BY MAJOR DIVISION AND MAIN APPOINTMENT**

All Sources of Funding
October 2002

DIVISION			%	TOTAL
	MALE	FEMALE	FEMALE	
Applied Science and Engineering	177	12	6.3%	189
Architecture, Landscape, and Design	11	1	8.3%	12
Arts and Science*	490	160	24.6%	650
Dentistry	37	6	14.0%	43
Education (OISE/UT)	66	83	55.7%	149
Forestry	11	3	21.4%	14
Information Studies	5	9	64.3%	14
Law	31	17	35.4%	48
Management	57	9	13.6%	66
Medicine	128	58	31.2%	186
Mississauga, University of Toronto at	111	42	27.5%	153
Music	19	8	29.6%	27
Nursing	1	21	95.5%	22
Pharmacy	14	9	39.1%	23
Physical Education and Health	9	5	35.7%	14
Scarborough, University of Toronto at	104	42	28.8%	146
School of Graduate Studies	10	5	33.3%	15
Social Work	7	12	63.2%	19
Total	1,288	502	28.0%	1,790

* Includes University College, Innis College, New College, Woodsworth College, Trinity, Victoria, St. Michael's College.

**DISTRIBUTION OF FULL-TIME TENURED/TENURE STREAM FACULTY
BY RANK AND GENDER**

All Sources of Funding
October 2002

RANK	MALE	FEMALE	% FEMALE	TOTAL
Professor	724	159	18.0%	883
Associate Professor	353	210	37.3%	563
Assistant Professor	202	131	39.3%	333
Assistant Professor (conditional)	9	2	18.2%	11
Total	1,288	502	28.0%	1,790

Note: Includes Faculties of Medicine and Dentistry.

AGE DISTRIBUTION OF TENURED/TENURE STREAM FACULTY

October 2002

RANK	AVERAGE AGE
Professor	54.6
Associate Professor	47.4
Assistant Professor	36.7
Assistant Professor (conditional)	33.4

Note: Total number of Faculty = 1,790

DISTRIBUTION OF FULL AND PART-TIME (>=25%) ACADEMIC STAFF AND LIBRARIANS BY RANK AND GENDER

All Sources of Funding
October 2002

RANK	FULL-TIME			Total
	Male	Female	%	
Professor	869	183	17.4%	1,052
Associate Professor	486	254	34.3%	740
Assistant Professor	298	211	41.5%	509
Assistant Professor (cond)	9	2	18.2%	11
Lecturer (medical)	5	10	66.7%	15
Instructor	10	22	68.8%	32
Senior Lecturer/Lecturer	81	98	54.7%	179
Senior Tutor/Tutor	32	39	54.9%	71
Sub-Total	1,790	819	31.4%	2,609
Librarian	34	95	73.6%	129
Total	1,824	914	33.4%	2,738

RANK	PART-TIME			Total
	Male	Female	%	
Professor	42	10	19.2%	52
Associate Professor	49	15	23.4%	64
Assistant Professor	46	37	44.6%	83
Assistant Professor (cond)	0	0		0
Lecturer (medical)	7	10	58.8%	17
Instructor	0	8	100.0%	8
Senior Lecturer/Lecturer	55	65	54.2%	120
Senior Tutor/Tutor	16	9	36.0%	25
Sub-Total	215	154	41.7%	369
Librarian	3	15	83.3%	18
Total	218	169	43.7%	387

DISTRIBUTION OF FULL AND PART-TIME (>=25%) ACADEMIC STAFF AND LIBRARIANS BY RANK AND GENDER Continued

All Sources of Funding
October 2002

RANK	TOTAL			Total
	Male	Female	%	
Professor	911	193	17.5%	1,104
Associate Professor	535	269	33.5%	804
Assistant Professor	344	248	41.9%	592
Assistant Professor (cond)	9	2	18.2%	11
Lecturer (medical)	12	20	62.5%	32
Instructor	10	30	75.0%	40
Senior Lecturer/Lecturer	136	163	54.5%	299
Senior Tutor/Tutor	48	48	50.0%	96
Sub-Total	2,005	973	32.7%	2,978
Librarian	37	110	74.8%	147
Total	2,042	1,083	34.7%	3,125

Notes: Includes Faculty of Medicine and Dentistry.

Includes both tenured/tenure stream and non-tenure stream professorial staff.

DISTRIBUTION OF FULL-TIME AND PART-TIME ADMINISTRATIVE AND UNION STAFF

September 2002

EMPLOYEE GROUP	FULL-TIME			PART-TIME			ALL		
	Male	Female	Total	Male	Female	Total	Male	Female	Total
Non-Unionized Employees									
ESL Instructor	13	18	31	0	5	5	13	23	36
Research Associate	106	62	168	11	8	19	117	70	187
Senior Management Group*	59	66	125	0	3	3	59	69	128
USWA-exempt Admin staff*	216	344	560	4	34	38	220	378	598
Total non-unionized employees	394	490	884	15	50	65	409	540	949
Unionized Employees									
Library	57	123	180	10	13	23	67	136	203
Operating Engineers	71	1	72	0	0	0	71	1	72
Police	28	12	40	0	0	0	28	12	40
Research Associates & Officers OISE/UT	6	14	20	0	0	0	6	14	20
Service Workers	299	219	518	11	5	16	310	224	534
Teaching Assistants**	0	0	0	1,562	1,364	2,926	1,562	1,364	2,926
Trades and Services***	60	1	61	0	0	0	60	1	61
USWA Admin staff*	810	1876	2,686	47	224	271	857	2100	2,957
Total unionized employees	1,331	2,246	3,577	1,630	1,606	3,236	2,961	3,852	6,813
Total	1,725	2,736	4,461	1,645	1,656	3,301	3,370	4,392	7,762

* Excludes Non University of Toronto Departments.

** Includes 188 OISE Graduate Assistants

*** Trades and Services includes Machinists, Carpenters, Electrical Workers, Sheet Metal Workers, Plumbers, Pipefitters, and Painters.

OPERATING FUND FULL-TIME EQUIVALENT STAFF

2003-04

DIVISION	ACADEMIC	ADMINISTRATIVE
Applied Science and Engineering	220.74	187.21
Architecture, Landscape, and Design	24.12	20.30
Arts & Science	862.14	428.31
Colleges	14.43	103.78
Dentistry	84.19	149.31
Forestry	15.10	7.00
Graduate Centres and Institutes	23.74	31.23
Information Studies	14.50	18.90
Law	49.40	57.30
Management	84.31	101.11
Medicine	759.89	353.59
Mississauga, University of Toronto at	214.93	80.08
Music	49.26	27.83
Nursing	37.45	22.30
OISE/UT	244.40	178.84
Pharmacy	37.23	23.10
Physical Education and Health	16.29	9.50
Scarborough, University of Toronto at	219.70	66.88
School of Continuing Studies	37.95	44.00
School of Graduate Studies	5.55	41.80
Social Work	22.75	17.60
Transitional Year Program	10.29	2.50
Subtotal	3,048.36	1,972.47
Academic Services	4.00	562.97
Campus and Student Services	10.93	250.79
Central Administration	15.77	743.68
Facilities and Services	0.00	652.73
Other Academic Costs	1.79	0.00
Grand Total	3,080.85	4,182.64

Notes:

Union staff are included in the Administrative group.

Arts and Science includes Innis, New, St. Michael's, University College Programs.

Colleges include Innis, Munk Centre, New, University, Woodsworth

Blank page

Part H Library

Library Collections	72
Number of Loans	73
Number of Computers in the Library	73
Digital Library E-Resources	73
Number of Electronic Articles Downloaded	74

LIBRARY COLLECTIONS

2002-2003

There are 31 libraries in the University of Toronto Library System.

COLLECTIONS *	CENTRAL LIBRARIES	LOCAL LIBRARIES	SCARBOROUGH/ MISSISSAUGA	FEDERATED/ AFFILIATED	DIGITAL LIBRARY**	TOTAL
Books	6,940,778	997,271	603,406	1,214,249	25,636	9,781,340
Cartographic Materials	238,858	8	38,350	327		277,543
CD-ROM (Bibliog & Text)	2,559	405	146	449		3,559
Computer Data Files	3,090	279	0	11		3,380
Films & Videos	23,003	1,625	408	1,090		26,126
Graphic Materials	205,917	370,910	63,355	70,895		711,077
Microforms	4,882,480	131,107	37,561	125,913		5,177,061
Music Scores		64,127	803			64,930
Sound Recording	10,037	174,735	3,936	2,441		191,149
Other Formats	26,168	23,612	276	513		50,569
Total	12,332,890	1,764,079	748,241	1,415,888	25,636	16,286,734
Current Serials	21,931	6,294	3,439	3,076	21,321	56,061
Manuscripts (Metres)	10,479	7	0	101		10,587

* Materials on transfer from Central to Local Libraries (previously included in Central Libraries' counts) are shown in the counts for Local Libraries where they are located. Bound volumes of subscriptions are included in the Book counts.

** Electronic resources (Books & journals).

NUMBER OF LOANS

2002-2003

Central Libraries	
Robarts Library	1,851,885
Gerstein Science Information Centre	528,600
OISE/UT Library	259,952
Fisher Library/Archives	21,248
Audio Visual Library	71,616
Branch Libraries	228,233
Sub-Total	2,961,534
Local Libraries	
UTMississauga Library	452,063
UTScarborough Library	193,932
Federated/Affiliated Libraries*	34,624
	545,017
Total	4,187,170

Note: Construction/Renovation during 02/03 affected activity levels in Gerstein, UTSC and ROM Libraries

NUMBER OF COMPUTERS IN THE LIBRARY

April 30, 2003

Computers in the Network	1,799
Stand-Alone PC's	43
Terminals	17

DIGITAL LIBRARY E-RESOURCES

May 14, 2003

	LICENSED*	PUBLIC**	TOTAL
Journals Indexes and Abstracts	398	43	441
Journals	18,572	1,849	20,421
Reference Sources	402	79	481
Books	18,348	6,807	25,155
Newspapers and News Services	415	44	459
Total	38,135	8,822	46,957

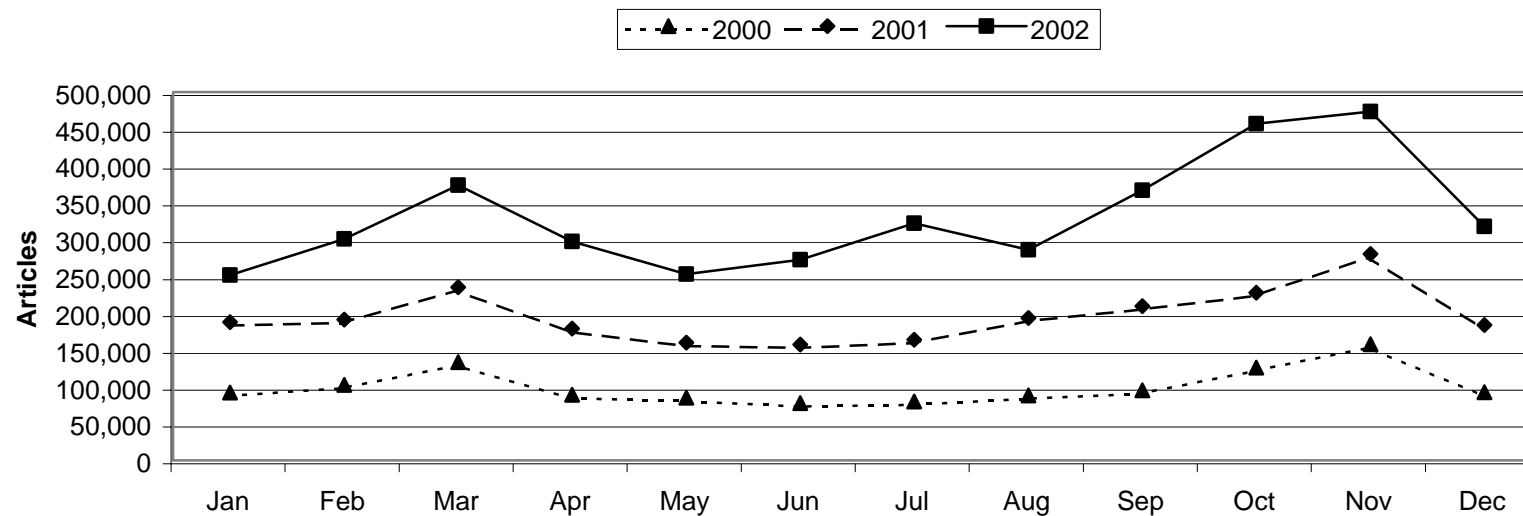
* These items have been licensed for use by the University of Toronto community.

** These items are available on the Internet for use by anyone.

For current figures, see <http://link.library.utoronto.ca/eir/EIRsummary.cfm>

NUMBER OF ELECTRONIC ARTICLES DOWNLOADED

2000-2002



Notes:

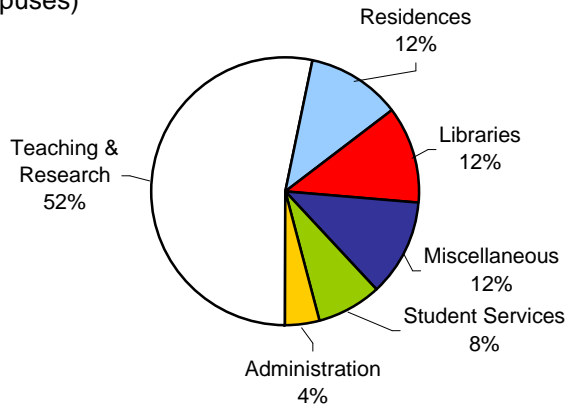
1. The data for 2000 includes the following publishers, aggregators and systems not previously available:
Academic Press, Beilstein, Cell Press, Elsevier Science, Harrison's Online, JSTOR, LION, MCB Press, Project MUSE, ProQuest, Pubns of the Natl Acad of Sciences, Science, SIAM, Wiley
2. The data for 2001 includes the following publishers, aggregators and systems not previously available:
Highwire Press, Nature, Blackwell/Synergy
3. The data for 2002 includes the following publishers, aggregators and systems not previously available:
Am Jnl of Physics, BioMed Central, CIAO, IEEE, JBC, Neuroscience, Oxford Univ Press

Part I Physical Plant

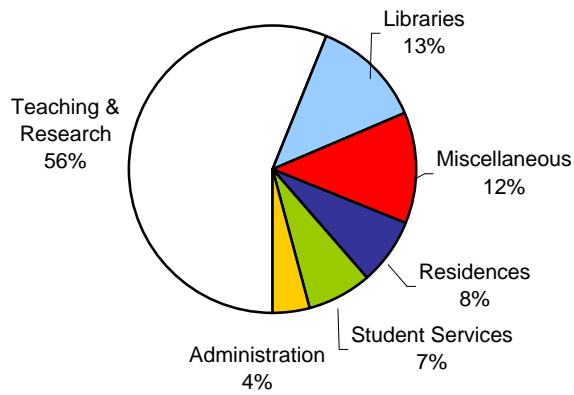
Usage of Assignable Space	76
Physical Facts :	
a) Area of U of T Properties	78
b) Number of Parking Spaces	78
c) Number of Buildings and Gross Square Metres	79
d) Public Assembly Facilities	80
e) Number of Places in Student Residences	80

USAGE OF ASSIGNABLE SPACE
2002-2003

University of Toronto
(All Campuses)



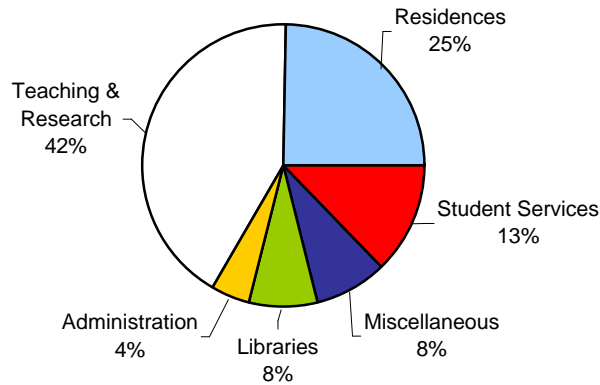
St. George Campus



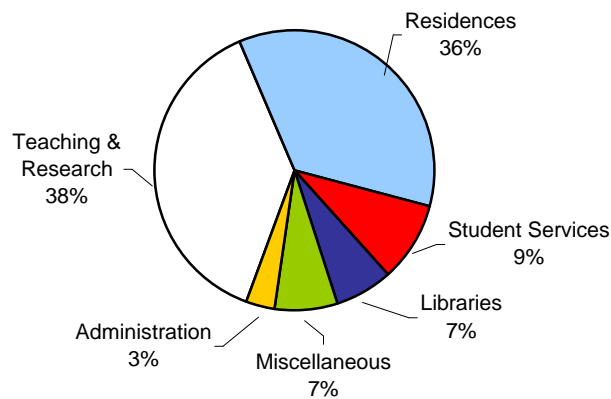
Note: Student Services includes: Athletics, Food Services, Bookstore and Merchandising and Health Services.
Miscellaneous includes: Plant Maintenance, Assembly & Exhibition Facilities, Common Use and Student Activity and Other University Facilities.

USAGE OF ASSIGNABLE SPACE (continued)
2002-2003

Scarborough Campus



Mississauga Campus



Note: Teaching and Research includes: Classrooms, Teaching and Research Laboratories, Academic Services, Health Science Clinic Facilities, Central Services and Media Services.

PHYSICAL FACTS

2002-2003

AREA OF U OF T PROPERTIES

	HECTARES
CAMPUSES	
Downtown Campus	
St. George	51.3
Federated Colleges and Massey	17.3
Total Downtown Campus	68.6
Scarborough	121.5
Mississauga	90.2
Total Campuses	280.3
OFF CAMPUS	
David Dunlap Observatory	76.9
Aerospace	11.9
Joker's Hill	346.0
Total Off Campus	434.8
Grand Total	715.1

Note: Excludes Glendon and Huron/Sussex.
Total Downtown Campus includes St. George,
Federated Colleges and Massey.

NUMBER OF PARKING SPACES

2002-2003

	NUMBER OF SPACES
St. George	2,100
Scarborough	1,908
Mississauga	2,500
Total	6,508

NUMBER OF BUILDINGS AND GROSS SQUARE METRES

2002-2003

BUILDING GROSS SQUARE METRES	NUMBER OF BUILDINGS	NET ASSIGNABLE SQUARE METRES	NET SQUARE METRES	GROSS SQUARE METRES
University				
St. George	109	516,133	835,278	975,225
Leased St. George	8	4,937	6,483	7,438
Scarborough	30	44,406	67,291	78,793
Mississauga	43	62,802	95,356	108,009
Total University	190	628,278	1,004,408	1,169,465
Federated Colleges and Massey	53	100,426	150,422	189,205
Grand Total	243	728,704	1,154,830	1,358,670

Note: **Net Assignable Square Metres** is the sum of all areas on all floors of the building assigned to, or available for assignment to, an occupant, including every type of space functionality used by an occupant.
Net Square Metres is the sum of all areas on all floors of the building, both assigned (see definition above) and non-assigned (ie corridors, stairs, mechanical rooms etc.).
Gross Area Square Metres is the sum of all floors areas included within the outside faces of exterior walls, which have floor surfaces.

NUMBER OF PUBLIC ASSEMBLY FACILITIES

2002-2003

	NUMBER OF FACILITIES	SEATING CAPACITY
St. George Lecture Theatres / Hall*	44	10,337
St. George Auditorium	4	3,400
Dining Rooms and Cafeterias*	34	4,393
Varsity Arena	1	4,200

* Including Federated Colleges.

NUMBER OF UNIVERSITY OF TORONTO STUDENTS IN RESIDENCE

2002-2003

	NUMBER OF FIRST-YEAR STUDENTS	NUMBER OF STUDENTS	TOTAL SPACES
University of Toronto Residences			
St. George Including Federated Universities			
Primrose Hotel - Woodsworth College	350	382	391
Charles Street Apartments***	0	756	710
Graduate House	1	433	433
Innis College	195	326	327
New College	387	646	650
St. Michael's College	449	826	844
Trinity College	215	432	435
University College (Incl. Luker House)	348	535	535
Victoria University	396	747	758
Total St. George	2,341	5,083	5,083
University of Toronto at Mississauga			
Graduate & Family Housing**	0	294	294
Undergraduate Housing	404	592	592
Total U of T at Mississauga	404	886	886
University of Toronto at Scarborough	321	536	536
Total University of Toronto residences	3,066	6,505	6,505
Independent Campus Residences			
Campus Co-Op	0	217	306
Knox College	1	98	104
Massey College	0	60	60
Neil-Wycik Co-Operative*	0	45	780
St. Vladimir Institute	12	37	47
Tartu College	135	403	453
Wycliffe College	0	65	70
Total Independent Residences	148	925	1,820
Grand Total	3,214	7,430	8,325

* Premises house mainly Ryerson students.

** Premises house students and their family. Some families may include 2 students.

Notes: As of the beginning of the academic year.

Includes TST students.

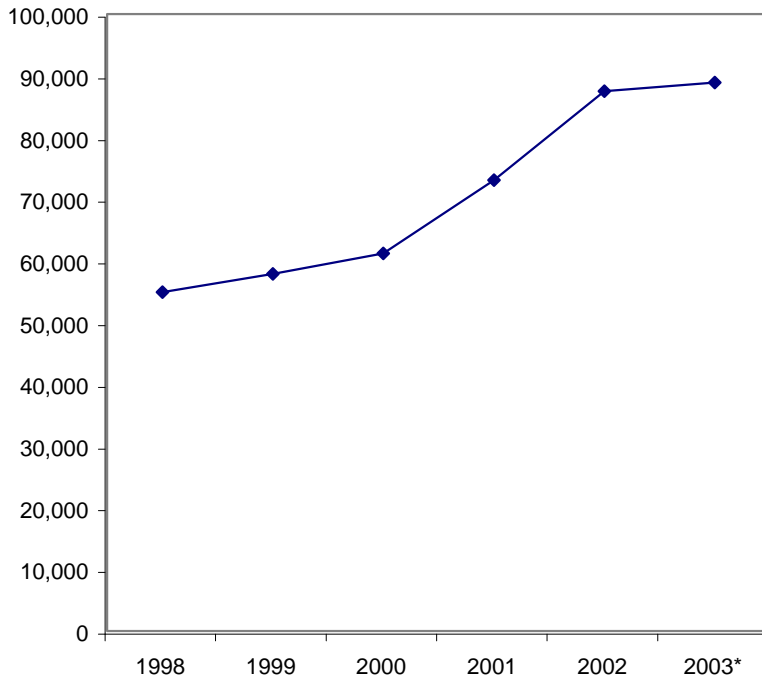
Part J

Computing and Communications

Number of UTORmail accounts at Year End	82
Messages Delivered by UTORmail Post Office	82
Number of Web Transactions	83
Institutional Internet Dial-in Service	84
Dial-in Modem	
U of T/Bell Sympatico High Speed Edition (HSE)	
Campus Wireless Network	84
Usage of Electronic Student Services	85

NUMBER OF UTORmail ACCOUNTS AT YEAR END

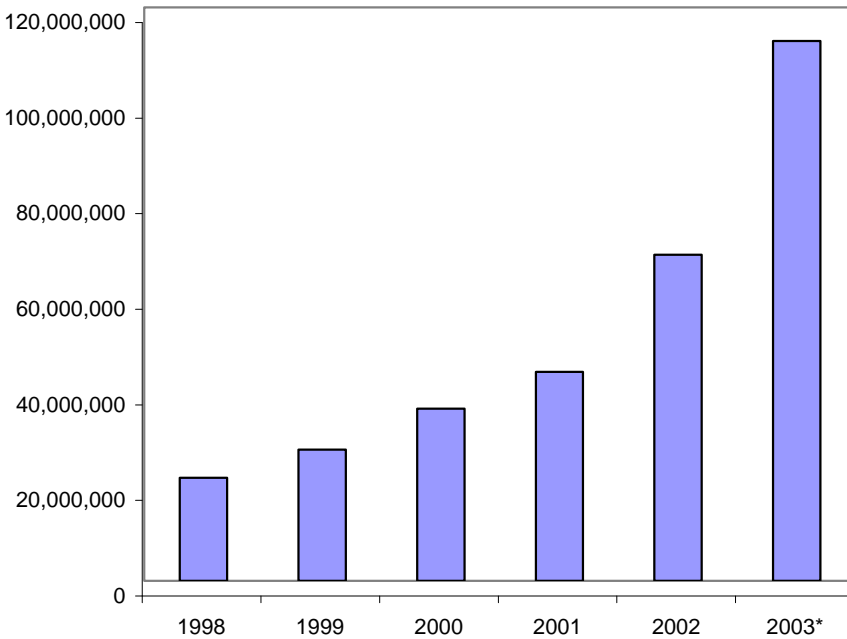
1998-2003



*Note: 2003 figures represent the number of UTORmail accounts up to September 30, 2003. 1998-2002 figures are from Jan. 1 to Dec. 31.

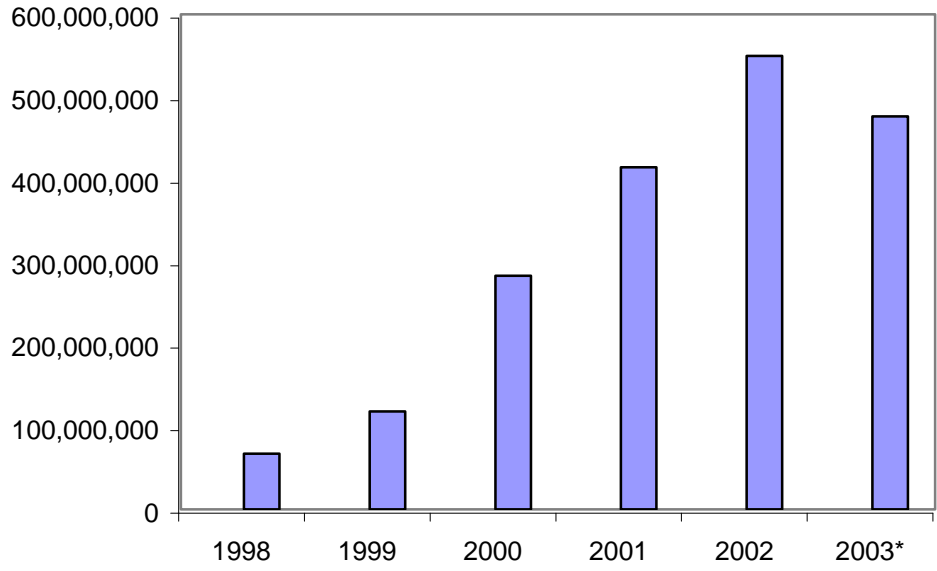
NUMBER OF MESSAGES DELIVERED BY UTORmail POST OFFICE

1998-2003



*Note: 2003 figures represent the number of UTORmail accounts up to September 30, 2003. 1998-2002 figures are from Jan. 1 to Dec. 31.

NUMBER OF WEB TRANSACTIONS
For the institutional server www.utoronto.ca
1998-2003



*Note: 2003 figures represent the number of UTORmail accounts up to September 30, 2003. 1998-2002 figures are from Jan. 1 to Dec. 31.

INSTITUTIONAL INTERNET DIAL-IN SERVICES

1998-2003

Dial-in modem

Up to 56,000 bits per second

Date	Phone Lines	Active Users	Calls per Week
November 1998	512	14,500	116,000
November 1999	632	15,300	134,000
November 2000	663	12,500	113,000
November 2001	597	9,900	92,000
November 2002	413	7,300	68,000
October 2003*	333	5,600	52,000

*2003 figures represent the dial-in usage from Oct. 2002 to the first week of October. 1998-2002 figures represent dial-in usage from Dec. 1 to November 30.

U of T/Bell Sympatico

High Speed Edition (HSE)*

Up to 960,000 bits per second

Date	Active Users	Using UofT Network Address
November 1999	0	0
November 2000	1,159	237
November 2001	1,744	419
November 2002	1,387**	624
October 2003***		468

*Service first became available in November, 1999.

**Due to a change in promotion this past year, some UofT users may be subscribing through a different offering, not included in this number.

***2003 figures represent the dial-in usage from Oct. 2002 to the first week of October. 1998-2002 figures represent dial-in usage from Dec. 1 to November 30.

CAMPUS WIRELESS NETWORK*

2000-2003

Date	Buildings	Access Points	Sessions per Week
November 2000	0	0	0
November 2001	8	56	500
November 2002	15	118	4,500
October 2003**	19	143	9,800

*Service first became available in September 2001.

**2003 figures represent the dial-in usage from Oct. 2002 to the first week of October. 1998-2002 figures represent dial-in usage from Dec. 1 to November 30.

USAGE OF ELECTRONIC STUDENT SERVICES

September 1, 2002-August 31, 2003

ACTIVITY	ROSI STUDENT WEB SERVICES rosi.utoronto.ca
Accessing the System	
Access suspended	15,514
Change PIN	53,565
Login successfully	4,157,678
Unsuccessful attempt to change PIN	3,054
Unsuccessful attempt to login	152,269
Setup for PIN Reactivation	79,342
PIN Reactivated Successfully	7,346
Unsuccessful attempt to Reactivate PIN	1,960
Maintaining Personal Information	
Add new address	6,395
Add new contact information	4,235
Add new telephone number	3,914
Change address	47,056
Change contact information	2,475
Change e-mail address	24,676
Change telephone number	5,740
Choosing/Changing Academic Options	
Accept Subject POST	7,622
Add new Subject POST	44,609
Add academic activity	527,095
Cancel invited registration	215
Change Subject POST	6,563
Confirm graduation request	6,989
Delete Subject POST	26,334
Cancel registration/Deregister	5,079
Drop academic activity	223,987
List courses	2,006,427
Modify academic activity	208,819
Requesting/Paying for Transcripts	
Request transcript, add charges to student account	9,297
Request transcript, pay by credit card	19,343
Request transcript pending payment	28,739
Create electronic transcript invoice	23,969
Pay electronic transcript invoice	19,343
Unsuccessful electronic payment	2,322
Participating in Campus Life	
Opt out of SAC Health Insurance	25,314
Submit an electronic vote	44,398

Notes

**Prepared by
The Office of the Vice-Provost, Planning and Budget
University of Toronto**

**Printed in Canada
by University of Toronto Press
2003**