

**UNIVERSITY
OF TORONTO**



2006

Facts & Figures

Facts and Figures is prepared annually by the Office of the Vice-Provost, Planning and Budget. **Facts and Figures** provides answers to some of the most frequently asked questions about the University. It is designed and organized to serve as a useful and reliable source of reference information from year to year.

The reader of **Facts and Figures** should take care when attempting to use the enclosed information comparatively. While some definitions are common to other universities, many others are not. Our Office maintains some comparative databases and has access to others. Please contact us for assistance in using **Facts and Figures** comparatively.

Each year we try to improve **Facts and Figures** to make it as useful as possible. We are always grateful for suggestions for improvement.

Facts and Figures can also be accessed on the World Wide Web at <http://www.utoronto.ca/aboutuoft/quickfacts/factsandfigures.htm>

Other Official Publications of the University:

- **Performance Indicators for Governance Report**

(<http://www.provost.utoronto.ca/English/Performance-Indicators-for-Governance.html>)

- **Report from U of T**

(<http://www.president.utoronto.ca/reportuoft.htm>)

- **University of Toronto Condensed Financial Report**

(<http://www.finance.utoronto.ca/Page799.aspx>)

Corinne Pask-Aubé and Xuelun Liang were the co-managers of **Facts and Figures** for 2006. They deserve our gratitude for their efforts. Corinne can be reached through e-mail at corinne.pask@utoronto.ca.

We would also like to thank the contributors for their help in collecting data for each of the sections: Brian Armstrong, Nicole Becker, Michelle Broderick, Mary Ellen Caskenette, Hung Sun Chan, Helen Choy, Tony Di Felice, Brian Dowling, Aytan Farrokhyar, Phil Harper, Rick Haywood, Lari Langford, Helen Lasthiotakis, Maureen Lynham, Judy McKenna, Barry Murphy, Alex Nishri, José Sigouin, and George Taylor .

Safwat Zaky

Vice-Provost, Planning and Budget

Room 240, Simcoe Hall
27 King's College Circle
Toronto, Ontario
M5S 1A1
www.utoronto.ca/planning

CONTENTS

Part A	General	3
	1. Organization of Senior Administration	
	2. Major Academic Divisions	
	3. Degrees, Diplomas and Certificates Offered	
Part B	Finances	15
	University of Toronto Financial Statements	
	1. Statement of Operations	
	2. Changes in Surplus/Deficit	
	3. Operating Fund Expense Summary	
	4. Operating Fund: Academic Expense Summary	
	5. Restricted Funds	
	University of Toronto Budget Reports	
	6. Expense Budget Summary	
	7. Academic Costs	
Part C	Research	25
	1. Research Population	
	2. Revenue from Externally Sponsored Research	
	3. Academic Linkages between the University of Toronto and International Institutions	
	4. Technology Transfer Activities:	
	a) Invention Disclosures	
	b) Spin-off Companies	
	c) Industrial Contracts and Grants	
	d) Government Funding Leveraged by Industrial Collaboration	
Part D	Students	31
	1. Enrolment by Campus and Faculty/College	
	2. Enrolment by Age and Gender Balance	
	3. International Student Enrolment by Geographic Origin	
	4. International Student Enrolment by Geographic Origin: Five-Year Trend	
	5. Ten-Year Enrolment Trends, All Students	
	6. Gender Balance of Graduate and Undergraduate Enrolments by Field of Study	
	7. Undergraduate Intake by Faculty	
	8. Graduate Intake by Faculty	
	9. Total Intake	
	10. Degrees Awarded by Field of Study and Gender	
	11. Tuition Fee Schedule for Domestic and International Students	
	12. Tuition Fee Schedule for Self-Funded Programs	
Part E	Graduates	51
	1. Graduates by Region	
	2. Number of Degree Affiliations by College or Faculty	
	3. Total Annual Gifts Received	
	4. Total Annual Gifts Received: Source of Donations	

CONTENTS (continued)

Part F	Student Awards	57
	1. Undergraduate Student Support : Admission Scholarships, In Course Scholarships and Bursaries by Faculty and College	
	2. OSAP and University of Toronto Advanced Planning for Students Program (UTAPS) by Faculty and College	
	3. Graduate Student Support by Source	
	4. Graduate Student Support by S.G.S. Division	
Part G	Faculty and Administrative Staff	63
	1. Distribution of Full-Time Appointed Tenured/Tenure Stream Faculty by Major Division and Main Appointment	
	2. Distribution of Full-Time Tenured/Tenure Stream Faculty by Rank and Gender	
	3. Age Distribution of Tenured/Tenure Stream Faculty	
	4. Distribution of Full and Part-Time (>=25%) Academic Staff and Librarians by Rank and Gender	
	5. Distribution of Full and Part-Time Administrative and Union Staff	
	6. Operating Fund Full-Time Equivalent Staff	
Part H	Library	71
	1. Library Collections	
	2. Number of Loans	
	3. Number of Computers in the Library	
	4. Digital Library E-Resources	
	5. Number of Electronic Articles Downloaded	
Part I	Physical Plant	75
	1. Usage of Assignable Space	
	2. Number of Buildings and Square Metres	
	3. Area of U of T Properties	
	4. Number of Parking Spaces	
	5. Number of Public Assembly Facilities	
	6. Number of University of Toronto Students in Residence	
Part J	Computing and Communications	81
	1. Number of UTOEmail Accounts at Year End	
	2. Number of Messages Delivered by UTOEmail Post Office	
	3. Number of Web Transactions	
	4. Institutional Internet Dial-in Services	
	a) Dial-in Modem	
	b) U of T/Bell Sympatico High Speed Edition (HSE)	
	c) Virtual Private Network (VPN)	
	5. Campus Wireless Network	
	6. Usage of Electronic Student Services	

Part A

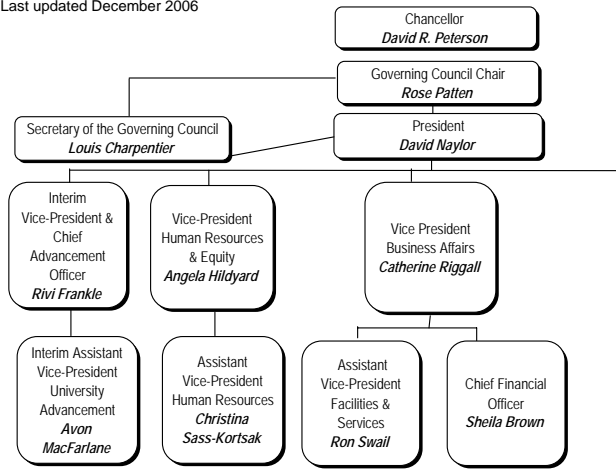
General

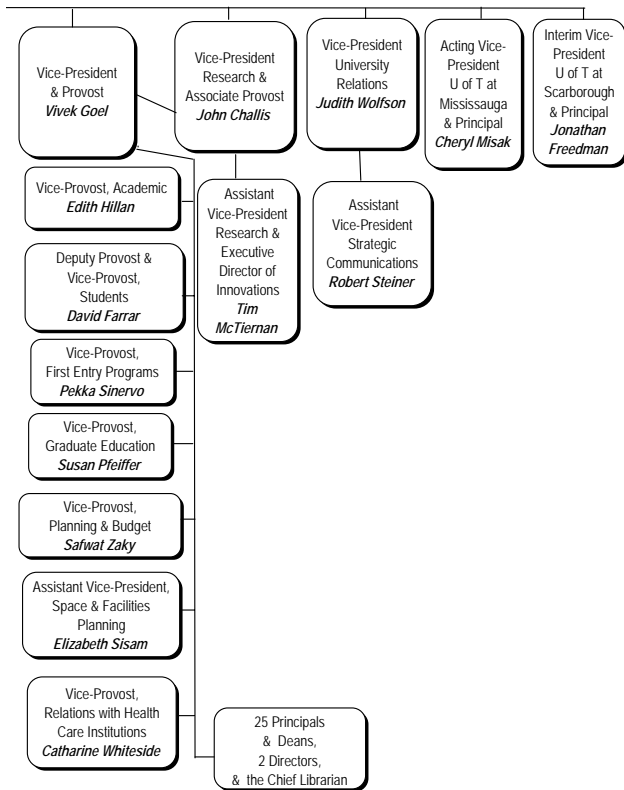
Organization of Senior Administration	4
Major Academic Divisions	6
Degrees, Diplomas and Certificates Offered	10

ORGANIZATION OF SENIOR ADMINISTRATION

2006-07

Last updated December 2006





MAJOR ACADEMIC DIVISIONS

2006-07

Faculty of Applied Science and Engineering

Aerospace Studies, Institute for (EDU A)
Chemical Engineering and Applied Chemistry, Department of
Civil Engineering, Department of
Edward S. Rogers Sr. Electrical and Computer Engineering,
Department of
Engineering Science, Division of (EDU B)
Environmental Engineering, Division of (EDU B)
Materials Science and Engineering, Department of
Mechanical and Industrial Engineering, Department of

Faculty of Architecture, Landscape, and Design

Faculty of Arts and Science (St. George Campus)

Anthropology, Department of
Astronomy & Astrophysics, Department of
Cell and Systems Biology, Department of
Chemistry, Department of
Classics, Department of
Commerce & Finance Program
Comparative Literature, Centre for (EDU A)
Computer Science, Department of
East Asian Studies, Department of
Ecology and Evolutionary Biology, Department of
Economics, Department of
English, Department of
Fine Art, Department of
French, Department of
Geography, Department of
Geology, Department of
Germanic Languages & Literatures, Department of
History, Department of
History & Philosophy of Science & Technology, Institute for (EDU A)
Italian Studies, Department of
Linguistics, Department of
Mathematics, Department of
Medieval Studies, Centre for (EDU A)
Near & Middle Eastern Civilizations, Department of
Philosophy, Department of
Physics, Department of
Political Science, Department of
Psychology, Department of
Religion, Department of
Slavic Languages & Literatures, Department of
Sociology, Department of
Spanish & Portuguese, Department of
Statistics, Department of
Theoretical Astrophysics, Canadian Institute for (CITA) (EDU A)
Women's Studies and Gender Studies, Institute for (EDU A)

Faculty of Arts and Science - Colleges (St. George Campus)

Constituent Colleges:

Innis College
New College
University College
Woodsworth College

Federated Colleges:

St. Michael's College
Trinity College
Victoria College

School of Continuing Studies

Faculty of Dentistry

Faculty of Forestry

School of Graduate Studies

Division I - Humanities
Division II - Social Sciences
Division III - Physical Sciences
Division IV - Life Sciences
Criminology, Centre of (EDU A)
Drama, Centre for the Study of (EDU A)
Industrial Relations and Human Resources, Centre for (EDU A)
Mathematical Finance Program, Master of (EDU B)

Faculty of Information Studies

Faculty of Law

Joseph L. Rotman School of Management

Faculty of Medicine

Anesthesia, Department of
Banting and Best Department of Medical Research
Biochemistry, Department of
Family and Community Medicine, Department of
Health Policy, Management and Evaluation, Department of
Immunology, Department of
Laboratory Medicine and Pathobiology, Department of
Medical Biophysics, Department of
Medical Genetics and Microbiology, Department of
Medical Imaging, Department of
Medicine, Department of
Nutritional Sciences, Department of
Obstetrics and Gynaecology, Department of
Occupational Science and Occupational Therapy, Department of
Ophthalmology and Vision Sciences, Department of
Otolaryngology - Head and Neck Surgery, Department of

MAJOR ACADEMIC DIVISIONS (continued)
2006-07

Faculty of Medicine (continued)

Paediatrics, Department of
Pharmacology, Department of
Physical Therapy, Department of
Physiology, Department of
Psychiatry, Department of
Public Health Sciences, Department of
Radiation Oncology, Department of
Rehabilitation Science, Department of
Speech-Language Pathology, Department of
Surgery, Department of

Multi-Faculty Centres and Institutes

Biomaterials and Biomedical Engineering, Institute of (EDU A)
Diaspora and Transnational Studies, Centre for (EDU B)
Environment, Centre for (EDU A)
European, Russian and Eurasian Studies, Centre for (EDU B)

Faculty of Music

Faculty of Nursing

Ontario Institute for Studies in Education (OISE/UT)

Adult Education and Counselling Psychology, Department of
Child Study, Institute of (EDU B)
Curriculum, Teaching and Learning, Department of
Human Development and Applied Psychology, Department of
Sociology and Equity Studies in Education, Department of
Theory and Policy Studies in Education, Department of

Leslie L. Dan Faculty of Pharmacy

Faculty of Physical Education and Health

Faculty of Social Work

Transitional Year Program

University of Toronto at Mississauga

Anthropology, Department of
Biology, Department of
Chemical and Physical Sciences, Department of
Communication and Culture, Insititute of (EDU A)
Economics, Department of
English and Drama, Department of
French, German and Italian, Department of
Geography, Department of
Historical Studies, Department of
Philosophy, Department of
Management, Department of
Mathematical and Computational Sciences, Department of
Political Science, Department of
Psychology, Department of
Sociology, Department of

University of Toronto at Scarborough

Computer & Mathematical Sciences, Department of
Humanities, Department of
Life Sciences, Department of
Management, Department of
Physical & Environmental Sciences, Department of
Social Sciences, Department of

Woodsworth College

Notes:

Only Institutes in the EDU A and EDU B categories are included.

An EDU A Institute may enrol students, has faculty appointing rights, and requires Governing Council approval.

An EDU B Institute may enrol students, has no (or limited) faculty appointment rights, and requires Governing Council approval.

DEGREES, DIPLOMAS AND CERTIFICATES OFFERED
2006-07

UNDERGRADUATE AND FIRST PROFESSIONAL DEGREES

Faculty of Applied Science and Engineering:

Bachelor of Applied Science B.A.Sc.

Faculty of Arts and Science

St. George Campus:

Honours Bachelor of Arts Hon.B.A.
Honours Bachelor of Science Hon.B.Sc.
Bachelor of Commerce B.Com.

University of Toronto at Mississauga:

Honours Bachelor of Arts Hon.B.A.
Honours Bachelor of Science Hon.B.Sc.
Bachelor of Commerce B.Com.

University of Toronto at Scarborough:

Honours Bachelor of Arts Hon.B.A.
Honours Bachelor of Science Hon.B.Sc.
Bachelor of Business Administration B.B.A.

Faculty of Dentistry:

Doctor of Dental Surgery D.D.S.

Faculty of Law:

Juris Doctor J.D.
J.D. (and a
certificate in Env.
Studies)
Juris Doctor and Certificate in Environmental Studies

Faculty of Medicine:

Doctor of Medicine M.D.
Bachelor of Science, Medical Radiation Sciences B.Sc.Med.Rad.Sc.

Faculty of Music:

Bachelor of Music Mus.Bac.
Bachelor of Music in Performance Mus Bac.Perf.

Faculty of Nursing:

Bachelor of Science in Nursing B.Sc.N.

OISE/UT:

Bachelor of Education B.Ed.

Leslie L. Dan Faculty of Pharmacy:

Doctor of Pharmacy Pharm.D.
Bachelor of Science in Pharmacy B.Sc.Phm.

Faculty of Physical Education and Health:

Bachelor of Physical and Health Education B.P.H.E.

**UNDERGRADUATE AND FIRST PROFESSIONAL DIPLOMAS
AND CERTIFICATES**

Faculty of Dentistry:

Certificate of Qualification in Dentistry Cert.Q.P.Dent.

Faculty of Music:

Advanced Certificate in Performance Adv.Cert.Perf.
Artist Diploma Art.Dip.Mus.
Diploma in Operatic Performance Dip.Op.Perf.

Faculty of Nursing:

Certificate as a Nurse Practitioner
(Primary Health Care) Cert.N.P.(PHC)

OISE/UT:

Diploma in Technological Education Dip.T.Ed.

University of Toronto at Scarborough:

Certificate in Business Cert.Bus.

Woodsworth College:

Certificate in Human Resource Management C.H.R.M.
Certificate in Teaching English to Speakers of Other
Languages C.T.E.S.O.L.

GRADUATE DEGREES

School of Graduate Studies:

Executive Master of Business Administration E.M.B.A.
Juris Doctor and Doctor of Philosophy (Economics,
Philosophy, Political Science) combined programs J.D./Ph.D.
Juris Doctor and Master of Arts (Criminology,
Economics, Russian and East European Studies)
combined programs J.D./M.A.
Juris Doctor and Master of Business Administration
combined program J.D./M.B.A.
Juris Doctor and Master of Information Studies
combined program J.D./M.I.St.
Juris Doctor and Master of Social Work combined
program J.D./M.S.W.
Doctor of Dentistry and Doctor of Philosophy combined
program D.D.S./Ph.D.
Doctor of Education Ed.D.
Doctor of Juridical Science S.J.D.
Doctor of Medicine and Doctor of Philosophy combined
program M.D./Ph.D.
Doctor of Music Mus.Doc.
Doctor of Philosophy Ph.D.
Master of Applied Science M.A.Sc.
Master of Architecture M.Arch.

DEGREES, DIPLOMAS AND CERTIFICATES OFFERED (continued)
2006-07

School of Graduate Studies (continued):

Master of Arts	M.A.
Master of Biotechnology	M.Biotech
Master of Business Administration	M.B.A.
Master of Business Administration and Master of Arts in Russian and East European Studies combined program	M.B.A./M.A. (REES)
Master of Business Administration and Master of Nursing combined program	M.N./M.B.A.
Master of Business Administration and Jeffrey Skoll Bachelor of Applied Science combined program	B.A.Sc./M.B.A.
Master of Education	M.Ed.
Master of Engineering	M.Eng.
Master of Engineering in Advanced Design and Manufacturing	M.Eng.D.M.
Master of Engineering in Telecommunications	M.Eng.Tel.
Masters in Environmental Sciences	M.Env.Sc.
Master of Financial Economics	M.F.E.
Master of Forest Conservation	M.F.C.
Master of Health Science	M.H.Sc.
Master of Health Science in Health Administration and Master of Social Work	M.H.Sc./M.S.W.
Master of Industrial Relations and Human Resources	M.I.R.H.R.
Master of Information Studies	M.I.St.
Master of Landscape Architecture	M.L.A.
Master of Laws	LL.M.
Master of Management & Professional Accounting	M.M.P.A.
Master of Mathematical Finance	M.M.F.
Master of Museum Studies	M.M.St.
Master of Music	Mus.M.
Master of Nursing	M.N.
Master of Science	M.Sc.
Master of Science in Forestry	M.Sc.F.
Master of Science in Occupational Therapy	M.Sc.O.T.
Master of Science in Planning	M.Sc.Pl.
Master of Science in Physical Therapy	M.Sc.P.T.
Master of Science in Physical Therapy and Master of Science in Rehabilitation Science combined program	M.Sc.P.T./M.Sc.
Master of Social Work	M.S.W.
Master of Spatial Analysis - joint program with Ryerson	M.S.A.
Masters in Studies in Law	M.S.L.
Master of Teaching	M.T.
Master of Urban Design	M.U.D.
Master of Urban Design Studies	M.U.D.S.
Master of Visual Studies	M.V.S.

Part B

Finances

University of Toronto Financial Statements

Statement of Operations	16
Changes in Surplus/Deficit	18
Operating Fund: Expense Summary	19
Operating Fund: Academic Expense Summary	20
Restricted Funds	21

University of Toronto Budget Reports

Expense Budget Summary	22
Academic Costs	23

UNIVERSITY OF TORONTO FINANCIAL STATEMENTS 2005-06

STATEMENT OF OPERATIONS

for the year ended April 30, 2006

(with comparative figures for the year ended April 30, 2005)

(millions of dollars)

	OPERATING FUND	ANCILLARY OPERATIONS	CAPITAL FUND	RESTRICTED FUNDS	TOTAL 2006	TOTAL 2005
Revenues						
Government Grants - general operations	587.2				587.2	553.5
Student Fees	499.0	5.8	0.9		505.7	472.3
Government & other grants - restricted purposes		(0.8)	32.0	279.4	310.6	280.2
Sales, services and sundry income	76.1	125.9	0.2		202.2	194.8
Investment income (loss)						
Endowments	35.5			45.3	80.8	58.6
Other	13.0	1.5		24.7	39.2	24.2
Donations		1.3	5.1	30.6	37.0	48.0
Contract research	4.7			16.9	21.6	22.2
Total Revenues	1,215.5	133.7	38.2	396.9	1,784.3	1,653.8

UNIVERSITY OF TORONTO FINANCIAL STATEMENTS 2005-06

STATEMENT OF OPERATIONS (continued)

for the year ended April 30, 2006

(with comparative figures for the year ended April 30, 2005)

(millions of dollars)

	OPERATING FUND	ANCILLARY OPERATIONS	CAPITAL FUND	RESTRICTED FUNDS	TOTAL 2006	TOTAL 2005
Expenses						
Salaries and benefits	815.7	10.6		186.0	1,012.3	936.3
Materials and supplies	73.9	2.6		123.5	200.0	194.7
Scholarships, fellowships and bursaries	106.5				106.5	110.9
Amortization of capital assets	6.0	10.0	75.4		91.4	83.5
Cost of sales and services		79.1			79.1	77.6
Utilities	42.9	8.2			51.1	44.5
Repairs and maintenance	35.7	10.8	1.6	6.1	54.2	48.8
Travel and conferences	14.6			18.0	32.6	31.3
Interest on long-term debt	10.3	19.0			29.3	26.6
External contracted services	16.1			6.4	22.5	17.7
Telecommunications	9.6			1.4	11.0	9.6
Other	12.8			6.5	19.3	31.1
Total Expenses	1,144.1	140.3	77.0	347.9	1,709.3	1,612.6

UNIVERSITY OF TORONTO FINANCIAL STATEMENTS 2005-06

CHANGES IN SURPLUS/DEFICIT

for the year ended April 30, 2006

(with comparative figures for the year ended April 30, 2005)

(millions of dollars)

	OPERATING FUND	ANCILLARY OPERATIONS	CAPITAL FUND	RESTRICTED FUNDS	TOTAL 2006	TOTAL 2005
Net Income (loss)	71.4	(6.6)	(38.8)	49.0	75.0	41.2
Net transfers between funds	(26.8)	1.7	17.6	7.5		
Transfer of capital assets	(40.1)		40.1			
Change in internally restricted	(26.1)	0.4	(1.6)	(15.8)	(43.1)	(32.6)
Change in investments in capital assets		(2.3)	(15.2)		(17.5)	(78.5)
Transfers of donations to endowments				(13.9)	(13.9)	(18.0)
Transfer from internally restricted endowments				(26.8)	(26.8)	(9.2)
Net change in surplus (deficit) for the year	(21.6)	(6.8)	2.1		(26.3)	(97.1)
Deficit, beginning of the year	(37.9)	(73.0)	(33.9)		(144.8)	(47.7)
Deficit, end of year	(59.5)	(79.8)	(31.8)		(171.1)	(144.8)

UNIVERSITY OF TORONTO FINANCIAL STATEMENTS 2005-06

OPERATING FUND: EXPENSE SUMMARY

Expense Summary for the year ended April 30, 2006

(with comparative totals for the year ended April 30, 2005)

(thousands of dollars)

	ACADEMIC SALARIES	OTHER SALARIES	STAFF BENEFITS	TOTAL SALARIES AND BENEFITS	SUPPLIES AND OTHER EXPENSES	SCHOLARSHIPS FELLOWSHIPS BURSARIES	TOTAL	ELIMINATIONS AND RECLASS- IFICATIONS*	TOTAL DIVISIONAL EXPENSE
Academic	\$352,917	\$155,277	\$105,960	\$614,154	\$146,999		\$761,153	(\$12,828)	\$748,326
Academic Services	9,492	25,003	7,145	41,639	37,088		78,727	(5,588)	73,139
Campus & Student Services		15,392	2,849	18,240	6,576		24,816	2,521	27,337
Student Assistance		3,105	376	3,481	775	106,510	110,766	170	110,936
Operation & Maintenance of Physical Plant		37,298	7,706	45,004	120,471		165,475	(58,736)	106,739
Administration		55,488	11,514	67,002	19,506		86,508	(7,720)	78,788
Interest								10,344	10,344
Renovations and Alterations					8,223		8,223	(5,132)	3,090
Amortization								6,032	6,032
Other Expenditures		4,812	549	5,361	14,434		19,795	(260)	19,535
Sub-Total	362,409	296,374	136,099	794,881	354,072	106,510	1,255,464	(71,197)	1,184,267
Eliminations	(11,143)	(18,073)	50,006	20,791	(\$91,988)		(71,197)		
Total Expenses	\$351,266	\$278,301	\$186,105	\$815,672	\$262,085	\$106,510	\$1,184,267		1,184,267
2004-05 Comparatives	\$325,835	\$259,472	\$168,991	\$754,297	\$241,048	\$110,905	1,106,251		
Percentage Change	7.8%	7.3%	10.1%	8.1%	8.7%	-4.0%	7.1%		

*Eliminations and Reclassifications are external recovery of salaries and benefits as well as internal departmental changes between different functional groups.

UNIVERSITY OF TORONTO FINANCIAL STATEMENTS 2005-06

OPERATING FUND: ACADEMIC EXPENSE SUMMARY

For the year ending April 30, 2006

(with comparative totals for the year ended April 30, 2005)

(thousands of dollars)

	NET EXPENSES 2005-06	NET EXPENSES 2004-05
Arts & Science, Colleges & Schools:		
Faculty of Arts & Science	\$189,017	\$179,598
Federated Colleges Block Grant	10,629	10,043
Graduate Centres & Institutes	6,282	6,465
Mississauga, University of Toronto	50,497	46,920
Scarborough, University of Toronto	46,293	42,714
School of Continuing Studies	9,643	9,891
School of Graduate Studies	4,324	4,404
Transitional Year Program	1,434	1,335
Health Science Faculties/Schools:		
Faculty of Dentistry	\$22,534	\$22,385
Faculty of Medicine	108,779	96,420
Faculty of Nursing	8,026	8,376
Faculty of Pharmacy	9,778	9,428
Faculty of Physical Education and Health	18,450	18,139
Other Professional Faculties:		
Faculty of Applied Science & Engineering	\$56,128	\$58,831
Faculty of Architecture, Landscape, and Design	5,558	5,225
Faculty of Forestry	2,767	2,428
Faculty of Information Studies	7,149	4,731
Faculty of Law	16,344	16,024
Management, Rotman School of	44,418	41,117
Faculty of Music	9,093	8,466
OISE/UT	50,543	47,493
Faculty of Social Work	4,845	4,756
University of Toronto Schools	8,158	8,181
Other Academic	\$57,638	\$43,931
Total Academic Expense	\$748,326	\$697,300

UNIVERSITY OF TORONTO FINANCIAL STATEMENTS 2005-06

RESTRICTED FUNDS

Endowments and Expendable Funds at Fair Value

for the year ending April 30, 2006 (with comparative figures for the year ended April 30, 2005)

(thousands of dollars)

	ENDOWMENT FUNDS		EXPENDABLE FUNDS	
	2006	2005	2006	2005
l'Anson Fund	\$2,952	\$2,661	\$211	\$106
Connaught Funds	94,950	85,397	6,934	6,574
Departmental Funds	155,227	146,868	125,967	122,049
Faculty Endowment Funds	507,564	434,753	12,640	10,720
Miscellaneous Funds	33,749	32,106	9,735	12,456
Ontario Student Opportunity Trust Funds Phase 1	345,660	311,344	21,010	19,709
Ontario Student Opportunity Trust Funds Phase 2	40,199	41,486	1,768	946
Ontario Trust for Student Support	19,945		308	
Research Funds	134,882	121,234	137,474	145,457
Student Aid Funds	293,642	246,909	25,565	23,516
Supplemental Retirement Arrangement	0	0	147,226	131,576
Total University of Toronto	\$1,628,770	\$1,422,758	\$488,838	\$473,109
Affiliated Universities	303,894	265,526	na	na
Total	\$1,932,664	\$1,688,284	na	na

UNIVERSITY OF TORONTO BUDGET REPORTS

EXPENSE BUDGET SUMMARY

Time Series Comparison of Major Budget Categories, based on net expense budgets

2004-05 to 2006-07

(Millions of dollars)

	2006-07	PERCENT INCREASE OVER PRIOR YEAR	2005-06	PERCENT INCREASE OVER PRIOR YEAR	2004-05
Academic	674.4	8%	623.2	6%	587.7
Academic Services	63.5	0%	63.4	5%	60.6
Campus & Student Services	1.1	-30%	1.6	13%	1.4
Student Assistance	83.8	7%	78.2	18%	66.5
Facilities & Services	57.1	13%	50.4	18%	42.8
Utilities	54.2	56%	34.7	4%	33.2
Alterations, Renovations, Lease Costs	1.5	-10%	1.6	-1%	1.6
Administration	70.8	4%	68.0	0%	67.9
General University Expense	85.9	16%	74.3	-5%	78.4
Municipal Taxes	4.7	4%	4.5	6%	4.2
Total Expense Budget Summary	1,096.9	10%	999.9	6%	944.4
Administrative costs as % of Academic Costs	11%		11%		12%
Administrative Costs as % of Academic Costs & Academic Services Costs	10%		10%		10%
General University Costs as % of Academic Costs	13%		12%		13%

UNIVERSITY OF TORONTO BUDGET REPORTS

ACADEMIC COSTS

Time Series Comparison of Major Academic Costs, based on Net Expense Budgets

2004-05 to 2006-07

(Millions of dollars)

	2006-07	PERCENT OF BUDGET	PERCENT INCREASE OVER PRIOR YEAR	2005-06	PERCENT OF BUDGET	PERCENT INCREASE OVER PRIOR YEAR	2004-05	PERCENT OF BUDGET
Gross Expense Budget	951.4			915.4			845.6	
Recoveries	(120.6)			(147.7)			(128.6)	
Divisional Income	(156.4)			(144.5)			(129.2)	
Net Expense Budget	674.4		8%	623.2		6%	587.7	
Arts & Science, Colleges & Schools	295.8	44%	12%	264.2	42%	5%	252.5	43%
Health Sciences	112.4	17%	8%	103.7	17%	3%	100.3	17%
Other Professional Faculties	125.2	19%	5%	119.1	19%	5%	113.3	19%
Other Academic Costs	141.0	21%	4%	136.2	22%	12%	121.6	21%
Net Expense Budget	674.4	100%		623.2	100%		587.7	100%
Instructional Salaries	501.7	53%	1%	498.6	54%	9%	458.9	54%
Other Salaries & Wages	142.6	15%	10%	130.2	14%	8%	120.4	14%
Benefits	107.0	11%	10%	97.2	11%	12%	86.9	10%
Books & Equipment	9.2	1%	9%	8.4	1%	-13%	9.6	1%
Supplies & Services	158.1	17%	5%	150.4	16%	7%	140.1	17%
Student Awards	32.8	3%	7%	30.6	3%	3%	29.7	4%
Gross Expense Budget	951.4	100%		915.4	100%		845.6	100%

Part C

Research

Research Population	26
Revenue from Externally Sponsored Research	27
Academic Linkages between the University of Toronto and International Institutions	28
Technology Transfer Activities:	
a) Invention Disclosures	29
b) Spin-off Companies	29
c) Industrial Contracts and Grants	30
d) Government Funding Leveraged by Industrial Collaboration	30

RESEARCH POPULATION*September 2006*

	HUMANITIES	SOCIAL SCIENCES	PHYSICAL SCIENCES	LIFE SCIENCES	TOTAL
Full-Time Faculty	438	698	507	734	2,377
Part-Time Faculty	28	33	27	171	259
Status-Only Faculty	46	152	125	2,700	3,023
Full-Time Research Associates	4	14	114	93	225
Part-Time Research Associates	3	11	9	6	29
Post-Doctoral Fellows	20	26	287	1,091	1,424
Graduate Students	1,388	4,744	2,273	3,765	12,170

Notes:

1. Numbers shown here may differ from the full time faculty counts in other tables because of selection criteria for inclusion in the research population.
2. Faculty includes professorial ranks only.
3. Faculty members may have multiple appointments; only the main appointment was counted in the research population.
4. The figure for post-doctoral fellows includes those at the affiliated hospitals.

REVENUE FROM EXTERNALLY SPONSORED RESEARCH

(thousands of dollars)

	2003-04	2004-05	2005-06
University of Toronto			
Grants & Contracts	\$292,681	\$324,178	\$334,159
Donations	1,305	1,420	990
Subtotal	293,986	325,598	335,149
Overhead	30,973	32,215	28,185
Total, University of Toronto	\$324,959	\$357,813	\$363,334
Affiliated Hospitals*	\$345,312	\$397,434	\$399,826 **
Grand Total	\$670,271	\$755,247	\$763,160 **

* Overhead included

** Estimate only, using previous year's revenue figure for the Affiliated Hospitals

ACADEMIC LINKAGES BETWEEN THE UNIVERSITY OF TORONTO AND INTERNATIONAL INSTITUTIONS

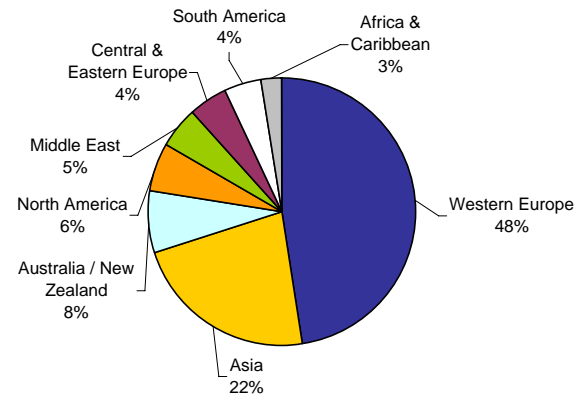
November 2006

REGION	NUMBER OF MOU'S*
Western Europe	74
Asia	35
Australia / New Zealand	12
North America	9
Middle East	8
Central & Eastern Europe	7
South America	7
Africa	2
Caribbean	2
Total	156

*Memoranda of Understanding (MOU's) are formal arrangements between institutions, which outline how they plan to cooperate over a specified period of time (normally, five years).

The areas included in MOU's are:

- joint research activities,
- participation in each institution's seminars and academic meetings,
- exchange of academic materials,
- short-term academic programs, and
- exchange of students.



TECHNOLOGY TRANSFER ACTIVITIES**INVENTION DISCLOSURES**

	2003-04	2004-05	2005-06
Number of Inventions Disclosed*	164	224	162
Gross Royalties			
Innovations Foundation / Innovations at U of T	1,407,486	1,052,752	548,383
Other	1,707,892	722,207	489,022
Total Gross Royalties	\$3,115,378	\$1,774,959	\$1,037,405

* Excluding affiliated hospital inventions.

SPIN-OFF COMPANIES

	2003-04	2004-05	2005-06
Number of Active companies	100	103	105
Number of Employees in Canada	3,638 **	3,028 **	3,032 **
Reported Annual Revenue	\$821,000,000 **	\$725,100,000 **	\$725,100,000 **

** As new surveys were not conducted, data were estimated based on the 2002-03 numbers.

TECHNOLOGY TRANSFER ACTIVITIES (continued)

INDUSTRIAL CONTRACTS AND GRANTS*

(April 2004 - March 2005)

Contracts	\$37,187,341
Grants	\$27,468,169
Total industrial research funding	\$64,655,510

GOVERNMENT FUNDING LEVERAGED BY INDUSTRIAL COLLABORATION*

Networks of Centres of Excellence (April 2004 - March 2005)	UofT participated in 18 of 20	\$9,820,713
Ontario Centres of Excellence (April 2004 - March 2005)	UofT participated in 4 of 4	\$6,959,936
Ontario Research and Development Challenge Fund (April 2004 - March 2005)		\$46,230,899
Federal Granting Councils: (April 2005 - March 2006)		
NSERC	University/Industry Programs**	\$6,529,485
CIHR	University/Industry Programs**	\$1,983,534
Total government funding leveraged by industrial collaborator		\$71,524,566

* Includes the affiliated hospitals.

** Excludes the Networks of Centres of Excellence.

Part D

Students

Enrolment by Campus and Faculty/College	32
Enrolment by Age and Gender Balance	34
International Student Enrolment by Geographic Origin	35
International Student Enrolment by Geographic Origin: Five-Year Trend	37
Ten-Year Enrolment Trends, All Students	40
Gender Balance of Graduate and Undergraduate Enrolments by Field of Study	41
Undergraduate Intake by Faculty	42
Graduate Intake by Faculty	43
Total Intake	44
Degrees Awarded by Field of Study and Gender	45
Domestic and International Students	46
Tuition Fee Schedule for Self-Funded Programs	50

ENROLMENT BY CAMPUS AND FACULTY/COLLEGE

November 1, 2005

FACULTY/COLLEGE BY CAMPUS	UNDERGRADUATE			GRADUATE DEGREES/ GRADUATE DIPLOMAS			ALL STUDENTS		FTE STUDENTS		
	Full- Time	Part- Time	% Female	Full- Time	Part- Time	% Female	Total	% Female	Under- graduate	Graduate	Total
St. George Campus											
Applied Science & Engineering	4,046	137	23%	1,106	194	25%	5,483	23%	4,241	1,164	5,405
Architecture Landscape & Design	---	---	---	289	2	42%	291	42%	---	290	290
Arts & Science	23,164	3,722	59%	2,676	150	49%	29,712	58%	21,810	2,721	24,531
Dentistry	339	0	57%	112	3	51%	454	55%	339	113	452
Forestry	---	---	---	75	0	51%	75	51%	---	75	75
Graduate Centres & Institutes	---	---	---	168	40	62%	208	62%	---	180	180
Information Studies	---	---	---	265	134	64%	399	64%	---	305	305
Law	569	33	50%	105	7	54%	714	51%	589	107	696
Management	---	---	---	626	330	29%	956	29%	---	726	726
Medicine	3,343	2	49%	2,321	119	64%	5,785	55%	3,345	2,357	5,702
Music	439	24	57%	127	10	55%	600	57%	463	130	593
Nursing	305	12	92%	203	167	94%	687	93%	307	253	560
OISE/UT	1,293	6	66%	1,124	752	77%	3,175	73%	1,306	1,350	2,655
Pharmacy	832	28	73%	100	24	58%	984	71%	899	107	1,006
Physical Education & Health	530	25	65%	41	7	58%	603	65%	520	43	563
Social Work	---	---	---	272	55	87%	327	87%	---	289	289
Transitional Year Program	56	208	59%	---	---	---	264	59%	99	---	99
Woodsworth Certificate and Diploma Programs	29	125	82%	---	---	---	154	82%	68	---	68
Total St. George	34,945	4,322	55%	9,610	1,994	56%	50,871	55%	33,984	10,209	44,193

ENROLMENT BY CAMPUS AND FACULTY/COLLEGE (continued)

November 1, 2005

FACULTY/COLLEGE BY CAMPUS	UNDERGRADUATE			GRADUATE DEGREES/ GRADUATE DIPLOMAS			ALL STUDENTS		FTE STUDENTS		
	Full- Time	Part- Time	% Female	Full- Time	Part- Time	% Female	Total	% Female	Under- graduate	Graduate	Total
U of T at Mississauga											
Arts & Science	8,512	856	59%	160	0	56%	9,368	59%	7,752	160	7,912
Management at UTM (MMPA, DIFA)	---	---	---	95	46	57%	141	57%	---	109	109
Total U of T at Mississauga	8,512	856	59%	255	46	56%	9,669	59%	7,752	269	8,021
U of T at Scarborough											
Arts & Science	8,719	828	59%	50	0	60%	9,547	59%	7,933	50	7,983
Graduate, all other faculties	---	---	---	6	0	50%	6	50%	---	6	6
Total Scarborough	8,719	828	59%	56	0	59%	9,603	59%	7,933	56	7,989
Grand Total	52,176	6,006	57%	9,921	2,040	56%	70,143	56%	49,669	10,534	60,203

Note: Excludes 1,256 FTE students in the Toronto School of Theology.

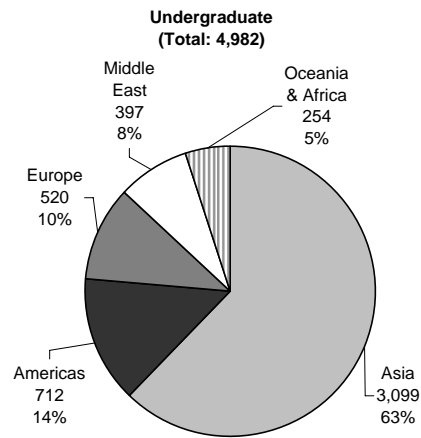
	HEADCOUNT	FTE
First Entry Undergraduate	51,266	42,817
Doctoral Stream Graduate	7,466	7,173
Undergraduate and Graduate Professional	11,411	10,214
Total	70,143	60,203

ENROLMENT BY AGE AND GENDER BALANCE*November 1, 1995 vs. November 1, 2005*

	1995			2005		
	Male	Female	Total	Male	Female	Total
Full-Time Undergraduate						
Number	13,964	15,978	29,942	22,697	29,479	52,176
Percent	46.6%	53.4%	100.0%	43.5%	56.5%	100.0%
Median Age	21.8	21.4	21.6	21.2	21.1	21.1
Full-Time Graduate						
Number	3,339	2,828	6,167	4,481	5,440	9,921
Percent	54.1%	45.9%	100.0%	45.2%	54.8%	100.0%
Median Age	27.4	26.9	27.2	28.2	28.0	28.1
Part-Time Undergraduate						
Number	4,803	7,650	12,453	2,605	3,401	6,006
Percent	38.6%	61.4%	100.0%	43.4%	56.6%	100.0%
Median Age	24.7	26.7	25.8	24.5	25.6	25.0
Part-Time Graduate						
Number	829	884	1,713	804	1,236	2,040
Percent	48.4%	51.6%	100.0%	39.4%	60.6%	100.0%
Median Age	30.7	32.0	31.3	33.6	34.5	34.2

INTERNATIONAL STUDENT ENROLMENT BY GEOGRAPHIC ORIGIN

November 1, 2005

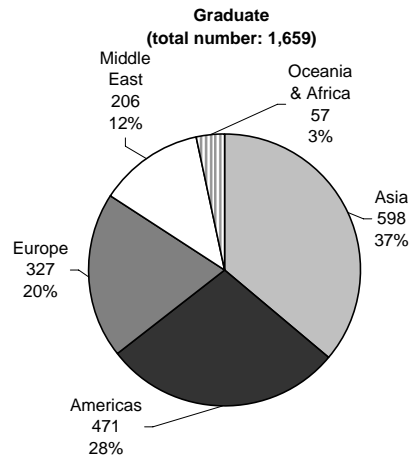


Top 3 Countries in each Region			
	Country	Count	Percentage of Undergraduate
Americas	U.S.A	433	10.0%
	Trinidad & Tobago	59	1.4%
	Brazil	33	0.8%
Asia	China & Hong Kong	1,370	31.7%
	South Korea	613	14.2%
	Pakistan	237	5.5%
Europe	United Kingdom	123	2.8%
	Germany	55	1.3%
	France	52	1.2%
Middle East	Saudi Arabia	99	2.3%
	Israel	58	1.3%
	Iran	32	0.7%
	United Arab Emirates	32	0.7%
Oceania & Africa	Australia	55	1.3%
	Nigeria	47	1.1%
	Kenya	33	0.8%

Note: In Fall 2005, the largest percentage of undergraduate international students were from China including Hong Kong (31.7%) followed by South Korea (14.2%).

INTERNATIONAL STUDENT ENROLMENT BY GEOGRAPHIC ORIGIN (continued)

November 1, 2005



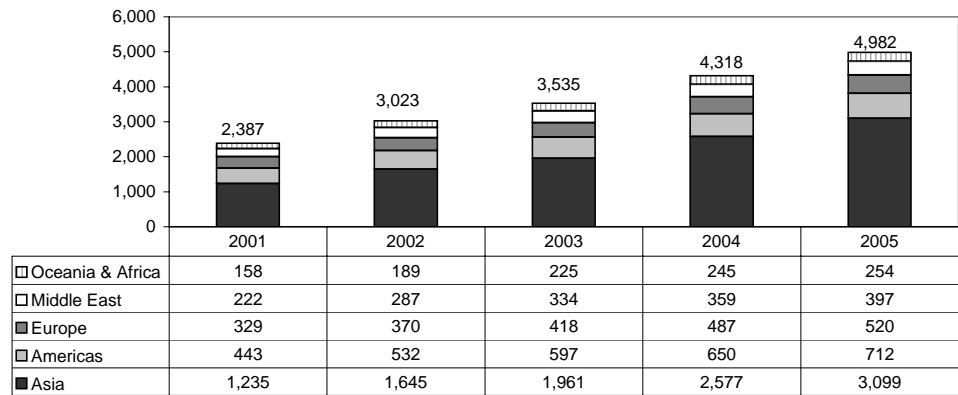
Top 3 Countries in each Region			
	Country	Count	Percentage of Graduate
Americas	U.S.A.	315	19.3%
	Mexico	47	2.9%
	Argentina	18	1.1%
Asia	China & Hong Kong	287	17.6%
	India	108	6.6%
	Japan	50	3.1%
Europe	Germany	76	4.7%
	United Kingdom	67	4.1%
	Greece	29	1.8%
Middle East	Iran	75	4.6%
	Israel	40	2.5%
	Turkey	24	1.5%
Oceania & Africa	Australia	17	1.0%
	Nigeria	10	0.6%
	Ghana	5	0.3%
	New Zealand	5	0.3%

Note: In Fall 2005, the largest percentage of graduate international students were from the USA (19.3%) followed by China including Hong Kong (17.6%).

INTERNATIONAL STUDENT ENROLMENT: FIVE-YEAR TREND

November 1, 2001 to November 1, 2005

Undergraduate Students



Note:

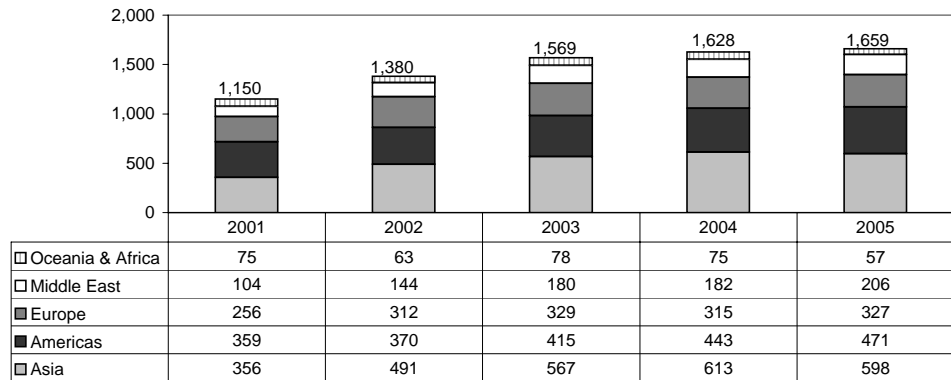
In Fall 2001, the largest percentage of undergraduate international students were from China including Hong Kong (17.1%) followed by the USA (11.5%).

In Fall 2005, the largest percentage of undergraduate international students were from China including Hong Kong (31.7%) followed by South Korea (14.2%).

INTERNATIONAL STUDENT ENROLMENT: FIVE-YEAR TREND(continued)

November 1, 2001 to November 1, 2005

Graduate Students



Note:

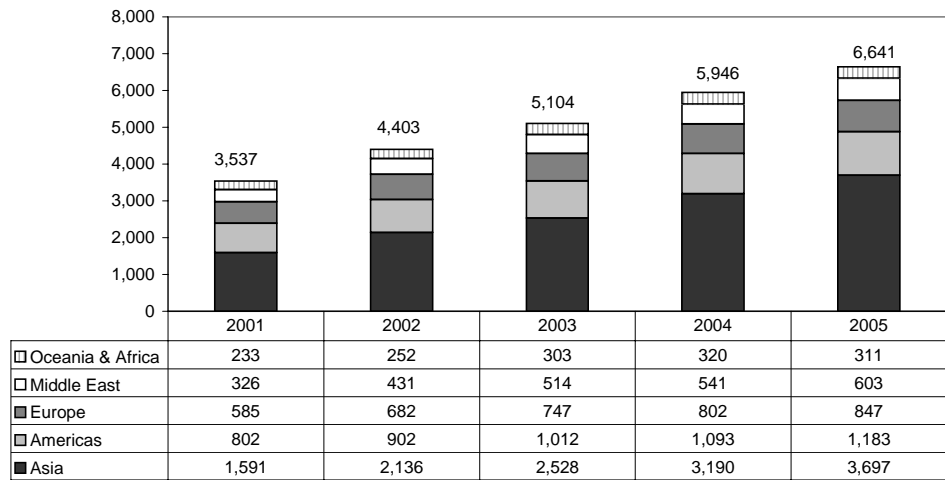
In Fall 2001, the largest percentage of graduate international students were from the USA (19.6%) followed by China including Hong Kong (15.1%).

In Fall 2005, the largest percentage of graduate international students were from the USA (19.3%) followed by China including Hong Kong (17.6%).

INTERNATIONAL STUDENT ENROLMENT: FIVE-YEAR TREND(continued)

November 1, 2001 to November 1, 2005

Total International Students



TEN-YEAR ENROLMENT TRENDS, ALL STUDENTS

November 1, 1996-November 1, 2005

	TOTAL STUDENTS*				INTERNATIONAL STUDENTS			
	Undergraduate		Graduate		Undergraduate		Graduate	
	Total	% Female	Total	% Female	Total	% Female	Total	% Female
1996	42,359	56.3%	9,886	53.4%	1,203	43.2%	823	37.8%
1997	42,362	56.8%	9,874	54.1%	1,141	41.3%	817	37.0%
1998	43,139	56.9%	9,658	54.9%	1,266	43.3%	822	39.1%
1999	44,234	56.8%	9,898	54.8%	1,568	44.4%	899	40.6%
2000	44,964	56.8%	10,163	55.4%	1,914	45.7%	980	40.9%
2001	47,265	57.6%	10,775	56.0%	2,387	47.7%	1,150	42.3%
2002	50,403	57.3%	11,597	56.1%	3,023	49.7%	1,380	43.9%
2003	55,369	57.9%	11,928	55.9%	3,535	49.9%	1,569	41.9%
2004	55,624	56.9%	12,068	55.4%	4,318	49.3%	1,628	41.6%
2005	58,182	56.5%	11,961	55.8%	4,982	49.1%	1,659	42.4%

* Total students includes domestic students and international students.

Notes:

1. Excludes students in the Toronto School of Theology.
2. Excludes students enrolled in Additional Qualification courses.

GENDER BALANCE OF UNDERGRADUATE AND GRADUATE ENROLMENT BY FIELD OF STUDY

November 1, 2005

STATISTICS CANADA FIELD OF STUDY	UNDERGRADUATE		GRADUATE	
	Total	% Female	Total	% Female
Biological Sciences	4,584	62%	443	58%
Education & Physical Education	2,147	68%	1,924	77%
Engineering & Applied Sciences	4,286	24%	1,644	29%
Fine & Applied Arts	1,488	69%	284	65%
General Arts and Science	10,060	60%	0	n/a
Health Professions	5,661	57%	2,718	67%
Humanities	8,851	62%	1,441	61%
Math & Physical Sciences	3,105	33%	886	29%
Social Sciences	15,951	60%	2,621	50%
Not Specified	2,049	59%	0	n/a
Total	58,182	57%	11,961	56%

Notes:

1. 'Education & Physical Education includes the Faculty of Physical Education and Health and the Ontario Institute for Studies in Education (OISE).
2. Excludes students in Additional Qualification courses (OISE).
3. Excludes students in the Toronto School of Theology.
4. Most of the "not specified" group includes first year and special students in Arts and Science.

UNDERGRADUATE INTAKE BY FACULTY

November 1, 2005

	TOTAL HEADCOUNT					PERCENTAGE OF TOTAL HEADCOUNT				
	GTA Area	Other Ontario	Other Canada	Inter- national	Total	GTA	Other Ontario	Other Canada	Inter- national	Total
Arts & Science										
Mississauga	2,060	229	82	262	2,633	78.2%	8.7%	3.1%	10.0%	100%
Scarborough	2,267	72	66	263	2,668	85.0%	2.7%	2.5%	9.9%	100%
St George	4,484	568	365	1,065	6,482	69.2%	8.8%	5.6%	16.4%	100%
Total Arts & Science	8,811	869	513	1,590	11,783	74.8%	7.4%	4.4%	13.5%	100%
Applied Science	897	81	111	185	1,274	70.4%	6.4%	8.7%	14.5%	100%
Dentistry	53	14	8	3	78	67.9%	17.9%	10.3%	3.8%	100%
Law	93	26	42	18	179	52.0%	14.5%	23.5%	10.1%	100%
OISE/UT	622	170	18	3	813	76.5%	20.9%	2.2%	0.4%	100%
Medicine										
B Sc (Med. Radiation Science)	48	24	10	2	84	57.1%	28.6%	11.9%	2.4%	100%
MD	70	38	18	1	127	55.1%	29.9%	14.2%	0.8%	100%
Total, Medicine	118	62	28	3	211	55.9%	29.4%	13.3%	1.4%	100%
Music	76	21	21	6	124	61.3%	16.9%	16.9%	4.8%	100%
Nursing	73	30	5	6	114	64.0%	26.3%	4.4%	5.3%	100%
Pharmacy	50	69	23	1	143	35.0%	48.3%	16.1%	0.7%	100%
Physical Education and Health	108	31	2	2	143	75.5%	21.7%	1.4%	1.4%	100%
Total Undergraduate	10,901	1,373	771	1,817	14,862	73.3%	9.2%	5.2%	12.2%	100%

Notes:

1. Excludes Transitional Year Program, Academic Bridging Program and Woodsworth diploma and certificate programs.
2. Intake data is not available for Post-Graduate Medical Education.

GRADUATE INTAKE BY FACULTY

November 1, 2005

	TOTAL HEADCOUNT					PERCENTAGE OF TOTAL HEADCOUNT				
	GTA Area	Other Ontario	Other Canada	Inter- national	Total	GTA	Other Ontario	Other Canada	Inter- national	Total
Applied Science & Engineering	224	38	33	86	381	58.8%	10.0%	8.7%	22.6%	100%
Architecture, Landscape & Design	34	9	19	17	79	43.0%	11.4%	24.1%	21.5%	100%
Arts & Science	493	114	140	266	1,013	48.7%	11.3%	13.8%	26.3%	100%
Dentistry	10	1	2	5	18	55.6%	5.6%	11.1%	27.8%	100%
Forestry	18	3	2	2	25	72.0%	12.0%	8.0%	8.0%	100%
Information Studies	113	28	14	22	177	63.8%	15.8%	7.9%	12.4%	100%
Law	18	2	3	37	60	30.0%	3.3%	5.0%	61.7%	100%
Management	239	19	30	70	358	66.8%	5.3%	8.4%	19.6%	100%
Medicine	494	105	67	41	707	69.9%	14.9%	9.5%	5.8%	100%
Music	37	9	11	9	66	56.1%	13.6%	16.7%	13.6%	100%
Nursing	82	30	12	1	125	65.6%	24.0%	9.6%	0.8%	100%
OISE/UT	316	46	14	30	406	77.8%	11.3%	3.4%	7.4%	100%
Pharmacy	18	5	4	3	30	60.0%	16.7%	13.3%	10.0%	100%
Physical Education & Health	11	2	0	0	13	84.6%	15.4%	0.0%	0.0%	100%
SGS Centres & Institutes	52	18	11	12	93	55.9%	19.4%	11.8%	12.9%	100%
Social Work	118	26	7	2	153	77.1%	17.0%	4.6%	1.3%	100%
Total Graduate	2,277	455	369	603	3,704	61.5%	12.3%	10.0%	16.3%	100%

Note: Includes Graduate diplomas in Medicine and Music.

TOTAL INTAKE*November 1, 2005*

	TOTAL HEADCOUNT					PERCENTAGE OF TOTAL HEADCOUNT				
	GTA Area	Other Ontario	Other Canada	Inter- national	Total	GTA	Other Ontario	Other Canada	Inter- national	Total
Total Undergraduate	10,901	1,373	771	1,817	14,862	73.3%	9.2%	5.2%	12.2%	100%
Total Graduate	2,277	455	369	603	3,704	61.5%	12.3%	10.0%	16.3%	100%
Undergraduate & Graduate	13,178	1,828	1,140	2,420	18,566	71.0%	9.8%	6.1%	13.0%	100%

DEGREES AWARDED BY FIELD OF STUDY AND GENDER

Calendar Year 2005

STATISTICS CANADA FIELD OF STUDY	UNDERGRADUATE		MASTERS		DOCTORAL		TOTAL	
	Total	% Female	Total	% Female	Total	% Female	Total	% Female
Biological Sciences	738	65%	70	63%	25	36%	833	64%
Education & Physical Education	1,333	73%	503	78%	150	67%	1,986	74%
Engineering & Physical Sciences	859	28%	466	28%	79	22%	1,404	28%
Fine & Applied Arts	260	68%	61	61%	17	59%	338	66%
General Arts & Science	991	49%					991	49%
Health Professions	829	68%	622	76%	131	56%	1,582	70%
Humanities	1,333	64%	359	63%	95	46%	1,787	63%
Mathematics and Physical Sciences	419	44%	174	38%	79	22%	672	40%
Social Sciences	2,973	65%	940	51%	102	47%	4,015	61%
Total	9,735	61%	3,195	58%	678	47%	13,608	59%

Notes:

1. Education & Physical Education includes the Faculty of Physical Education & Health and the Ontario Institute for Studies in Education (OISE).
2. Excludes Toronto School of Theology, Certificate and Diploma students.

TUITION FEE SCHEDULE FOR DOMESTIC AND INTERNATIONAL STUDENTS
2006-07

	DOMESTIC STUDENTS 2006 Entering Cohort	INTERNATIONAL STUDENTS 2006 Entering Cohort
APPLIED SCIENCE & ENGINEERING		
Bachelors	\$7,420	\$18,900
Master of Engineering M.Eng.	\$7,006	\$18,900
ARCHITECTURE, LANDSCAPE, AND DESIGN		
Master of Architecture M. Arch.	\$6,688	\$18,900
Master of Landscape Architecture M.L.A.	\$6,688	\$18,900
Master of Urban Design M.U.D.	\$6,688	\$18,900
ARTS & SCIENCE incl. SCARBOROUGH		
Bachelors	\$4,373	\$16,800
*Bachelors - Bioinformatics and Computational Biology	\$4,373	\$16,800
*Bachelors - Computer Science and Communication Culture & Information Technology	\$4,373	\$16,800
*Bachelors - Commerce/Bus Admin	\$4,373	\$16,800
*Bachelors - Mgt UTM	\$4,373	\$16,800
*Bachelors - UTSC - Joint Programs with Centennial	\$4,373	\$16,800
Master of Science in Planning M.Sc.Pl.	\$6,688	\$16,800
Master of Urban Design Studies M.U.D.S.	\$6,688	\$16,800
Masters of Spatial Analysis - Joint Program with Ryerson M.S.A.	\$6,688	\$16,800
Master of Biotechnology M.Biotech.	\$9,282	\$18,900
Master of Visual Studies M.V.S.	\$5,660	\$16,800
Masters in Environmental Science M.Env.Sc.	\$6,688	\$16,800
Master of Financial Economics M.F.E.	\$18,564	\$25,873

*For Arts and Science students in programs with additional cost recovery fees beginning in Year 2 the fee shown for Entering Year is the Arts and Science fee charged to all students in Year 1.

TUITION FEE SCHEDULE FOR DOMESTIC AND INTERNATIONAL STUDENTS (continued)
2006-07

	DOMESTIC STUDENTS 2006 Entering Cohort	INTERNATIONAL STUDENTS 2006 Entering Cohort
DENTISTRY		
Doctor of Dental Surgery D.D.S.	\$19,386	\$40,000
Graduate Specializations except Dental Public Health	\$14,811	\$32,200
Graduate Specializations - M.Sc. Specialty in Dental Public Health	\$7,006	\$15,231
Combined Specialization/PhD (Except Dental Public Health)	\$10,235	\$22,400
Combined Specialization/PhD in Dental Public Health	\$6,198	\$13,652
Dental Residents - M.O.H. Funded		
MSc Oral & Maxillofacial Surgery & Anaesthesia, MSc Oral Pathology & Oral Medicine	\$1,659	na
MSc Oral Pathology, MSc Oral Medicine	\$2,103	na
Dental Residents - non-M.O.H. Funded	\$19,386	\$42,000
FORESTRY		
Master of Forest Conservation M.F.C.	\$6,381	\$18,900
INFORMATION STUDIES		
Master of Information Studies M.I.St.	\$6,381	\$18,900
Master of Museum Studies M.M.St.	\$7,006	\$16,800
LAW		
Juris Doctor J.D.	\$17,280	\$26,849
Master of Laws L.L.M.	\$5,660	\$18,900
Masters in Studies in Law M.S.L.	\$5,660	\$12,600
Doctor of Juridical Science S.J.D.	\$5,660	\$12,600
MANAGEMENT		
Master of Business Administration M.B.A.	\$27,000	\$37,839
Master of Management & Professional Accounting M.M.P.A.	\$19,760	\$24,311

TUITION FEE SCHEDULE FOR DOMESTIC AND INTERNATIONAL STUDENTS (continued)
2006-07

	DOMESTIC STUDENTS 2006 Entering Cohort	INTERNATIONAL STUDENTS 2006 Entering Cohort
MEDICINE		
Doctor of Medicine M.D.	\$16,531	\$42,000
Health Science Diplomas	\$7,006	\$15,231
Radiation Sciences	\$4,944	\$17,365
M.Sc. Occupational Therapy and Physical Therapy	\$7,006	\$16,800
Master of Health Science	\$7,006	\$16,800
Master of Science in Biomedical Communications M.Sc.BMC.	\$7,006	\$16,800
Master of Management of Innovation	\$19,000	\$26,000
Combined MD/PhD	\$11,096	\$27,300
MUSIC		
Undergraduate	\$4,373	\$16,800
Operatic Performance Diploma	\$6,186	\$16,800
Mus.M. (Performance)	\$6,186	\$16,800
Mus.M. (Other)	\$5,660	\$12,600
Advanced Certificate in Performance	\$6,186	\$16,800
Doctor of Music Mus.D.	\$5,660	\$12,600
NURSING		
Bachelor of Science in Nursing B.Sc.N	\$5,869	\$16,800
Master of Nursing M.N.	\$6,381	\$16,800

TUITION FEE SCHEDULE FOR DOMESTIC AND INTERNATIONAL STUDENTS (continued)
2006-07

	DOMESTIC STUDENTS 2006 Entering Cohort	INTERNATIONAL STUDENTS 2006 Entering Cohort
OISE/UT		
Bachelor of Education B.Ed.	\$4,852	\$16,800
Technical & Vocational Certificates	\$4,852	\$16,800
Joint Master of Teaching in Human Devt and Curriculum	\$7,006	\$16,800
M.A. in Child Study	\$7,006	\$16,800
Master of Education M.Ed.	\$7,006	\$16,800
Doctor of Education Ed.D.	\$6,619	\$16,800
PHARMACY		
Bachelor of Science in Pharmacy B.Sc.Pharm.	\$10,283	\$21,000
Doctor of Pharmacy Pharm.D.	\$26,491	\$26,618
PHYSICAL EDUCATION AND HEALTH		
Bachelor of Physical Education & Health B.P.E.H.	\$4,373	\$16,800
S.G.S. (annual fee)		
Doctoral Stream	\$5,660	\$12,600
S.G.S. CENTERS AND INSTITUTES		
Master of Industrial Relations & Human Resources M.I.R.H.R.	\$7,006	\$18,900
SOCIAL WORK		
Master of Social Work M.S.W.	\$6,381	\$16,800
TRANSITIONAL YEAR PROGRAM		
Regular	\$3,717	na
Extended	\$1,859	na
WOODSWORTH		
Woodsworth Certificates	\$4,373	\$16,800

TUITION FEE SCHEDULE FOR SELF-FUNDED PROGRAMS
2006-07

	2006
	ENTERING
	COHORT
Masters of Engineering in Telecommunications	\$25,000
Masters of Engineering in Design & Manufacturing Course Fee	\$2,500
Summer Program in Medieval Latin	
Domestic	\$850
International	\$700 (U.S.)
Masters of Mathematical Finance	\$34,000
Executive Masters of Business Administration	\$80,000
Executive Masters of Business Administration (OMNIUM GEMBA)	60,000 (U.S.)
Diploma in Forensic Accounting	\$8,000
International Dentist Advanced Placement Program	\$25,000
Sponsored Medical Trainees	\$28,689
Visiting MD Student Course Fee	
1-2 weeks	\$220
3-4 weeks	\$290
5-6 weeks	\$360
7-8 weeks	\$440
Post-Masters Acute Care Nurse Practitioner Program	\$12,500
OISE/UT- Additional Qualifications Course	\$865
OISE/UT- Laboratory School - Half Day Program	\$5,900
OISE/UT- Laboratory School - Full Day Program	\$9,200
OISE/UT- Laboratory School - Bloorview MacMillan	\$8,890

Part E

Graduates

Graduates by Region	52
Number of Degree Affiliations by College or Faculty	53
Total Annual Gifts Received	54
Total Annual Gifts Received: Source of Donations	55

GRADUATES BY REGION*As of Fall 2006*

	NUMBER OF LIVING	PERCENTAGE OF LIVING	TOTAL*
Canada			
Ontario			
Metro Toronto	195,300	45.1%	211,814
Central Ontario	114,386	26.4%	122,268
Southwestern Ontario	22,502	5.2%	26,987
Eastern Ontario	21,224	4.9%	25,036
Northern Ontario	7,814	1.8%	9,128
Rest of Canada			
British Columbia	11,393	2.6%	13,329
Alberta	6,513	1.5%	7,293
Quebec	5,506	1.3%	5,958
Nova Scotia	2,466	0.6%	2,910
Manitoba	2,037	0.5%	2,494
Saskatchewan	1,522	0.4%	1,977
New Brunswick	1,062	0.2%	1,296
Newfoundland	1,056	0.2%	1,181
Prince Edward Island	295	0.1%	360
Northwest Territories	168	0.04%	181
Yukon Territory	113	0.03%	122
Nunavut	28	0.01%	28
Unknown within Canada	764	0.2%	23,170
Canada Total	394,149	90.9%	455,532
United States	21,283	4.9%	25,195
International	17,954	4.1%	19,276
Grand Total	433,386	100.0%	500,003

*Total includes living graduates and deceased graduates, and is included to give a historical context of the total number of individuals who graduated from the University of Toronto.

Notes:

1. Unique number of graduates (living plus deceased) is 500,003.
2. Regional breakdown is based on data as at Oct. 13, 2006.

**NUMBER OF DEGREE AFFILIATIONS
BY COLLEGE OR FACULTY**

As of Fall 2006

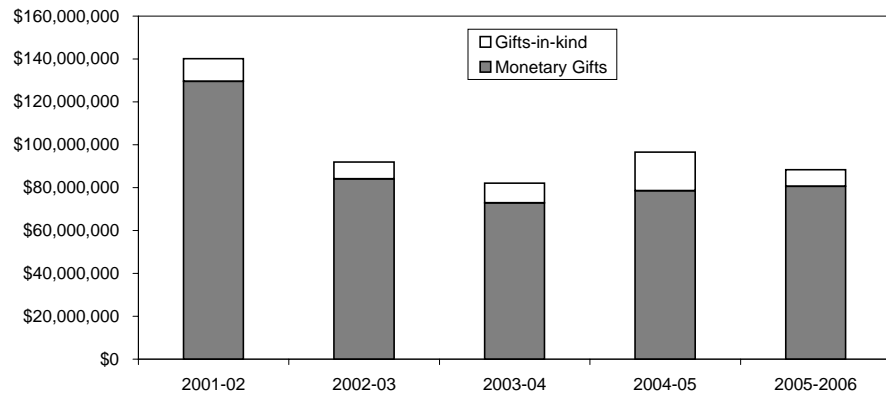
	NUMBER OF DEGREE AFFILIATIONS
Arts & Science Programs	
Constituent Colleges:	
Innis College	7,377
New College	17,749
University College	46,055
Woodsworth College	17,991
Federated Colleges:	
St. Michael's College	29,925
Trinity College	18,052
Victoria College	39,605
University of Toronto at Mississauga	31,299
University of Toronto at Scarborough	29,270
Other Faculties	
Applied Science & Engineering	46,296
Architecture, Landscape & Design	3,465
Dentistry	10,776
Forestry	2,810
Graduate Studies/ Graduate Institutes & Centres	98,625
Information Studies	5,903
Joseph L. Rotman School of Management	9,973
Law	7,832
Medicine, Doctor of	14,672
Other Medicine	14,841
Music	4,999
Nursing	10,170
OISE/UT:	
Undergraduate	46,946
Graduate	22,763
Institute of Child Study	2,040
Pharmacy	10,594
Physical & Occupational Therapy	6,611
Physical Education & Health	4,859
Social Work	7,579
Woodsworth Certificate & Diploma	6,785

Notes:

1. All honorary degrees are excluded.
2. Graduates with multiple degrees are counted in more than one constituency.
3. A single degree may be affiliated with more than one constituency.
4. Does not include Toronto School of Theology.

TOTAL ANNUAL GIFTS RECEIVED

2001-02 to 2005-06



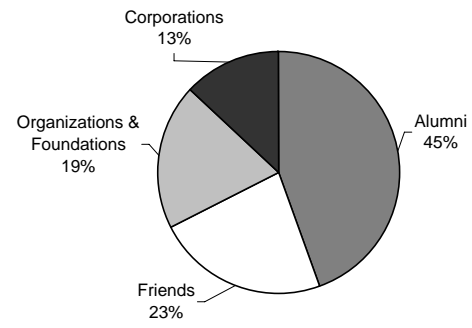
Notes:

1. Monetary gifts are based on actual payments received.
2. The above donations include those received by the University of Toronto and those received by the University of St. Michael's College, University of Trinity College, Victoria University and Massey College.

TOTAL ANNUAL GIFTS RECEIVED: SOURCE OF DONATIONS

May 1, 2005 - April 30, 2006

Total Value: \$ 88,397,297



Part F

Student Awards

Undergraduate Student Support : Admission Scholarships, In-Course Scholarships and Bursaries by Faculty and College 58

OSAP and University of Toronto Advanced Planning for Students program (UTAPS) by Faculty and College 60

Graduate Student Support by Source 62

Graduate Student Support by School of Graduate Studies Division 62

UNDERGRADUATE STUDENT SUPPORT: ADMISSION SCHOLARSHIPS, IN-COURSE SCHOLARSHIPS AND BURSARIES
2005-06

FACULTY / COLLEGE	ADMISSION SCHOLARSHIPS		IN-COURSE SCHOLARSHIPS		BURSARIES	
	Number	Value (\$)	Number	Value (\$)	Number	Value (\$)
Applied Science and Engineering	295	991,497	236	529,836	2,027	5,455,773
Arts and Science, St. George						
Innis College	50	113,125	214	222,902	205	427,308
New College	89	206,581	204	214,980	705	1,454,782
University College	190	346,850	675	655,151	766	1,652,941
Woodsworth College	21	62,500	121	101,594	1,386	2,118,912
St. Michael's College	42	142,000	195	314,404	434	800,686
Trinity College	171	358,627	482	469,983	207	442,947
Victoria College	169	466,711	616	902,205	470	851,724
Dentistry	3	3,253	64	38,895	236	728,922
Law	17	23,778	133	118,887	491	2,212,057
Medicine	4	15,682	295	212,992	820	3,442,646
Radiation Sciences	0	0	3	2,000	102	127,829
Music	23	35,242	102	131,964	173	325,861

UNDERGRADUATE STUDENT SUPPORT: ADMISSION SCHOLARSHIPS, IN-COURSE SCHOLARSHIPS AND BURSARIES(continued)
2005-06

FACULTY / COLLEGE	ADMISSION SCHOLARSHIPS		IN-COURSE SCHOLARSHIPS		BURSARIES	
	Number	Value (\$)	Number	Value (\$)	Number	Value (\$)
Nursing	7	13,296	30	33,870	185	397,823
OISE/UT Undergraduate	13	28,789	23	36,454	355	865,573
Pharmacy	19	14,674	113	89,595	826	1,384,166
Physical Education and Health	10	21,169	65	44,234	81	95,241
Transitional Year Program	0	0	4	1,670	170	392,344
U of T at Mississauga	183	271,253	105	113,999	1,023	2,177,908
U of T at Scarborough	189	222,538	330	314,727	1,429	3,116,034
Total	1,495	\$3,337,566	4,010	\$4,550,342	12,091	\$28,471,477

OSAP AND UNIVERSITY OF TORONTO ADVANCED PLANNING FOR STUDENTS PROGRAM (UTAPS) BY FACULTY AND COLLEGE
2005-06

FACULTY / COLLEGE	OSAP APPLICANTS AS A PERCENTAGE OF		OSAP		UTAPS	
	FULL-TIME ENROLMENT	Number	Value (\$)	Number	Value (\$)	
Applied Science and Engineering	45%	1,643	10,492,168	1,541	4,290,585	
Arts and Science, St. George						
Innis College	33%	430	3,417,229	48	128,300	
New College	39%	1,346	10,437,243	192	517,783	
University College	36%	1,315	10,404,907	185	482,000	
Woodsworth College	44%	1,546	13,537,764	208	471,165	
St. Michael's College	32%	1,102	8,353,114	136	313,750	
Trinity College	32%	424	3,164,611	61	165,700	
Victoria College	36%	1,105	8,508,920	124	325,900	
Dentistry	68%	181	1,670,505	179	651,614	
Law	50%	267	1,713,700	see note 2		
Management	21%	124	1,194,725	see note 2		
Medicine	67%	500	4,827,057	see note 2		
Radiation Sciences	56%	208	2,185,161	23	47,709	
Music	33%	117	926,794	18	30,500	

OSAP AND UNIVERSITY OF TORONTO ADVANCED PLANNING FOR STUDENTS PROGRAM (UTAPS) BY FACULTY AND COLLEGE

(continued)

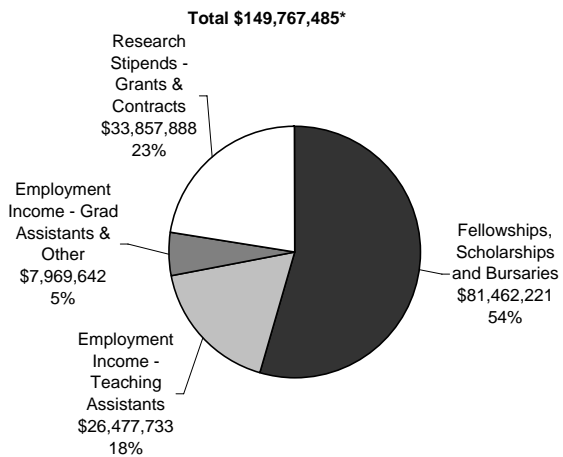
2005-06

FACULTY / COLLEGE	OSAP APPLICANTS AS A PERCENTAGE OF		OSAP		UTAPS	
	FULL-TIME ENROLMENT		Number	Value (\$)	Number	Value (\$)
Nursing	58%		164	1,935,363	77	206,100
OISE/UT Undergraduate	35%		394	3,653,444	110	212,000
OISE/UT Graduate	17%		174	2,151,040	118	397,001
Pharmacy	55%		413	2,419,554	407	930,756
Physical Education and Health	39%		159	1,248,831	10	14,400
School of Graduate Studies	13%		893	9,462,855	642	1,437,379
Transitional Year Program	88%		46	610,741	27	92,155
U of T at Mississauga	37%		2,791	20,191,005	544	1,449,250
U of T at Scarborough	48%		3,821	28,061,536	704	2,076,609
Total	36%		19,163	150,568,267	5,354	14,240,656

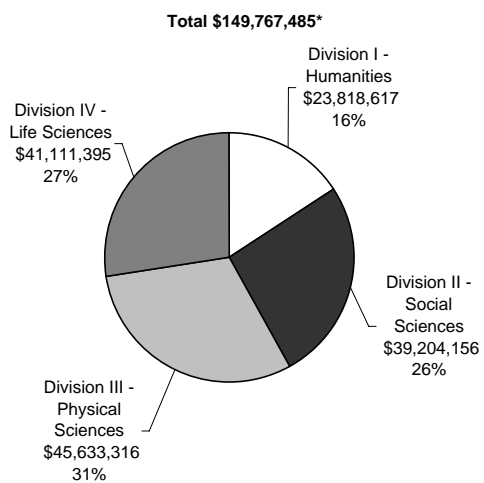
Notes:

1. UTAPS for School of Graduate Studies are also included in the totals shown in Graduate Student Support by Graduate Studies Division.
2. UTAPS at Law, Management and Medicine is distributed as part of their grants programs and are not included above.
3. UTAPS data in this table refers to grants awarded to OSAP recipients only.

GRADUATE STUDENT SUPPORT BY SOURCE
2005-06



GRADUATE STUDENT SUPPORT BY SCHOOL OF GRADUATE STUDIES DIVISION
2005-06



*Does not include updated information on research stipends from affiliated teaching hospitals.

Part G

Faculty and Administrative Staff

Distribution of Full-Time Appointed Tenured/Tenure
Stream Faculty by Major Division and Main Appointment 64

Distribution of Full-Time Tenured/Tenure Stream
Faculty by Rank and Gender 65

Age Distribution of Tenured/Tenure Stream Faculty 65

Distribution of Full and Part-Time ($\geq 25\%$) Academic
Staff and Librarians by Rank and Gender 66

Distribution of Full and Part-Time Administrative and
Union Staff 68

Operating Fund Full-Time Equivalent Staff 69

**DISTRIBUTION OF FULL-TIME APPOINTED TENURED/TENURE
STREAM FACULTY BY MAJOR DIVISION AND MAIN APPOINTMENT**
All Sources of Funding
October 2005

DIVISION	PERCENT			TOTAL
	MALE	FEMALE	FEMALE	
Applied Science and Engineering	176	14	7.4%	190
Architecture, Landscape, and Design	12	1	7.7%	13
Arts and Science*	461	182	28.3%	643
Dentistry	33	6	15.4%	39
Education (OISE/UT)	53	76	58.9%	129
Forestry	12	2	14.3%	14
Information Studies	5	7	58.3%	12
Law	30	18	37.5%	48
Management**	60	11	15.5%	71
Medicine	112	67	37.4%	179
Music	17	10	37.0%	27
Nursing	2	17	89.5%	19
Pharmacy	17	10	37.0%	27
Physical Education and Health	8	5	38.5%	13
School of Graduate Studies	13	4	23.5%	17
Social Work	8	14	63.6%	22
U of T at Mississauga	140	54	27.8%	194
U of T at Scarborough	108	47	30.3%	155
Total	1,267	545	30.1%	1,812

*Arts & Science includes Transitional Year Program and the St. George campus colleges (Innis, New, University, Woodsworth, St. Michael's, Trinity, Victoria).

**Management only contains Joseph L. Rotman School of Management.

**DISTRIBUTION OF FULL-TIME TENURED/TENURE STREAM FACULTY
BY RANK AND GENDER**

All Sources of Funding
October 2005

RANK	PERCENT		TOTAL
	MALE	FEMALE	
Professor	649	164	813
Associate Professor	361	216	577
Assistant Professor	252	162	414
Assistant Professor (conditional)	5	3	8
Total	1,267	545	1,812

Note: Includes Faculties of Medicine and Dentistry.

AGE DISTRIBUTION OF TENURED/TENURE STREAM FACULTY

October 2005

RANK	AVERAGE AGE
Professor	54.7
Associate Professor	47.5
Assistant Professor	37.2
Assistant Professor (conditional)	30.9

Note: Total number of Full-time Tenured/Tenure Stream Faculty = 1,812.

DISTRIBUTION OF FULL AND PART-TIME (>=25%) ACADEMIC STAFF AND LIBRARIANS BY RANK AND GENDER

All Sources of Funding
October 2005

RANK	FULL-TIME			Total
	Male	Female	Percent Female	
Professor	781	187	19.3%	968
Associate Professor	481	268	35.8%	749
Assistant Professor	342	242	41.4%	584
Assistant Professor (cond)	5	3	37.5%	8
Lecturer (medical)	1	3	75.0%	4
Instructor	9	6	40.0%	15
Senior Lecturer/Lecturer	101	132	56.7%	233
Senior Tutor/Tutor	12	13	52.0%	25
Sub-Total	1,732	854	33.0%	2,586
Librarian	40	93	69.9%	133
Total	1,772	947	34.8%	2,719

RANK	PART-TIME			Total
	Male	Female	Percent Female	
Professor	36	12	25.0%	48
Associate Professor	40	16	28.6%	56
Assistant Professor	39	40	50.6%	79
Assistant Professor (cond)	0	0	---	0
Lecturer (medical)	3	3	50.0%	6
Instructor	0	1	100.0%	1
Senior Lecturer/Lecturer	32	48	60.0%	80
Senior Tutor/Tutor	4	2	33.3%	6
Sub-Total	154	122	44.2%	276
Librarian	3	9	75.0%	12
Total	157	131	45.5%	288

DISTRIBUTION OF FULL AND PART-TIME (>=25%) ACADEMIC STAFF AND LIBRARIANS BY RANK AND GENDER(continued)

All Sources of Funding
October 2005

RANK	TOTAL			Total
	Male	Female	Percent Female	
Professor	817	199	19.6%	1,016
Associate Professor	521	284	35.3%	805
Assistant Professor	381	282	42.5%	663
Assistant Professor (cond)	5	3	37.5%	8
Lecturer (medical)	4	6	60.0%	10
Instructor	9	7	43.8%	16
Senior Lecturer/Lecturer	133	180	57.5%	313
Senior Tutor/Tutor	16	15	48.4%	31
Sub-Total	1,886	976	34.1%	2,862
Librarian	43	102	70.3%	145
Total	1,929	1,078	35.8%	3,007

Notes:

1. Includes Faculty of Medicine and Dentistry.
2. Includes both tenured/tenure stream and non-tenure stream professorial staff.
3. Starting in July 2005 there was a reclassification of those previously reported under the teaching stream (Sr Lecturers/Lecturers). Those on contracts of less than 12 months are now classified as non-academics, CUPE 3902 Unit 3, and are excluded from the faculty counts.

DISTRIBUTION OF FULL AND PART-TIME ADMINISTRATIVE AND UNION STAFF

September 2005

EMPLOYEE GROUP	FULL-TIME			PART-TIME			ALL		
	Male	Female	Total	Male	Female	Total	Male	Female	Total
Non-Unionized Employees									
ESL Instructors	10	17	27	0	0	0	10	17	27
Research Associates	163	77	240	14	11	25	177	88	265
USW-exempt Admin staff*	296	469	765	5	29	34	301	498	799
Total non-unionized employees	469	563	1,032	19	40	59	488	603	1,091
Unionized Employees									
89 Chestnut St. Hospitality Workers	46	34	80	0	0	0	46	34	80
Administrative staff*	914	2046	2,960	47	214	261	961	2260	3,221
Child Care Workers	4	26	30	0	5	5	4	31	35
Library Workers	56	115	171	6	11	17	62	126	188
Operating Engineers and Building Management Systems Technicians	81	2	83	0	0	0	81	2	83
Police	31	16	47	0	0	0	31	16	47
Research Associates & Officers	1	7	8	1	7	8	2	14	16
Service Workers	348	232	580	16	8	24	364	240	604
Sessional Lecturers	0	0	0	364	310	674	364	310	674
Teaching Assistants and OISE Graduate Assistants	0	0	0	1,868	1,616	3,484	1,868	1,616	3,484
Trades and Services**	63	1	64	0	0	0	63	1	64
Total unionized employees	1,544	2,479	4,023	2,302	2,171	4,473	3,846	4,650	8,496
Total	2,013	3,042	5,055	2,321	2,211	4,532	4,334	5,253	9,587

* Excludes Non University of Toronto Departments.

** Trades and Services includes Carpenters, Electricians, Machinists and Locksmiths, Painters, Plumbers, Steam fitters and Sprinkler fitters, Sheet Metal Workers, Stage Hands.

OPERATING FUND FULL-TIME EQUIVALENT STAFF
2006-07 Budget

DIVISION	ACADEMIC	NON-ACADEMIC*
Applied Science and Engineering	228.28	191.43
Architecture, Landscape, and Design	24.63	16.70
Arts & Science**	880.71	473.80
Colleges***	20.77	106.35
Dentistry	84.47	161.66
Forestry	15.08	7.00
Graduate Centres and Institutes	12.57	20.65
Information Studies	16.90	44.56
Law	52.96	64.42
Management	86.90	115.70
Medicine	753.37	432.15
Mississauga, University of Toronto at	252.80	114.05
Music	46.94	29.34
Nursing	42.30	21.00
OISE/UT	170.46	144.35
Pharmacy	42.45	30.85
Physical Education and Health	15.85	7.70
Scarborough, University of Toronto at	240.52	86.07
School of Continuing Studies	0.00	66.60
School of Graduate Studies	6.60	43.50
Social Work	24.00	11.20
Transitional Year Program	10.00	2.50
Subtotal	3,028.56	2,191.58
Academic Services	5.00	510.91
Campus and Student Services	12.93	315.57
Central Administration	11.80	794.17
Facilities and Services	0.00	760.70
Other Academic Costs	0.19	1.00
Grand Total	3,058.48	4,573.93

*Librarians, Admin and Union staff are included in the non-academic group.

**Arts and Science includes Innis, New, St. Michael's, University College Programs related to Arts & Science.

***Colleges include Innis, Munk Centre, New, University, Woodsworth programs and resources independent of Arts & Science

Part H Library

Library Collections	72
Number of Loans	73
Number of Computers in the Library	73
Digital Library E-Resources	73
Number of Electronic Articles Downloaded	74

LIBRARY COLLECTIONS

2005-06

There are 32 libraries in the University of Toronto Library System.

COLLECTIONS *	CENTRAL LIBRARIES	LOCAL LIBRARIES	SCARBOROUGH/ MISSISSAUGA	FEDERATED/ AFFILIATED	DIGITAL LIBRARY**	TOTAL
Books	7,482,845	1,081,402	636,240	1,300,974	299,121	10,800,582
Cartographic Materials	243,705	8	36,531	27		280,271
CD-ROM (Bibliog & Text)	3,710	1,795	0	30		5,535
Computer Data Files	486,919	846	247	588		488,600
Films & Videos	24,555	1,989	719	3,686		30,949
Graphic Materials	254,497	372,610	63,374	71,624		762,105
Microforms	5,124,085	133,283	38,177	129,778		5,425,323
Music Scores		64,127	1,003	126		65,256
Sound Recording	9,871	182,126	4,045	3,694		199,736
Other Formats	34,444	25,617	621	669	4	61,355
Total	13,664,631	1,863,803	780,957	1,511,196	299,125	18,119,712
Current Serials	20,591	5,540	2,838	2,611	37,459	69,039
Manuscripts (Metres)	11,564	162	0	151		11,877

* Materials on transfer from Central to Local Libraries (previously included in Central Libraries' counts) are shown in the counts for Local Libraries where they are located. Bound volumes of subscriptions are included in the Book counts.

** Electronic resources (Books & Journals).

NUMBER OF LOANS

2005-06

Central Libraries	
Robarts Library	1,667,203
Gerstein Science Information Centre	283,924
OISE/UT Library	175,944
Fisher Library/Archives	16,722
Media Commons *	94,367
Branch Libraries	159,878
Sub-Total	2,398,038
Local Libraries	467,405
UTMississauga Library	232,971
UTScarborough Library	88,272
Federated/Affiliated Libraries*	619,809
Total	3,806,495

* Media Commons includes Audio Visual Library and Microtext

NUMBER OF COMPUTERS IN THE LIBRARY

April 30, 2006

Computers in the Network	2,330
Stand-Alone PC's	76
VT Terminals	0

DIGITAL LIBRARY E-RESOURCES

April 30, 2006

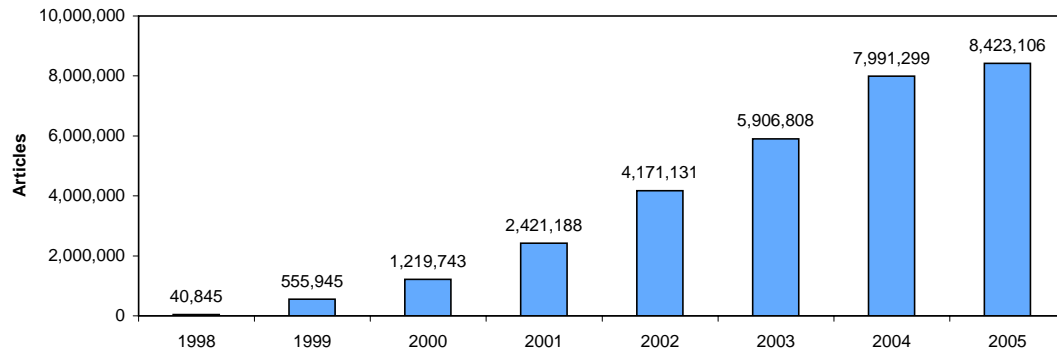
	LICENSED**	PUBLIC***	TOTAL
e-Media	5	4	9
Journal Collections	11	0	11
Journals Indexes and Abstracts	641	89	730
Journals	30,201	3,153	33,354
PDA/Handheld	3	8	11
Reference Sources	855	115	970
Books	291,568	7,553	299,121
Newspapers and News Services	2,332	58	2,390
Total	325,616	10,980	336,596

** These items are available on the Internet for use by anyone.

*** These items are available on the Internet for use by anyone.

For current figures, see <http://main.library.utoronto.ca/eir/EIRwhatsnew.cfm>

NUMBER OF ELECTRONIC ARTICLES DOWNLOADED
1998-2005



Note: Data for 1998 to 2005 are adjusted to reflect revised data and data not previously available from publishers, aggregators and systems.

Part I

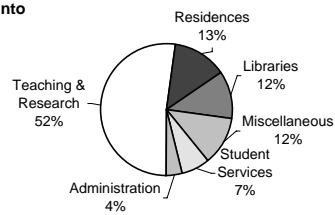
Physical Plant

Usage of Assignable Space	76
Number of Buildings and Square Metres	77
Area of U of T Properties	78
Number of Parking Spaces	78
Number of Public Assembly Facilities	78
Number of University of Toronto Students in Residence	79

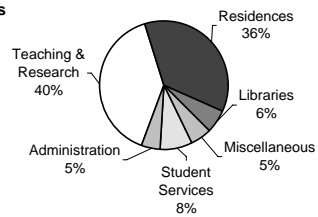
USAGE OF ASSIGNABLE SPACE

2005-06

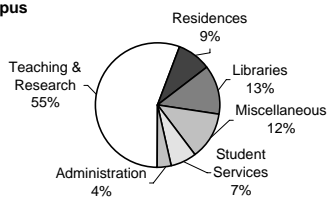
**University of Toronto
(All Campuses)**



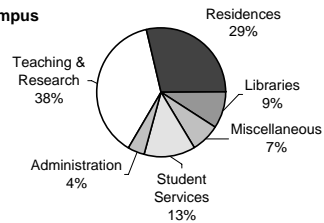
Mississauga Campus



St. George Campus



Scarborough Campus



Note: **Student Services** includes: Athletics, Food Services, Bookstore and Merchandising and Health Services.
Miscellaneous includes: Plant Maintenance, Assembly & Exhibition Facilities, Common Use and Student Activity and Other University Facilities.
Teaching and Research includes: Classrooms, Teaching and Research Laboratories, Academic Services, Health Science Clinic Facilities, Central Services and Media Services.

NUMBER OF BUILDINGS AND SQUARE METRES

2005-06 as at September 2006

	NUMBER OF BUILDINGS	NET ASSIGNABLE SQUARE METRES	NET SQUARE METRES	GROSS SQUARE METRES
University				
St. George	115	545,883	880,579	1,027,071
Leased St. George	5	3,052	3,786	4,255
Scarborough	25	55,537	86,439	101,010
Mississauga	44	72,181	123,895	140,171
Total University	189	676,653	1,094,699	1,272,507
Federated Colleges and Massey	53	100,388	150,412	189,205
Grand Total	242	777,041	1,245,111	1,461,712

Note: **Net Assignable Square Metres** is the sum of all areas on all floors of the building assigned to, or available for assignment to, an occupant, including every type of space functionality used by an occupant.

Net Square Metres is the sum of all areas on all floors of the building, both assigned (see definition above) and non-assigned (ie corridors, stairs, mechanical rooms etc.)

Gross Area Square Metres is the sum of all floors areas included within the outside faces of exterior walls, which have floor surfaces.

AREA OF U OF T PROPERTIES

2005-06

	HECTARES
CAMPUSES	
Downtown Campus	
St. George	51.3
Federated Colleges and Massey	17.3
Total Downtown Campus	68.6
Scarborough	121.5
Mississauga	90.2
Total Campuses	280.3
OFF CAMPUS	
David Dunlap Observatory	76.9
Aerospace	11.9
Joker's Hill	346.0
Total Off Campus	434.8
Grand Total	715.1

Notes:

1. Excludes Glendon and Huron/Sussex.
2. Total Downtown Campus includes St. George, Federated Colleges and Massey.

NUMBER OF PARKING SPACES

2005-06

	NUMBER OF SPACES
St. George	2,100
Scarborough	3,213
Mississauga	2,775
Total	8,088

NUMBER OF PUBLIC ASSEMBLY FACILITIES

2005-06

	NUMBER OF FACILITIES	SEATING CAPACITY
St. George Lecture Theatres / Hall*	44	10,294
St. George Auditorium	4	3,400
Dining Rooms and Cafeterias*	32	4,095
Varsity Arena	1	4,100

* Including Federated Colleges.

NUMBER OF UNIVERSITY OF TORONTO STUDENTS IN RESIDENCE
2005-06

	NUMBER OF FIRST-YEAR STUDENTS	NUMBER OF STUDENTS	TOTAL SPACES
University of Toronto Residences			
St. George Including Federated Universities			
89 Chestnut	504	987	1,025
Charles Street Apartments*	0	732	742
Graduate House	0	434	434
Innis College	198	326	326
New College	490	868	877
St. Michael's College	260	737	747
Trinity College	206	429	429
University College	422	718	718
Victoria University	367	772	772
Woodsworth College	208	368	368
Total St. George	2,655	6,371	6,438
University of Toronto Mississauga			
Graduate & Family Housing*	0	185	185
Undergraduate Housing	435	835	835
Total U of T at Mississauga	435	1,020	1,020
University of Toronto Scarborough	360	765	765
Total University of Toronto Residences	3,450	8,156	7,458
Independent Campus Residences			
Campus Co-Op	12	203	286
Knox College	2	104	104
Massey College	0	61	61
Neil-Wycik Co-Operative**	0	59	781
St. Vladimir Institute	0	27	46
Tartu College	38	361	458
Wycliffe College	1	72	73
Total Independent Residences	53	887	1,809
Grand Total	3,503	9,043	9,267

* Premises house students and their family. Some families may include 2 students.

** Premises house mainly Ryerson students.

Notes:

1. As of November 1, 2005.

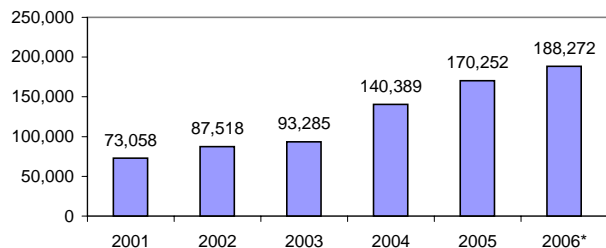
2. Includes Toronto School of Theology students.

Part J

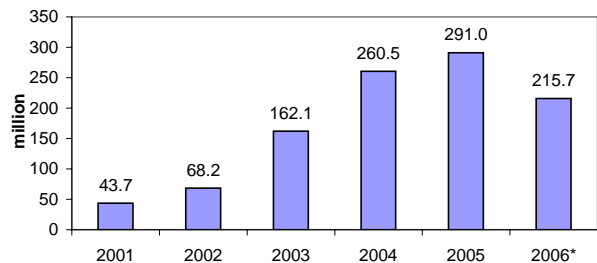
Computing and Communications

Number of UTORmail Accounts at Year End	82
Number of Messages Delivered by UTORmail Post Office	82
Number of Web Transactions	82
Institutional Internet Dial-in Services	
a) Dial-in Modem	83
b) U of T/Bell Sympatico High Speed Edition (HSE)	83
c) Virtual Private Network (VPN)	83
Campus Wireless Network	83
Usage of Electronic Student Services	84

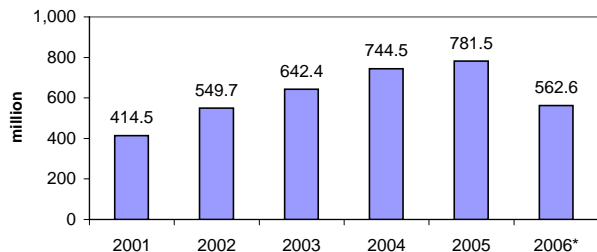
NUMBER OF UTORmail ACCOUNTS AT YEAR END
2001-2006



NUMBER OF MESSAGES DELIVERED BY UTORmail POST OFFICE
2001-2006
(In Millions)



NUMBER OF WEB TRANSACTIONS
For the institutional server www.utoronto.ca
2001-2006
(In Millions)



*Note: 2006 figures represent counts up to September 30, 2006.
2001-2005 figures cover the period from January 1 to December 31 of each year.

INSTITUTIONAL INTERNET DIAL-IN SERVICES
2001-2006

Dial-in Modem
Up to 56,000 bits per second

Date	Phone Lines	Active Users	Calls per Week
November 2001	597	9,900	92,000
November 2002	413	7,300	68,000
October 2003	333	5,600	52,000
October 2004	255	3,900	36,000
October 2005	124	2,400	21,000
October 2006	89	1,500	12,000

U of T/Bell Sympatico High Speed Edition (HSE)*
Up to 960,000 bits per second

Date	Using UofT Network Address
November 2001	419
November 2002	624
October 2003	468
October 2004	275
October 2005	160
October 2006	115

Note: This service is being phased out. It may remain operational for an indeterminate time but Bell does not provide any service guarantees and may discontinue the feature at any time.

Virtual Private Network (VPN)*

Provides 'direct' access to the UofT network.

Date	Number of Users
December 2004	0
December 2005	610
October 2006	1,019

*Service first became available in January 2005.
The VPN service replaces the UofT/Bell Sympatico HSE.

CAMPUS WIRELESS NETWORK*
2001-2006

Date	Buildings	Access Points	Sessions per Week
November 2001	8	56	500
November 2002	15	118	4,500
October 2003	19	143	9,800
October 2004	24	244	14,000
October 2005	41	320	25,000
October 2006	66	495	42,000

*Service first became available in September 2001.

USAGE OF ELECTRONIC STUDENT SERVICES

September 1, 2005 to August 31, 2006

ACTIVITY	ROSI STUDENT WEB SERVICES rosi.utoronto.ca
Accessing the System	
Successful attempt to login	7,367,316
Unsuccessful attempt to login	160,387
Access suspended	8,608
Change PIN	63,325
Unsuccessful attempt to change PIN	2,178
Setup completed for PIN reactivation	27,399
Successful attempt to reactivate PIN	33,141
Unsuccessful attempt to reactivate PIN	9,662
Suspend PIN reactivation	5,324
Maintaining Personal Information	
Add bank information	1,174
Cancel bank information	42
Add new address	13,979
Change address	66,810
Add new contact information	3,918
Change contact information	2,723
Delete contact information	291
Add new telephone number	4,480
Change telephone number	5,869
Change e-mail address	65,462
Choosing/Changing Academic Options	
Add academic activity	667,862
Drop academic activity	338,977
Modify academic activity	228,884
Add waitlisted academic activity	52,975
Drop waitlisted academic activity	16,915
Modify waitlisted academic activity	1,996
List courses	3,535,661
Accept Subject POST	8,965
Add new Subject POST	51,869
Change Subject POST	9,363
Delete Subject POST	34,776
Cancel invited registration	301
Cancel registration/Deregister	7,256
Confirm graduation request	10,542

USAGE OF ELECTRONIC STUDENT SERVICES (continued)
September 1, 2005 to August 31, 2006

ACTIVITY	ROSI STUDENT WEB SERVICES rosi.utoronto.ca
Viewing Financial Information	
View Financial Account - Invoice	40,148
View Financial Account - Detail	16,738
Requesting/Paying for Transcripts	
Request transcript, charged to account	13,199
Request transcript, paid electronically	30,973
Request transcript pending payment	36,671
Create electronic transcript invoice	33,438
Pay electronic transcript invoice	26,890
Unsuccessful electronic payment	2,758
Participating in Campus Life	
Opt out of SAC Health Insurance	969
Submit an electronic vote	9,823

**Prepared by
The Office of the Vice-Provost, Planning and Budget
University of Toronto**

**Printed in Canada
by University of Toronto Press
2006**