

# FACTS & FIGURES

---

# 2007



UNIVERSITY OF  
TORONTO

**Facts and Figures** is prepared annually by the Office of the Assistant Vice-President, Government, Institutional and Community Relations. **Facts and Figures** provides answers to some of the most frequently asked questions about the University. It is designed and organized to serve as a useful and reliable source of reference information from year to year.

The reader of **Facts and Figures** should take care when attempting to use the enclosed information comparatively. While some definitions are common to other universities, many others are not. Our Office maintains some comparative databases and has access to others. Please contact us for assistance in using Facts and Figures comparatively.

Each year we try to improve **Facts and Figures** to make it as useful as possible. We are always grateful for suggestions for improvement.

**Facts and Figures** can also be accessed on the Internet at <http://www.utoronto.ca/aboutuoft/quickfacts/factsandfigures.htm>

Other Official Publications of the University can be found on the UofT accountability website:  
<http://www.utoronto.ca/aboutuoft/accountabilityreports.htm>

Corinne Pask-Aubé was the manager of **Facts and Figures** for 2007. Corinne can be reached through e-mail at [corinne.pask@utoronto.ca](mailto:corinne.pask@utoronto.ca).

Contributors include: Brian Armstrong, Michelle Broderick, Mary Ellen Caskenette, Arlene Clement, Hung Sun Chan, Helen Choy, Aytan Farrokhyar, Phil Harper, Rick Haywood, Lari Langford, Helen Lasthiotakis, Maureen Lynham, Barry Murphy, Alex Nishri, Pascal Paquette, José Sigouin, and George Taylor .

**Daniel Atlin**

**Assistant Vice-President, Government, Institutional  
and Community Relations**

Room 5, Simcoe Hall  
27 King's College Circle  
Toronto, Ontario  
M5S 1A1

<http://www.universityrelations.utoronto.ca/gr.htm>

# CONTENTS

<b>Part A General</b>	3
1. Organization of Senior Administration	
2. Major Academic Divisions	
3. Degrees, Diplomas and Certificates Offered by Division	
<b>Part B Finances</b>	15
<b>University of Toronto Financial Statements</b>	
1. Statement of Operations	
2. Changes in Surplus/Deficit	
3. Operating Fund Expense Summary	
4. Operating Fund: Academic Expense Summary	
5. Restricted Funds	
<b>University of Toronto Budget Reports</b>	
6. Expense Budget Summary	
7. Academic Costs	
<b>Part C Research</b>	25
1. Research Population	
2. Revenue from Externally Sponsored Research	
3. Academic Linkages between the University of Toronto and International Institutions	
4. Technology Transfer Activities:	
a) Invention Disclosures	
b) Spin-off Companies	
c) Industrial Contracts and Grants	
d) Government Funding Leveraged by Industrial Collaboration	
<b>Part D Students</b>	31
1. Enrolment by Campus and Faculty/College	
2. Enrolment by Program Mix	
3. Enrolment by Age and Gender Balance	
4. International Student Enrolment by Geographic Origin	
5. International Student Enrolment by Geographic Origin: Five-Year Trend	
6. Ten-Year Enrolment Trends, All Students	
7. Gender Balance of Graduate and Undergraduate Enrolments by Field of Study	
8. Undergraduate Intake by Faculty	
9. Graduate Intake by Faculty	
10. Total Intake	
11. Degrees Awarded by Field of Study and Gender	
12. Tuition Fee Schedule for Domestic and International Students	
13. Tuition Fee Schedule for Self-Funded Programs	
<b>Part E Graduates</b>	53
1. Graduates by Region	
2. Number of Degree Affiliations by College or Faculty	
3. Total Annual Gifts Received	
4. Total Annual Gifts Received: Source of Donations	

<b>Part F Student Awards</b>	59
1. Undergraduate Student Support : Admission Scholarships, In Course Scholarships and Bursaries by Faculty and College	
2. OSAP and University of Toronto Advanced Planning for Students Program (UTAPS) by Faculty and College	
3. Graduate Student Support by Source	
4. Graduate Student Support by S.G.S. Division	
<b>Part G Faculty and Administrative Staff</b>	65
1. Distribution of Full-Time Appointed Tenured/Tenure Stream Faculty by Major Division and Main Appointment	
2. Distribution of Full-Time Tenured/Tenure Stream Faculty by Rank and Gender	
3. Age Distribution of Tenured/Tenure Stream Faculty	
4. Distribution of Full and Part-Time (>=25%) Academic Staff and Librarians by Rank and Gender	
5. All Faculty with Teaching/Research Responsibilities	
6. Distribution of Full and Part-Time Administrative and Union Staff	
7. Operating Fund Full-Time Equivalent Staff	
<b>Part H Library</b>	73
1. Library Collections	
2. Number of Loans	
3. Number of Computers in the Library	
4. Digital Library E-Resources	
5. Number of Electronic Articles Downloaded	
<b>Part I Physical Plant</b>	77
1. Usage of Assignable Space	
2. Number of Buildings and Square Metres	
3. Area of U of T Properties	
4. Number of Parking Spaces	
5. Number of Public Assembly Facilities	
6. Number of University of Toronto Students in Residence	
<b>Part J Computing and Communications</b>	83
1. Number of UTOEmail Accounts at Year End	
2. Number of Messages Delivered by UTOEmail Post Office	
3. Number of Web Transactions	
4. Institutional Internet Dial-in Services	
a) Dial-in Modem	
b) Virtual Private Network (VPN)	
5. Campus Wireless Network	
6. Usage of Electronic Student Services	

# Part A

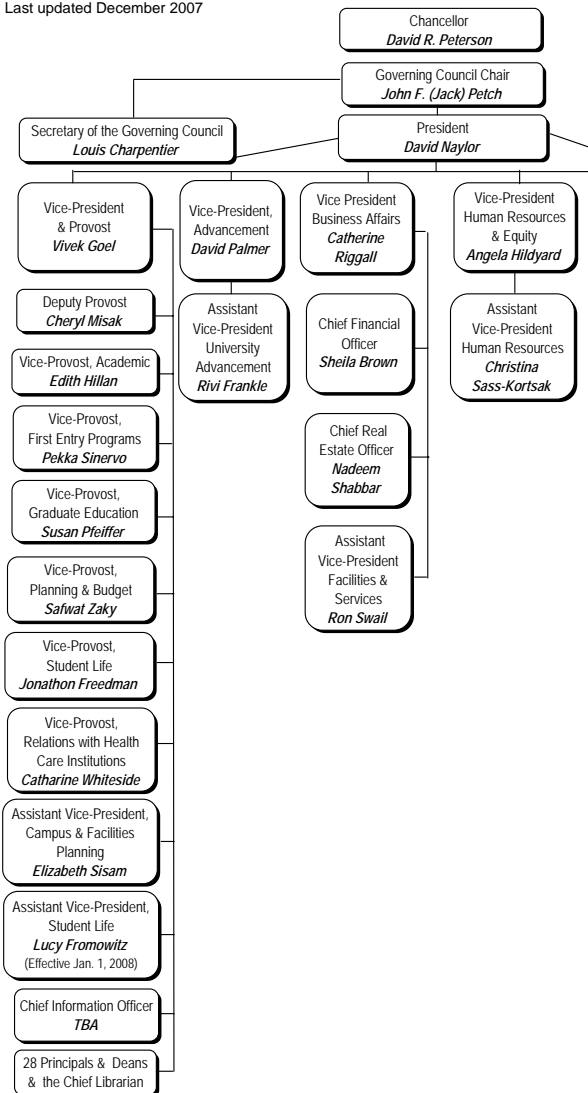
## **General**

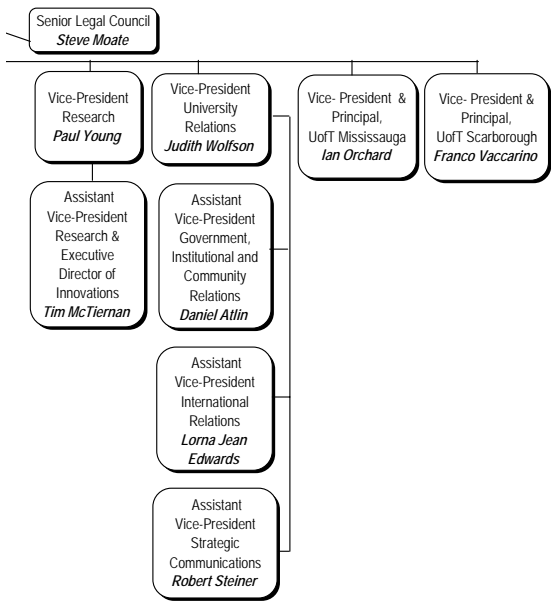
Organization of Senior Administration	4
Major Academic Divisions	6
Degrees, Diplomas and Certificates Offered by Division	10

# ORGANIZATION OF SENIOR ADMINISTRATION

2007-08

Last updated December 2007





## **MAJOR ACADEMIC DIVISIONS**

2007-08

### **Faculty of Applied Science and Engineering**

Aerospace Studies, Institute for  
Chemical Engineering and Applied Chemistry, Department of  
Civil Engineering, Department of  
Edward S. Rogers Sr. Electrical and Computer Engineering,  
Department of  
Engineering Science, Division of  
Environmental Engineering and Energy Systems, Division of  
Materials Science and Engineering, Department of  
Mechanical and Industrial Engineering, Department of

### **Faculty of Architecture, Landscape, and Design**

### **Faculty of Arts and Science (St. George Campus)**

Anthropology, Department of  
Art, Department of  
Astronomy & Astrophysics, Department of  
Cell and Systems Biology, Department of  
Chemistry, Department of  
Cinema Studies Institute  
Classics, Department of  
Comparative Literature, Centre for  
Computer Science, Department of  
East Asian Studies, Department of  
Ecology and Evolutionary Biology, Department of  
Economics, Department of  
English, Department of  
French, Department of  
Geography, Department of  
Geology, Department of  
Germanic Languages & Literatures, Department of  
History, Department of  
History & Philosophy of Science & Technology, Institute for  
Italian Studies, Department of  
Linguistics, Department of  
Mathematics, Department of  
Medieval Studies, Centre for  
Near & Middle Eastern Civilizations, Department of  
Philosophy, Department of  
Physics, Department of  
Political Science, Department of  
Psychology, Department of  
Religion, Department of  
Sexual Diversity Studies, Mark S. Bonham Centre for  
Slavic Languages & Literatures, Department of  
Sociology, Department of  
Spanish & Portuguese, Department of  
Statistics, Department of  
Theoretical Astrophysics, Canadian Institute for (CITA)  
Women's Studies and Gender Studies, Institute for



**Faculty of Arts and Science - Colleges (St. George Campus)**

Constituent Colleges:

Innis College  
New College  
University College  
Woodsworth College

Federated Colleges:

St. Michael's College  
Trinity College  
Victoria College

**School of Continuing Studies**

**Faculty of Dentistry**

**Faculty of Forestry**

**School of Graduate Studies**

Division I - Humanities  
Division II - Social Sciences  
Division III - Physical Sciences  
Division IV - Life Sciences  
Criminology, Centre for  
Drama, Graduate Centre for the Study of  
Industrial Relations and Human Resources, Centre for

**Faculty of Information Studies**

**Faculty of Law**

**Joseph L. Rotman School of Management**

**Faculty of Medicine**

Anesthesia, Department of  
Banting and Best Department of Medical Research  
Biochemistry, Department of  
Family and Community Medicine, Department of  
Health Policy, Management and Evaluation, Department of  
Immunology, Department of  
Laboratory Medicine and Pathobiology, Department of  
Medical Biophysics, Department of  
Medical Imaging, Department of  
Medicine, Department of  
Molecular Genetics, Department of  
Nutritional Sciences, Department of  
Obstetrics and Gynaecology, Department of  
Occupational Science and Occupational Therapy, Department of  
Ophthalmology and Vision Sciences, Department of  
Otolaryngology - Head and Neck Surgery, Department of

**MAJOR ACADEMIC DIVISIONS** (continued)  
2007-08

**Faculty of Medicine** (continued)

Paediatrics, Department of  
Pharmacology and Toxicology, Department of  
Physical Therapy, Department of  
Physiology, Department of  
Psychiatry, Department of  
Public Health Sciences, Department of  
Radiation Oncology, Department of  
Rehabilitation Science, Department of  
Speech-Language Pathology, Department of  
Surgery, Department of

**Multi-Faculty Centres and Institutes**

Biomaterials and Biomedical Engineering, Institute of  
Diaspora and Transnational Studies, Centre for  
Environment, Centre for  
European, Russian and Eurasian Studies, Centre for

**Faculty of Music**

**Lawrence S. Bloomberg Faculty of Nursing**

**Ontario Institute for Studies in Education (OISE)**

Adult Education and Counselling Psychology, Department of  
Child Study, Institute of  
Curriculum, Teaching and Learning, Department of  
Human Development and Applied Psychology, Department of  
Sociology and Equity Studies in Education, Department of  
Theory and Policy Studies in Education, Department of

**Leslie L. Dan Faculty of Pharmacy**

**Faculty of Physical Education and Health**

**School of Public Policy and Governance**

**Factor-Inwentash Faculty of Social Work**

**Transitional Year Program**

## **MAJOR ACADEMIC DIVISIONS** (continued)

2007-08

### **University of Toronto at Mississauga**

Anthropology, Department of  
Biology, Department of  
Chemical and Physical Sciences, Department of  
Communication and Culture, Institute of  
Economics, Department of  
English and Drama, Department of  
Geography, Department of  
Historical Studies, Department of  
Language Studies, Department of  
Management, Department of  
Mathematical and Computational Sciences, Department of  
Philosophy, Department of  
Political Science, Department of  
Professional Graduate Program Centre  
Psychology, Department of  
Sociology, Department of

### **University of Toronto at Scarborough**

Biological Sciences, Department of  
Computer & Mathematical Sciences, Department of  
Humanities, Department of  
Management, Department of  
Physical & Environmental Sciences, Department of  
Psychology, Department of  
Social Sciences, Department of

### **Woodsworth College**

Notes:

Only Institutes in the EDU A and EDU B categories are included.

**An EDU A Institute** may enrol students, has faculty appointing rights, and requires Governing Council approval.

**An EDU B Institute** may enrol students, has no (or limited) faculty appointment rights, and requires Governing Council approval.

## DEGREES, DIPLOMAS AND CERTIFICATES OFFERED BY DIVISION

2007-08

### Faculty of Applied Science and Engineering:

#### **Undergraduate**

Bachelor of Applied Science B.A.Sc.

#### **Graduate**

Master of Applied Science M.A.Sc.

Master of Engineering M.Eng.

Master of Engineering in Advanced Design and Manufacturing M.Eng.D.M.

Master of Engineering in Telecommunications M.Eng.Tel.

Doctor of Philosophy Ph.D.

### Faculty of Architecture, Landscape, and Design:

#### **Graduate**

Master of Architecture M.Arch.

Master of Landscape Architecture M.L.A.

Master of Urban Design M.U.D.

### Faculty of Arts and Science, St. George Campus:

#### **Undergraduate**

Honours Bachelor of Arts H.B.A.

Honours Bachelor of Science H.B.Sc.

Bachelor of Commerce B.Com.

#### **Graduate**

Master of Arts (tri-campus) M.A.

Master of Science (tri-campus) M.Sc.

Master of Financial Economics (with Rotman School of Management) M.F.E.

Master of Science in Planning M.Sc.Pl.

Master of Urban Design Studies M.U.D.S.

Master of Visual Studies M.V.S.

Doctor of Philosophy (tri-campus) Ph.D.

### Faculty of Dentistry:

#### **Undergraduate**

Doctor of Dental Surgery D.D.S.

Certificate of Qualification in Dentistry Cert.Q.P.Dent.

#### **Graduate**

M.Sc./Dental Specialty Program M.Sc.

Doctor of Philosophy Ph.D.

Doctor of Dentistry and Doctor of Philosophy combined program D.D.S./Ph.D.

### Faculty of Forestry:

#### **Graduate**

Master of Forest Conservation M.F.C.

Master of Science in Forestry M.Sc.F.

Doctor of Philosophy Ph.D.

## DEGREES, DIPLOMAS AND CERTIFICATES OFFERED BY DIVISION

(continued)

2007-08

### School of Graduate Studies:

#### **Graduate**

Master of Arts	M.A.
Master of Science	M.Sc.
Master of Industrial Relations and Human Resources	M.I.R.H.R.
Doctor of Philosophy	Ph.D.

### Faculty of Information Studies:

#### **Graduate**

Master of Information Studies	M.I.St.
Master of Museum Studies	M.M.St.
Doctor of Philosophy	Ph.D.
Graduate Diploma of Advanced Study in Information Studies	G.Dip.ISt

### Faculty of Law:

#### **Undergraduate**

Juris Doctor	J.D.
Juris Doctor and Certificate in Environmental Studies	J.D. /certificate in Env. Studies

#### **Graduate**

Master of Laws	LL.M.
Masters in Studies in Law	M.S.L.
Doctor of Juridical Science	S.J.D.

### Joseph L. Rotman School of Management:

#### **Graduate**

Omnium Global Executive Master of Business Administration	E.M.B.A.
Master of Business Administration	M.B.A.
Master of Finance	M.F.
Master of Financial Economics (with Arts & Science)	M.F.E.
Doctor of Philosophy	Ph.D.

### Faculty of Medicine:

#### **Undergraduate**

Doctor of Medicine	M.D.
Bachelor of Science, Medical Radiation Sciences	B.Sc.Med.Rad.Sc.

**DEGREES, DIPLOMAS AND CERTIFICATES OFFERED BY DIVISION**

(continued)

2007-08

**Faculty of Medicine (continued):****Graduate**

Master of Science	M.Sc.
Master of Science in Biomedical Communications	M.Sc.BMC
Master of Health Science	M.H.Sc.
Master of Management of Innovation	M.M.I.
Master of Science in Community Health	M.Sc.C.H.
Master of Science in Occupational Therapy	M.Sc.O.T.
Master of Science in Physical Therapy	M.Sc.P.T.
Master of Science in Physical Therapy and Master of Science in Rehabilitation Science	M.Sc.P.T./M.Sc.
Doctor of Philosophy	Ph.D.
Doctor of Medicine and Doctor of Philosophy	M.D./Ph.D.
Diploma in Community Health	Dip.C.H.

**Post Doctoral**

Diploma in Child Psychiatry	D.Child Psych.
Diploma in Clinical Chemistry	D.Cl.Chem.
Diploma in Industrial Health	D.I.H.
Post-Doctoral training in Medical Microbiology	

**Faculty of Music:****Undergraduate**

Bachelor of Music	B.Mus.
Bachelor of Music in Performance	Mus Bac.Perf.
Advanced Certificate in Performance	Adv.Cert.Perf.
Artist Diploma	Art.Dip.Mus.
Diploma in Operatic Performance	Dip.Op.Perf.

**Graduate**

Master of Music	Mus.M.
Master of Arts	M.A.
Doctor of Musical Arts	D.M.A.
Doctor of Philosophy	Ph.D.

**Lawrence S. Bloomberg Faculty of Nursing:****Undergraduate**

Bachelor of Science in Nursing	B.Sc.N.
Certificate as a Nurse Practitioner (Primary Health Care)	Cert.N.P.(PHC)

**Graduate**

Master of Nursing	M.N.
Master of Nursing Health Administration	M.N./M.H.Sc.
Doctor of Philosophy	Ph.D.
Post Masters Nurse Practitioner Diploma	Dip.N.P.

## DEGREES, DIPLOMAS AND CERTIFICATES OFFERED BY DIVISION

(continued)

2007-08

### Ontario Institute for Studies in Education (OISE):

#### **Undergraduate**

Bachelor of Education:

Consecutive teacher education program

B.Ed.

Concurrent teacher education program

B.Mus./B.Ed.

or B.P.H.E./B.Ed.

or H.B.A./B.Ed.

or H.B.Sc./B.Ed.

Diploma in Technological Education

Dip.T.Ed.

#### **Graduate**

Master of Education

M.Ed.

Master of Teaching

M.T.

Master of Arts

M.A.

Doctor of Education

Ed.D.

Doctor of Philosophy

Ph.D.

### Leslie L. Dan Faculty of Pharmacy:

#### **Undergraduate**

Bachelor of Science in Pharmacy

B.Sc.Phm.

Doctor of Pharmacy

Pharm.D.

#### **Graduate**

Master of Science

M.Sc.

Doctor of Philosophy

Ph.D.

### Faculty of Physical Education and Health:

#### **Undergraduate**

Bachelor of Physical and Health Education

B.P.H.E.

#### **Graduate**

Master of Science

M.Sc.

Doctor of Philosophy

Ph.D.

### School of Public Policy and Governance:

Master of Public Policy

M.P.P.

### Factor-Inwentash Faculty of Social Work:

#### **Graduate**

Master of Social Work

M.S.W.

Master of Health Science in Health Administration  
and Master of Social Work

M.H.Sc./M.S.W.

Doctor of Philosophy

Ph.D.

### University of Toronto at Mississauga:

#### **Undergraduate**

Honours Bachelor of Arts

H.B.A.

Honours Bachelor of Science

H.B.Sc.

Bachelor of Commerce

B.Com.

**DEGREES, DIPLOMAS AND CERTIFICATES OFFERED BY DIVISION**

(continued)

2007-08

**University of Toronto at Mississauga (continued):****Graduate**

Master of Arts (tri-campus)	M.A.
Master of Science (tri-campus)	M.Sc.
Master of Biotechnology	M.Biotech
Master of Management & Professional Accounting	M.M.P.A.
Doctor of Philosophy (tri-campus)	Ph.D.
Diploma in Investigative & Forensic Accounting	D.I.F.A.

**University of Toronto at Scarborough:****Undergraduate**

Honours Bachelor of Arts	H.B.A.
Honours Bachelor of Science	H.B.Sc.
Bachelor of Business Administration	B.B.A.
Certificate in Business	Cert.Bus.

**Graduate**

Master of Arts (tri-campus)	M.A.
Master of Science (tri-campus)	M.Sc.
Masters in Environmental Sciences	M.Env.Sc.
Doctor of Philosophy (tri-campus)	Ph.D.

**Woodsworth College:****Undergraduate**

Certificate in Human Resource Management	C.H.R.M.
Certificate in Teaching English to Speakers of Other Languages	C.T.E.S.O.L.

**COMBINED MULTI-DIVISIONAL PROGRAMS:**

Master of Business Administration and Jeffrey Skoll Bachelor of Applied Science	B.A.Sc./M.B.A.
Juris Doctor and Master of Arts (Criminology, Economics, Russian and East European Studies)	J.D./M.A.
Juris Doctor and Master of Business Administration	J.D./M.B.A.
Juris Doctor and Master of Information Studies	J.D./M.I.St.
Juris Doctor and Master of Social Work	J.D./M.S.W.
Juris Doctor and Doctor of Philosophy (Economics, Philosophy, Political Science) combined programs	J.D./Ph.D.
Master of Business Administration and Master of Arts in Russian and East European Studies	M.B.A./M.A. (REES)



# Part B

## Finances

### **University of Toronto Financial Statements**

Statement of Operations 16

Changes in Surplus/Deficit 18

Operating Fund: Expense Summary 19

Operating Fund: Academic Expense Summary 20

Restricted Funds 21

### **University of Toronto Budget Reports**

Expense Budget Summary 22

Academic Costs 23

**UNIVERSITY OF TORONTO FINANCIAL STATEMENTS 2006-07**  
**STATEMENT OF OPERATIONS**

*for the year ended April 30, 2007*

*(with comparative figures for the year ended April 30, 2006)*

(millions of dollars)

	OPERATING FUND	ANCILLARY OPERATIONS	CAPITAL FUND	RESTRICTED FUNDS	TOTAL 2007	TOTAL 2006
<b>Revenues</b>						
Government Grants - general operations	657.1				657.1	587.2
Student Fees	532.2	6.0	0.7		538.9	505.7
Government & other grants - restricted purposes		0.2	23.1	281.0	304.3	310.6
Sales, services and sundry income	90.9	121.0	1.0		212.9	202.2
Investment income (loss)						
Endowments	38.4			42.3	80.7	80.8
Other	44.8	1.9	1.5	5.5	53.7	39.2
Donations		1.6	17.5	55.7	74.8	37.0
Contract research	4.2			15.4	19.6	21.6
<b>Total Revenues</b>	<b>1,367.6</b>	<b>130.7</b>	<b>43.8</b>	<b>399.9</b>	<b>1,942.0</b>	<b>1,784.3</b>

**UNIVERSITY OF TORONTO FINANCIAL STATEMENTS 2006-07**  
**STATEMENT OF OPERATIONS (continued)**

*for the year ended April 30, 2007*

*(with comparative figures for the year ended April 30, 2006)*

*(millions of dollars)*

	OPERATING FUND	ANCILLARY OPERATIONS	CAPITAL FUND	RESTRICTED FUNDS	TOTAL 2007	TOTAL 2006
<b>Expenses</b>						
Salaries and benefits	857.9	6.6		197.4	1,061.9	1,012.3
Materials and supplies	79.7	1.6		130.4	211.7	200.0
Scholarships, fellowships and bursaries	115.9				115.9	106.5
Amortization of capital assets	8.3	10.2	80.3	0.3	99.1	91.4
Cost of sales and services		77.7			77.7	79.1
Utilities	44.1	8.4			52.5	51.1
Repairs and maintenance	34.1	12.7	6.7		61.4	54.2
Travel and conferences	17.0			18.7	35.7	32.6
Interest on long-term debt	13.2	17.8			31.0	29.3
External contracted services	20.0			10.5	30.5	22.5
Telecommunications	9.1			1.5	10.6	11.0
Other	15.1			4.4	19.5	19.3
<b>Total Expenses</b>	<b>1,214.4</b>	<b>135.0</b>	<b>87.0</b>	<b>371.1</b>	<b>1,807.5</b>	<b>1,709.3</b>

**UNIVERSITY OF TORONTO FINANCIAL STATEMENTS 2006-07**

**CHANGES IN SURPLUS/DEFICIT**

*for the year ended April 30, 2007*

*(with comparative figures for the year ended April 30, 2006)*

(millions of dollars)

	OPERATING FUND	ANCILLARY OPERATIONS	CAPITAL FUND	RESTRICTED FUNDS	TOTAL 2007	TOTAL 2006
Net Income (loss)	153.2	(4.3)	(43.2)	28.8	134.5	75.0
Net transfers between funds	(14.4)	0.9	9.2	4.3		
Transfer of capital assets	(50.6)		50.6			
Change in internally restricted	(95.0)	0.5	(32.6)	(4.8)	(131.9)	(43.1)
Change in investments in capital assets		2.4	(0.7)		1.7	(17.5)
Transfers of donations to endowments				(4.1)	(4.1)	(13.9)
Transfer from internally restricted endowments				(24.2)	(24.2)	(26.8)
<b>Net change in surplus (deficit) for the year</b>	<b>(6.8)</b>	<b>(0.5)</b>	<b>(16.7)</b>		<b>(24.0)</b>	<b>(26.3)</b>
Deficit, beginning of the year	(59.5)	(79.8)	(31.8)		(171.1)	(144.8)
<b>Deficit, end of year</b>	<b>(66.3)</b>	<b>(80.3)</b>	<b>(48.5)</b>		<b>(195.1)</b>	<b>(171.1)</b>

**UNIVERSITY OF TORONTO FINANCIAL STATEMENTS 2006-07**

**OPERATING FUND: EXPENSE SUMMARY**

*Expense Summary for the year ended April 30, 2007*

*(with comparative totals for the year ended April 30, 2006)*

(thousands of dollars)

	ACADEMIC SALARIES	OTHER SALARIES	STAFF BENEFITS	TOTAL SALARIES AND BENEFITS	SUPPLIES AND OTHER EXPENSES	SCHOLARSHIPS FELLOWSHIPS BURSARIES	TOTAL	ELIMINATIONS AND RECLASSIFICATIONS*	TOTAL DIVISIONAL EXPENSE
Academic	\$374,847	\$167,106	\$115,781	\$657,735	\$159,574		\$817,309	(\$24,227)	\$793,082
Academic Services	10,034	24,161	7,345	41,540	37,707		79,246	(3,610)	75,637
Campus & Student Services		17,564	3,217	20,781	8,914		29,695	2,823	32,519
Student Assistance		3,219	398	3,616	730		120,277	212	120,489
Operation & Maintenance of Physical Plant		38,733	8,331	47,064	165,006		212,070	(96,511)	115,559
Administration		57,536	12,655	70,191	19,398		89,588	(4,093)	85,496
Interest							11,202	13,245	13,245
Renovations and Alterations							11,202	(5,196)	6,007
Amortization								8,344	8,344
Other Expenditures		3,804	940	4,745	16,674		21,418	(6,799)	14,619
<b>Sub-Total</b>	<b>384,882</b>	<b>312,123</b>	<b>148,667</b>	<b>845,671</b>	<b>419,204</b>	<b>115,931</b>	<b>1,380,806</b>	<b>(115,810)</b>	<b>1,264,996</b>
Eliminations	(16,901)	(15,003)	44,142	12,238	(\$128,048)		(115,810)		
<b>Total Expenses</b>	<b>\$367,981</b>	<b>\$297,120</b>	<b>\$192,808</b>	<b>\$857,909</b>	<b>\$291,156</b>	<b>\$115,931</b>	<b>\$1,264,996</b>		<b>1,264,996</b>

2005-06 Comparatives	\$351,266	\$278,301	\$186,105	\$815,672	\$262,085	\$106,510	1,184,267		
Percentage Change	4.8%	6.8%	3.6%	5.2%	11.1%	8.8%	6.8%		

\*Eliminations and Reclassifications are external recovery of salaries and benefits as well as internal departmental changes between different functional groups.

**UNIVERSITY OF TORONTO FINANCIAL STATEMENTS 2006-07****OPERATING FUND: ACADEMIC EXPENSE SUMMARY***For the year ending April 30, 2007*

(with comparative totals for the year ended April 30, 2006)

(thousands of dollars)

	<b>NET EXPENSES 2006-07</b>	<b>NET EXPENSES 2005-06</b>
<b>Arts &amp; Science, Colleges &amp; Schools:</b>		
Faculty of Arts & Science	\$213,987	\$189,017
Federated Colleges Block Grant	11,391	10,629
Graduate Centres & Institutes	6,492	6,282
Mississauga, University of Toronto	57,158	50,497
Scarborough, University of Toronto	50,160	46,293
School of Continuing Studies	10,860	9,643
School of Graduate Studies	4,445	4,324
Transitional Year Program	1,513	1,434
<b>Health Science Faculties/Schools:</b>		
Faculty of Dentistry	\$24,898	\$22,534
Faculty of Medicine	121,150	108,779
Faculty of Nursing	7,270	8,026
Faculty of Pharmacy	15,515	9,778
Faculty of Physical Education and Health	19,006	18,450
<b>Other Professional Faculties:</b>		
Faculty of Applied Science & Engineering	\$65,361	\$56,128
Faculty of Architecture, Landscape, and Design	6,045	5,558
Faculty of Forestry	2,934	2,767
Faculty of Information Studies	8,050	7,149
Faculty of Law	17,385	16,344
Management, Rotman School of	48,736	44,418
Faculty of Music	10,247	9,093
OISE/UT (includes University of Toronto Schools)	53,846	58,701
Faculty of Social Work	4,926	4,845
<b>Other Academic</b>	<b>\$31,706</b>	<b>\$57,638</b>
<b>Total Academic Expense</b>	<b>\$793,082</b>	<b>\$748,326</b>

**UNIVERSITY OF TORONTO FINANCIAL STATEMENTS 2006-07  
RESTRICTED FUNDS**

**Endowments and Expendable Funds at Fair Value**

*for the year ending April 30, 2007 (with comparative figures for the year ended April 30, 2006)*

(thousands of dollars)

	ENDOWMENT FUNDS		EXPENDABLE FUNDS	
	2007	2006	2007	2006
I/Anson Fund	\$3,232	\$2,952	\$324	\$211
Connaught Funds	103,952	94,950	8,055	6,934
Departmental Funds	170,776	155,227	138,884	125,967
Faculty Endowment Funds	560,497	507,564	13,549	12,640
Miscellaneous Funds	35,151	33,749	4,414	2,806
Ontario Student Opportunity Trust Funds Phase 1	378,479	345,660	22,163	21,010
Ontario Student Opportunity Trust Funds Phase 2	43,884	40,199	2,085	1,768
Ontario Trust for Student Support	35,606	19,945	948	308
Research Funds	146,671	134,882	193,521	137,474
Student Aid Funds	344,421	293,642	31,347	25,565
<b>Total University of Toronto</b>	<b>\$1,822,669</b>	<b>\$1,628,770</b>	<b>\$415,290</b>	<b>\$334,683</b>
<b>Affiliated Universities</b>	<b>326,242</b>	<b>257,097</b>	<b>na</b>	<b>na</b>
<b>Total</b>	<b>\$2,148,911</b>	<b>\$1,885,867</b>	<b>na</b>	<b>na</b>

## UNIVERSITY OF TORONTO BUDGET REPORTS

### EXPENSE BUDGET SUMMARY

*Time Series Comparison of Major Budget Categories, based on net expense budgets*

*2005-06 to 2007-08*

*(Millions of dollars)*

	2007-08	PERCENT INCREASE OVER PRIOR YEAR	2006-07	PERCENT INCREASE OVER PRIOR YEAR	2005-06
Academic	758.8	13%	674.4	8%	623.2
Academic Services	67.8	7%	63.5	0%	63.4
Campus & Student Services	0.9	-19%	1.1	-30%	1.6
Student Assistance	64.8	-23%	83.8	7%	78.2
Facilities & Services	62.3	9%	57.1	13%	50.4
Utilities	50.1	-7%	54.2	56%	34.7
Alterations, Renovations, Lease Costs	1.4	-2%	1.5	-10%	1.6
Administration	90.2	27%	70.8	4%	68.0
General University Expense	61.0	-29%	85.9	16%	74.3
Municipal Taxes	4.8	2%	4.7	4%	4.5
<b>Total Expense Budget Summary</b>	<b>1,162.3</b>	<b>6%</b>	<b>1,096.9</b>	<b>10%</b>	<b>999.9</b>
Administrative costs as % of Academic Costs	12%		11%		11%
Administrative Costs as % of Academic Costs & Academic Services Costs	11%		10%		10%
General University Costs as % of Academic Costs	8%		13%		12%



# UNIVERSITY OF TORONTO BUDGET REPORTS

## ACADEMIC COSTS

Time Series Comparison of Major Academic Costs, based on Net Expense Budgets  
 2005-06 to 2007-08  
 (Millions of dollars)

	2007-08	PERCENT OF BUDGET	PERCENT OF INCREASE OVER PRIOR YEAR	2006-07	PERCENT OF BUDGET	PERCENT OF INCREASE OVER PRIOR YEAR	2005-06	PERCENT OF BUDGET
Gross Expense Budget	1,036.0			951.4			915.4	
Recoveries	(153.3)			(120.6)			(147.7)	
Divisional Income	(123.9)			(156.4)			(144.5)	
<b>Net Expense Budget</b>	<b>758.8</b>		<b>13%</b>	<b>674.4</b>		<b>8%</b>	<b>623.2</b>	
Arts & Science, Colleges & Schools	336.4	44%	14%	295.8	44%	12%	264.2	42%
Health Sciences	132.8	18%	18%	112.4	17%	8%	103.7	17%
Other Professional Faculties	188.3	25%	50%	125.2	19%	5%	119.1	19%
Other Academic Costs	101.3	13%	-28%	141.0	21%	4%	136.2	22%
<b>Net Expense Budget</b>	<b>758.8</b>	<b>100%</b>		<b>674.4</b>	<b>100%</b>		<b>623.2</b>	<b>100%</b>
Instructional Salaries	493.0	48%	-2%	501.7	53%	1%	498.6	54%
Other Salaries & Wages	151.4	15%	6%	142.6	15%	10%	130.2	14%
Benefits	125.9	12%	18%	107.0	11%	10%	97.2	11%
Supplies & Services	222.6	21%	33%	167.3	18%	5%	158.8	17%
Student Awards	43.1	4%	32%	32.8	3%	7%	30.6	3%
<b>Gross Expense Budget</b>	<b>1,036.0</b>	<b>100%</b>		<b>951.4</b>	<b>100%</b>		<b>915.4</b>	<b>100%</b>



# Part C

## Research

Research Population	26
Revenue from Externally Sponsored Research	27
Academic Linkages between the University of Toronto and International Institutions	28
Technology Transfer Activities:	
a) Invention Disclosures	29
b) Spin-off Companies	29
c) Industrial Contracts and Grants	30
d) Government Funding Leveraged by Industrial Collaboration	30

**RESEARCH POPULATION***September 2007*

	<b>HUMANITIES</b>	<b>SOCIAL SCIENCES</b>	<b>PHYSICAL SCIENCES</b>	<b>LIFE SCIENCES</b>	<b>TOTAL</b>
Full-Time Faculty	462	712	509	719	2,402
Part-Time Faculty	43	46	24	170	283
Status-Only Faculty	57	137	138	2,798	3,130
Full-Time Research Associates	4	19	125	111	259
Part-Time Research Associates	2	12	9	6	29
Post-Doctoral Fellows	18	44	328	1,221	1,611
Graduate Students	1,627	5,461	2,561	4,004	13,653

**Notes:**

1. Numbers shown here may differ from the full time faculty counts in other tables because of selection criteria for inclusion in the research population.
2. Faculty includes professorial ranks only.
3. Faculty members may have multiple appointments; only the main appointment was counted in the research population.
4. The figure for post-doctoral fellows includes those at the affiliated hospitals.

## REVENUE FROM EXTERNALLY SPONSORED RESEARCH

(thousands of dollars)

	2004-2005	2005-06	2006-07
<b>University of Toronto</b>			
Grants & Contracts	\$324,178	\$334,159	\$394,185
Donations	1,420	990	1,323
<b>Subtotal</b>	<b>325,598</b>	<b>335,149</b>	<b>395,508</b>
Overhead	32,215	28,185	32,522
<b>Total, University of Toronto</b>	<b>\$357,813</b>	<b>\$363,334</b>	<b>\$428,030</b>
<b>Affiliated Hospitals*</b>	<b>\$397,434</b>	<b>\$424,656</b>	<b>\$425,827</b>
<b>Grand Total</b>	<b>\$755,247</b>	<b>\$787,990</b>	<b>\$853,857</b>

\* Overhead included

\*\* Estimate only, using previous year's revenue figure for the Affiliated Hospitals

## ACADEMIC LINKAGES BETWEEN THE UNIVERSITY OF TORONTO AND INTERNATIONAL INSTITUTIONS

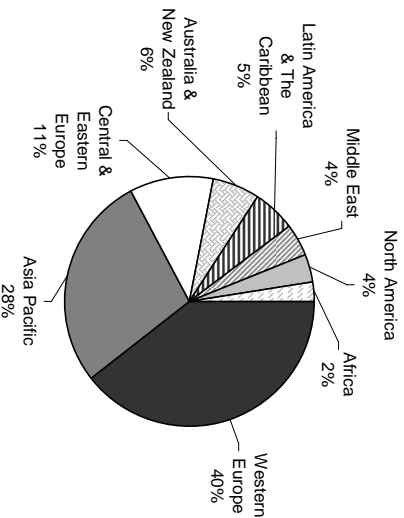
November 2007

REGION	NUMBER OF MOU'S*
Western Europe	65
Asia Pacific	46
Central & Eastern Europe	18
Australia & New Zealand	10
Latin America & The Caribbean	9
Middle East	7
North America	6
Africa	4
<b>Total</b>	<b>165</b>

\*Memoranda of Understanding (MOU's) are formal arrangements between institutions, which outline how they plan to cooperate over a specified period of time (normally, five years).

The areas included in MOU's are:

- joint research activities,
- participation in each institution's seminars and academic meetings,
- exchange of academic materials,
- short-term academic programs, and
- exchange of students.



## TECHNOLOGY TRANSFER ACTIVITIES

### DISCLOSURE ACTIVITY

	2004-05	2005-06	2006-07
Number of UoFT Inventions Disclosed	155	129	139

Excludes affiliated hospital disclosures.

Excludes Third Party disclosures to Innovations Foundation/Innovations at UoFT

Includes copyright and invention disclosures

### COMMERCIALIZATION ACTIVITY

	2004-05	2005-06	2006-07
Number of Inventions for which an Option/License/Assignment has been signed	---	---	39
Gross Invention Revenue*	\$1,696,475	1,951,475	\$2,503,966
New Start-up Companies	3	2	3
Number of Active companies	103	105	108

\*Includes revenue paid to Inventors and other institutions

All commercialization activity figures exclude affiliated hospitals.

TECHNOLOGY TRANSFER ACTIVITIES (continued)

**INDUSTRIAL CONTRACTS AND GRANTS\***

(April 2005 - March 2006)

Contracts	\$42,200,640
Grants	\$21,227,318
<b>Total industrial research funding</b>	<b>\$63,427,957</b>

**GOVERNMENT FUNDING LEVERAGED BY INDUSTRIAL COLLABORATION\***

(April 2005 - March 2006)

<b>Networks of Centres of Excellence</b>	UoT participated in 17 of 18	\$7,920,281
<b>Ontario Centres of Excellence</b>	UoT participated in 4 of 4	\$6,775,387
<b>Research Excellence (MRI) &amp; Ont. Research &amp; Development Challenge Fund</b>		\$23,264,583
<b>Federal Granting Councils:</b>		
<b>NSERC</b>	University/Industry Programs**	\$6,529,485
<b>CIHR</b>	University/Industry Programs**	\$2,152,721
<b>Total government funding leveraged by industrial collaboration</b>		<b>\$46,642,457</b>

\* Includes the affiliated hospitals.

\*\* Excludes the Networks of Centres of Excellence.

MRI: Ministry of Research and Innovation



# Part D

## Students

Enrolment by Campus and Faculty/College	32
Enrolment by Program Mix	34
Enrolment by Age and Gender Balance	35
International Student Enrolment by Geographic Origin	36
International Student Enrolment by Geographic Origin: Five-Year Trend	38
Ten-Year Enrolment Trends, All Students	41
Gender Balance of Graduate and Undergraduate Enrolments by Field of Study	42
Undergraduate Intake by Faculty	43
Graduate Intake by Faculty	44
Total Intake	45
Degrees Awarded by Field of Study and Gender	46
Tuition Fee Schedule for Domestic and International Students	47
Tuition Fee Schedule for Self-Funded Programs	52

## ENROLLMENT BY CAMPUS AND FACULTY/COLLEGE

November 1, 2006

FACULTY/COLLEGE BY CAMPUS	UNDERGRADUATE STUDENTS			GRADUATE STUDENTS			ALL STUDENTS		FTE STUDENTS		
	Full-Time	Part-Time	Percent Female	Full-Time	Part-Time	Percent Female	Total	Percent Female	Under-graduate	Graduate	Total
<b>St. George Campus</b>											
Applied Science & Engineering	4,094	157	22%	1,120	173	25%	5,544	22%	4,378	1,172	5,550
Architecture Landscape & Design	0	0	---	275	11	45%	286	45%	0	278	278
Arts & Science	22,586	3,592	59%	2,801	119	50%	29,098	58%	21,084	2,837	23,921
Innis	1,598	113	59%	0	0	---	1,711	59%	1,482	0	1,482
New	3,970	336	54%	0	0	---	4,306	54%	3,627	0	3,627
St. Michael's College	3,962	315	56%	0	0	---	4,277	56%	3,628	0	3,628
Trinity	1,543	102	61%	0	0	---	1,645	61%	1,470	0	1,470
University	4,049	316	61%	0	0	---	4,365	61%	3,712	0	3,712
Victoria	3,278	286	67%	0	0	---	3,564	67%	3,038	0	3,038
Woodsworth	4,186	2,124	57%	0	0	---	6,310	57%	4,127	0	4,127
Dentistry	332	0	56%	118	3	54%	453	55%	332	0	451
Forestry	0	0	---	78	0	54%	78	54%	0	78	78
Graduate Centres & Institutes	0	0	---	178	32	64%	210	64%	0	188	188
Information Studies	0	0	---	314	115	71%	429	71%	0	349	349
Law	589	32	50%	108	9	53%	738	50%	613	111	724
Management	0	0	---	690	267	29%	957	29%	0	773	773
Medicine	3,475	2	49%	2,426	119	63%	6,022	55%	3,477	2,467	5,944
Music	437	23	58%	135	12	60%	607	59%	473	139	612
Nursing	307	17	91%	209	190	95%	723	93%	310	266	576

**ENROLLMENT BY CAMPUS AND FACULTY/COLLEGE (continued)**

November 1, 2006

FACULTY/COLLEGE BY CAMPUS	UNDERGRADUATE STUDENTS			GRADUATE STUDENTS			ALL STUDENTS		FTE STUDENTS		
	Full-Time	Part-Time	Percent Female	Full-Time	Part-Time	Percent Female	Total	Percent Female	Under-graduate	Graduate	Total
<b>St. George (continued)</b>											
OISE/UT	1,277	8	70%	1,141	654	78%	3,080	75%	1,288	1,338	2,625
Pharmacy	896	26	70%	100	24	56%	1,046	69%	961	107	1,068
Physical Education & Health	531	34	66%	44	8	62%	617	66%	541	46	588
Social Work	0	0	---	305	64	89%	369	89%	0	324	324
Transitional Year Program	69	229	57%	0	0	---	298	57%	107	0	107
Woodsworth Certificates, Diplomas	28	124	77%	0	2	89%	154	77%	63	1	63
<b>Total St. George</b>	<b>34,621</b>	<b>4,244</b>	<b>55%</b>	<b>10,042</b>	<b>1,802</b>	<b>57%</b>	<b>50,709</b>	<b>55%</b>	<b>33,627</b>	<b>10,592</b>	<b>44,219</b>
<b>U of T at Mississauga</b>											
Arts & Science	9,169	840	59%	179	0	50%	10,188	59%	8,282	179	8,461
Management at UTM (MMPA, DIFA)	0	0	---	99	47	61%	146	61%	0	113	113
<b>Total U of T at Mississauga</b>	<b>9,169</b>	<b>840</b>	<b>59%</b>	<b>278</b>	<b>47</b>	<b>55%</b>	<b>10,334</b>	<b>59%</b>	<b>8,282</b>	<b>292</b>	<b>8,574</b>
<b>U of T at Scarborough</b>											
Arts & Science	9,127	914	59%	96	16	61%	10,153	59%	8,311	101	8,412
Graduate, all other faculties	0	0	---	6	0	50%	6	50%	---	6	6
<b>Total Scarborough</b>	<b>9,127</b>	<b>914</b>	<b>59%</b>	<b>102</b>	<b>16</b>	<b>59%</b>	<b>10,159</b>	<b>59%</b>	<b>8,311</b>	<b>107</b>	<b>8,418</b>
<b>Grand Total</b>	<b>52,917</b>	<b>5,998</b>	<b>56%</b>	<b>10,422</b>	<b>1,865</b>	<b>57%</b>	<b>71,202</b>	<b>56%</b>	<b>50,220</b>	<b>10,991</b>	<b>61,210</b>

Note: Excludes 787 FTE students in the Toronto School of Theology.

## ENROLMENT BY PROGRAM MIX

November 1, 2006

	HEADCOUNT	FTE
Undergraduate First Entry	51,802	43,176
Undergraduate Professional	7,113	7,043
Graduate Doctoral Stream	7,665	7,417
Graduate Professional and Diploma	4,622	3,574
Total	71,202	61,210

Note: Excludes 787 FTE students in the Toronto School of Theology.

## ENROLLMENT BY AGE AND GENDER BALANCE

November 1, 1996 vs. November 1, 2006

	1996			2006		
	Male	Female	Total	Male	Female	Total
<b>Full-Time Undergraduate</b>						
Number	13,905	16,571	30,476	23,212	29,705	52,917
Percent	45.6%	54.4%	100.0%	43.9%	56.1%	100.0%
Median Age	20.6	20.3	20.4	21.1	21.0	21.0
<b>Full-Time Graduate</b>						
Number	3,651	3,703	7,354	4,675	5,747	10,422
Percent	49.6%	50.4%	100.0%	44.9%	55.1%	100.0%
Median Age	27.4	26.9	27.2	28.1	27.7	27.9
<b>Part-Time Undergraduate</b>						
Number	4,600	7,283	11,883	2,661	3,337	5,998
Percent	38.7%	61.3%	100.0%	44.4%	55.6%	100.0%
Median Age	24.6	26.1	25.4	24.0	25.1	24.6
<b>Part-Time Graduate</b>						
Number	952	1,580	2,532	671	1,194	1,865
Percent	37.6%	62.4%	100.0%	36.0%	64.0%	100.0%
Median Age	33.3	35.6	34.5	34.0	35.0	36.4

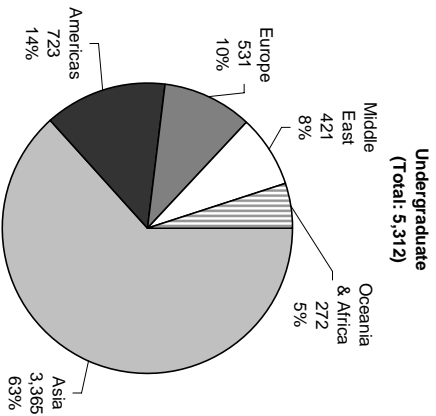
Notes: Excludes Toronto School of Theology;

1996 numbers exclude 448 part-time enrollments in the Woodsworth Pre-University program;

2006 numbers exclude Additional Qualification courses no longer reported to MTCU.

## INTERNATIONAL STUDENT ENROLMENT BY GEOGRAPHIC ORIGIN

November 1, 2006

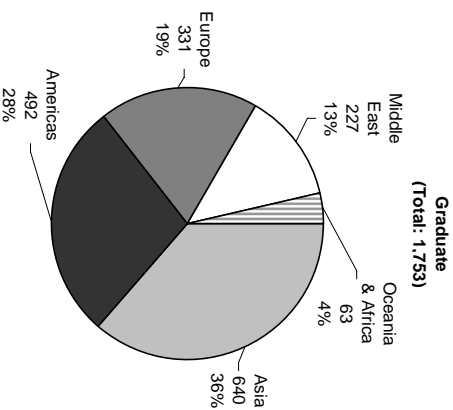


Top 3 Countries in each Region		Percentage of Count Undergraduate	
Region	Country	Count	Percentage
Americas	U.S.A	411	7.7%
	Trinidad & Tobago	62	1.2%
	Brazil	42	0.8%
Asia	China & Hong Kong	1,520	28.6%
	South Korea	681	12.8%
	India	254	4.8%
Europe	United Kingdom	144	2.7%
	France	53	1.0%
	Germany	49	0.9%
Middle East	Saudi Arabia	106	2.0%
	Israel	54	1.0%
	Iran	32	0.6%
Oceania & Africa	Australia	61	1.1%
	Nigeria	56	1.1%
	Kenya	33	0.6%

Note: In Fall 2006, the largest percentage of undergraduate international students were from China including Hong Kong (28.6%) followed by South Korea (12.8%).

## INTERNATIONAL STUDENT ENROLMENT BY GEOGRAPHIC ORIGIN (continued)

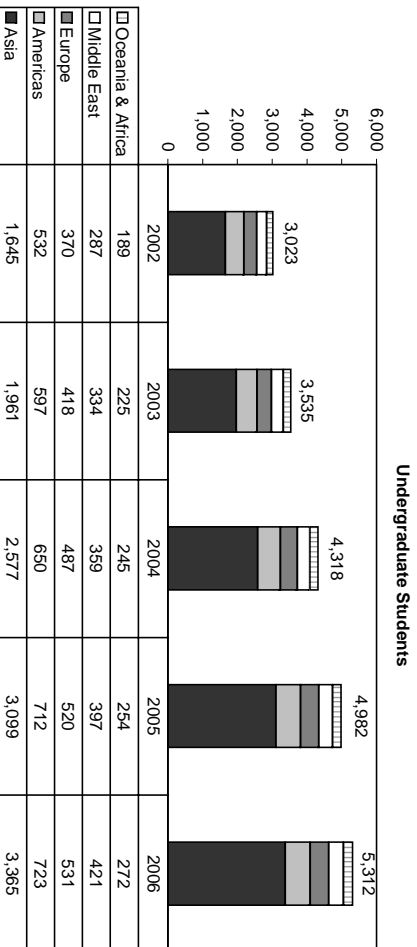
November 1, 2006



Top 3 Countries in each Region			Percentage of Graduate
Country	Count		
Americas	U.S.A.	347	19.8%
	Mexico	48	2.7%
	Brazil	20	1.1%
Asia	China & Hong Kong	310	17.7%
	India	118	6.7%
	Japan	51	2.9%
Europe	Germany	70	4.0%
	United Kingdom	36	2.1%
	Greece	30	1.7%
Middle East	Iran	88	5.0%
	Israel	40	2.3%
	Turkey	26	1.5%
Oceania & Africa	Australia	23	1.3%
	New Zealand	7	0.4%
	Nigeria	6	0.3%

Note: In Fall 2006, the largest percentage of graduate international students were from the USA (19.8%) followed by China including Hong Kong (17.7%).

**INTERNATIONAL STUDENT ENROLLMENT: FIVE-YEAR TREND**  
*November 1, 2002 to November 1, 2006*



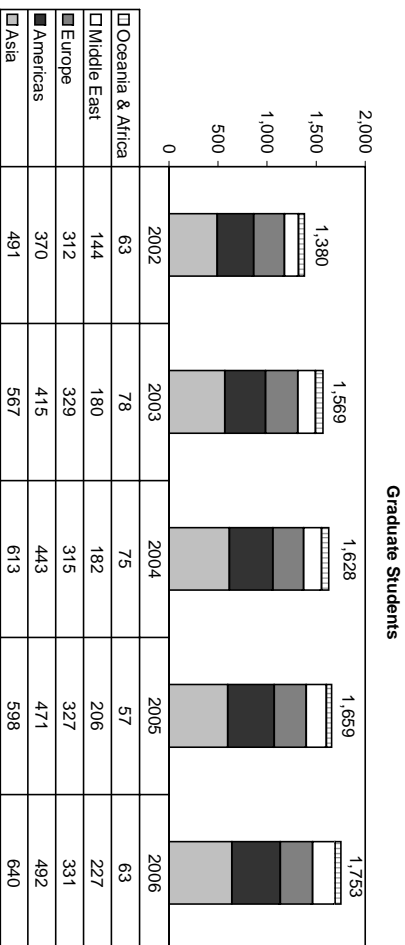
**Note:**

In Fall 2002, the largest percentage of undergraduate international students were from China including Hong Kong (20.7%) followed by the USA (11.8%).

In Fall 2006, the largest percentage of undergraduate international students were from China including Hong Kong (28.6%) followed by South Korea (12.8%).



**INTERNATIONAL STUDENT ENROLLMENT: FIVE-YEAR TREND**(continued)  
*November 1, 2002 to November 1, 2006*



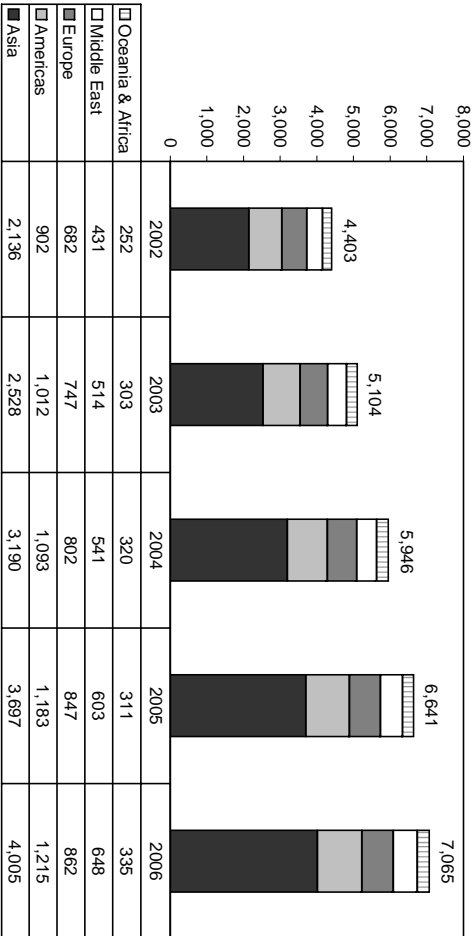
**Note:**

In Fall 2002, the largest percentage of graduate international students were from China including Hong Kong (19.1%) followed by USA (17.5%).

In Fall 2006, the largest percentage of graduate international students were from the USA (19.8%) followed by China including Hong Kong (17.7%).

**INTERNATIONAL STUDENT ENROLLMENT: FIVE-YEAR TREND**(continued)  
*November 1, 2002 to November 1, 2006*

**Total International Students**



## TEN-YEAR ENROLMENT TRENDS, ALL STUDENTS

*November 1, 1997-November 1, 2006*

	TOTAL STUDENTS*				INTERNATIONAL STUDENTS			
	Undergraduate		Graduate		Undergraduate		Graduate	
	Total	% Female	Total	% Female	Total	% Female	Total	% Female
1997	42,362	56.8%	9,874	54.1%	1,141	41.3%	817	37.0%
1998	43,139	56.9%	9,658	54.9%	1,266	43.3%	822	39.1%
1999	44,234	56.8%	9,898	54.8%	1,568	44.4%	899	40.6%
2000	44,964	56.8%	10,163	55.4%	1,914	45.7%	980	40.9%
2001	47,265	57.6%	10,775	56.0%	2,387	47.7%	1,150	42.3%
2002	50,403	57.3%	11,597	56.1%	3,023	49.7%	1,380	43.9%
2003	55,369	57.9%	11,928	55.9%	3,535	49.9%	1,569	41.9%
2004	55,624	56.9%	12,068	55.4%	4,318	49.3%	1,628	41.6%
2005	58,182	56.5%	11,961	55.8%	4,982	49.1%	1,659	42.4%
2006	58,915	56.1%	12,287	56.5%	5,312	48.8%	1,753	43.4%

\* Total students includes domestic students and international students.

Notes:

1. Excludes students in the Toronto School of Theology.
2. Excludes students enrolled in Additional Qualification courses.

**GENDER BALANCE OF UNDERGRADUATE AND GRADUATE ENROLMENT BY FIELD OF STUDY**  
November 1, 2006

STATISTICS CANADA FIELD OF STUDY	UNDERGRADUATE		GRADUATE	
	Total	% Female	Total	% Female
Biological Sciences	4,984	61%	483	56%
Education & Physical Education	2,173	71%	1,847	77%
Engineering & Applied Sciences	4,350	22%	1,641	30%
Fine & Applied Arts	1,434	71%	291	68%
General Arts and Science	9,578	60%	0	n/a
Health Professions	5,811	56%	2,833	67%
Humanities	9,319	62%	1,494	63%
Math & Physical Sciences	2,841	34%	946	30%
Social Sciences	16,551	58%	2,752	52%
Not Specified	1,874	57%	0	n/a
<b>Total</b>	<b>58,915</b>	<b>56%</b>	<b>12,287</b>	<b>56%</b>

Notes:

1. 'Education & Physical Education includes the Faculty of Physical Education and Health and the Ontario Institute for Studies in Education (OISE).
2. Excludes students in Additional Qualification courses (OISE).
3. Excludes students in the Toronto School of Theology.
4. Most of the "not specified" group includes first year and special students in Arts and Science.

## UNDERGRADUATE INTAKE BY FACULTY

November 1, 2006

	TOTAL HEADCOUNT						PERCENTAGE OF TOTAL HEADCOUNT						
	GTA Area		Other Ontario		Inter-national		GTA Ontario		Other Canada		Inter-national		
<b>Arts &amp; Science</b>													
Mississauga	2,170	284	89	280	2,823	76.9%	10.1%	3.2%	9.9%	100%			
Scarborough	2,205	82	61	259	2,607	84.6%	3.1%	2.3%	9.9%	100%			
St. George	3,806	550	294	905	5,555	68.5%	9.9%	5.3%	16.3%	100%			
<b>Total Arts &amp; Science</b>	<b>8,181</b>	<b>916</b>	<b>444</b>	<b>1,444</b>	<b>10,985</b>	<b>74.5%</b>	<b>8.3%</b>	<b>4.0%</b>	<b>13.1%</b>	<b>100%</b>			
Applied Science	826	96	129	192	1,243	66.5%	7.7%	10.4%	15.4%	100%			
Dentistry	51	17	3	3	74	68.9%	23.0%	4.1%	4.1%	100%			
Law	84	35	41	25	185	45.4%	18.9%	22.2%	13.5%	100%			
OISE/UT	588	183	19	7	797	73.8%	23.0%	2.4%	0.9%	100%			
<b>Medicine</b>													
B Sc (Med. Radiation Science)	35	27	10	1	73	47.9%	37.0%	13.7%	1.4%	100%			
MD	75	55	23	0	153	49.0%	35.9%	15.0%	0.0%	100%			
<b>Total, Medicine</b>	<b>110</b>	<b>82</b>	<b>33</b>	<b>1</b>	<b>226</b>	<b>48.7%</b>	<b>36.3%</b>	<b>14.6%</b>	<b>0.4%</b>	<b>100%</b>			
Music	82	22	12	9	125	65.6%	17.6%	9.6%	7.2%	100%			
Nursing	69	29	11	2	111	62.2%	26.1%	9.9%	1.8%	100%			
Pharmacy	54	74	23	1	152	35.5%	48.7%	15.1%	0.7%	100%			
Physical Education and Health	114	16	1	2	133	85.7%	12.0%	0.8%	1.5%	100%			
<b>Total Undergraduate</b>	<b>10,159</b>	<b>1,470</b>	<b>716</b>	<b>1,686</b>	<b>14,031</b>	<b>72.4%</b>	<b>10.5%</b>	<b>5.1%</b>	<b>12.0%</b>	<b>100%</b>			

Notes:

1. Excludes Transitional Year Program, Academic Bridging Program and Woodsworth diploma and certificate programs.
2. Intake data is not available for Post-Graduate Medical Education.

## GRADUATE INTAKE BY FACULTY

November 1, 2006

	TOTAL HEADCOUNT					PERCENTAGE OF TOTAL HEADCOUNT							
	GTA	Other	Ontario	Canada	Other national	Inter-national	Total	GTA	Other	Ontario	Canada	Other national	Inter-national
Applied Science & Engineering	228	42	35	35	94	399	57.1%	10.5%	8.8%	23.6%	100%		
Architecture, Landscape & Design	46	11	16	16	11	84	54.8%	13.1%	19.0%	13.1%	100%		
Arts & Science	581	153	156	156	283	1,173	49.5%	13.0%	13.3%	24.1%	100%		
Dentistry	5	0	0	0	6	11	45.5%	0.0%	0.0%	54.5%	100%		
Forestry	10	4	5	5	8	27	37.0%	14.8%	18.5%	29.6%	100%		
Information Studies	118	30	18	18	16	182	64.8%	16.5%	9.9%	8.8%	100%		
Law	20	4	12	12	32	68	29.4%	5.9%	17.6%	47.1%	100%		
Management	248	16	31	31	73	368	67.4%	4.3%	8.4%	19.8%	100%		
Medicine	505	148	65	65	59	777	65.0%	19.0%	8.4%	7.6%	100%		
Music	34	10	12	12	10	66	51.5%	15.2%	18.2%	15.2%	100%		
Nursing	110	37	6	6	2	155	71.0%	23.9%	3.9%	1.3%	100%		
OISE/UT	412	79	27	27	35	553	74.5%	14.3%	4.9%	6.3%	100%		
Pharmacy	16	5	0	0	0	21	76.2%	23.8%	0.0%	0.0%	100%		
Physical Education & Health	11	2	1	1	1	15	73.3%	13.3%	6.7%	6.7%	100%		
SGS Centres & Institutes	78	16	12	12	8	114	68.4%	14.0%	10.5%	7.0%	100%		
Social Work	136	35	15	15	5	191	71.2%	18.3%	7.9%	2.6%	100%		
<b>Total Graduate</b>	<b>2,558</b>	<b>592</b>	<b>411</b>	<b>411</b>	<b>643</b>	<b>4,204</b>	<b>60.8%</b>	<b>14.1%</b>	<b>9.8%</b>	<b>15.3%</b>	<b>100%</b>		

Note: Includes Graduate diplomas in Medicine and Music.

**TOTAL INTAKE**

November 1, 2006

	TOTAL HEADCOUNT					PERCENTAGE OF TOTAL HEADCOUNT				
	GTA Area	Other Ontario	Other Canada	Inter-national	Total	GTA	Other Ontario	Other Canada	Inter-national	Total
Total Undergraduate	10,159	1,470	716	1,686	14,031	72.4%	10.5%	5.1%	12.0%	100%
Total Graduate	2,558	592	411	643	4,204	60.8%	14.1%	9.8%	15.3%	100%
<b>Undergraduate &amp; Graduate</b>	<b>12,717</b>	<b>2,062</b>	<b>1,127</b>	<b>2,329</b>	<b>18,235</b>	<b>69.7%</b>	<b>11.3%</b>	<b>6.2%</b>	<b>12.8%</b>	<b>100%</b>

## DEGREES AWARDED BY FIELD OF STUDY AND GENDER

*Calendar Year 2006*

STATISTICS CANADA FIELD OF STUDY	UNDERGRADUATE		MASTERS		DOCTORAL		TOTAL	
	Total	% Female	Total	% Female	Total	% Female	Total	% Female
Biological Sciences	794	67%	72	69%	21	67%	887	67%
Education & Physical Education	1,355	69%	550	78%	133	81%	2,038	73%
Engineering & Physical Sciences	845	28%	394	33%	96	18%	1,335	29%
Fine & Applied Arts	319	71%	67	66%	15	53%	401	70%
General Arts & Science	670	57%					670	57%
Health Professions	914	66%	640	79%	128	59%	1,682	71%
Humanities	1,605	64%	350	63%	78	47%	2,033	63%
Mathematics & Physical Sciences	662	33%	170	31%	75	27%	907	32%
Social Sciences	3,295	64%	947	50%	98	54%	4,340	61%
<b>Total</b>	<b>10,459</b>	<b>60%</b>	<b>3,190</b>	<b>60%</b>	<b>644</b>	<b>52%</b>	<b>14,293</b>	<b>60%</b>

Notes:

1. Education & Physical Education includes the Faculty of Physical Education & Health and the Ontario Institute for Studies in Education (OISE).
2. Excludes Toronto School of Theology, Certificate and Diploma students.



**TUITION FEE SCHEDULE FOR DOMESTIC AND INTERNATIONAL STUDENTS**  
**2007 Entering Cohort**  
 2007-08

	<b>DOMESTIC STUDENTS</b>	<b>INTERNATIONAL STUDENTS</b>
<b>APPLIED SCIENCE &amp; ENGINEERING</b>		
Bachelors (B.A./Sc.)	\$8,014	\$19,845
Master of Engineering (M.Eng.)	\$7,567	\$19,845
<b>ARCHITECTURE, LANDSCAPE, AND DESIGN</b>		
Master of Architecture (M. Arch.)	\$6,956	\$19,845
Master of Landscape Architecture (M.L.A.)	\$6,956	\$19,845
Master of Urban Design (M.U.D.)	\$6,956	\$19,845
<b>ARTS &amp; SCIENCE incl. SCARBOROUGH</b>		
Bachelors (B.A./B.Sc.)	\$4,570	\$17,640
*Bachelors - Bioinformatics and Computational Biology	\$4,570	\$17,640
*Bachelors - Computer Science and Communication Culture & Information Technology	\$4,570	\$17,640
*Bachelors - Commerce/Bus Admin (B.Com/B.B.A)	\$4,570	\$17,640
*Bachelors - Mgt UTM	\$4,570	\$17,640
*Bachelors - UTSC - Joint Programs with Centennial	\$4,570	\$17,640
Master of Science in Planning (M.Sc.Pi)	\$6,956	\$17,640
Master of Urban Design Studies (M.U.D.S.)	\$6,956	\$17,640
Masters of Spatial Analysis - Joint Program with Ryerson (M.S.A.)	\$6,956	\$17,640
Master of Biotechnology (M.Biotech.)	\$10,025	\$19,845
Master of Visual Studies (M.V.S.)	\$5,886	\$17,640
Masters in Environmental Science (M.Env.Sc.)	\$6,956	\$17,640
Master of Financial Economics (M.F.E.)	\$19,307	\$27,167
Master of Public Policy (M.P.P.)	\$15,000	\$22,500

\*For Arts and Science students in programs with additional cost recovery fees beginning in Year 2 the fee shown for Entering Year is the Arts and Science fee charged to all students in Year 1.

**TUITION FEE SCHEDULE FOR DOMESTIC AND INTERNATIONAL STUDENTS (continued)**  
**2007 Entering Cohort**  
 2007-08

	<b>DOMESTIC STUDENTS</b>	<b>INTERNATIONAL STUDENTS</b>
<b>DENTISTRY</b>		
Doctor of Dental Surgery (D.D.S.)	\$20,937	\$42,000
Master of Science with Speciality Training - MOH Funded		
Oral Maxillofacial Surgery & Anaesthesia; Oral Pathology and Oral Medicine	\$1,725	na
Oral Pathology; Oral Medicine	\$2,187	na
Master of Science with Speciality Training - Non-MOH Funded		
Dental Public Health	\$7,286	\$15,993
Oral Maxillofacial Surgery	\$17,174	\$36,308
Other	\$15,920	\$33,743
PhD with Speciality Training		
MOH Funded	\$3,508	na
Dental Public Health	\$6,446	\$14,335
Other non-MOH funded	\$10,903	\$23,487
<b>FORESTRY</b>		
Master of Forest Conservation (M.F.C.)	\$6,636	\$19,845
<b>INFORMATION STUDIES</b>		
Master of Information Studies (M.I.St.)	\$6,636	\$19,845
Master of Museum Studies (M.M.St.)	\$7,286	\$17,640
<b>LAW</b>		
Juris Doctor (J.D.)	\$18,662	\$28,191
Master of Laws (L.L.M.)	\$5,886	\$19,845
Masters in Studies in Law (M.S.L.)	\$18,662	\$13,230
Doctor of Juridical Science (S.J.D.)	\$5,886	\$13,230

**TUITION FEE SCHEDULE FOR DOMESTIC AND INTERNATIONAL STUDENTS (continued)**  
2007-08

	<b>DOMESTIC STUDENTS</b>	<b>INTERNATIONAL STUDENTS</b>
<b>MANAGEMENT</b>		
Master of Business Administration, 2 Year Program (M.B.A.)	\$27,000	\$39,731
Master of Business Administration, 3 Year Program (M.B.A.)	\$19,829	\$27,149
Master of Finance (M.F.)	\$27,500	\$38,000
Master of Management & Professional Accounting (M.M.P.A.)	\$21,341	\$25,527
Diploma in Forensic Accounting (D.I.F.A.)	\$9,072	\$10,500
<b>MEDICINE</b>		
Doctor of Medicine (M.D.)	\$16,862	\$44,100
Health Science Diplomas	\$7,286	\$15,993
Radiation Sciences (B.Sc.Med.Rad.Sc.)	\$5,166	\$18,233
M.Sc. Occupational Therapy and Physical Therapy (M.Sc.O.T.) (M.Sc.P.T.)	\$7,286	\$17,640
Master of Health Science (M.H.Sc.)	\$7,286	\$17,640
Master of Science in Biomedical Communications (M.Sc.BMC.)	\$7,286	\$17,640
Master of Management of Innovation (M.M.I.)	\$19,760	\$27,300
Master of Science in Community Health (M.Sc.CH.)	\$7,286	\$17,640
Combined MD/PhD	\$11,374	\$28,665
<b>MUSIC</b>		
Undergraduate (Mus.Bac.)	\$4,570	\$17,640
Operatic Performance Diploma (Dip.Op.Perf.)	\$6,464	\$17,640
Advanced Certificate in Performance (Adv.Cert.Perf.)	\$6,464	\$17,640
Master of Music in Performance (Mus.M.(Performance))	\$6,464	\$17,640
Master of Music in Composition (Mus.M.(Composition))	\$6,113	\$13,230
Doctor of Musical Arts (Performance) & (Composition) D.M.A.	\$6,113	\$13,230

**TUITION FEE SCHEDULE FOR DOMESTIC AND INTERNATIONAL STUDENTS (continued)**

**2007 Entering Cohort**  
2007-08

	<b>DOMESTIC STUDENTS</b>	<b>INTERNATIONAL STUDENTS</b>
<b>NURSING</b>		
Bachelor of Science in Nursing (B.Sc.N)	\$6,133	\$17,640
Master of Nursing (M.N.)	\$6,891	\$17,640
<b>OTSEUT</b>		
Bachelor of Education (B.Ed.)	\$5,070	\$17,640
Technical & Vocational Certificates	\$5,070	\$17,640
Concurrent Teacher Education Program (CTEP)	\$4,770	\$17,640
Joint Master of Teaching in Human Devt and Curriculum	\$7,286	\$17,640
M.A. in Child Study	\$7,286	\$17,640
Master of Education (M.Ed.)	\$7,286	\$17,640
Doctor of Education (Ed.D.)	\$6,884	\$17,640
<b>PHARMACY</b>		
Bachelor of Science in Pharmacy (B.Sc.Pharm.)	\$10,797	\$22,050
Doctor of Pharmacy (Pharm.D.)	\$27,816	\$27,949
<b>PHYSICAL EDUCATION AND HEALTH</b>		
Bachelor of Physical Education & Health (B.P.E.H.)	\$4,570	\$17,640
<b>S.G.S. (annual fee)</b>		
Doctoral Stream	\$5,886	\$13,230
<b>S.G.S. CENTERS AND INSTITUTES</b>		
Master of Industrial Relations & Human Resources (M.I.R.H.R.)	\$7,286	\$19,845
<b>SOCIAL WORK</b>		
Master of Social Work (M.S.W.)	\$6,636	\$17,640

**TUITION FEE SCHEDULE FOR DOMESTIC AND INTERNATIONAL STUDENTS (continued)**

**2007 Entering Cohort**

*2007-08*

	<b>DOMESTIC STUDENTS</b>	<b>INTERNATIONAL STUDENTS</b>
<b>TRANSITIONAL YEAR PROGRAM</b>		
Regular	\$3,884	na
Extended	\$1,943	na
<b>WOODSWORTH</b>		
Woodsworth Certificates	\$4,570	\$17,640

**TUITION FEE SCHEDULE FOR SELF-FUNDED PROGRAMS**

2007-08

---

	<b>2007 ENTERING COHORT</b>
Masters of Engineering in Telecommunications	\$25,000
Masters of Engineering in Design & Manufacturing Course Fee	\$2,500
Summer Program in Medieval Latin	
Domestic	\$1,000
International	\$850 (U.S.)
Masters of Mathematical Finance	\$35,500
Executive Masters of Business Administration	\$85,000
Executive Masters of Business Administration (OMNIUM GEMBA)	\$5,000 (U.S.)
Sponsored Medical Trainees	\$30,123
Visiting MD Student Course Fee	
1-2 weeks	\$220
3-4 weeks	\$290
5-6 weeks	\$360
7-8 weeks	\$440
Post-Masters Acute Care Nurse Practitioner Program	\$17,000
OISE/UT- Laboratory School - Half Day Program	\$6,410
OISE/UT- Laboratory School - Full Day Program	\$9,995
OISE/UT- Laboratory School - Bloorview MacMillan	\$9,655

---

# Part E

## **Graduates**

Graduates by Region	54
Number of Degree Affiliations by College or Faculty	55
Total Annual Gifts Received	56
Total Annual Gifts Received: Source of Donations	57

**GRADUATES BY REGION***As of Fall 2007*

	<b>NUMBER OF LIVING</b>	<b>PERCENTAGE OF LIVING</b>
<b>Canada</b>		
Ontario		
Metro Toronto	201,343	45.0%
Central Ontario	119,912	26.8%
Southwestern Ontario	22,897	5.1%
Eastern Ontario	21,545	4.8%
Northern Ontario	7,841	1.8%
<b>Subtotal Ontario</b>	<b>373,538</b>	<b>83.4%</b>
Rest of Canada		
British Columbia	11,699	2.6%
Alberta	6,676	1.5%
Quebec	5,539	1.2%
Nova Scotia	2,502	0.6%
Manitoba	2,056	0.5%
Saskatchewan	1,537	0.3%
New Brunswick	1,079	0.2%
Newfoundland	1,079	0.2%
Prince Edward Island	301	0.1%
Northwest Territories	175	0.1%
Yukon Territory	117	
Nunavut	29	
Unknown within Canada	763	0.2%
<b>Canada Total</b>	<b>407,090</b>	<b>90.9%</b>
<b>United States Total</b>	21,719	4.9%
<b>International</b>	18,812	4.2%
<b>International Total</b>	<b>40,531</b>	<b>9.1%</b>
<b>Grand Total</b>	<b>447,621</b>	<b>100.0%</b>

The number of individuals (both living and deceased) who have graduated from the University of Toronto is 516,320.

Note: Regional Breakdown is based on data as at November 08, 2007



**NUMBER OF DEGREE AFFILIATIONS  
BY COLLEGE OR FACULTY**

*As of Fall 2007*

	<b>NUMBER OF DEGREE AFFILIATIONS</b>
<b>Arts &amp; Science Programs</b>	
<i><b>Constituent Colleges:</b></i>	
Innis College	7,688
New College	18,517
University College	46,935
Woodsworth College	18,713
<i><b>Federated Colleges:</b></i>	
St. Michael's College	30,771
Trinity College	18,386
Victoria College	40,405
University of Toronto at Mississauga	32,921
University of Toronto at Scarborough	31,054
<b>Other Faculties</b>	
Applied Science & Engineering	47,462
Architecture, Landscape & Design	3,557
Dentistry	10,886
Forestry	2,821
Graduate Studies/	
Graduate Institutes & Centres	101,845
Information Studies	6,049
Joseph L. Rotman School of Management	10,454
Law	8,083
Medicine, Doctor of	14,866
Other Medicine	15,392
Music	5,145
Nursing	10,421
OISE/UT:	
Undergraduate	48,223
Graduate	23,215
Institute of Child Study	2,040
Pharmacy	10,798
Physical & Occupational Therapy	6,759
Physical Education & Health	4,998
Social Work	7,739
Woodsworth Certificate & Diploma	6,867

**Notes:**

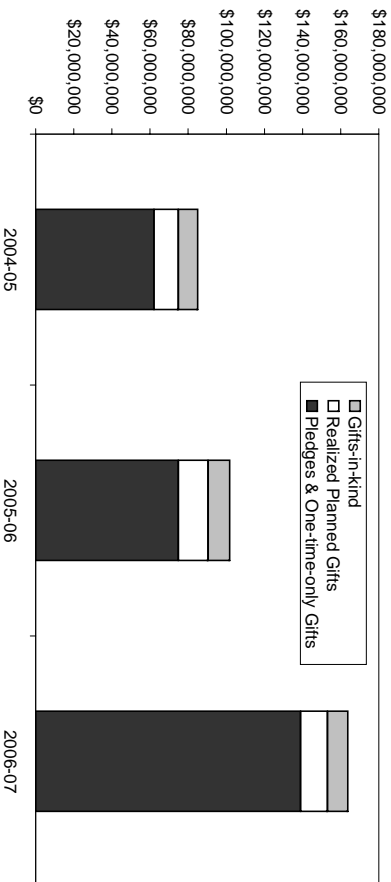
Honorary degrees are excluded.

Graduates with multiple degrees are counted in more than one constituency.

A single degree may be affiliated with more than one constituency.

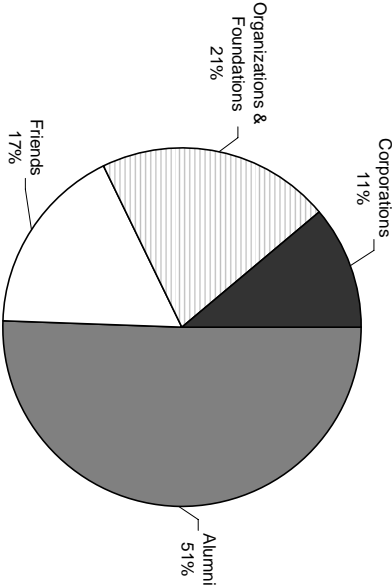
Does not include Toronto School of Theology.

**TOTAL ANNUAL GIFTS RECEIVED**  
*2004-05 to 2006-07*



**PERCENTAGE OF PLEDGE DOLLARS BY DONOR SECTOR**  
2006-07

**Total Value: \$163,640,822**





# Part F

## Student Awards

Undergraduate Student Support : Admission Scholarships, In-Course Scholarships and Bursaries by Faculty and College	60
OSAP and University of Toronto Advanced Planning for Students program (UTAPS) by Faculty and College	62
Graduate Student Support by Source	64
Graduate Student Support by School of Graduate Studies Division	65

2006-07  
**UNDERGRADUATE STUDENT SUPPORT: ADMISSION SCHOLARSHIPS, IN-COURSE SCHOLARSHIPS AND BURSARIES**

FACULTY / COLLEGE	ADMISSION SCHOLARSHIPS		IN-COURSE SCHOLARSHIPS		BURSARIES	
	Number	Value (\$)	Number	Value (\$)	Number	Value (\$)
Applied Science and Engineering	381	\$1,012,657	207	\$487,122	2,169	\$6,397,562
Arts and Science, St. George						
Inis College	29	118,983	175	211,473	235	537,855
New College	83	234,858	252	274,736	693	1,540,949
University College	198	432,444	592	652,674	644	1,472,559
Woodsworth College	19	81,500	129	122,702	1,424	2,265,659
St. Michael's College	49	182,000	191	292,626	446	915,820
Trinity College	155	405,486	465	560,763	218	508,644
Victoria College	140	459,185	499	557,307	663	1,264,967
Dentistry	3	3,491	71	38,831	249	872,788
Law	20	27,560	69	80,704	479	2,151,887
Medicine	4	5,778	267	193,049	937	3,728,941
Radiation Sciences	0	0	2	3,000	120	128,705
Music	22	70,823	99	128,071	177	319,669

**UNDERGRADUATE STUDENT SUPPORT: ADMISSION SCHOLARSHIPS, IN-COURSE SCHOLARSHIPS AND BURSARIES**

(continued)

2006-07

FACULTY / COLLEGE	ADMISSION SCHOLARSHIPS		IN-COURSE SCHOLARSHIPS		BURSARIES	
	Number	Value (\$)	Number	Value (\$)	Number	Value (\$)
Nursing	7	13,268	34	33,850	152	393,615
OISE/UT Undergraduate	12	24,824	17	22,348	447	1,006,041
Pharmacy	18	13,698	105	81,468	885	1,615,160
Physical Education and Health	5	14,341	34	43,806	71	86,798
Transitional Year Program	0	0	15	3,838	163	367,879
U of T at Mississauga	237	356,005	174	149,932	1,027	2,371,821
U of T at Scarborough	206	267,724	287	311,373	1,569	3,515,562
<b>Total</b>	<b>1,588</b>	<b>\$3,724,626</b>	<b>3,684</b>	<b>\$4,249,672</b>	<b>12,768</b>	<b>\$31,462,881</b>

**OSAP AND UNIVERSITY OF TORONTO ADVANCED PLANNING FOR STUDENTS PROGRAM (UTAPS) BY FACULTY AND COLLEGE**  
2006-07

FACULTY / COLLEGE	OSAP APPLICANTS AS A PERCENTAGE OF FULL-TIME ENROLLMENT		OSAP		UTAPS	
	47%	Number	Value (\$)	Number	Value (\$)	
Applied Science and Engineering		1,690	12,053,373	1,608	5,164,346	
Arts and Science, St. George						
Innis College	35%	453	3,888,538	66	200,881	
New College	38%	1,283	11,175,409	184	513,167	
University College	37%	1,268	10,905,202	173	462,900	
Woodsworth College	44%	1,557	15,343,604	295	649,565	
St. Michael's College	32%	1,054	8,967,054	139	351,300	
Trinity College	34%	413	3,480,019	70	216,500	
Victoria College	38%	1,035	8,706,196	135	379,250	
Dentistry	62%	189	2,320,544	189	780,429	
Law	51%	276	2,438,191	see note 2		
Management	21%	130	1,148,697	see note 2		
Medicine	70%	537	6,537,051	see note 2		
Radiation Sciences	56%	206	2,568,641	42	51,600	
Music	33%	109	1,009,105	26	53,200	



**OSAP AND UNIVERSITY OF TORONTO ADVANCED PLANNING FOR STUDENTS PROGRAM (UTAPS) BY FACULTY  
AND COLLEGE (continued)**  
2006-07

FACULTY / COLLEGE	OSAP APPLICANTS AS A PERCENTAGE OF FULL-TIME ENROLLMENT		OSAP		UTAPS	
	Percentage	Number	Value (\$)	Number	Value (\$)	Value (\$)
Nursing	60%	160	2,038,123	61	217,850	
OISE/UT Undergraduate	39%	408	4,473,650	151	300,800	
OISE/UT Graduate	18%	168	1,968,563	129	464,750	
Pharmacy	55%	444	3,641,510	437	1,058,985	
Physical Education and Health	38%	159	1,365,808	13	15,050	
School of Graduate Studies	14%	912	9,635,190	749	1,846,950	
Transitional Year Program	87%	58	711,574	26	66,900	
U of T at Mississauga	40%	3,077	24,360,557	594	1,744,200	
U of T at Scarborough	51%	4,029	32,482,564	768	2,503,302	
<b>Total</b>	<b>38%</b>	<b>19,615</b>	<b>171,219,163</b>	<b>5,855</b>	<b>17,041,925</b>	

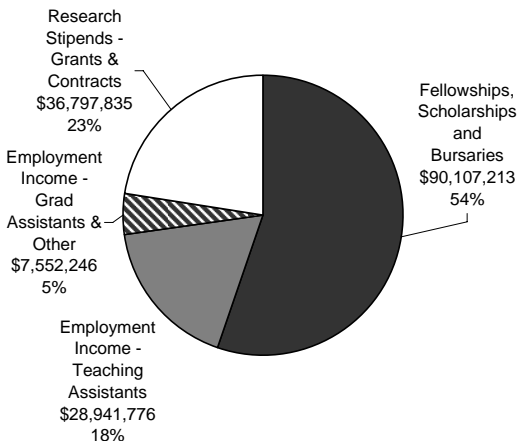
**Notes:**

1. UTAPS for School of Graduate Studies are also included in the totals shown in Graduate Student Support by Graduate Studies Division.
2. UTAPS at Law, Management and Medicine is distributed as part of their grants programs and are not included above.
3. UTAPS data in this table refers to grants awarded to OSAP recipients only.

## GRADUATE STUDENT SUPPORT BY SOURCE

2006-07

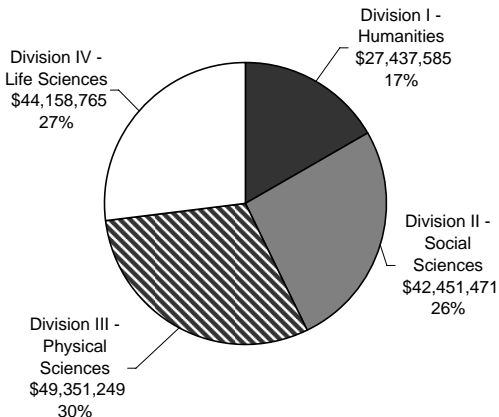
Total \$163,399,070\*



## GRADUATE STUDENT SUPPORT BY SCHOOL OF GRADUATE STUDIES DIVISION

2006-07

Total \$163,399,070\*



\*Does not include updated information on research stipends from affiliated teaching hospitals.

# Part G

## Faculty and Administrative Staff

Distribution of Full-Time Appointed Tenured/Tenure Stream Faculty by Major Division and Main Appointment	66
Distribution of Full-Time Tenured/Tenure Stream Faculty by Rank and Gender	67
Age Distribution of Tenured/Tenure Stream Faculty	67
Distribution of Full and Part-Time ( $\geq 25\%$ ) Academic Staff and Librarians by Rank and Gender	68
All Faculty with Teaching/Research Responsibilities	69
Distribution of Full and Part-Time Administrative and Union Staff	70
Operating Fund Full-Time Equivalent Staff	72

**DISTRIBUTION OF FULL-TIME APPOINTED TENURED/TENURE  
STREAM FACULTY BY MAJOR DIVISION  
AND MAIN APPOINTMENT**

All Sources of Funding

October 2006

<b>DIVISION</b>	<b>MALE</b>	<b>FEMALE</b>	<b>TOTAL</b>
Applied Science and Engineering	172	17	189
Architecture, Landscape, and Design	11	1	12
Arts and Science*	469	199	668
Dentistry	37	7	44
Education (OISE/UT)	54	76	130
Forestry	11	2	13
Information Studies	8	7	15
Law	29	20	49
Management**	64	10	74
Medicine	110	70	180
Music	16	10	26
Nursing	1	19	20
Pharmacy	15	10	25
Physical Education and Health	8	5	13
School of Graduate Studies	13	4	17
Social Work	7	12	19
U of T at Mississauga	147	56	203
U of T at Scarborough	111	50	161
<b>Total</b>	<b>1,283</b>	<b>575</b>	<b>1,858</b>

\* Arts & Science includes Transitional Year Program and the St. George campus colleges (Innis, New, University, Woodsworth, St. Michael's, Trinity, Victoria).

\*\* Management only contains Joseph L. Rotman School of Management.

**DISTRIBUTION OF FULL-TIME TENURED/TENURE STREAM  
FACULTY BY RANK AND GENDER**

All Sources of Funding

October 2006

<b>RANK</b>	<b>MALE</b>	<b>FEMALE</b>	<b>TOTAL</b>
Professor	626	169	795
Associate Professor	380	225	605
Assistant Professor	271	178	449
Assistant Professor (conditional)	6	3	9
<b>Total</b>	<b>1,283</b>	<b>575</b>	<b>1,858</b>

Note: Includes Faculties of Medicine and Dentistry.

**AGE DISTRIBUTION OF FULL-TIME TENURED/TENURE  
STREAM FACULTY**

October 2006

<b>RANK</b>	<b>AVERAGE AGE</b>
Professor	54.9
Associate Professor	47.3
Assistant Professor	37.4
Assistant Professor (conditional)	29.1

Note: Total number of Full-time Tenured/Tenure Stream  
Faculty = 1,858.

**DISTRIBUTION OF FULL AND PART-TIME (>=25%) ACADEMIC STAFF AND LIBRARIANS BY RANK AND GENDER**

All Sources of Funding

October 2006

RANK	FULL-TIME		
	Male	Female	Total
Professor	747	196	943
Associate Professor	485	272	757
Assistant Professor	354	247	601
Assistant Professor (cond)	7	4	11
Lecturer (medical)	1	4	5
Instructor	7	5	12
Senior Lecturer/Lecturer	105	125	230
Senior Tutor/Tutor	11	11	22
<b>Sub-Total</b>	<b>1,717</b>	<b>864</b>	<b>2,581</b>
Librarian	39	101	140
<b>Total</b>	<b>1,756</b>	<b>965</b>	<b>2,721</b>

RANK	PART-TIME		
	Male	Female	Total
Professor	56	15	71
Associate Professor	43	21	64
Assistant Professor	35	41	76
Assistant Professor (cond)			0
Lecturer (medical)	1	4	5
Instructor			0
Senior Lecturer/Lecturer	30	49	79
Senior Tutor/Tutor	2	3	5
<b>Sub-Total</b>	<b>167</b>	<b>133</b>	<b>300</b>
Librarian	4	7	11
<b>Total</b>	<b>171</b>	<b>140</b>	<b>311</b>

**DISTRIBUTION OF FULL AND PART-TIME (>=25%) ACADEMIC STAFF AND LIBRARIANS BY RANK AND GENDER**(continued)

All Sources of Funding

October 2006

RANK	TOTAL		
	Male	Female	Total
Professor	803	211	1,014
Associate Professor	528	293	821
Assistant Professor	389	288	677
Assistant Professor (cond)	7	4	11
Lecturer (medical)	2	8	10
Instructor	7	5	12
Senior Lecturer/Lecturer	135	174	309
Senior Tutor/Tutor	13	14	27
<b>Sub-Total</b>	<b>1,884</b>	<b>997</b>	<b>2,881</b>
Librarian	43	108	151
<b>Total</b>	<b>1,927</b>	<b>1,105</b>	<b>3,032</b>

Notes:

1. Includes Faculty of Medicine and Dentistry.
2. Includes both tenured/tenure stream and non-tenure stream professorial staff.
3. Starting in July 2005 there was a reclassification of those previously reported under the teaching stream (Sr Lecturers/Lecturers). Those on contracts of less than 12 months are now classified as non-academics, CUPE 3902 Unit 3, and are excluded from the faculty counts.

**ALL ACTIVE FACULTY WITH TEACHING/RESEARCH RESPONSIBILITIES**

Fall 2006

	FULL-TIME	PART-TIME	TOTAL
Professoriate	1,891	268	2,159
Teaching Stream/Other	282	98	380
Clinical/Status Only/Adjunct	2,109	3,352	5,461
Sessional/Stipendiary		1,097	1,097
<b>Total</b>	<b>4,282</b>	<b>4,815</b>	<b>9,097</b>

**DISTRIBUTION OF FULL AND PART-TIME ADMINISTRATIVE  
AND UNION STAFF**

September 2006

<b>EMPLOYEE GROUP</b>	<b>FULL-TIME</b>		
	<b>Male</b>	<b>Female</b>	<b>Total</b>
<b>Non-Unionized Employees</b>			
ESL Instructors	10	16	26
Research Associates	157	67	224
USW-exempt Admin staff*	311	485	796
<b>Total non-unionized employees</b>	<b>478</b>	<b>568</b>	<b>1,046</b>
<b>Unionized Employees</b>			
89 Chestnut St. Hospitality Workers	43	31	74
Administrative staff*	907	2000	2,907
Child Care Workers	3	23	26
Library Workers	55	105	160
Operating Engineers and Building Management Systems Technicians	82	2	84
Police	30	13	43
Research Associates & Officers	1	6	7
Service Workers	332	222	554
Sessional Lecturers	0	0	0
Teaching Assistants and OISE Graduate Assistants	0	0	0
Trades and Services**	65	0	65
<b>Total unionized employees</b>	<b>1,518</b>	<b>2,402</b>	<b>3,920</b>
<b>Total</b>	<b>1,996</b>	<b>2,970</b>	<b>4,966</b>
<b>EMPLOYEE GROUP</b>	<b>PART-TIME</b>		
	<b>Male</b>	<b>Female</b>	<b>Total</b>
<b>Non-Unionized Employees</b>			
ESL Instructors	0	1	1
Research Associates	14	16	30
USW-exempt Admin staff*	5	28	33
<b>Total non-unionized employees</b>	<b>19</b>	<b>45</b>	<b>64</b>
<b>Unionized Employees</b>			
89 Chestnut St. Hospitality Workers	0	0	0
Administrative staff*	46	209	255
Child Care Workers	0	5	5
Library Workers	6	11	17
Operating Engineers and Building Management Systems Technicians	0	0	0
Police	0	0	0
Research Associates & Officers	1	4	5
Service Workers	15	6	21
Sessional Lecturers	323	311	634
Teaching Assistants and OISE Graduate Assistants	1,918	1,814	3,732
Trades and Services**	0	0	0
<b>Total unionized employees</b>	<b>2,309</b>	<b>2,360</b>	<b>4,669</b>
<b>Total</b>	<b>2,328</b>	<b>2,405</b>	<b>4,733</b>



**DISTRIBUTION OF FULL AND PART-TIME ADMINISTRATIVE  
AND UNION STAFF (continued)**

September 2006

<b>EMPLOYEE GROUP</b>	<b>ALL</b>		
	<b>Male</b>	<b>Female</b>	<b>Total</b>
<b>Non-Unionized Employees</b>			
ESL Instructors	10	17	27
Research Associates	171	83	254
USW-exempt Admin staff*	316	513	829
<b>Total non-unionized employees</b>	<b>497</b>	<b>613</b>	<b>1,110</b>
<b>Unionized Employees</b>			
89 Chestnut St. Hospitality Workers	43	31	74
Administrative staff*	953	2209	3,162
Child Care Workers	3	28	31
Library Workers	61	116	177
Operating Engineers and Building Management Systems Technicians	82	2	84
Police	30	13	43
Research Associates & Officers	2	10	12
Service Workers	347	228	575
Sessional Lecturers	323	311	634
Teaching Assistants and OISE Graduate Assistants	1,918	1,814	3,732
Trades and Services**	65	0	65
<b>Total unionized employees</b>	<b>3,827</b>	<b>4,762</b>	<b>8,589</b>
<b>Total</b>	<b>4,324</b>	<b>5,375</b>	<b>9,699</b>

\* Excludes Non University of Toronto Departments.

\*\* Trades and Services includes Carpenters, Electricians, Machinists and Locksmiths, Painters, Plumbers, Steam fitters and Sprinkler fitters, Sheet Metal Workers, Stage Hands.

**OPERATING FUND FULL-TIME EQUIVALENT STAFF**

2007-08 Budget

<b>DIVISION</b>	<b>ACADEMIC</b>	<b>NON-ACADEMIC*</b>
Applied Science and Engineering	229.97	209.15
Architecture, Landscape, and Design	23.74	16.70
Arts & Science**	912.40	496.81
Colleges***	19.24	102.7
Dentistry	72.47	162.52
Forestry	14.60	7.00
Graduate Centres and Institutes	11.53	20.50
Information Studies	19.60	51.96
Law	53.00	63.57
Management	93.90	126.60
Medicine	711.30	414.66
Mississauga, University of Toronto at	268.19	120.82
Music	46.92	30.50
Nursing	38.85	19.00
OISE/UT	173.71	178.05
Pharmacy	43.56	37.05
Physical Education and Health	17.32	8.69
Scarborough, University of Toronto at	242.17	81.37
School of Continuing Studies	0.00	68.52
School of Graduate Studies	6.10	44.50
Social Work	22.51	13.30
Transitional Year Program	10.75	2.50
<b>Subtotal</b>	<b>3,031.83</b>	<b>2,276.47</b>
Academic Services	4.00	603.99
Campus and Student Services	12.93	338.28
Central Administration	11.90	853.04
Facilities and Services	0.00	769.92
Other Academic Costs	0.00	1.00
<b>Grand Total</b>	<b>3,060.66</b>	<b>4,842.70</b>

\* Librarians, Admin and Union staff are included in the non-academic group.

\*\*Arts and Science includes Innis, New, St. Michael's, University College Programs related to Arts & Science.

\*\*\*Colleges include Innis, New, University, Woodsworth programs and resources independent of Arts & Science

Note: These are budgeted FTEs which include TBA's.

# Part H

## Library

Library Collections	74
Number of Loans	75
Number of Computers in the Library	75
Digital Library E-Resources	75
Number of Electronic Articles Downloaded	76

**LIBRARY COLLECTIONS**  
2006-07

There are 32 libraries in the University of Toronto Library System.

<b>COLLECTIONS</b>	<b>CENTRAL LIBRARIES</b>	<b>LOCAL LIBRARIES</b>	<b>SCARBOROUGH/ MISSISSAUGA</b>	<b>FEDERATED/ AFFILIATED</b>	<b>DIGITAL LIBRARY**</b>	<b>TOTAL</b>
Books	7,767,688	1,019,348	646,301	1,322,567	360,382	11,116,286
Cartographic Materials	243,901	8	36,607	91		280,607
CD-ROM (Bibliog & Text)	4,179	892	264	662		5,997
Computer Data Files	847,850	400	0	6		848,256
Films & Videos	25,610	2,113	836	3,517		32,076
Graphic Materials	269,733	372,610	63,374	71,632		777,349
Microforms	5,171,602	131,996	37,984	130,186		5,471,768
Sheet Music	9,927	55,816	1,358	126		57,300
Sound Recording		184,794	4,131	3,769		202,621
Other Formats	30,336	33,269	274	547		65,162
<b>Total</b>	<b>14,370,826</b>	<b>1,801,246</b>	<b>791,129</b>	<b>1,533,103</b>	<b>361,118</b>	<b>18,857,422</b>
Current Serials	20,706	5,596	3,044	2,739	45,060	77,145
Manuscripts (Metres)	11,872	37	0	134		12,043

\* Materials on transfer from Central to Local Libraries are shown in the counts for Local Libraries where they are located. Bound volumes of subscriptions are included in the Book counts.

Zoology was closed in 2006-07 and the materials transferred to Gerstein Sciences Information Centre and the Noranda Earth Sciences Library. Pharmacy print collections were transferred to Gerstein.

\*\* Electronic resources (Books & Journals).

## NUMBER OF LOANS

2006-2007

Central Libraries	
Robarts Library	1,453,880
Gerstein Science Information Centre	232,798
OISE/UT Library	164,455
Fisher Library/Archives	17,058
Media Commons *	87,992
Branch Libraries	142,562
<b>Sub-Total</b>	<b>2,098,745</b>
Local Libraries**	
UTMississauga Library	239,424
UTScarborough Library	91,901
Federated/Affiliated Libraries	637,040
<b>Total</b>	<b>3,516,984</b>

\* Media Commons includes Audio Visual Library and Microtext

\*\* Local Libraries include some Hospital Consortium Libraries

## NUMBER OF COMPUTERS IN THE LIBRARY

April 30, 2007

Computers in the Network	2,377
Stand-Alone PC's	43
VT Terminals	0

## DIGITAL LIBRARY E-RESOURCES

April 30, 2007

	LICENSED*	PUBLIC**	TOTAL
Article Databases and Text Collections	624	92	716
e-Media	5	5	10
Journal Collections	21	0	21
E-Journals	37,137	4,841	41,978
PDA/Handheld	2	8	10
Reference Sources	986	107	1,093
Books	350,077	10,305	360,382
Newspapers and News Services	2,999	61	3,060
<b>Total</b>	<b>391,227</b>	<b>15,327</b>	<b>406,554</b>

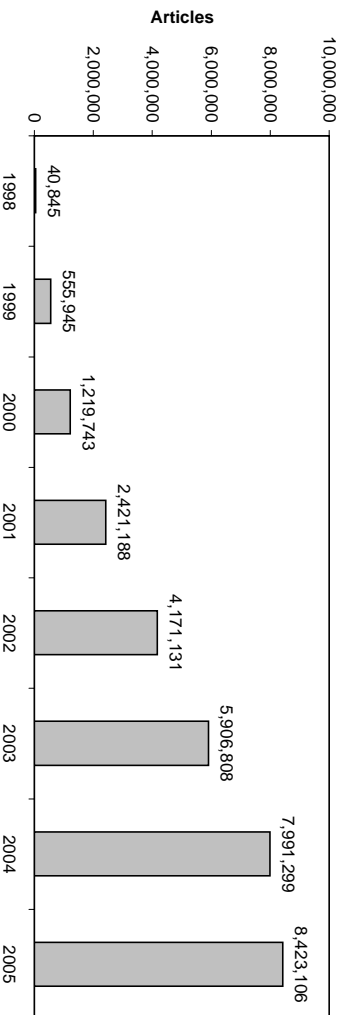
\* These items are available on the Internet for use by anyone.

\*\* These items are available on the Internet for use by anyone.

For current figures, see

<http://main.library.utoronto.ca/eir/EIRwhatsnew.cfm>

**NUMBER OF ELECTRONIC ARTICLES DOWNLOADED**  
1998-2005



Note: Data for 1998 to 2005 are adjusted to reflect revised data and data not previously available from publishers, aggregators and systems.

# Part I

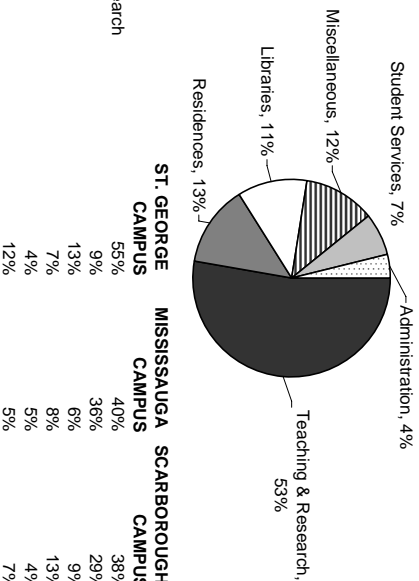
## Physical Plant

Usage of Assignable Space	78
Number of Buildings and Square Metres	79
Area of U of T Properties	80
Number of Parking Spaces	80
Number of Public Assembly Facilities	80
Number of University of Toronto Students in Residence	81

**USAGE OF ASSIGNABLE SPACE**

2006-07

**University of Toronto (all Campuses)**



Teaching & Research  
Residence  
Libraries  
Student Services  
Administration  
Miscellaneous

	<b>ST. GEORGE CAMPUS</b>	<b>MISSISSAUGA CAMPUS</b>	<b>SCARBOROUGH CAMPUS</b>
Teaching & Research	55%	40%	38%
Residence	9%	36%	29%
Libraries	13%	6%	9%
Student Services	7%	8%	13%
Administration	4%	5%	4%
Miscellaneous	12%	5%	7%

Note: **Student Services** includes: Athletics, Food Services, Bookstore and Merchandising and Health Services.

**Miscellaneous** includes: Plant Maintenance, Assembly & Exhibition Facilities, Common Use and Student Activity and Other University Facilities.

**Teaching and Research** includes: Classrooms, Teaching and Research Laboratories, Academic Services, Health Science Clinic Facilities, Central Services and Media Services.



**NUMBER OF BUILDINGS AND SQUARE METRES**  
2006-07 as at September 2007

	NUMBER OF BUILDINGS	NET ASSIGNABLE SQUARE METRES	NET SQUARE METRES	GROSS SQUARE METRES
<b>University</b>				
St. George	122	585,311	942,105	1,101,019
Leased St. George	5	3,052	3,786	4,255
Scarborough	26	59,394	91,945	107,293
Mississauga	46	82,977	141,061	157,045
<b>Total University</b>	<b>199</b>	<b>730,734</b>	<b>1,178,896</b>	<b>1,369,612</b>
<b>Federated Colleges and Massey</b>	<b>50</b>	<b>96,224</b>	<b>144,868</b>	<b>181,004</b>
<b>Grand Total</b>	<b>249</b>	<b>826,958</b>	<b>1,323,764</b>	<b>1,550,616</b>

Note: **Net Assignable Square Metres** is the sum of all areas on all floors of the building assigned to, or available for assignment to, an occupant, including every type of space functionally used by an occupant. **Net Square Metres** is the sum of all areas on all floors of the building, both assigned (see definition above) and non-assigned (ie corridors, stairs, mechanical rooms etc.) **Gross Area Square Metres** is the sum of all floors areas included within the outside faces of exterior walls, which have floor surfaces.

**AREA OF U OF T PROPERTIES**

2006-07

	<b>HECTARES</b>
<b>CAMPUSES</b>	
Downtown Campus	
St. George	51.3
Federated Colleges and Massey	17.3
<b>Total Downtown Campus</b>	<b>68.6</b>
<b>Scarborough</b>	<b>121.5</b>
<b>Mississauga</b>	<b>90.2</b>
<b>Total Campuses</b>	<b>280.3</b>
<b>OFF CAMPUS</b>	
David Dunlap Observatory	76.9
Aerospace	11.9
Joker's Hill	346.0
<b>Total Off Campus</b>	<b>434.8</b>
<b>Grand Total</b>	<b>715.1</b>

Notes:

1. Excludes Glendon and Huron/Sussex.
2. Total Downtown Campus includes St.George, Federated Colleges and Massey.

**NUMBER OF PARKING SPACES**

2006-07

	<b>NUMBER OF SPACES</b>
St. George	2,100
Scarborough	3,213
Mississauga	2,800
<b>Total</b>	<b>8,113</b>

**NUMBER OF PUBLIC ASSEMBLY FACILITIES**

2006-07

	<b>NUMBER OF FACILITIES</b>	<b>SEATING CAPACITY</b>
St. George Lecture Theatres / Hall*	46	10,838
St. George Auditorium	4	3,400
Dining Rooms and Cafeterias*	33	4,227
Varsity Arena	1	4,100

\* Including Federated Colleges.

**NUMBER OF UNIVERSITY OF TORONTO STUDENTS IN RESIDENCE**  
2006-07

	<b>NUMBER OF FIRST-YEAR STUDENTS</b>	<b>NUMBER OF STUDENTS</b>	<b>TOTAL SPACES</b>
<b>University of Toronto Residences</b>			
<b>St. George Including Federated Universities</b>			
89 Chestnut	379	848	1,022
Charles Street Apartments*	0	702	715
Graduate House	0	435	435
Innis College	203	327	327
New College	500	864	877
St. Michael's College	261	605	613
Trinity College	197	437	442
University College	425	801	801
Victoria University	326	786	786
Woodsworth College	225	368	368
<b>Total St. George</b>	<b>2,516</b>	<b>6,173</b>	<b>6,386</b>
<b>University of Toronto Mississauga</b>			
Graduate & Family Housing*	0	124	133
Undergraduate Housing	529	816	826
<b>Total U of T at Mississauga</b>	<b>529</b>	<b>940</b>	<b>959</b>
<b>University of Toronto Scarborough</b>	<b>348</b>	<b>765</b>	<b>765</b>
<b>Total University of Toronto Residences</b>			
	<b>3,393</b>	<b>7,878</b>	<b>8,110</b>
<b>Independent Campus Residences</b>			
Campus Co-Op	14	293	383
Knox College	0	100	103
Massey College	0	60	60
Neil-Wycik Co-Operative**	0	45	781
St. Vladimir Institute	0	35	46
Tartu College	36	355	450
Wycliffe College	0	80	81
<b>Total Independent Residences</b>	<b>50</b>	<b>968</b>	<b>1,904</b>
<b>Grand Total</b>	<b>3,443</b>	<b>8,846</b>	<b>10,014</b>

\* Premises house students and their family. Some families may include 2 students.

\*\* Premises house mainly Ryerson students.

Notes:

1. As of November 1, 2006.
2. Includes Toronto School of Theology students.



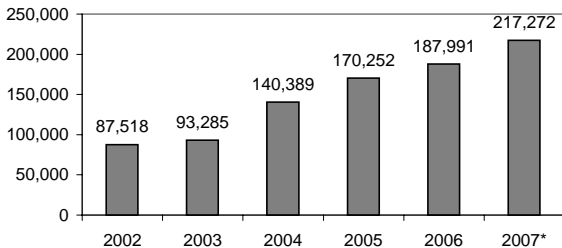
# Part J

## Computing and Communications

Number of UTORmail Accounts at Year End	84
Number of Messages Delivered by UTORmail Post Office	84
Number of Web Transactions	84
Institutional Internet Dial-in Services	
a) Dial-in Modem	85
b) Virtual Private Network (VPN)	85
Campus Wireless Network	85
Usage of Electronic Student Services	86

## NUMBER OF UTORmail ACCOUNTS AT YEAR END

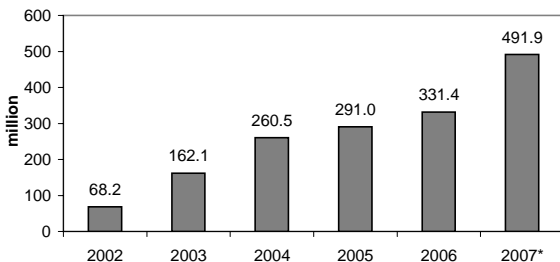
2002-2007



## NUMBER OF MESSAGES DELIVERED BY UTORmail POST OFFICE

2002-2007

(In Millions)

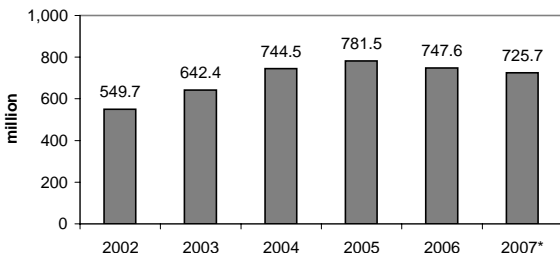


## NUMBER OF WEB TRANSACTIONS

For the institutional server [www.utoronto.ca](http://www.utoronto.ca)

2002-2007

(In Millions)



\*Note: 2007 figures represent counts up to November 30, 2007.

2002-2006 figures cover the period from January 1 to December 31 of each year.

**INSTITUTIONAL INTERNET DIAL-IN SERVICES***2002-2007***Dial-in Modem**

Up to 56,000 bits per second

<b>Date</b>	<b>Phone Lines</b>	<b>Active Users</b>	<b>Calls per Week</b>
November 2002	413	7,300	68,000
October 2003	333	5,600	52,000
October 2004	255	3,900	36,000
October 2005	124	2,400	21,000
October 2006	89	1,500	12,000
October 2007	47	900	7,600

**Virtual Private Network (VPN)\***

Provides 'direct' access to the UofT network.

<b>Date</b>	<b>Number of Users</b>
December 2004	0
December 2005	610
December 2006	1,153
November 2007	1,784

\*Service first became available in January 2005.

**CAMPUS WIRELESS NETWORK\****2002-2007*

<b>Date</b>	<b>Buildings</b>	<b>Access Points</b>	<b>Sessions per Week</b>
November 2002	15	118	4,500
October 2003	19	143	9,800
October 2004	24	244	14,000
October 2005	41	320	25,000
October 2006	66	495	42,000
October 2007	96	677	75,000

**USAGE OF ELECTRONIC STUDENT SERVICES***September 1, 2006 to August 31, 2007*

---

	<b>ROSI STUDENT WEB SERVICES rosi.utoronto.ca</b>
<b>ACTIVITY</b>	
<b>Accessing the System</b>	
Successful attempt to login	7,432,809
Unsuccessful attempt to login	1,389
Access suspended	6,088
Change PIN	55,351
Unsuccessful attempt to change PIN	2,178
Setup completed for PIN reactivation	25,299
Successful attempt to reactivate PIN	32,106
Unsuccessful attempt to reactivate PIN	9,790
Suspend PIN reactivation	5,487
<b>Maintaining Personal Information</b>	
Add bank information	2,906
Cancel bank information	125
Add new address	12,004
Change address	53,324
Add new contact information	2,993
Change contact information	1,878
Delete contact information	243
Add new telephone number	2,796
Change telephone number	4,426
Change e-mail address	66,968
<b>Choosing/Changing Academic Options</b>	
Add academic activity	632,881
Drop academic activity	346,351
Modify academic activity	220,742
Add waitlisted academic activity	140,339
Drop waitlisted academic activity	49,776
Modify waitlisted academic activity	5,417
List courses	4,644,486
Accept Subject POST	9,445
Add new Subject POST	52,167
Change Subject POST	8,699
Delete Subject POST	34,707
Cancel invited registration	342
Cancel registration/Deregister	5,885
Confirm graduation request	9,801
<b>Viewing Financial Information</b>	
View Financial Account - Invoice	644,998
View Financial Account - Detail	295,963
<b>Requesting/Paying for Transcripts</b>	
Request transcript, charged to account	14,906
Request transcript, paid electronically	33,411
Request transcript pending payment	39,575
Create electronic transcript invoice	38,009
Pay electronic transcript invoice	29,294
Unsuccessful electronic payment	3,006
<b>Participating in Campus Life</b>	
Submit an electronic vote	3,800

---



**Prepared by the Office of the Vice-President,  
Government, Institutional and Community Relations  
University of Toronto**

**Printed in Canada  
by SLG Group Commercial Printing  
2008**