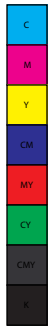


FACTS & FIGURES 2008



UNIVERSITY OF
TORONTO



Facts and Figures is prepared annually by the Office of the Assistant Vice-President, Government, Institutional and Community Relations. **Facts and Figures** provides answers to some of the most frequently asked questions about the University. It is designed and organized to serve as a useful and reliable source of reference information from year to year.

The reader of **Facts and Figures** should take care when attempting to use the enclosed information comparatively. While some definitions are common to other universities, many others are not. Our Office maintains some comparative databases and has access to others. Please contact us for assistance in using Facts and Figures comparatively.

Each year we try to improve **Facts and Figures** to make it as useful as possible. We are always grateful for suggestions for improvement.

Facts and Figures can also be accessed on the Internet at <http://www.utoronto.ca/aboutuoft/quickfacts/factsandfigures.htm>

Other Official Publications of the University can be found on the UofT accountability website:
<http://www.utoronto.ca/aboutuoft/accountabilityreports.htm>

Corinne Pask-Aubé was the manager of **Facts and Figures** for 2008. Corinne can be reached through e-mail at corinne.pask@utoronto.ca.

Contributors include: Brian Armstrong, Alicia Barker, Michelle Broderick, Mary Ellen Caskenette, Hung Sun Chan, Helen Choy, Aytan Farrokhyar, Phil Harper, Rick Haywood, Lari Langford, Helen Lasthiotakis, Maureen Lynham, Barry Murphy, Al Nausedas, Alex Nishri, José Sigouin, and George Taylor .

Daniel Atlin
Assistant Vice-President, Government, Institutional and Community Relations
Room 5, Simcoe Hall
27 King's College Circle
Toronto, Ontario
M5S 1A1
<http://www.universityrelations.utoronto.ca/gr.htm>

CONTENTS

Part A General	3
1. Organization of Senior Administration	
2. Major Academic Divisions	
3. Degrees, Diplomas and Certificates Offered by Division	
Part B Finances	15
University of Toronto Financial Statements	
1. Statement of Operations	
2. Changes in Surplus/Deficit	
3. Operating Fund Expense Summary	
4. Operating Fund: Academic Expense Summary	
5. Restricted Funds	
University of Toronto Budget Reports	
6. Expense Budget Summary	
7. Academic Costs	
Part C Research	25
1. Research Population	
2. Revenue from Externally Sponsored Research	
3. Academic Linkages between the University of Toronto and International Institutions	
4. Technology Transfer Activities:	
a) Invention Disclosures	
b) Spin-off Companies	
c) Industrial Contracts and Grants	
d) Government Funding Leveraged by Industrial Collaboration	
Part D Students	31
1. Enrolment by Campus and Faculty/College	
2. Enrolment by Program Mix and Degree Type	
3. Enrolment by Age and Gender Balance	
4. International Student Enrolment by Geographic Origin	
5. International Student Enrolment by Geographic Origin: Five-Year Trend	
6. Ten-Year Enrolment Trends, All Students	
7. Gender Balance of Graduate and Undergraduate Enrolments by Field of Study	
8. Undergraduate Intake by Faculty	
9. Graduate Intake by Faculty	
10. Total Intake	
11. Degrees Awarded by Field of Study and Gender	
12. Tuition Fee Schedule for Domestic and International Students	
13. Tuition Fee Schedule for Self-Funded Programs	
Part E Graduates	53
1. Graduates by Region	
2. Number of Degree Affiliations by College or Faculty	
3. Total Annual Gifts Received	
4. Total Annual Gifts Received: Source of Donations	

CONTENTS (continued)

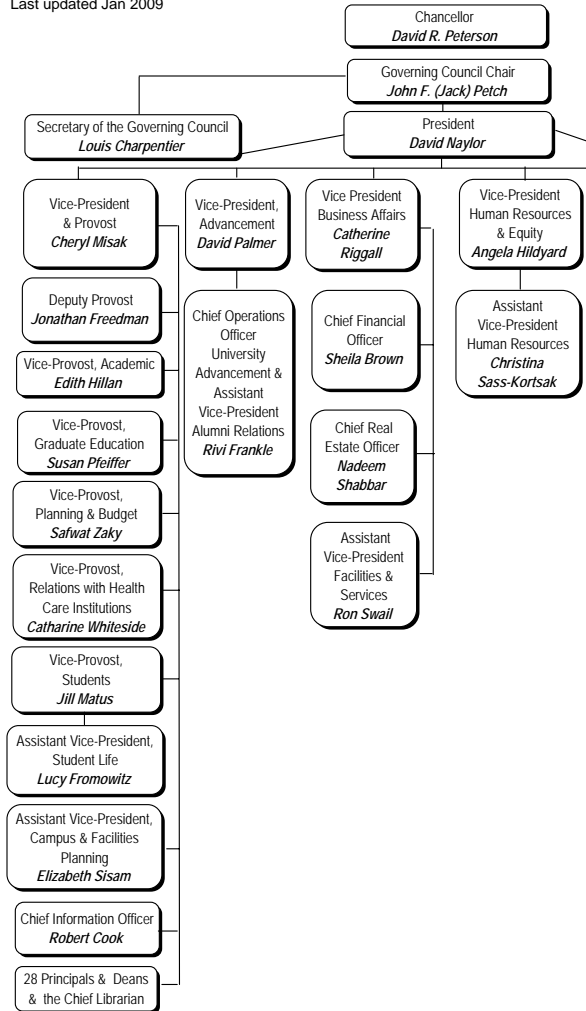
Part F Student Awards	59
1. Undergraduate Student Support : Admission Scholarships, In Course Scholarships and Bursaries by Faculty and College	
2. OSAP and University of Toronto Advanced Planning for Students Program (UTAPS) by Faculty and College	
3. Graduate Student Support by Source	
4. Graduate Student Support by S.G.S. Division	
Part G Faculty and Administrative Staff	65
1. Distribution of Full-Time Appointed Tenured/Tenure Stream Faculty by Major Division and Main Appointment	
2. Distribution of Full-Time Tenured/Tenure Stream Faculty by Rank and Gender	
3. Age Distribution of Tenured/Tenure Stream Faculty	
4. Distribution of Full and Part-Time (>=25%) Academic Staff and Librarians by Rank and Gender	
5. All Faculty with Teaching/Research Responsibilities	
6. Distribution of Full and Part-Time Administrative and Union Staff	
7. Operating Fund Full-Time Equivalent Staff	
Part H Library	73
1. Library Collections	
2. Number of Loans	
3. Number of Computers in the Library	
4. Digital Library E-Resources	
Part I Physical Plant	77
1. Usage of Assignable Space	
2. Number of Buildings and Square Metres	
3. Area of U of T Properties	
4. Number of Parking Spaces	
5. Number of Public Assembly Facilities	
6. Number of University of Toronto Students in Residence	
Part J Computing and Communications	83
1. Number of UTOEmail Accounts at Year End	
2. Number of Messages Delivered by UTOEmail Post Office	
3. Number of Web Transactions	
4. Institutional Internet Dial-in Services	
a) Dial-in Modem	
b) Virtual Private Network (VPN)	
5. Campus Wireless Network	
6. Usage of Electronic Student Services	

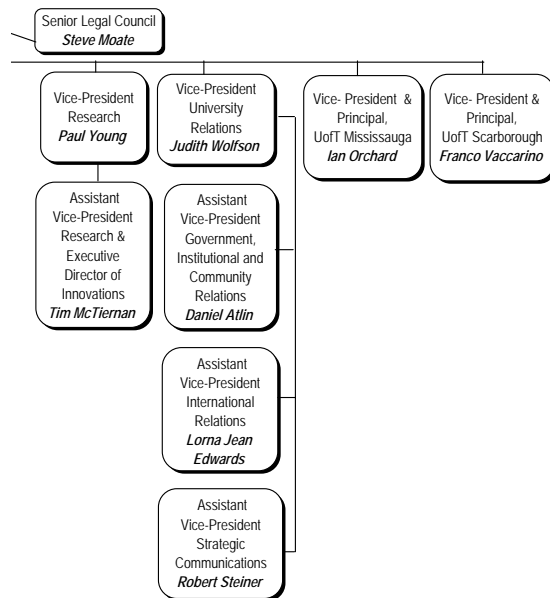
Part A General

Organization of Senior Administration	4
Major Academic Divisions	6
Degrees, Diplomas and Certificates Offered by Division	10

ORGANIZATION OF SENIOR ADMINISTRATION

2008-09
Last updated Jan 2009





MAJOR ACADEMIC DIVISIONS

2008-09

Faculty of Applied Science and Engineering

Aerospace Studies, Institute for
Chemical Engineering and Applied Chemistry, Department of
Civil Engineering, Department of
Edward S. Rogers Sr. Electrical and Computer Engineering,
Department of
Engineering Science, Division of
Environmental Engineering and Energy Systems, Division of
Materials Science and Engineering, Department of
Mechanical and Industrial Engineering, Department of

John H. Daniels Faculty of Architecture, Landscape, and Design

Faculty of Arts and Science (St. George Campus)

Anthropology, Department of
Art, Department of
Astronomy & Astrophysics, Department of
Astronomy & Astrophysics, Dunlap Institute for
Cell and Systems Biology, Department of
Chemistry, Department of
Cinema Studies Institute
Classics, Department of
Comparative Literature, Centre for
Computer Science, Department of
East Asian Studies, Department of
Ecology and Evolutionary Biology, Department of
Economics, Department of
English, Department of
French, Department of
Geography, Department of
Geology, Department of
Germanic Languages & Literatures, Department of
History, Department of
History & Philosophy of Science & Technology, Institute for
International Studies, School of
Italian Studies, Department of
Linguistics, Department of
Mathematics, Department of
Medieval Studies, Centre for
Near & Middle Eastern Civilizations, Department of
Philosophy, Department of
Physics, Department of
Political Science, Department of
Psychology, Department of
Religion, Department of
Sexual Diversity Studies, Mark S. Bonham Centre for
Slavic Languages & Literatures, Department of
Sociology, Department of
Spanish & Portuguese, Department of
Statistics, Department of
Theoretical Astrophysics, Canadian Institute for (CITA)
Women's Studies and Gender Studies, Institute for

MAJOR ACADEMIC DIVISIONS (continued)
2008-09

Faculty of Arts and Science - Colleges (St. George Campus)

Constituent Colleges:

Innis College
New College
University College
Woodsworth College

Federated Colleges:

St. Michael's College
Trinity College
Victoria College

School of Continuing Studies

Faculty of Dentistry

Faculty of Forestry

School of Graduate Studies

Division I - Humanities
Division II - Social Sciences
Division III - Physical Sciences
Division IV - Life Sciences
Criminology, Centre for
Drama, Graduate Centre for the Study of
Industrial Relations and Human Resources, Centre for

Faculty of Information

Faculty of Law

Joseph L. Rotman School of Management

Faculty of Medicine

Anesthesia, Department of
Banting and Best Department of Medical Research
Biochemistry, Department of
Family and Community Medicine, Department of
Health Policy, Management and Evaluation, Department of
Immunology, Department of
Laboratory Medicine and Pathobiology, Department of
Medical Biophysics, Department of
Medical Imaging, Department of
Medicine, Department of
Molecular Genetics, Department of
Nutritional Sciences, Department of
Obstetrics and Gynaecology, Department of
Occupational Science and Occupational Therapy, Department of
Ophthalmology and Vision Sciences, Department of
Otolaryngology - Head and Neck Surgery, Department of

MAJOR ACADEMIC DIVISIONS (continued)
2008-09

Faculty of Medicine (continued)

Paediatrics, Department of
Pharmacology and Toxicology, Department of
Physical Therapy, Department of
Physiology, Department of
Psychiatry, Department of
Public Health Sciences, Department of
Radiation Oncology, Department of
Rehabilitation Science, Department of
Speech-Language Pathology, Department of
Surgery, Department of

Faculty of Music

Lawrence S. Bloomberg Faculty of Nursing

Ontario Institute for Studies in Education (OISE)

Adult Education and Counselling Psychology, Department of
Child Study, Institute of
Curriculum, Teaching and Learning, Department of
Human Development and Applied Psychology, Department of
Sociology and Equity Studies in Education, Department of
Theory and Policy Studies in Education, Department of

Leslie L. Dan Faculty of Pharmacy

Faculty of Physical Education and Health

Dalla Lana School of Public Health

School of Public Policy and Governance

Factor-Inwentash Faculty of Social Work

Transitional Year Program

MAJOR ACADEMIC DIVISIONS (continued)
2008-09

University of Toronto at Mississauga

Anthropology, Department of
Biology, Department of
Chemical and Physical Sciences, Department of
Communication and Culture, Institute of
Economics, Department of
English and Drama, Department of
Geography, Department of
Historical Studies, Department of
Language Studies, Department of
Management, Department of
Mathematical and Computational Sciences, Department of
Philosophy, Department of
Political Science, Department of
Professional Graduate Programs Centre
Psychology, Department of
Sociology, Department of

University of Toronto at Scarborough

Biological Sciences, Department of
Computer & Mathematical Sciences, Department of
Humanities, Department of
Management, Department of
Physical & Environmental Sciences, Department of
Psychology, Department of
Social Sciences, Department of

Woodsworth College

Multi-Faculty Centres and Institutes

Bioethics, Joint Centre for
Biomaterials and Biomedical Engineering, Institute of
Diaspora and Transnational Studies, Centre for
Environment, Centre for
European, Russian and Eurasian Studies, Centre for

Notes:

Only Centres and Institutes in the EDU A and EDU B categories are included.

An EDU A may enrol students and has faculty appointing rights.

An EDU B may enrol students and has no (or limited) faculty appointment rights.

DEGREES, DIPLOMAS AND CERTIFICATES OFFERED BY DIVISION
2008-09

Faculty of Applied Science and Engineering:

Undergraduate

Bachelor of Applied Science	B.A.Sc.
Bachelor of Applied Science in Engineering Science	B.A.Sc.Eng.Sci.

Graduate

Master of Applied Science	M.A.Sc.
Master of Engineering	M.Eng.
Master of Engineering in Advanced Design and Manufacturing	M.Eng.D.M.
Master of Engineering in Telecommunications	M.Eng.Tel.
Doctor of Philosophy	Ph.D.

John H. Daniels Faculty of Architecture, Landscape, and Design:

Graduate

Master of Architecture	M.Arch.
Master of Landscape Architecture	M.L.A.
Master of Urban Design	M.U.D.

Faculty of Arts and Science, St. George Campus:

Undergraduate

Honours Bachelor of Arts	H.B.A.
Honours Bachelor of Science	H.B.Sc.
Bachelor of Commerce	B.Com.

Graduate

Master of Arts (tri-campus)	M.A.
Master of Science (tri-campus)	M.Sc.
Master of Financial Economics (with Rotman School of Management)	M.F.E.
Master of Science in Planning	M.Sc.Pl.
Master of Urban Design Studies	M.U.D.S.
Master of Visual Studies	M.V.S.
Doctor of Philosophy (tri-campus)	Ph.D.

Faculty of Dentistry:

Undergraduate

Doctor of Dental Surgery	D.D.S.
Certificate of Qualification in Dentistry	Cert.Q.P.Dent.

Graduate

M.Sc./Dental Specialty Program	M.Sc.
Doctor of Philosophy	Ph.D.
Doctor of Dentistry and Doctor of Philosophy combined program	D.D.S./Ph.D.

Faculty of Forestry:

Graduate

Master of Forest Conservation	M.F.C.
Master of Science in Forestry	M.Sc.F.
Doctor of Philosophy	Ph.D.

DEGREES, DIPLOMAS AND CERTIFICATES OFFERED BY DIVISION

(continued)

2008-09

School of Graduate Studies:**Graduate**

Master of Arts	M.A.
Master of Science	M.Sc.
Master of Industrial Relations and Human Resources	M.I.R.H.R.
Doctor of Philosophy	Ph.D.

Faculty of Information:**Graduate**

Master of Information Studies	M.I.St
Master of Museum Studies	M.M.St.
Doctor of Philosophy	Ph.D.
Graduate Diploma of Advanced Study in Information Studies	G.Dip.I.St

Faculty of Law:**Undergraduate**

Juris Doctor	J.D.
Juris Doctor and Certificate in Environmental Studies	J.D. /certificate in Env. Studies

Graduate

Master of Laws	LL.M.
Masters in Studies in Law	M.S.L.
Doctor of Juridical Science	S.J.D.

Joseph L. Rotman School of Management:**Graduate**

Omnium Global Executive Master of Business Administration	E.M.B.A.
Master of Business Administration	M.B.A.
Master of Finance	M.F.
Master of Financial Economics (with Arts & Science)	M.F.E.
Doctor of Philosophy	Ph.D.

Faculty of Medicine:**Undergraduate**

Doctor of Medicine	M.D.
Bachelor of Science, Medical Radiation Sciences	B.Sc.Med.Rad.Sc.

DEGREES, DIPLOMAS AND CERTIFICATES OFFERED BY DIVISION

(continued)

2008-09

Faculty of Medicine (continued):**Graduate**

Master of Science	M.Sc.
Master of Science in Biomedical Communications	M.Sc.BMC
Master of Health Informatics	M.H.I.
Master of Health Science	M.H.Sc.
Master of Management of Innovation	M.M.I.
Master of Science in Community Health	M.Sc.C.H.
Master of Science in Occupational Therapy	M.Sc.O.T.
Master of Science in Physical Therapy	M.Sc.P.T.
Master of Science in Physical Therapy and Master of Science in Rehabilitation Science	M.Sc.P.T./M.Sc.
Doctor of Philosophy	Ph.D.
Doctor of Medicine and Doctor of Philosophy	M.D./Ph.D.
Diploma in Community Health	Dip.C.H.

Post Doctoral

Diploma in Child Psychiatry	D.Child Psych.
Diploma in Clinical Chemistry	D.Cl.Chem.
Diploma in Industrial Health	D.I.H.
Post-Doctoral training in Medical Microbiology	

Faculty of Music:**Undergraduate**

Bachelor of Music	B.Mus.
Bachelor of Music in Performance	Mus Bac.Perf.
Advanced Certificate in Performance	Adv.Cert.Perf.
Artist Diploma	Art.Dip.Mus.
Diploma in Operatic Performance	Dip.Op.Perf.

Graduate

Master of Music	M.Mus.
Master of Arts	M.A.
Doctor of Musical Arts	D.M.A.
Doctor of Philosophy	Ph.D.

Lawrence S. Bloomberg Faculty of Nursing:**Undergraduate**

Bachelor of Science in Nursing	B.Sc.N.
Certificate as a Nurse Practitioner (Primary Health Care)	Cert.N.P.(PHC)

Graduate

Master of Nursing	M.N.
Master of Nursing Health Administration	M.N./M.H.Sc.
Doctor of Philosophy	Ph.D.
Post Masters Nurse Practitioner Diploma	Dip.N.P.

DEGREES, DIPLOMAS AND CERTIFICATES OFFERED BY DIVISION

(continued)

2008-09

Ontario Institute for Studies in Education (OISE):**Undergraduate**

Bachelor of Education (consecutive)	B.Ed.
Diploma in Technological Education	Dip.T.Ed.

Graduate

Master of Education	M.Ed.
Master of Teaching	M.T.
Master of Arts	M.A.
Doctor of Education	Ed.D.
Doctor of Philosophy	Ph.D.

Leslie L. Dan Faculty of Pharmacy:**Undergraduate**

Bachelor of Science in Pharmacy	B.Sc.Pharm.
Doctor of Pharmacy	Pharm.D.

Graduate

Master of Science	M.Sc.
Doctor of Philosophy	Ph.D.

Faculty of Physical Education and Health:**Undergraduate**

Bachelor of Physical and Health Education	B.P.H.E.
---	----------

Graduate

Master of Science	M.Sc.
Doctor of Philosophy	Ph.D.

School of Public Policy and Governance:

Master of Public Policy	M.P.P.
-------------------------	--------

Factor-Inwentash Faculty of Social Work:**Graduate**

Master of Social Work	M.S.W.
Master of Health Science in Health Administration and Master of Social Work	M.H.Sc./M.S.W.
Doctor of Philosophy	Ph.D.
Advanced Diploma in Social Service Administration	

University of Toronto at Mississauga:**Undergraduate**

Honours Bachelor of Arts	H.B.A.
Honours Bachelor of Science	H.B.Sc.
Bachelor of Business Administration	B.B.A.
Bachelor of Commerce	B.Com.

DEGREES, DIPLOMAS AND CERTIFICATES OFFERED BY DIVISION

(continued)

2008-09

University of Toronto at Mississauga (continued):**Graduate**

Master of Arts (tri-campus)	M.A.
Master of Science (tri-campus)	M.Sc.
Doctor of Philosophy (tri-campus)	Ph.D.
Master of Biotechnology	M.Biotech
Master of Management & Professional Accounting	M.M.P.A.
Diploma in Investigative & Forensic Accounting	D.I.F.A.

University of Toronto at Scarborough:**Undergraduate**

Honours Bachelor of Arts	H.B.A.
Honours Bachelor of Science	H.B.Sc.
Bachelor of Business Administration	B.B.A.
Certificate in Business	Cert.Bus.

Graduate

Master of Arts (tri-campus)	M.A.
Master of Science (tri-campus)	M.Sc.
Masters in Environmental Sciences	M.Env.Sc.
Doctor of Philosophy (tri-campus)	Ph.D.

Woodsworth College:**Undergraduate**

Certificate in Human Resource Management	C.H.R.M.
Certificate in Teaching English to Speakers of Other Languages	C.T.E.S.O.L.

COMBINED MULTI-DIVISIONAL PROGRAMS:

Concurrent teacher education program:	
Bachelor of Arts and Bachelor of Education	H.B.A./B.Ed.
Bachelor of Science and Bachelor of Education	H.B.Sc./B.Ed.
Bachelor of Music and Bachelor of Education	B.Mus./B.Ed.
Bachelor of Physical Education & Health and Bachelor of Education	B.P.H.E./B.Ed.
Master of Business Administration and Jeffrey Skoll	
Bachelor of Applied Science	B.A.Sc./M.B.A.
Juris Doctor and Master of Arts (Criminology, Economics, Russian and East European Studies)	J.D./M.A.
Juris Doctor and Master of Business Administration	J.D./M.B.A.
Juris Doctor and Master of Information Studies	J.D./M.I.St.
Juris Doctor and Master of Social Work	J.D./M.S.W.
Juris Doctor and Doctor of Philosophy (Economics, Philosophy, Political Science) combined programs	J.D./Ph.D.
Master of Business Administration and Master of Arts in Russian and East European Studies	M.B.A./M.A. (REES)

Part B

Finances

University of Toronto Financial Statements	
Statement of Operations	16
Changes in Surplus/Deficit	18
Operating Fund: Expense Summary	19
Operating Fund: Academic Expense Summary	20
Restricted Funds	21
University of Toronto Budget Reports	
Expense Budget Summary	22
Academic Costs	23

UNIVERSITY OF TORONTO FINANCIAL STATEMENTS 2007-08

STATEMENT OF OPERATIONS

for the year ended April 30, 2008

(with comparative figures for the year ended April 30, 2007)

(millions of dollars)

	OPERATING FUND	ANCILLARY OPERATIONS	CAPITAL FUND	RESTRICTED FUNDS	TOTAL 2008	TOTAL 2007
Revenues						
Government Grants - general operations	639.0				639.0	657.1
Student Fees	576.7	6.2	0.7		583.6	538.9
Government & other grants - restricted purposes		0.3	41.7	297.9	339.9	304.3
Sales, services and sundry income	104.5	125.2	7.7		237.4	212.9
Investment income (loss)						
Endowments	42.0			4.3	46.3	80.7
Other	12.5	1.9	3.0	6.2	23.6	53.7
Donations		0.2	13.1	42.9	56.2	74.8
Contract research	4.5			18.4	22.9	19.6
Total Revenues	1,379.2	133.8	66.2	369.7	1,948.9	1,942.0

UNIVERSITY OF TORONTO FINANCIAL STATEMENTS 2007-08

STATEMENT OF OPERATIONS (continued)

for the year ended April 30, 2008

(with comparative figures for the year ended April 30, 2007)

(millions of dollars)

	OPERATING FUND	ANCILLARY OPERATIONS	CAPITAL FUND	RESTRICTED FUNDS	TOTAL 2008	TOTAL 2007
Expenses						
Salaries and benefits	915.3	6.5		205.6	1,127.4	1,061.9
Materials and supplies	61.6	2.1		130.0	193.7	211.7
Scholarships, fellowships and bursaries	125.0				125.0	115.9
Amortization of capital assets	8.7	10.8	84.3	0.3	104.1	99.1
Cost of sales and services		76.5			76.5	77.7
Utilities	44.4	8.6			53.0	52.5
Repairs and maintenance	38.9	13.8	5.2	7.3	65.2	61.4
Travel and conferences	19.6			20.8	40.4	35.7
Interest on long-term debt	13.7	18.3		1.0	33.0	31.0
External contracted services	21.9			9.4	31.3	30.5
Telecommunications	10.4			1.3	11.7	10.6
Other	16.4		1.2	19.4	37.0	19.5
Total Expenses	1,275.9	136.6	90.7	395.1	1,898.3	1,807.5

UNIVERSITY OF TORONTO FINANCIAL STATEMENTS 2007-08
CHANGES IN SURPLUS/DEFICIT

for the year ended April 30, 2008
 (with comparative figures for the year ended April 30, 2007)

(millions of dollars)

	OPERATING FUND	ANCILLARY OPERATIONS	CAPITAL FUND	RESTRICTED FUNDS	TOTAL 2008	TOTAL 2007
Net Income (loss)	103.3	(2.8)	(24.5)	(25.4)	50.6	134.5
Net transfers between funds	(19.7)	(0.7)	16.6	3.8		
Transfer of capital assets	(63.8)		63.8			
Unrealized loss on swap contracts		(4.8)	(0.7)		(5.5)	
Change in internally restricted	0.5	(1.4)	(14.3)	2.4	(12.8)	(131.9)
Change in investments in capital assets		(23.4)	(64.9)		(88.3)	1.7
Transfers of donations to endowments				3.4	3.4	(4.1)
Transfer from internally restricted endowments				15.8	15.8	(24.2)
Net change in surplus (deficit) for the year	20.3	(33.1)	(24.0)	(0.0)	(36.8)	(24.0)
Unrestricted Deficit, beginning of the year	(66.3)	(80.3)	(48.5)		(195.1)	(171.1)
Unrestricted Deficit, end of year	(46.0)	(113.4)	(72.5)	(0.0)	(231.9)	(171.1)

UNIVERSITY OF TORONTO FINANCIAL STATEMENTS 2007-08

OPERATING FUND: EXPENSE SUMMARY

Expense Summary for the year ended April 30, 2008

(with comparative totals for the year ended April 30, 2007)

(thousands of dollars)

	ACADEMIC SALARIES	OTHER SALARIES	STAFF BENEFITS	TOTAL SALARIES AND BENEFITS	SUPPLIES AND OTHER EXPENSES	SCHOLARSHIPS FELLOWSHIPS BURSARIES	TOTAL	ELIMINATIONS AND RECLASS- IFICATIONS*	TOTAL DIVISIONAL EXPENSE
Academic	\$401,413	\$179,083	\$122,653	\$703,150	\$174,744		\$877,894	(\$41,907)	\$835,987
Academic Services	10,246	25,056	7,459	42,760	42,432		85,193	(7,003)	78,190
Campus & Student Services		19,090	3,526	22,616	8,067		30,683	1,076	31,759
Student Assistance		3,375	416	3,791	728	124,990	129,509	85	129,594
Operation & Maintenance of Physical Plant		40,517	8,599	49,116	144,722		193,838	(80,012)	113,826
Administration		62,320	13,487	75,807	26,280		102,087	(13,069)	89,018
Interest								13,717	13,717
Renovations and Alterations					17,129		17,129	23	17,152
Amortization								8,714	8,714
Other Expenditures		2,165	3,675	5,840	17,308		23,148	(1,354)	21,794
Sub-Total	411,659	331,607	159,814	903,080	431,411	124,990	1,459,481	(119,730)	1,339,750
Eliminations	(8,799)	(9,120)	30,158	12,238	(\$131,969)		(119,730)		
Total Expenses	\$402,859	\$322,487	\$189,972	\$915,318	\$299,442	\$124,990	\$1,339,750		1,339,750
2006-07 Comparatives	\$367,981	\$297,120	\$192,808	\$857,909	\$291,156	\$115,931	1,264,996		
Percentage Change	9.5%	8.5%	-1.5%	6.7%	2.8%	7.8%	5.9%		

*Eliminations and Reclassifications are external recovery of salaries and benefits as well as internal departmental changes between different functional groups.

UNIVERSITY OF TORONTO FINANCIAL STATEMENTS 2007-08

OPERATING FUND: ACADEMIC EXPENSE SUMMARY

For the year ending April 30, 2008

(with comparative totals for the year ended April 30, 2007)

(thousands of dollars)

	NET EXPENSES 2007-08	NET EXPENSES 2006-07
Arts & Science, Colleges & Schools:		
Faculty of Arts & Science	\$220,500	\$213,987
Federated Colleges Block Grant	11,817	11,391
Graduate Centres & Institutes	7,520	6,492
Mississauga, University of Toronto	61,598	57,158
Scarborough, University of Toronto	58,442	50,160
School of Continuing Studies	11,912	10,860
School of Graduate Studies	4,616	4,445
Transitional Year Program	1,650	1,513
Health Science Faculties/Schools:		
Faculty of Dentistry	\$35,732	\$24,898
Faculty of Medicine	115,788	121,150
Faculty of Nursing	8,982	7,270
Faculty of Pharmacy	10,979	15,515
Faculty of Physical Education and Health	21,446	19,006
Other Professional Faculties:		
Faculty of Applied Science & Engineering	\$66,015	\$65,361
Faculty of Architecture, Landscape, and Design	6,568	6,045
Faculty of Forestry	2,761	2,934
Faculty of Information Studies	8,063	8,050
Faculty of Law	17,452	17,385
Management, Rotman School of	56,403	48,736
Faculty of Music	11,385	10,247
OISE/UT (includes University of Toronto Schools)	56,654	53,846
Faculty of Social Work	5,519	4,926
Other Academic	\$34,185	\$31,706
Total Academic Expense	\$835,987	\$793,082

UNIVERSITY OF TORONTO FINANCIAL STATEMENTS 2007-08

RESTRICTED FUNDS

Endowments and Expendable Funds at Fair Value

for the year ending April 30, 2008 (with comparative figures for the year ended April 30, 2007)

(thousands of dollars)

	ENDOWMENT FUNDS		EXPENDABLE FUNDS	
	2008	2007	2008	2007
l'Anson Fund	\$3,061	\$3,232	\$449	\$324
Connaught Funds	98,468	103,952	4,757	8,055
Departmental Funds	157,425	170,776	134,573	138,884
Faculty Endowment Funds	554,346	560,497	15,545	13,549
Miscellaneous Funds	34,361	35,151	4,662	4,414
Ontario Student Opportunity Trust Funds Phase 1	344,236	378,479	23,590	22,163
Ontario Student Opportunity Trust Funds Phase 2	41,580	43,884	2,328	2,085
Ontario Trust for Student Support	43,454	35,606	1,827	948
Research Funds	139,018	146,671	197,144	193,521
Student Aid Funds	338,804	344,421	32,915	31,347
Total University of Toronto	\$1,754,753	\$1,822,669	\$417,790	\$415,290
Affiliated Universities	310,037	326,242	na	na
Total	\$2,064,790	\$2,148,911	na	na

UNIVERSITY OF TORONTO BUDGET REPORTS
EXPENSE BUDGET SUMMARY

*Time Series Comparison of Major Budget Categories, based on net expense budgets
 2006-07 to 2008-09*
 (Millions of dollars)

	2008-09	PERCENT INCREASE OVER PRIOR YEAR	2007-08	PERCENT INCREASE OVER PRIOR YEAR	2006-07
Academic	802.0	6%	758.8	13%	674.4
Academic Services	70.9	5%	67.8	7%	63.5
Campus & Student Services	1.7	87%	0.9	-19%	1.1
Student Assistance	90.6	40%	64.8	-23%	83.8
Facilities & Services	67.9	9%	62.3	9%	57.1
Utilities	50.2	0%	50.1	-7%	54.2
Alterations, Renovations, Lease Costs	0.0	-100%	1.4	-2%	1.5
Administration	97.6	8%	90.2	27%	70.8
General University Expense	57.4	-6%	61.0	-29%	85.9
Municipal Taxes	4.9	2%	4.8	2%	4.7
Total Expense Budget Summary	1,243.1	7%	1,162.3	6%	1,096.9
Administrative costs as % of Academic Costs	12%		12%		11%
Administrative Costs as % of Academic Costs & Academic Services Costs	11%		11%		10%
General University Costs as % of Academic Costs	7%		8%		13%

UNIVERSITY OF TORONTO BUDGET REPORTS

ACADEMIC COSTS

Time Series Comparison of Major Academic Costs, based on Net Expense Budgets

2006-07 to 2008-09

(Millions of dollars)

	2008-09	PERCENT OF BUDGET	PERCENT OF INCREASE OVER PRIOR YEAR	2007-08	PERCENT OF BUDGET	PERCENT OF INCREASE OVER PRIOR YEAR	2006-07	PERCENT OF BUDGET
Gross Expense Budget	1,104.3			1,036.0			951.4	
Recoveries	(158.9)			(153.3)			(120.6)	
Divisional Income	(143.4)			(123.9)			(156.4)	
Net Expense Budget	802.0		6%	758.8		13%	674.4	
Arts & Science, Colleges & Schools	350.2	44%	4%	336.4	44%	14%	295.8	44%
Health Sciences	131.2	16%	-1%	132.8	18%	18%	112.4	17%
Other Professional Faculties	201.7	25%	7%	188.3	25%	50%	125.2	19%
Other Academic Costs	118.8	15%	17%	101.3	13%	-28%	141.0	21%
Net Expense Budget	802.0	100%		758.8	100%		674.4	100%
Instructional Salaries	508.3	46%	3%	493.0	48%	-2%	501.7	53%
Other Salaries & Wages	163.1	15%	8%	151.4	15%	6%	142.6	15%
Benefits	138.5	13%	10%	125.9	12%	18%	107.0	11%
Supplies & Services	247.3	22%	11%	222.6	21%	33%	167.3	18%
Student Awards	47.0	4%	9%	43.1	4%	32%	32.8	3%
Gross Expense Budget	1,104.3	100%		1,036.0	100%		951.4	100%

Part C Research

Research Population	26
Revenue from Externally Sponsored Research	27
Academic Linkages between the University of Toronto and International Institutions	28
Technology Transfer Activities:	
a) Invention Disclosures	29
b) Spin-off Companies	29
c) Industrial Contracts and Grants	30
d) Government Funding Leveraged by Industrial Collaboration	30

RESEARCH POPULATION*September 2008*

	HUMANITIES	SOCIAL SCIENCES	PHYSICAL SCIENCES	LIFE SCIENCES	TOTAL
Full-Time Faculty	464	709	519	708	2,400
Part-Time Faculty	35	41	28	166	270
Status-Only Faculty	60	136	128	2,924	3,248
Full-Time Research Associates	4	23	116	121	264
Part-Time Research Associates	1	10	15	7	33
Post-Doctoral Fellows	18	33	366	1,329	1,746
Graduate Students	1,612	5,684	2,609	4,082	13,987

Notes:

1. Numbers shown here may differ from the full time faculty counts in other tables because of selection criteria for inclusion in the research population.
2. Faculty includes professorial ranks only.
3. Faculty members may have multiple appointments; only the main appointment was counted in the research population.
4. The figure for post-doctoral fellows includes those at the affiliated hospitals.

REVENUE FROM EXTERNALLY SPONSORED RESEARCH

(thousands of dollars)

	2005-06	2006-07	2007-08
University of Toronto			
Grants & Contracts	\$349,313	\$412,178	\$362,395
Donations	990	1,323	809
Subtotal	350,303	413,501	363,204
Overhead	13,031	14,529	12,304
Total, University of Toronto	\$363,334	\$428,030	\$375,508
Partner Hospitals	\$424,656	\$467,539	\$469,010 *
Grand Total	\$787,990	\$895,569	\$844,518 **

* Overhead included

** Estimate only for 2007-08, using previous year's revenue figure for the partner hospitals

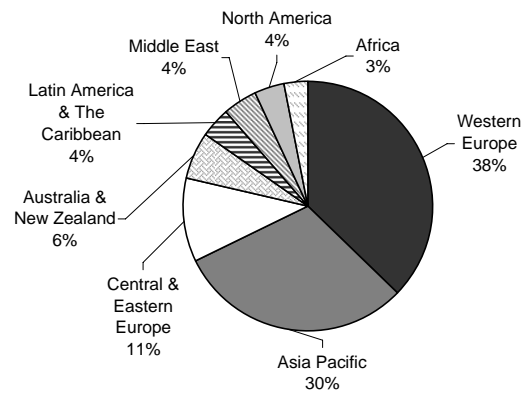
ACADEMIC LINKAGES BETWEEN THE UNIVERSITY OF TORONTO AND INTERNATIONAL INSTITUTIONS
November 2008

REGION	NUMBER OF MOU'S*
Western Europe	59
Asia Pacific	48
Central & Eastern Europe	17
Australia & New Zealand	10
Latin America & The Caribbean	6
Middle East	7
North America	6
Africa	5
Total	158

*Memoranda of Understanding (MOU's) are formal arrangements between institutions, which outline how they plan to cooperate over a specified period of time (normally, five years).

The areas included in MOU's are:

- joint research activities,
- participation in each institution's seminars and academic meetings,
- exchange of academic materials,
- short-term academic programs, and
- exchange of students.



TECHNOLOGY TRANSFER ACTIVITIES**DISCLOSURE ACTIVITY**

	2005-06	2006-07	2007-08
Number of UofT Inventions Disclosed	129	139	159

Excludes affiliated hospital disclosures.
Excludes Third Party disclosures to Innovations Foundation
Includes copyright and invention disclosures

COMMERCIALIZATION ACTIVITY

	2005-06	2006-07	2007-08
Number of Inventions for which an Option/License/Assignment has been signed	---	37	62
Gross Invention Revenue*	1,951,475	\$2,638,425	\$2,116,002
New Start-up Companies	2	8	7
Number of Active companies	105	107	114

*Includes revenue paid to Inventors and other institutions
All commercialization activity figures exclude affiliated hospitals.

TECHNOLOGY TRANSFER ACTIVITIES (continued)

INDUSTRIAL CONTRACTS AND GRANTS*

(April 2006 - March 2007)

Contracts		\$44,978,931
Grants		\$20,379,365
Total industrial research funding		\$65,358,296

GOVERNMENT FUNDING LEVERAGED BY INDUSTRIAL COLLABORATION*

(April 2006 - March 2007)

Networks of Centres of Excellence	UofT participated in 16 of 17	\$8,764,159
Ontario Centres of Excellence	UofT participated in 4 of 4	\$6,391,561
Research Excellence (MRI) & Ont. Research & Development Challenge Fund		\$19,241,451
Federal Granting Councils:		
NSERC	University/Industry Programs**	\$6,121,559
CIHR	University/Industry Programs**	\$3,109,693
Total government funding leveraged by industrial collaboration		\$43,628,424

* Includes the affiliated hospitals.

** Excludes the Networks of Centres of Excellence.

MRI: Ministry of Research and Innovation

Part D Students

Enrolment by Campus and Faculty/College	32
Enrolment by Program Mix and Degree Type	34
Enrolment by Age and Gender Balance	35
International Student Enrolment by Geographic Origin	36
International Student Enrolment by Geographic Origin: Five-Year Trend	38
Ten-Year Enrolment Trends, All Students	41
Gender Balance of Graduate and Undergraduate Enrolments by Field of Study	42
Undergraduate Intake by Faculty	43
Graduate Intake by Faculty	44
Total Intake	45
Degrees Awarded by Field of Study and Gender	46
Tuition Fee Schedule for Domestic and International Students	47
Tuition Fee Schedule for Self-Funded Programs	52

ENROLMENT BY CAMPUS AND FACULTY/COLLEGE

November 1, 2007

FACULTY/COLLEGE BY CAMPUS	UNDERGRADUATE STUDENTS			GRADUATE STUDENTS			ALL STUDENTS		FTE STUDENTS		
	Full-Time	Part-Time	Percent Female	Full-Time	Part-Time	Percent Female	Total	Percent Female	Under-graduate	Graduate	Total
St. George Campus											
Applied Science & Engineering	4,111	564	21%	1,239	182	25%	6,096	22%	4,325	1,294	5,619
Architecture Landscape & Design	0	0	---	312	25	45%	337	45%	0	320	320
Arts & Science	22,320	3,505	58%	3,113	108	50%	29,046	57%	20,715	3,147	23,862
Innis	1,620	135	57%	0	0	---	1,755	57%	1,494	0	1,494
New	3,993	345	54%	0	0	---	4,338	54%	3,647	0	3,647
St. Michael's College	3,959	379	56%	0	0	---	4,338	56%	3,589	0	3,589
Trinity	1,562	90	60%	0	0	---	1,652	60%	1,474	0	1,474
University	3,954	341	61%	0	0	---	4,295	61%	3,629	0	3,629
Victoria	3,015	274	67%	0	0	---	3,289	67%	2,793	0	2,793
Woodsworth	4,217	1,941	56%	0	0	---	6,158	56%	4,090	0	4,090
Dentistry	336	0	52%	114	1	55%	451	53%	336	114	450
Forestry	0	0	---	80	0	51%	80	51%	0	80	80
Graduate Centres & Institutes	0	0	---	173	54	62%	227	62%	0	189	189
Information	0	0	---	365	120	78%	485	78%	0	401	401
Law	571	41	51%	94	10	50%	716	51%	610	97	707
Management	0	0	---	817	199	29%	1,016	29%	0	880	880
Medicine	3,652	2	50%	2,556	129	64%	6,339	56%	3,654	2,602	6,256
Music	441	20	55%	202	13	57%	676	55%	454	206	660
Nursing	312	9	89%	202	219	96%	742	93%	313	268	581

ENROLMENT BY CAMPUS AND FACULTY/COLLEGE (continued)

November 1, 2007

FACULTY/COLLEGE BY CAMPUS	UNDERGRADUATE STUDENTS			GRADUATE STUDENTS			ALL STUDENTS		FTE STUDENTS		
	Full-Time	Part-Time	Percent Female	Full-Time	Part-Time	Percent Female	Total	Percent Female	Under-graduate	Graduate	Total
St. George (continued)											
OISE/UT	1,232	21	68%	1,291	753	77%	3,297	74%	1,250	1,517	2,767
Pharmacy	951	28	67%	105	21	57%	1,105	66%	1,023	111	1,134
Physical Education & Health	554	23	61%	50	5	60%	632	61%	526	52	578
Social Work	0	0	---	347	45	89%	392	89%	0	361	361
Transitional Year Program	56	223	66%	0	0	---	279	66%	95	0	95
Woodsworth Certificates, Diplomas	35	121	79%	0	0	---	156	79%	70	0	70
Total St. George	34,571	4,557	54%	11,060	1,884	57%	52,072	55%	33,371	11,638	45,009
U of T at Mississauga											
Arts & Science	9,338	831	58%	207	0	51%	10,376	58%	8,411	207	8,618
Prof. Grad. Prog. Centre	0	0	---	108	62	55%	170	55%	0	127	127
Graduate, all other faculties	0	0	---	17	0	59%	17	59%	0	17	17
Total U of T at Mississauga	9,338	831	58%	332	62	53%	10,563	58%	8,411	351	8,761
U of T at Scarborough											
Arts & Science	9,200	1,011	59%	129	22	56%	10,362	59%	8,377	136	8,512
Graduate, all other faculties	0	0	---	18	1	84%	19	84%	0	18	18
Total Scarborough	9,200	1,011	59%	147	23	59%	10,381	59%	8,377	154	8,531
Grand Total	53,109	6,399	55%	11,539	1,969	57%	73,016	56%	50,159	12,142	62,301

Note: Excludes 772 FTE students in the Toronto School of Theology.

ENROLMENT BY PROGRAM MIX AND DEGREE TYPE

November 1, 2007

	HEADCOUNT	FTE
Undergraduate First Entry		
Undergraduate Degree	50,373	42,170
Undergraduate Certificates	18	17
Undergraduate Special Students	1,806	716
Total Undergraduate First Entry	52,197	42,903
Undergraduate Professional		
Undergraduate Degree	4,567	4,608
Dental, Medical and Pharmacy Residents	2,446	2,446
Undergraduate Certificates	260	166
Undergraduate Special Students	38	36
Total Undergraduate Professional	7,311	7,256
Graduate Doctoral Stream		
Masters	3,035	2,834
Doctoral	5,230	5,185
Graduate Special Students	44	36
Total Graduate Doctoral Stream	8,309	8,054
Graduate Professional and Diploma		
Masters	5,022	4,011
Graduate Diplomas	103	38
Graduate Special Students	74	40
Total Graduate Professional and Diploma	5,199	4,088
Total	73,016	62,301

Note: Excludes 772 FTE students in the Toronto School of Theology.

ENROLMENT BY AGE AND GENDER BALANCE

November 1, 1997 vs. November 1, 2007

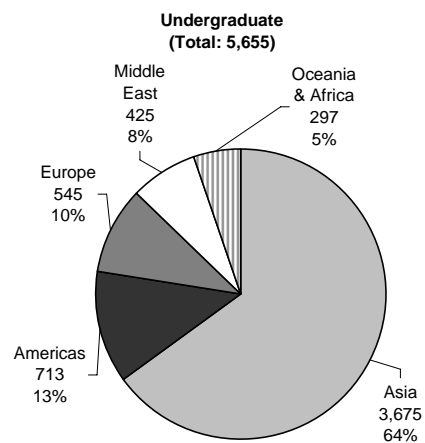
	1997			2007		
	Male	Female	Total	Male	Female	Total
Full-Time Undergraduate						
Number	13,883	17,117	31,000	23,552	29,557	53,109
Percent	44.8%	55.2%	100.0%	44.3%	55.7%	100.0%
Median Age	21.6	21.2	21.4	20.9	20.9	20.9
Full-Time Graduate						
Number	3,582	3,764	7,346	5,155	6,384	11,539
Percent	48.8%	51.2%	100.0%	44.7%	55.3%	100.0%
Median Age	28.7	28.9	28.8	27.8	27.3	27.6
Part-Time Undergraduate						
Number	4,432	6,931	11,363	2,951	3,448	6,399
Percent	39.0%	61.0%	100.0%	46.1%	53.9%	100.0%
Median Age	25.3	26.9	26.2	23.5	24.3	23.8
Part-Time Graduate						
Number	948	1,581	2,529	689	1,280	1,969
Percent	37.5%	62.5%	100.0%	35.0%	65.0%	100.0%
Median Age	34.1	36.4	35.4	34.0	35.3	34.9

Notes: Excludes Toronto School of Theology;

1997 numbers exclude 456 part-time enrolments in the Woodsworth Pre-University program;

2007 numbers exclude students enrolled in Additional Qualification courses (OISE) no longer reported to MTCU.

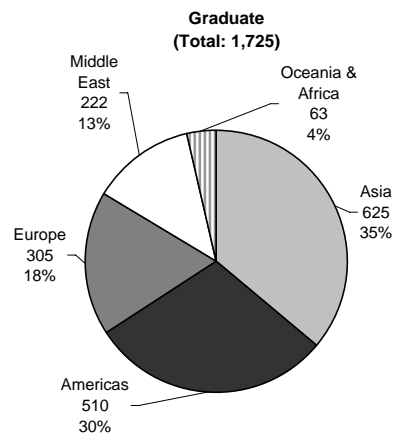
INTERNATIONAL STUDENT ENROLMENT BY GEOGRAPHIC ORIGIN
November 1, 2007



Top 3 Countries in each Region			
	Country	Count	% of Undergraduate
Americas	U.S.A	371	6.6%
	Trinidad & Tobago	63	1.1%
	Brazil	41	0.7%
Asia	China & Hong Kong	1,736	30.7%
	South Korea	711	12.6%
	India	293	5.2%
Europe	United Kingdom	133	2.4%
	France	56	1.0%
	Irish Republic	52	0.9%
Middle East	Saudi Arabia	106	1.9%
	Israel	53	0.9%
	Turkey	33	0.6%
Oceania & Africa	Nigeria	64	1.1%
	Australia	61	1.1%
	Kenya	34	0.6%

Note: In Fall 2007, the largest percentage of undergraduate international students were from China including Hong Hong (30.7%) followed by South Korea (12.6%).

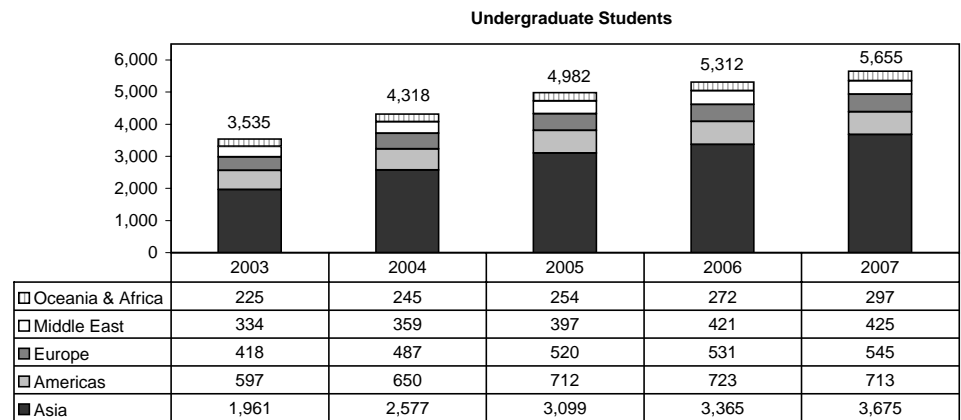
INTERNATIONAL STUDENT ENROLMENT BY GEOGRAPHIC ORIGIN(continued)
November 1, 2007



Top 3 Countries in each Region			
	Country	Count	% of Graduate
Americas	U.S.A.	383	22.2%
	Mexico	42	2.4%
	Brazil	27	1.6%
Asia	China & Hong Kong	291	16.9%
	India	123	7.1%
	Japan	43	2.5%
Europe	Germany	65	3.8%
	United Kingdom	37	2.1%
	Greece	31	1.8%
Middle East	Iran	98	5.7%
	Israel	33	1.9%
	Turkey	27	1.6%
Oceania & Africa	Australia	20	1.2%
	New Zealand	12	0.7%
	Ghana	7	0.4%

Note: In Fall 2007, the largest percentage of graduate international students were from the USA (22.2%) followed by China including Hong Kong (16.9%).

INTERNATIONAL STUDENT ENROLMENT: FIVE-YEAR TREND
November 1, 2003 to November 1, 2007

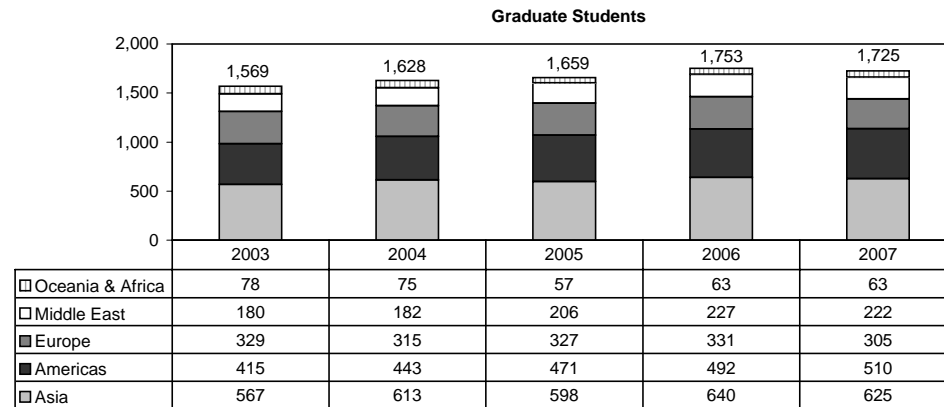


Note:

In Fall 2003, the largest percentage of undergraduate international students were from China including Hong Kong (22.3%) followed by the USA (11.1%).

In Fall 2007, the largest percentage of undergraduate international students were from China including Hong Kong (30.7%) followed by South Korea (12.6%).

INTERNATIONAL STUDENT ENROLMENT: FIVE-YEAR TREND(continued)
November 1, 2003 to November 1, 2007

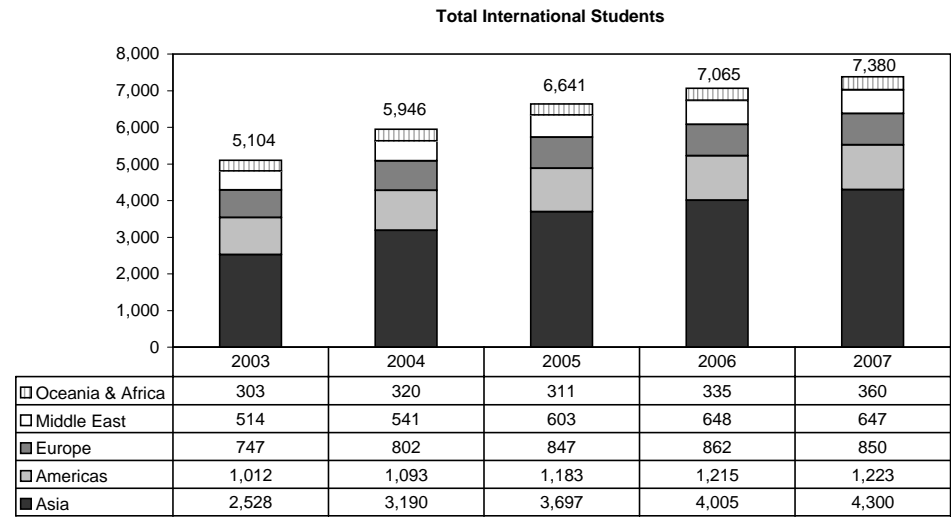


Note:

In Fall 2003, the largest percentage of graduate international students were from the USA (16.7%) followed by China including Hong Kong (19.6%) .

In Fall 2007, the largest percentage of graduate international students were from (22.2%) followed by China including Hong Kong (16.9%).

INTERNATIONAL STUDENT ENROLMENT: FIVE-YEAR TREND(continued)
November 1, 2003 to November 1, 2007



TEN-YEAR ENROLMENT TRENDS, ALL STUDENTS
November 1, 1998-November 1, 2007

	TOTAL STUDENTS*				INTERNATIONAL STUDENTS			
	Undergraduate		Graduate		Undergraduate		Graduate	
	Total	% Female	Total	% Female	Total	% Female	Total	% Female
1998	43,139	56.9%	9,658	54.9%	1,266	43.3%	822	39.1%
1999	44,234	56.8%	9,898	54.8%	1,568	44.4%	899	40.6%
2000	44,964	56.8%	10,163	55.4%	1,914	45.7%	980	40.9%
2001	47,265	57.6%	10,775	56.0%	2,387	47.7%	1,150	42.3%
2002	50,403	57.3%	11,597	56.1%	3,023	49.7%	1,380	43.9%
2003	55,369	57.9%	11,928	55.9%	3,535	49.9%	1,569	41.9%
2004	55,624	56.9%	12,068	55.4%	4,318	49.3%	1,628	41.6%
2005	58,182	56.5%	11,961	55.8%	4,982	49.1%	1,659	42.4%
2006	58,915	56.1%	12,287	56.5%	5,312	48.8%	1,753	43.4%
2007	59,508	55.5%	13,508	56.7%	5,655	49.3%	1,725	42.0%

* Total students includes domestic students and international students.

Notes:

1. Excludes students in the Toronto School of Theology.
2. Beginning 2004, students enrolled in Additional Qualification courses at OISE were no longer reported to MTCU and are excluded.

GENDER BALANCE OF UNDERGRADUATE AND GRADUATE ENROLMENT BY FIELD OF STUDY
November 1, 2007

STATISTICS CANADA FIELD OF STUDY	UNDERGRADUATE		GRADUATE	
	Total	% Female	Total	% Female
Biological Sciences	5,016	60%	522	55%
Education & Physical Education	2,139	68%	2,099	77%
Engineering & Applied Sciences	4,782	22%	1,807	29%
Fine & Applied Arts	1,445	71%	365	64%
General Arts and Science	9,401	60%	0	n/a
Health Professions	6,059	56%	2,983	68%
Humanities	9,215	62%	1,678	64%
Math & Physical Sciences	2,670	33%	1,016	28%
Social Sciences	17,030	58%	3,038	53%
Not Specified	1,751	60%	0	n/a
Total	59,508	55%	13,508	57%

Notes:

1. 'Education & Physical Education' includes the Faculty of Physical Education and Health and the Ontario Institute for Studies in Education (OISE).
2. Excludes students in the Toronto School of Theology.
3. Most of the "not specified" group includes first year and special students in Arts and Science.

UNDERGRADUATE INTAKE BY FACULTY

November 1, 2007

	TOTAL HEADCOUNT					PERCENTAGE OF TOTAL HEADCOUNT				
	GTA Area	Other Ontario	Other Canada	Inter-national	Total	GTA	Other Ontario	Other Canada	Inter-national	Total
Applied Science	825	106	128	213	1,272	64.9%	8.3%	10.1%	16.7%	100%
Arts & Science										
St George	4,102	615	379	1,011	6,107	67.2%	10.1%	6.2%	16.6%	100%
Mississauga	2,087	250	75	269	2,681	77.8%	9.3%	2.8%	10.0%	100%
Scarborough	2,166	107	55	321	2,649	81.8%	4.0%	2.1%	12.1%	100%
Total Arts & Science	8,355	972	509	1,601	11,437	73.1%	8.5%	4.5%	14.0%	100%
Dentistry	52	12	8	2	74	70.3%	16.2%	10.8%	2.7%	100%
Law	66	29	35	36	166	39.8%	17.5%	21.1%	21.7%	100%
Medicine										
MD	87	54	23	0	164	53.0%	32.9%	14.0%	0.0%	100%
Radiation Sciences	40	22	9	0	71	56.3%	31.0%	12.7%	0.0%	100%
Total, Medicine	127	76	32	0	235	54.0%	32.3%	13.6%	0.0%	100%
Music	90	26	18	7	141	63.8%	18.4%	12.8%	5.0%	100%
Nursing	66	33	11	1	111	59.5%	29.7%	9.9%	0.9%	100%
OISE/UT	576	174	23	5	778	74.0%	22.4%	3.0%	0.6%	100%
Pharmacy	59	77	10	1	147	40.1%	52.4%	6.8%	0.7%	100%
Physical Education and Health	130	19	7	5	161	80.7%	11.8%	4.3%	3.1%	100%
Total Undergraduate	10,346	1,524	781	1,871	14,522	71.2%	10.5%	5.4%	12.9%	100%

Notes:

1. Excludes Transitional Year Program, Academic Bridging Program, and Woodsworth diploma and certificate programs.
2. Intake data is not available for Post-Graduate Medical Education.

GRADUATE INTAKE BY FACULTY

November 1, 2007

	TOTAL HEADCOUNT					PERCENTAGE OF TOTAL HEADCOUNT				
	GTA Area	Other Ontario	Other Canada	Inter-national	Total	GTA	Other Ontario	Other Canada	Inter-national	Total
Applied Science & Engineering	304	54	41	75	474	64.1%	11.4%	8.6%	15.8%	100%
Architecture, Landscape & Design	87	13	24	10	134	64.9%	9.7%	17.9%	7.5%	100%
Arts & Science	730	212	196	237	1,375	53.1%	15.4%	14.3%	17.2%	100%
Dentistry	10	1	1	5	17	58.8%	5.9%	5.9%	29.4%	100%
Forestry	8	7	2	7	24	33.3%	29.2%	8.3%	29.2%	100%
Information Studies	158	38	18	10	224	70.5%	17.0%	8.0%	4.5%	100%
Law	18	7	3	26	54	33.3%	13.0%	5.6%	48.1%	100%
Management	319	28	25	80	452	70.6%	6.2%	5.5%	17.7%	100%
Medicine	538	166	69	56	829	64.9%	20.0%	8.3%	6.8%	100%
Music	62	28	29	9	128	48.4%	21.9%	22.7%	7.0%	100%
Nursing	94	32	7	1	134	70.1%	23.9%	5.2%	0.7%	100%
OISE/UT	485	90	36	37	648	74.8%	13.9%	5.6%	5.7%	100%
Pharmacy	18	3	0	5	26	69.2%	11.5%	0.0%	19.2%	100%
Physical Education & Health	14	3	2	0	19	73.7%	15.8%	10.5%	0.0%	100%
SGS Centres & Institutes	84	24	17	10	135	62.2%	17.8%	12.6%	7.4%	100%
Social Work	146	38	12	2	198	73.7%	19.2%	6.1%	1.0%	100%
UTM Professional Graduate Program Centre	12	0	12	3	27	6.1%	0.0%	6.1%	1.5%	14%
Total Graduate	3,087	744	494	573	4,898	63.0%	15.2%	10.1%	11.7%	100%

Note: Includes Graduate diplomas in Medicine and Music.

TOTAL INTAKE
November 1, 2007

	TOTAL HEADCOUNT					PERCENTAGE OF TOTAL HEADCOUNT				
	GTA Area	Other Ontario	Other Canada	Inter- national	Total	GTA	Other Ontario	Other Canada	Inter- national	Total
Total Undergraduate	10,346	1,524	781	1,871	14,522	71.2%	10.5%	5.4%	12.9%	100%
Total Graduate	3,087	744	494	573	4,898	63.0%	15.2%	10.1%	11.7%	100%
Undergraduate & Graduate	13,433	2,268	1,275	2,444	19,420	69.2%	11.7%	6.6%	12.6%	100%

DEGREES AWARDED BY FIELD OF STUDY AND GENDER

Calendar Year 2007

STATISTICS CANADA FIELD OF STUDY	UNDERGRADUATE		MASTERS		DOCTORAL		TOTAL	
	Total	% Female	Total	% Female	Total	% Female	Total	% Female
Biological Sciences	1,123	66%	75	63%	45	56%	1,243	66%
Education & Physical Education	1,372	73%	398	84%	125	72%	1,895	76%
Engineering & Physical Sciences	976	26%	398	35%	102	22%	1,476	28%
Fine & Applied Arts	287	77%	87	74%	16	44%	390	75%
General Arts & Science	576	54%					576	54%
Health Professions	985	69%	611	76%	165	54%	1,761	70%
Humanities	1,969	65%	358	61%	66	64%	2,393	64%
Mathematics & Physical Sciences	573	36%	173	34%	89	40%	835	36%
Social Sciences	3,745	63%	1,012	52%	90	59%	4,847	61%
Total	11,606	61%	3,112	60%	698	52%	15,416	60%

Notes:

1. Education & Physical Education includes the Faculty of Physical Education & Health and the Ontario Institute for Studies in Education (OISE).
2. Excludes Toronto School of Theology, Certificate and Diploma students.

TUITION FEE SCHEDULE FOR DOMESTIC AND INTERNATIONAL STUDENTS
2008 Entering Cohort
2008-09

	DOMESTIC STUDENTS	INTERNATIONAL STUDENTS
APPLIED SCIENCE & ENGINEERING		
Bachelors (B.A.Sc.)	\$8,655	\$21,830
Master of Engineering (M.Eng.)	\$8,172	\$21,830
ARCHITECTURE, LANDSCAPE, AND DESIGN		
Master of Architecture (M. Arch.)	\$7,234	\$20,837
Master of Landscape Architecture (M.L.A.)	\$7,234	\$20,837
Master of Urban Design (M.U.D.)	\$7,234	\$20,837
ARTS & SCIENCE incl. SCARBOROUGH		
Bachelors (B.A./B.Sc.)	\$4,776	\$19,404
*Bachelors - Bioinformatics and Computational Biology	\$4,776	\$19,404
*Bachelors - Computer Science and Communication Culture & Information Technology	\$4,776	\$19,404
*Bachelors - Commerce/Bus Admin (B.Com/B.B.A)	\$4,776	\$19,404
*Bachelors - Management UTM	\$4,776	\$19,404
*Bachelors - UTSC - Joint Programs with Centennial	\$4,776	\$19,404
Master of Science in Planning (M.Sc.Pl.)	\$7,234	\$18,522
Master of Urban Design Studies (M.U.D.S.)	\$7,234	\$15,822
Master of Biotechnology (M.Biotech.)	\$10,827	\$20,837
Master of Visual Studies (M.V.S.)	\$6,121	\$18,522
Masters in Environmental Science (M.Env.Sc.)	\$7,512	\$19,404
Master of Financial Economics (M.F.E.)	\$20,079	\$28,525
Master of Public Policy (M.P.P.)	\$10,800	\$23,625

*For Arts and Science students in programs with additional cost recovery fees beginning in Year 2 the fee shown for Entering Year is the Arts and Science fee charged to all students in Year 1.

TUITION FEE SCHEDULE FOR DOMESTIC AND INTERNATIONAL STUDENTS (continued)
2008 Entering Cohort
2008-09

	DOMESTIC STUDENTS	INTERNATIONAL STUDENTS
DENTISTRY		
Doctor of Dental Surgery (D.D.S.)	\$22,612	\$48,300
Master of Science with Speciality Training - MOH Funded		
Oral Maxillofacial Surgery & Anaesthesia; Oral Pathology & Oral Medicine	\$1,793	na
Oral Pathology; Oral Medicine	\$2,274	na
Master of Science with Speciality Training - Non-MOH Funded		
Dental Public Health	\$7,577	\$16,793
Oral & Maxillofacial Surgery	\$18,489	\$39,698
Other	\$17,115	\$36,831
PhD with Specialty Training		
MOH Funded	\$3,648	na
Dental Public Health	\$6,703	\$15,052
Other non-MOH funded	\$11,618	\$25,361
FORESTRY		
Master of Forest Conservation (M.F.C.)	\$6,901	\$20,837
INFORMATION		
Master of Information (M.I.)	\$6,901	\$20,837
Master of Museum Studies (M.M.St.)	\$7,577	\$18,522
Diploma of Advanced Study in Information Studies	\$6,901	\$20,837
LAW		
Juris Doctor (J.D.)	\$20,155	\$29,601
Master of Laws (L.L.M.)	\$6,121	\$20,837
Masters in Studies in Law (M.S.L.)	\$6,121	\$13,892
Doctor of Juridical Science (S.J.D.)	\$6,121	\$13,892

TUITION FEE SCHEDULE FOR DOMESTIC AND INTERNATIONAL STUDENTS (continued)
2008 Entering Cohort
2008-09

	DOMESTIC STUDENTS	INTERNATIONAL STUDENTS
MANAGEMENT		
Master of Business Administration, 2 Year Program (M.B.A.)	\$31,493	\$41,717
Master of Business Administration, 3 Year Program (M.B.A.)	\$21,415	\$28,507
Master of Finance (M.F.)	\$29,700	\$39,900
MEDICINE		
Doctor of Medicine (M.D.)	\$17,199	\$46,305
Health Science Diplomas	\$7,577	\$16,793
Radiation Sciences (B.Sc.Med.Rad.Sc.)	\$5,398	\$19,145
M.Sc. Occupational Therapy and Physical Therapy (M.Sc.O.T.) (M.Sc.P.T.)	\$7,577	\$18,522
Master of Health Science (M.H.Sc.)	\$7,577	\$18,522
Master of Science in Biomedical Communications (M.Sc.BMC.)	\$7,577	\$18,522
Master of Management of Innovation (M.M.I.)	\$20,550	\$28,665
Master of Science in Community Health (M.Sc.CH.)	\$7,577	\$18,522
Combined MD/PhD	\$11,660	\$30,098
MUSIC		
Undergraduate (Mus.Bac.)	\$4,776	\$19,404
Operatic Performance Diploma (Dip.Op.Perf.)	\$6,755	\$19,404
Advanced Certificate in Performance (Adv.Cert.Perf.)	\$6,755	\$19,404
Master of Music in Performance (Mus.M. (Performance))	\$6,755	\$18,522
Master of Music in Composition (Mus.M. (Composition))	\$6,602	\$16,339
Doctor of Musical Arts (Performance) & (Composition) D.M.A.	\$6,602	\$13,892

TUITION FEE SCHEDULE FOR DOMESTIC AND INTERNATIONAL STUDENTS (continued)
2008 Entering Cohort
2008-09

	DOMESTIC STUDENTS	INTERNATIONAL STUDENTS
NURSING		
Bachelor of Science in Nursing (B.Sc.N)	\$6,409	\$19,404
Master of Nursing (M.N.)	\$7,442	\$19,404
Post-Masters Nurse Practitioner Diploma Program (part-time)	\$5,873	\$8,925
OISE/UT		
Bachelor of Education (B.Ed.)	\$5,298	\$19,404
Technical & Vocational Certificates	\$5,298	\$19,404
Concurrent Teacher Education Program (CTEP)	\$4,985	\$19,404
Joint Master of Teaching in Human Devt and Curriculum	\$7,577	\$18,522
M.A. in Child Study	\$7,577	\$18,522
Master of Education (M.Ed.)	\$7,577	\$18,522
Doctor of Education (Ed.D.)	\$7,159	\$18,522
PHARMACY		
Bachelor of Science in Pharmacy (B.Sc.Pharm.)	\$11,337	\$23,153
Doctor of Pharmacy (Pharm.D.)	\$29,207	\$29,346
PHYSICAL EDUCATION AND HEALTH		
Bachelor of Physical Education & Health (B.P.E.H.)	\$4,776	\$19,404
S.G.S. (annual fee)		
Doctoral Stream	\$6,121	\$13,892
S.G.S. CENTERS AND INSTITUTES		
Master of Industrial Relations & Human Resources (M.I.R.H.R.)	\$7,577	\$20,837
Master of Industrial Relations & Human Resources (M.I.R.H.R.) 12 month Advanced Standing Option	\$11,366	\$31,256

TUITION FEE SCHEDULE FOR DOMESTIC AND INTERNATIONAL STUDENTS (continued)
2008 Entering Cohort
 2008-09

	DOMESTIC STUDENTS	INTERNATIONAL STUDENTS
SOCIAL WORK		
Master of Social Work (M.S.W.)	\$6,901	\$18,522
TRANSITIONAL YEAR PROGRAM		
Regular	\$4,059	na
Extended	\$2,030	na
UTM PROFESSIONAL GRADUATE PROGRAM CENTRE (PGPC)		
Diploma in Forensic Accounting (D.I.F.A.)	\$9,798	\$11,025
Master of Management & Professional Accounting (M.M.P.A.)	\$23,048	\$26,803
WOODSWORTH		
Woodsworth Certificates	\$4,776	\$19,404

TUITION FEE SCHEDULE FOR SELF-FUNDED PROGRAMS
2008-09

	2008 ENTERING COHORT
Masters of Engineering in Telecommunications	\$25,000
Masters of Engineering in Design & Manufacturing Course Fee	\$2,500
Summer Program in Medieval Latin	
Domestic	\$1,000
International	\$1,000
Masters of Mathematical Finance	\$36,000
International Dentist Advanced Placement Program	\$31,200
Executive Masters of Business Administration	\$85,000
Executive Masters of Business Administration (OMNIUM GEMBA)	\$80,000 (U.S.)
Sponsored Medical Trainees	\$31,630
OISE/UT- Laboratory School - Half Day Program	\$7,372
OISE/UT- Laboratory School - Full Day Program	\$11,494
OISE/UT- Laboratory School - Bloorview MacMillan	\$11,103

Part E Graduates

Graduates by Region	54
Number of Degree Affiliations by College or Faculty	55
Total Annual Gifts Received	56
Total Annual Gifts Received: Source of Donations	57

GRADUATES BY REGION

As of Fall 2008

	NUMBER OF LIVING	PERCENTAGE OF LIVING
Canada		
Ontario		
Metro Toronto	207,023	44.9%
Central Ontario	125,262	27.1%
Southwestern Ontario	23,400	5.1%
Eastern Ontario	21,959	4.8%
Northern Ontario	7,890	1.7%
Subtotal Ontario	385,534	83.5%
Rest of Canada		
British Columbia	12,085	2.6%
Alberta	6,859	1.5%
Quebec	5,632	1.2%
Nova Scotia	2,576	0.6%
Manitoba	2,089	0.5%
Saskatchewan	1,536	0.3%
New Brunswick	1,105	0.2%
Newfoundland	1,096	0.2%
Prince Edward Island	305	0.1%
Northwest Territories	171	0.1%
Yukon Territory	118	
Nunavut	37	
Unknown within Canada	766	0.2%
Canada Total	419,909	91.0%
United States Total	22,239	4.8%
International	19,438	4.2%
International Total	41,677	9.0%
Grand Total	461,586	100.0%

The number of individuals (both living and deceased) who have graduated from the University of Toronto is 532,314.

Note: Regional Breakdown is based on data as at September 26, 2008.

**NUMBER OF DEGREE AFFILIATIONS
BY COLLEGE OR FACULTY**

As of Fall 2008

	NUMBER OF DEGREE AFFILIATIONS
Arts & Science Programs	
Constituent Colleges:	
Innis College	8,004
New College	19,317
University College	47,765
Woodsworth College	19,555
Federated Colleges:	
St. Michael's College	31,601
Trinity College	18,766
Victoria College	40,737
University of Toronto at Mississauga	34,608
University of Toronto at Scarborough	32,903
Other Faculties	
Applied Science & Engineering	48,589
Architecture, Landscape & Design	3,632
Dentistry	11,006
Forestry	2,842
Graduate Studies/ Graduate Institutes & Centres	105,423
Information	6,216
Joseph L. Rotman School of Management	10,910
Law	8,349
Medicine, Doctor of	15,053
Other Medicine	16,013
Music	5,264
Nursing	10,689
OISE/UT:	
Undergraduate	49,404
Graduate	23,688
Institute of Child Study	2,040
Pharmacy	11,019
Physical & Occupational Therapy	6,925
Physical Education & Health	5,107
Social Work	7,932
Woodsworth Certificate & Diploma	6,951

Notes:

Honorary degrees are excluded.

Graduates with multiple degrees are counted in more than one constituency.

A single degree may be affiliated with more than one constituency.

Does not include Toronto School of Theology.

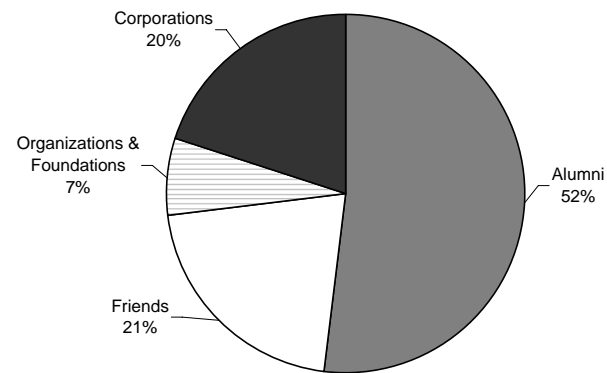
TOTAL ANNUAL GIFTS RECEIVED

2004-05 to 2007-08



PERCENTAGE OF PLEDGE DOLLARS BY DONOR SECTOR
2007-08

Total Value: \$183,046,025



Part F Student Awards

Undergraduate Student Support : Admission Scholarships, In-Course Scholarships and Bursaries by Faculty and College	60
OSAP and University of Toronto Advanced Planning for Students program (UTAPS) by Faculty and College	62
Graduate Student Support by Source	64
Graduate Student Support by School of Graduate Studies Division	65

UNDERGRADUATE STUDENT SUPPORT: ADMISSION SCHOLARSHIPS, IN-COURSE SCHOLARSHIPS AND BURSARIES
2007-08

FACULTY / COLLEGE	ADMISSION SCHOLARSHIPS		IN-COURSE SCHOLARSHIPS		BURSARIES	
	Number	Value (\$)	Number	Value (\$)	Number	Value (\$)
Applied Science and Engineering	534	\$1,154,996	195	\$422,636	1,962	\$6,634,353
Arts and Science, St. George						
Innis College	52	192,161	171	247,550	228	552,891
New College	87	190,196	240	287,495	702	1,667,247
University College	223	475,238	551	502,427	702	1,601,110
Woodsworth College	26	111,794	130	164,512	1,465	2,620,442
St. Michael's College	71	259,843	205	324,198	425	927,575
Trinity College	187	437,478	449	561,735	254	572,479
Victoria College	137	514,615	474	506,878	677	1,290,354
Dentistry	3	3,561	57	31,708	273	1,019,324
Law	16	38,976	113	95,957	469	2,160,990
Medicine	4	10,596	301	241,262	967	3,950,432
Radiation Sciences	0	0	0	0	135	138,600
Music	17	48,035	90	118,100	172	356,789

UNDERGRADUATE STUDENT SUPPORT: ADMISSION SCHOLARSHIPS, IN-COURSE SCHOLARSHIPS AND BURSARIES

(continued)

2007-08

FACULTY / COLLEGE	ADMISSION SCHOLARSHIPS		IN-COURSE SCHOLARSHIPS		BURSARIES	
	Number	Value (\$)	Number	Value (\$)	Number	Value (\$)
Nursing	4	9,280	32	41,437	170	390,776
OISE/UT Undergraduate	15	36,027	17	20,415	334	956,430
Pharmacy	18	12,322	97	62,967	985	1,819,435
Physical Education and Health	9	18,779	39	67,593	85	114,692
Transitional Year Program	0	0	11	2,881	149	269,482
U of T at Mississauga	273	443,600	133	154,563	992	2,566,628
U of T at Scarborough	274	396,665	332	362,275	1,255	3,609,378
Total	1,950	\$4,354,160	3,637	\$4,216,589	12,401	\$33,219,406

OSAP AND UNIVERSITY OF TORONTO ADVANCED PLANNING FOR STUDENTS PROGRAM (UTAPS) BY FACULTY AND COLLEGE
2007-08

FACULTY / COLLEGE	OSAP APPLICANTS AS A PERCENTAGE OF		OSAP		UTAPS	
	FULL-TIME ENROLMENT		Number	Value (\$)	Number	Value (\$)
Applied Science and Engineering	47%		1,756	12,900,034	1,417	5,199,305
Arts and Science, St. George						
Innis College	35%		503	4,230,711	73	218,200
New College	41%		1,442	12,480,016	211	615,300
University College	39%		1,362	11,864,282	179	459,300
Woodsworth College	42%		1,569	14,925,592	319	761,600
St. Michael's College	33%		1,148	9,769,476	144	377,300
Trinity College	33%		446	3,736,378	80	220,500
Victoria College	39%		1,045	8,541,472	169	425,700
Dentistry	71%		211	2,581,098	211	917,109
Law	51%		266	2,381,879		
Management	14%		100	870,044		
Medicine	70%		555	6,862,717		
Radiation Sciences	55%		213	2,850,835	41	44,300
Music	34%		115	995,973	20	45,600

OSAP AND UNIVERSITY OF TORONTO ADVANCED PLANNING FOR STUDENTS PROGRAM (UTAPS) BY FACULTY AND COLLEGE (continued)
2007-08

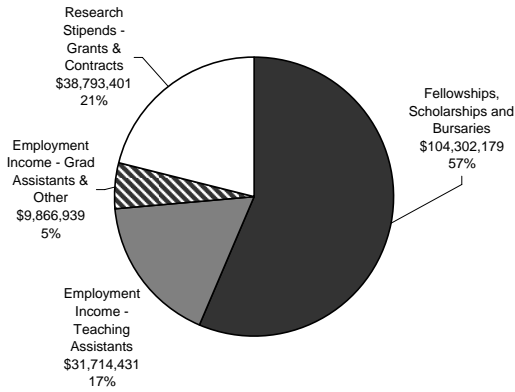
FACULTY / COLLEGE	OSAP APPLICANTS AS A PERCENTAGE OF		OSAP		UTAPS	
	FULL-TIME ENROLMENT	Number	Value (\$)	Number	Value (\$)	
Nursing	56%	155	2,073,785	60	157,800	
OISE/UT Undergraduate	38%	385	4,476,416	139	329,700	
OISE/UT Graduate	18%	171	2,012,512	133	506,405	
Pharmacy	59%	525	4,481,772	483	1,215,410	
Physical Education and Health	39%	183	1,459,287	21	29,900	
School of Graduate Studies	15%	1,030	10,526,328	866	2,494,265	
Transitional Year Program	88%	47	580,602	22	64,700	
U of T at Mississauga	41%	3,310	26,216,726	614	1,986,556	
U of T at Scarborough	51%	4,153	33,897,642	735	2,636,948	
Total	38%	20,690	180,715,577	5,937	18,705,899	

Notes:

1. UTAPS for School of Graduate Studies are also included in the totals shown in Graduate Student Support by Graduate Studies Division.
2. UTAPS at Law, Management and Medicine is distributed as part of their grants programs and are not included above.
3. UTAPS data in this table refers to grants awarded to OSAP recipients only.
4. OSAP amounts include Federal/Ontario loans/grants and Canada Millennium Bursaries.

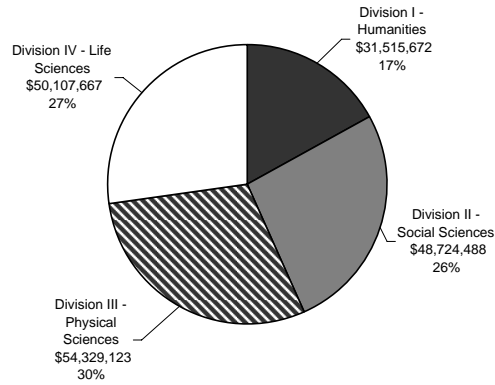
GRADUATE STUDENT SUPPORT BY SOURCE
2007-08

Total \$184,676,950*



GRADUATE STUDENT SUPPORT BY SCHOOL OF GRADUATE STUDIES DIVISION
2007-08

Total \$184,676,950*



*Does not include updated information on research stipends from affiliated teaching hospitals.

Part G

Faculty and Administrative Staff

Distribution of Full-Time Appointed Tenured/Tenure Stream Faculty by Major Division and Main Appointment	66
Distribution of Full-Time Tenured/Tenure Stream Faculty by Rank and Gender	67
Age Distribution of Tenured/Tenure Stream Faculty	67
Distribution of Full and Part-Time (>=25%) Academic Staff and Librarians by Rank and Gender	68
All Faculty with Teaching/Research Responsibilities	69
Distribution of Full and Part-Time Administrative and Union Staff	70
Operating Fund Full-Time Equivalent Staff	72

**DISTRIBUTION OF FULL-TIME APPOINTED TENURED/TENURE
STREAM FACULTY BY MAJOR DIVISION AND MAIN
APPOINTMENT**

All Sources of Funding
October 2007

DIVISION	MALE	FEMALE	TOTAL
Applied Science & Engineering	171	20	191
Architecture	11	3	14
Arts & Science*	464	215	679
Dentistry	34	9	43
Education (OISE/UT)**	55	77	132
Forestry	11	2	13
Information	8	5	13
Law	30	20	50
Management***	68	15	83
Medicine	114	71	185
Music	19	10	29
Nursing	2	18	20
Pharmacy	17	14	31
Physical Education & Health	8	6	14
School of Graduate Studies	12	4	16
Social Work	8	13	21
U of T Mississauga	149	57	206
U of T Scarborough	109	54	163
Total	1,290	613	1,903

* Arts & Science includes Transitional Year Program and the St. George campus colleges (Innis, New, University, Woodsworth, St. Michael's, Trinity, Victoria).

** OISE/UT excludes staff at the Institute of Child Studies

*** Management only includes Joseph L. Rotman School of Management

**DISTRIBUTION OF FULL-TIME TENURED/TENURE STREAM
FACULTY BY RANK AND GENDER**

All Sources of Funding
October 2007

RANK	MALE	FEMALE	TOTAL
Professor	636	187	823
Associate Professor	388	238	626
Assistant Professor	259	179	438
Assistant Professor (conditional)	7	9	16
Total	1,290	613	1,903

**AGE DISTRIBUTION OF FULL-TIME TENURED/TENURE
STREAM FACULTY**

October 2007

RANK	AVERAGE AGE
Professor	55.1
Associate Professor	47.0
Assistant Professor	37.4
Assistant Professor (conditional)	33.3

Note: Total number of Full-time Tenured/Tenure Stream
Faculty = 1,903.

DISTRIBUTION OF FULL AND PART-TIME (>=25%) ACADEMIC STAFF AND LIBRARIANS BY RANK AND GENDER

All Sources of Funding
October 2007

RANK	FULL-TIME		
	Male	Female	Total
Professor	750	214	964
Associate Professor	487	282	769
Assistant Professor	345	245	590
Assistant Professor (cond)	12	12	24
Lecturer (medical)	2	3	5
Instructor	7	4	11
Senior Lecturer/Lecturer	115	133	248
Senior Tutor/Tutor	10	7	17
Sub-Total	1,728	900	2,628
Librarian	40	89	129
Total	1,768	989	2,757

RANK	PART-TIME		
	Male	Female	Total
Professor	61	13	74
Associate Professor	43	23	66
Assistant Professor	34	41	75
Assistant Professor (cond)	1	1	2
Lecturer (medical)	1	3	4
Instructor	0	0	0
Senior Lecturer/Lecturer	32	54	86
Senior Tutor/Tutor	0	3	3
Sub-Total	172	138	310
Librarian	3	10	13
Total	175	148	323

DISTRIBUTION OF FULL AND PART-TIME (>=25%) ACADEMIC STAFF AND LIBRARIANS BY RANK AND GENDER(continued)

All Sources of Funding
October 2007

RANK	TOTAL		Total
	Male	Female	
Professor	811	227	1,038
Associate Professor	530	305	835
Assistant Professor	379	286	665
Assistant Professor (cond)	13	13	26
Lecturer (medical)	3	6	9
Instructor	7	4	11
Senior Lecturer/Lecturer	147	187	334
Senior Tutor/Tutor	10	10	20
Sub-Total	1,900	1,038	2,938
Librarian	43	99	142
Total	1,943	1,137	3,080

Notes:

Includes both tenured/tenure stream, non-tenure stream professorial ranks, teaching stream and other academics.

Does not include those currently identified as members of CUPE 3902 Unit 3.

Note - The Senior Tutor/Tutor group is being phased out.

ALL ACTIVE FACULTY WITH TEACHING/RESEARCH RESPONSIBILITIES

Fall 2007

	FULL-TIME	PART-TIME	TOTAL
Professoriate	2,093	166	2,259
Teaching Stream/Other	540	140	680
Clinical/Status Only/Adjunct	2,315	3,821	6,136
Sessional/Stipendiary		924	924
Total	4,948	5,051	9,999

**DISTRIBUTION OF FULL AND PART-TIME ADMINISTRATIVE
AND UNION STAFF**

September 2007

EMPLOYEE GROUP	FULL-TIME		
	Male	Female	Total
Non-Unionized Employees			
ESL Instructors	9	15	24
Research Associates	173	87	260
USW-exempt Admin staff*	337	527	864
Total non-unionized employees	519	629	1,148
Unionized Employees			
89 Chestnut St. Hospitality Workers	45	31	76
Administrative staff*	977	2134	3,111
Child Care Workers	2	23	25
Library Workers	55	103	158
Operating Engineers and Building Management Systems Technicians	80	2	82
Police	31	19	50
Research Associates & Officers	1	6	7
Service Workers	343	238	581
Sessional Lecturers	0	0	0
Teaching Assistants and OISE Graduate Assistants	0	0	0
Trades and Services**	75	1	76
Total unionized employees	1,609	2,557	4,166
Total	2,128	3,186	5,314

EMPLOYEE GROUP	PART-TIME		
	Male	Female	Total
Non-Unionized Employees			
ESL Instructors	1	1	2
Research Associates	15	13	28
USW-exempt Admin staff*	4	25	29
Total non-unionized employees	20	39	59
Unionized Employees			
89 Chestnut St. Hospitality Workers	0	0	0
Administrative staff*	47	215	262
Child Care Workers	6	6	12
Library Workers	6	11	17
Operating Engineers and Building Management Systems Technicians	0	0	0
Police	0	0	0
Research Associates & Officers	1	5	6
Service Workers	15	7	22
Sessional Lecturers	410	477	887
Teaching Assistants and OISE Graduate Assistants	2,050	1,884	3,934
Trades and Services**	0	0	0
Total unionized employees	2,535	2,605	5,140
Total	2,555	2,644	5,199

**DISTRIBUTION OF FULL AND PART-TIME ADMINISTRATIVE
AND UNION STAFF (continued)**
September 2007

EMPLOYEE GROUP	ALL		Total
	Male	Female	
Non-Unionized Employees			
ESL Instructors	10	16	26
Research Associates	188	100	288
USW-exempt Admin staff*	341	552	893
Total non-unionized employees	539	668	1,207
Unionized Employees			
89 Chestnut St. Hospitality Workers	45	31	76
Administrative staff*	1024	2349	3,373
Child Care Workers	8	29	37
Library Workers	61	114	175
Operating Engineers and Building Management Systems Technicians	80	2	82
Police	31	19	50
Research Associates & Officers	2	11	13
Service Workers	358	245	603
Sessional Lecturers	410	477	887
Teaching Assistants and OISE Graduate Assistants	2,050	1,884	3,934
Trades and Services**	75	1	76
Total unionized employees	4,144	5,162	9,306
Total	4,683	5,830	10,513

* Excludes Non University of Toronto Departments.

** Trades and Services includes Carpenters, Electricians, Machinists and Locksmiths, Painters, Plumbers, Steam fitters and Sprinkler fitters, Sheet Metal Workers, Stage Hands.

GROSS OPERATING FUND FULL-TIME EQUIVALENT STAFF
2008-09 Budget

DIVISION	ACADEMIC	NON-ACADEMIC*
Applied Science and Engineering	231.02	210.65
Architecture, Landscape, and Design	24.86	18.95
Arts & Science**	931.92	510.14
Colleges***	19.99	101.05
Dentistry	71.66	162.69
Forestry	13.92	7.00
Graduate Centres and Institutes	10.83	18.25
Information	20.15	52.50
Law	53.00	65.57
Management	110.04	156.40
Medicine	679.86	464.72
Mississauga, University of Toronto	272.63	97.37
Music	46.10	35.04
Nursing	36.47	20.00
OISE/UT	167.47	173.55
Pharmacy	43.55	35.30
Physical Education and Health	17.32	8.05
Scarborough, University of Toronto	270.71	97.38
Continuing Studies, School of	0.00	62.52
Graduate Studies, School of	5.60	46.50
Social Work	27.00	14.30
Transitional Year Program	9.75	2.50
Subtotal	3,063.85	2,360.43
Academic Services	5.00	603.40
Campus and Student Services	12.93	319.39
Central Administration	12.80	909.65
Facilities and Services	0.00	796.87
Other Academic Costs	0.00	1.00
Grand Total	3,094.58	4,990.74

* Librarians, Admin and Union staff are included in the non-academic group.

**Arts and Science includes Innis, New, St. Michael's, University College Programs related to Arts & Science.

***Colleges include Innis, New, University, Woodsworth programs and resources independent of Arts & Science

Note: These are budgeted FTEs which include TBA's and

Part H Library

Library Collections	74
Number of Loans	75
Number of Computers in the Library	75
Digital Library E-Resources	75

LIBRARY COLLECTIONS

2007-08

There are 32 libraries in the University of Toronto Library System.

COLLECTIONS	CENTRAL LIBRARIES	LOCAL LIBRARIES	SCARBOROUGH/ MISSISSAUGA	FEDERATED/ AFFILIATED	DIGITAL LIBRARY**	TOTAL
Books	7,875,333	1,068,862	662,344	1,357,297	434,314	11,398,150
Cartographic Materials	245,000		36,668	92		281,760
CD-ROM (Bibliog & Text)	5,048	1,032	283	693		7,056
Computer Data Files	847,941	352	0	6		848,299
Films & Videos	26,728	2,236	1,027	4,259		34,250
Graphic Materials	280,772	366,633	63,374	71,863		782,642
Microforms	5,191,738	132,515	38,178	130,797		5,493,228
Sheet Music		56,418	1,366	126		57,910
Sound Recording	10,371	187,708	4,186	3,885		206,150
Other Formats	32,391	35,422	266	547	54	68,680
Total	14,515,322	1,851,178	807,692	1,569,565	434,368	19,178,125
Current Serials	21,817	5,615	3,045	4,381	39,687	74,545
Manuscripts (Metres)	12,356	115	0	159		12,630

* Materials on transfer from Central to Local Libraries are shown in the counts for Local Libraries where they are located.
Bound volumes of subscriptions are included in the Book counts.

** Electronic resources (Books & Journals).

NUMBER OF LOANS

2007-2008

Central Libraries	
Robarts Library	1,195,746
Gerstein Science Information Centre	186,520
OISE/UT Library	127,097
Fisher Library/Archives	20,490
Media Commons	67,422
Branch Libraries	346,220
Sub-Total	1,943,495
Local Libraries**	403,381
UTMississauga Library	197,538
UTScarborough Library	84,581
Federated/Affiliated Libraries	595,206
Total	3,224,201

** Local Libraries include some Hospital Consortium Libraries

NUMBER OF COMPUTERS IN THE LIBRARY

April 30, 2008

Computers in the Network	2,229
Stand-Alone PC's	75

DIGITAL LIBRARY E-RESOURCES

April 30, 2008

	LICENSED*	PUBLIC**	TOTAL
Article Databases and Text Collections	847	118	965
e-Media	7	5	12
Journal Collections	28	3	31
E-Journals	32,822	3,727	36,549
PDA/Handheld	3	8	11
Reference Sources	1,289	145	1,434
Books	362,218	70,662	432,880
Newspapers and News Services	3,074	64	3,138
Total	399,441	74,614	474,055

* These items are available on the Internet for use by anyone.

** These items are available on the Internet for use by anyone.

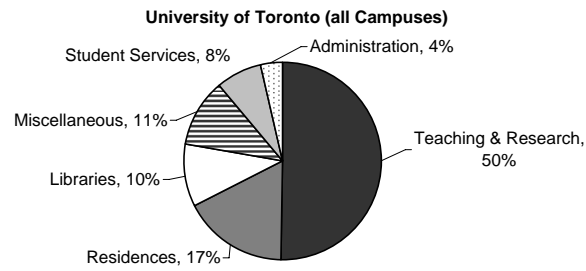
For current figures, see

<http://main.library.utoronto.ca/eir/EIRwhatsnew.cfm>

Part I Physical Plant

Usage of Assignable Space	78
Number of Buildings and Square Metres	79
Area of U of T Properties	80
Number of Parking Spaces	80
Number of Public Assembly Facilities	80
Number of University of Toronto Students in Residence	81

USAGE OF ASSIGNABLE SPACE
2007-08



	ST. GEORGE CAMPUS	MISSISSAUGA CAMPUS	SCARBOROUGH CAMPUS
Teaching & Research	54%	32%	39%
Residence	13%	37%	27%
Libraries	11%	6%	6%
Student Services	6%	12%	13%
Administration	4%	4%	6%
Miscellaneous	12%	9%	9%

Note: **Student Services** includes: Athletics, Food Services, Bookstore and Merchandising and Health Services.
Miscellaneous includes: Plant Maintenance, Assembly & Exhibition Facilities, Common Use and Student Activity and Other University Facilities.
Teaching and Research includes: Classrooms, Teaching and Research Laboratories, Academic Services, Health Science Clinic Facilities, Central Services and Media Services.

NUMBER OF BUILDINGS AND SQUARE METRES

2007-08 as at September 2008

	NUMBER OF BUILDINGS	NET ASSIGNABLE SQUARE METRES	NET SQUARE METRES	GROSS SQUARE METRES
University				
St. George	118	613,098	996,494	1,160,753
Leased St. George	5	3,052	3,786	4,255
Scarborough	27	59,428	92,043	107,328
Mississauga	47	90,134	150,016	170,477
Total University	197	765,712	1,242,339	1,442,813
Federated Colleges and Massey	50	97,499	146,647	183,015
Grand Total	247	863,211	1,388,986	1,625,828

Note: **Net Assignable Square Metres** is the sum of all areas on all floors of the building assigned to, or available for assignment to, an occupant, including every type of space functionality used by an occupant.
Net Square Metres is the sum of all areas on all floors of the building, both assigned (see definition above) and non-assigned (ie corridors, stairs, mechanical rooms etc.)
Gross Area Square Metres is the sum of all floors areas included within the outside faces of exterior walls, which have floor surfaces.

AREA OF U OF T PROPERTIES

2007-08

	HECTARES
CAMPUSES	
Downtown Campus	
St. George	53.3
Federated Colleges and Massey	17.9
Total Downtown Campus	71.2
Scarborough	122.5
Mississauga	89.4
Total Campuses	283.1
OFF CAMPUS	
Aerospace	11.9
Joker's Hill	346.0
Total Off Campus	357.9
Grand Total	641.0

Notes:

1. Excludes Huron/Sussex houses.
2. Total Downtown Campus includes St. George, Federated Colleges and Massey.

NUMBER OF PARKING SPACES

2007-08

	NUMBER OF SPACES
St. George	1,928
Scarborough	3,213
Mississauga	2,450
Total	7,591

NUMBER OF PUBLIC ASSEMBLY FACILITIES

2007-08

	NUMBER OF FACILITIES	SEATING CAPACITY
St. George Lecture Theatres / Hall*	47	10,979
St. George Auditorium	4	3,400
Dining Rooms and Cafeterias*	32	4,062
Varsity Arena	1	4,100

* Including Federated Colleges.

NUMBER OF UNIVERSITY OF TORONTO STUDENTS IN RESIDENCE
2007-08

	NUMBER OF FIRST-YEAR STUDENTS	NUMBER OF STUDENTS	TOTAL SPACES
University of Toronto Residences			
St. George Including Federated Universities			
89 Chestnut	318	904	1,012
Charles Street Apartments*	0	740	769
Graduate House	0	438	438
Innis College	197	325	325
New College	517	869	872
St. Michael's College	296	568	575
Trinity College	220	438	444
University College	401	749	749
Victoria University	349	768	775
Woodsworth College	216	370	370
Total St. George	2,514	6,169	6,329
University of Toronto Mississauga			
Graduate & Family Housing*	0	117	126
Undergraduate Housing	613	1,096	1,096
Total U of T at Mississauga	613	1,213	1,222
University of Toronto Scarborough	416	762	762
Total University of Toronto Residences	3,543	8,144	8,313
Independent Campus Residences			
Campus Co-Op	53	227	315
Knox College	4	96	103
Massey College	0	60	60
Neil-Wycik Co-Operative**	0	45	781
St. Vladimir Institute	0	26	46
Tartu College	30	350	450
Wycliffe College	0	49	82
Total Independent Residences	87	853	1,837
Grand Total	3,630	8,997	10,150

* Premises house students and their family. Some families may include 2 students.

** Premises house mainly Ryerson students.

Notes:

1. As of November 1, 2007.

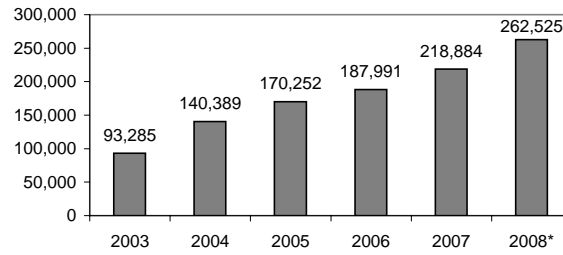
2. Includes Toronto School of Theology students.

Part J

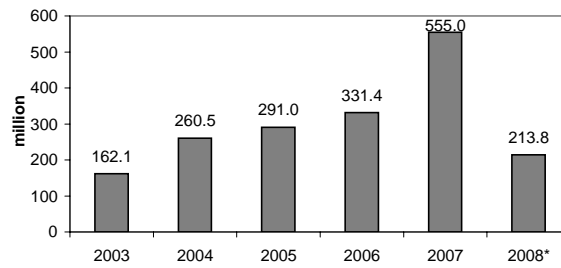
Computing and Communications

Number of UTORmail Accounts at Year End	84
Number of Messages Delivered by UTORmail Post Office	84
Number of Web Transactions	84
Institutional Internet Dial-in Services	
a) Dial-in Modem	85
b) Virtual Private Network (VPN)	85
Campus Wireless Network	85
Usage of Electronic Student Services	86

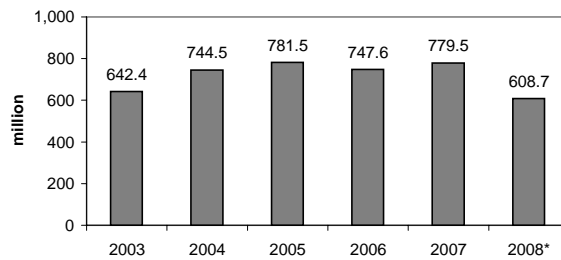
NUMBER OF UTOmail ACCOUNTS AT YEAR END
2003-2008



NUMBER OF MESSAGES DELIVERED BY UTOmail POST OFFICE
2003-2008
(In Millions)



NUMBER OF WEB TRANSACTIONS
For the institutional server www.utoronto.ca
2003-2008
(In Millions)



*Note: 2008 figures represent counts up to September 30, 2008.
2003-2007 figures cover the period from January 1 to December 31 of each year.

INSTITUTIONAL INTERNET DIAL-IN SERVICES
2003-2008

Dial-in Modem
Up to 56,000 bits per second

Date	Phone Lines	Active Users	Calls per Week
October 2003	333	5,600	52,000
October 2004	255	3,900	36,000
October 2005	124	2,400	21,000
October 2006	89	1,500	12,000
October 2007	47	900	7,600
October 2008	39	550	4,200

Virtual Private Network (VPN)*
Provides 'direct' access to the UofT network.

Date	Number of Users
December 2004	0
December 2005	610
December 2006	1,153
December 2007	1,823
September 2008	2,357

*Service first became available in January 2005.

CAMPUS WIRELESS NETWORK*
2003-2008

Date	Buildings	Access Points	Sessions per Week
October 2003	19	143	9,800
October 2004	24	244	14,000
October 2005	41	320	25,000
October 2006	66	495	42,000
October 2007	96	677	75,000
October 2008	105	768	95,000

USAGE OF ELECTRONIC STUDENT SERVICES*September 1, 2007 to August 31, 2008*

ACTIVITY	ROSI STUDENT WEB SERVICES rosi.utoronto.ca
Accessing the System	
Successful attempt to login	7,737,824
Unsuccessful attempt to login	141,687
Access suspended	6,222
Change PIN	53,732
Unsuccessful attempt to change PIN	1,225
Setup completed for PIN reactivation	24,408
Successful attempt to reactivate PIN	27,224
Unsuccessful attempt to reactivate PIN	8,513
Suspend PIN reactivation	4,928
Maintaining Personal Information	
Add bank information	3,404
Cancel bank information	162
Add new address	11,626
Change address	52,700
Add new contact information	3,663
Change contact information	1,818
Delete contact information	240
Add new telephone number	2,628
Change telephone number	5,055
Change e-mail address	55,900
Choosing/Changing Academic Options	
Add academic activity	638,422
Drop academic activity	350,433
Modify academic activity	244,867
Add waitlisted academic activity	166,621
Drop waitlisted academic activity	58,696
Modify waitlisted academic activity	7,104
List courses	5,002,703
Accept Subject POSt	10,630
Add new Subject POSt	58,184
Change Subject POSt	9,294
Delete Subject POSt	37,268
Cancel invited registration	333
Cancel registration/Deregister	5,276
Confirm graduation request	9,277
Viewing Financial Information	
View Financial Account - Invoice	793,916
View Financial Account - Detail	368,760
Requesting/Paying for Transcripts	
Request transcript, charged to account	14,277
Request transcript, paid electronically	36,933
Request transcript pending payment	43,369
Create electronic transcript invoice	41,565
Pay electronic transcript invoice	32,240
Unsuccessful electronic payment	2,850
Participating in Campus Life	
Submit an electronic vote	4,422

**Prepared by the Office of the Vice-President,
Government, Institutional and Community Relations
University of Toronto**

**Printed in Canada
by SLG Group Commercial Printing
2009**