

**UNIVERSITY  
OF TORONTO**



**2001**

**Facts &  
Figures**

**Facts and Figures** is prepared annually by the Office of the Vice-Provost, Planning and Budget. **Facts and Figures** provides answers to some of the most frequently asked questions about the University. It is designed and organized to serve as a useful and reliable source of reference information from year to year.

The reader of **Facts and Figures** should take care when attempting to use the enclosed information comparatively. While some definitions are common to other universities, many others are not. Our Office maintains some comparative databases and has access to some others. Please contact us for assistance in using Facts and Figures comparatively.

Each year we try to improve **Facts and Figures** to make it as useful as possible. We are always grateful for suggestions for improvement.

**Facts and Figures** can also be accessed on the World Wide Web at [www.library.utoronto.ca/facts/](http://www.library.utoronto.ca/facts/)

Other Official Publications of the University:

- **University of Toronto, Research and International Relations Annual Report 2001**  
(pdf file available at <http://www.library.utoronto.ca/rir/utindex.html>)

- **Performance Indicators for Governance Report, September 2001**  
(<http://www.utoronto.ca/provost/perf2001/index.htm>)

- **University of Toronto National Report, 2001** (<http://www.nationalreport.utoronto.ca/>)  
(<http://www.nationalreport.utoronto.ca/>)

- **University of Toronto Condensed Financial Report, April 30, 2001**  
([http://www.library.utoronto.ca/finance/april30\\_01/index.htm](http://www.library.utoronto.ca/finance/april30_01/index.htm))

Corinne Pask-Aubé is the manager of **Facts and Figures** for 2001. She deserves our gratitude for her efforts. She can be reached at (416) 978-7367 or through e-mail at [corinne.pask@utoronto.ca](mailto:corinne.pask@utoronto.ca).

Derek McCammond  
Vice-Provost, Planning and Budget  
Room 240, Simcoe Hall  
27 King's College Circle  
Toronto, Ontario  
M5S 1A1

## CONTENTS

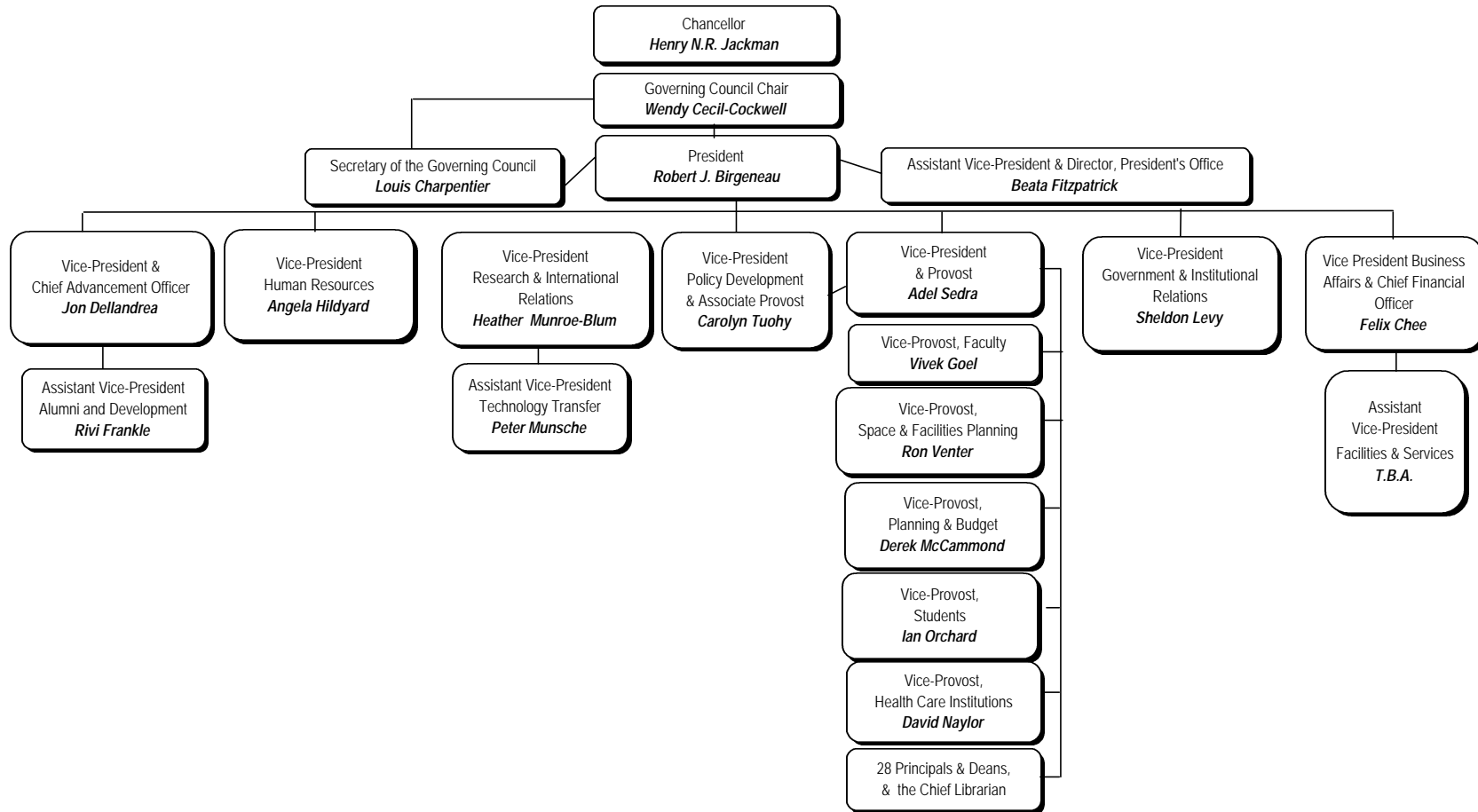
Page 1

<b>Part A</b>	<b>General</b>	3
	1. Organization of Senior Administration	
	2. Major Academic Divisions	
	3. Degrees, Diplomas and Certificates Offered	
<b>Part B</b>	<b>Finances</b>	13
	1. Statement of Operations	
	2. Changes in Surplus/Deficit	
	3. Operating Fund Expense Summary	
	4. Operating Fund: Academic Expense Summary	
	5. Restricted Funds	
<b>Part C</b>	<b>Research</b>	21
	1. Research Population	
	2. Revenue from Externally Sponsored Research	
	3. Academic Linkages with International Institutions	
	4. Technology Transfer Activities:	
	a) Invention Disclosures	
	b) Spin-off Companies	
	c) Industrial Contracts & Grants	
	d) Government Funding Leveraged by Industrial Collaboration	
<b>Part D</b>	<b>Students</b>	27
	1. Enrolment by Faculty/College	
	2. Enrolment: Age and Gender Balance	
	3. International Student Enrolment by Geographic Origin	
	4. International Students - Geographic Origin: 5 Year Trend	
	5. Ten Year Enrolment Trends, All Students	
	6. Gender Balance of Graduate and Undergraduate Enrolments by Field of Study	
	7. Undergraduate Intake by Faculty	
	8. Graduate Intake by Faculty	
	9. Total Intake	
	10. Degrees Awarded by Gender	
	11. Tuition Fees:	
	a) Domestic and International Students	
	b) Self-Funded Programs	
	c) OISE/UT Schools	
<b>Part E</b>	<b>Alumni</b>	47
	1. Alumni Counts by Region	
	2. Alumni Donations to the University by Region	
	3. Overall Fundraising Achievement	
	4. Overall Fundraising Achievement: Source of Donations	
	5. Alumni by College or Faculty Affiliation	

<b>CONTENTS</b> (continued)	<b>Page 2</b>
<b>Part F Student Awards</b>	<b>53</b>
1. Graduate Student Support by Source	
2. Graduate Student Support by S.G.S. Division	
Undergraduate Student Support : Admission Scholarships,	
3. In-Course Scholarships and Bursaries by Faculty and College	
4. OSAP and University of Toronto Advanced Planning for Students program (UTAPS) by Faculty and College	
<b>Part G Faculty and Administrative Staff</b>	<b>59</b>
1. Distribution of Full-Time Appointed Tenured/Tenure Stream Faculty by Major Division and Main Appointment	
2. Distribution of Full-Time Tenured/Tenure Stream Faculty by Rank and Gender	
3. Age Distribution of Tenured/Tenure Stream Faculty	
4. Academic Staff and Librarians: Distribution of Full and Part Time (>=25%) by Rank and Gender	
5. Distribution of Full and Part-Time Administrative and Union Staff	
6. Operating Fund Full-Time Equivalent Staff	
<b>Part H Library</b>	<b>67</b>
1. Library Collections	
2. Number of Loans	
3. Number of Computers in the Library	
4. Digital Library E-Resources	
5. Number of Electronic Articles Downloaded	
<b>Part I Physical Plant</b>	<b>71</b>
1. Usage of Assignable Space	
2. Physical Facts :	
a) Area of U of T Properties	
b) Number of Parking Spaces	
c) Number of Buildings and Gross Square Metres	
d) Public Assembly Facilities	
e) Number of Places in Student Residences	
<b>Part J Computing and Communications</b>	<b>77</b>
1. Number of UTORmail Accounts at Year End	
2. Messages Delivered by UTORmail Post Office	
3. Number of Web Transactions	
4. Institutional Internet Dial-in Service	
5. Usage of Electronic Student Services	

# Part A General

Organization of Senior Administration	4
Major Academic Divisions	5
Degrees, Diplomas and Certificates Offered	9



2001-2002

**Faculty of Applied Science and Engineering**

Aerospace Studies, Institute for  
Biomaterials and Biomedical Engineering, Institute of  
Chemical Engineering and Applied Chemistry  
Civil Engineering  
Edward S. Rogers Sr. Electrical and Computer Engineering  
Engineering Science, Division of  
Environmental Engineering, Division of  
Materials Science and Engineering  
Mechanical and Industrial Engineering  
Mineral Engineering, Lassonde Program

**Faculty of Architecture, Landscape, and Design**

**Faculty of Arts and Science - Departments**

Anthropology  
Astronomy & Astrophysics  
Botany  
Chemistry  
Classics  
Commerce & Finance Program  
Comparative Literature Centre  
Computer Science  
East Asian Studies  
Economics  
English  
Environment Division  
Fine Art  
French  
Geography  
Geology  
Germanic Languages & Literatures  
History  
History & Philosophy of Science & Technology, Institute for  
Human Biology Division  
Italian Studies  
Linguistics  
Mathematics  
Medieval Studies Centre  
Near & Middle Eastern Civilizations  
Philosophy  
Physics  
Political Science  
Psychology  
Religion, Centre for the Study of  
Religion  
Slavic Languages & Literatures  
Sociology  
Spanish & Portuguese  
Statistics  
Zoology

## **MAJOR ACADEMIC DIVISIONS**

2001-2002 (continued)

Page 6

### **Faculty of Arts and Science - Colleges (St. George Campus)**

Constituent Colleges:

Innis College

New College

University College

Woodsworth College

Federated Colleges:

St. Michael's College

Trinity College

Victoria College

### **School of Continuing Studies**

### **Faculty of Dentistry**

### **Faculty of Forestry**

### **Centres and Institutes**

Asia-Pacific Studies, Joint Centre for

Criminology, Centre of

Drama, Centre for the Study of

Environmental Studies, Institute for

Human Development, Life Course and Aging, Institute for

Industrial Relations, Centre for

International Relations, Centre for

Knowledge Media Design Institute

Museum Studies Program

Policy Analysis, Institute for

Russian and East European Studies, Centre for

South Asian Studies, Centre for

Theoretical Astrophysics, Canadian Institute for

Urban and Community Studies, Centre for

### **School of Graduate Studies**

Division I - Humanities

Division II - Social Sciences

Division III - Physical Sciences

Division IV - Life Sciences

### **Faculty of Information Studies**

Mcluhan Program in Culture and Technology

### **Faculty of Law**

### **Joseph L. Rotman School of Management**



## **MAJOR ACADEMIC DIVISIONS**

2001-2002 (continued)

Page 7

### **Faculty of Medicine**

Anaesthesia  
Anatomy and Cell Biology  
Banting and Best Department of Medical Research  
Biochemistry  
Biomaterials and Biomedical Engineering, Institute of  
Community Health  
Family and Community Medicine  
Health Policy, Management and Evaluation  
Immunology  
Laboratory Medicine and Pathobiology  
Medical Biophysics  
Medical Genetics and Microbiology  
Medical Imaging  
Medical Science, Institute of  
Medicine  
Nutritional Sciences  
Obstetrics and Gynaecology  
Occupational Therapy  
Ophthalmology  
Otolaryngology  
Paediatrics  
Pharmacology  
Physical Therapy  
Physiology  
Psychiatry  
Public Health Sciences  
Radiation Oncology  
Rehabilitation Science  
Speech-Language Pathology  
Surgery

### **Faculty of Music**

History & Culture of Music  
Music Education  
Musical Theory & Composition  
Opera  
Performance  
Canadian Music, Institute for  
Canadian Music Education Research Centre

### **Faculty of Nursing**

#### **OISE/UT**

Adult Education, Community Development  
and Counseling Psychology  
Curriculum, Teaching and Learning  
Human Development and Applied Psychology  
Sociology and Equity Studies in Education  
Theory and Policy Studies in Education

## **MAJOR ACADEMIC DIVISIONS**

2001-2002 (continued)

Page 8

### **Leslie L. Dan Faculty of Pharmacy**

### **Faculty of Physical Education and Health**

### **Faculty of Social Work**

Anti-Racism, Multiculturalism & Native Issues (AMNI) Initiative  
Bell Canada Child Welfare Research Unit  
Centre for Applied Social Research

### **Transitional Year Program**

### **University of Toronto at Mississauga**

Humanities  
Social Sciences  
Sciences

### **University of Toronto at Scarborough**

Division of Humanities  
Division of Life Sciences  
Division of Management  
Division of Physical Sciences  
Division of Social Sciences

### **Woodsworth College**

Professional and International Programs  
Millie Rotman Shime Academic Bridging Program  
Millie Rotman Shime Pre-University Mathematics Program

**UNDERGRADUATE AND FIRST PROFESSIONAL DEGREES**

**Faculty of Applied Science and Engineering:**

Bachelor of Applied Science B.A.Sc.

**Faculty of Arts and Science**

**St. George Campus:**

Honours Bachelor of Arts Hon.B.A.

Honours Bachelor of Science Hon.B.Sc.

Bachelor of Commerce B.Com.

**University of Toronto at Mississauga:**

Honours Bachelor of Arts Hon.B.A.

Bachelor of Arts B.A.

Honours Bachelor of Science Hon.B.Sc.

Bachelor of Science B.Sc.

Bachelor of Commerce B.Com.

**University of Toronto at Scarborough:**

Honours Bachelor of Arts Hon.B.A.

Bachelor of Arts B.A.

Honours Bachelor of Science Hon.B.Sc.

Bachelor of Science B.Sc.

Bachelor of Business Administration B.B.A.

**Faculty of Dentistry:**

Doctor of Dental Surgery D.D.S.

Bachelor of Science in Dentistry (Dental Hygiene) B.Sc.D.(Dent. Hygiene)

**Faculty of Law:**

Juris Doctor J.D.

**Faculty of Medicine:**

Doctor of Medicine M.D.

Bachelor of Science, Radiation Science B.Sc.Rad.Sc.

**Faculty of Music:**

Bachelor of Music Mus.Bac.

Bachelor of Music in Performance Mus Bac.Perf.

**Faculty of Nursing:**

Bachelor of Science in Nursing B.Sc.N.

**OISE/UT:**

Bachelor of Education B.Ed.

**Leslie L. Dan Faculty of Pharmacy:**

Doctor of Pharmacy Pharm.D.

Bachelor of Science in Pharmacy B.Sc.Phm.

**Faculty of Physical Education and Health:**

Bachelor of Physical and Health Education B.P.H.E.

## DEGREES, DIPLOMAS AND CERTIFICATES OFFERED

Page 10

2001-2002 (continued)

### UNDERGRADUATE AND FIRST PROFESSIONAL DIPLOMAS AND CERTIFICATES

#### **Faculty of Dentistry:**

Certificate of Qualification in Dentistry

Cert.Q.P.Dent.

#### **Faculty of Music:**

Artist Diploma

Art.Dip.Mus.

#### **Faculty of Nursing:**

Certificate as a Nurse Practitioner (Primary Health Care)

Cert.N.P.(PHC)

#### **OISE/UT:**

Diploma in Technical Education

Dip.T.Ed.

#### **University of Toronto at Scarborough:**

Certificate in Business

Cert.Bus.

#### **Woodsworth College:**

Certificate in Human Resource Management

C.H.R.M.

Certificate in Teaching English as a Second Language

C.T.E.S.L.

2001-2002 (continued)

## GRADUATE DEGREES

## School of Graduate Studies:

Juris Doctor and Doctor of Philosophy	J.D./Ph.D.
Juris Doctor and Master of Business Administration	J.D./M.B.A.
Juris Doctor and Master of Arts (Economics)	J.D./M.A.
Juris Doctor and Collaborative MA in International Relations	J.D./M.A.
Juris Doctor and Master of Social Work	J.D./M.S.W.
Doctor of Dentistry and Doctor of Philosophy	D.D.S./Ph.D.
Doctor of Education	Ed.D.
Doctor of Juridical Science	S.J.D.
Doctor of Medicine and Doctor of Philosophy	M.D./Ph.D.
Doctor of Music	Mus. Doc.
Doctor of Philosophy	Ph.D.
Master of Applied Science	M.A.Sc.
Master of Architecture	M.Arch.
Master of Arts	M.A.
Master of Arts in Teaching	M.A.(T.)
Master of Business Administration	M.B.A.
Master of Business Administration and Master of Arts in Russian and East European Studies	M.B.A./M.A.(REES)
Master of Business Administration and Master of Nursing	M.B.A./M.N.
Master of Business Administration and Jeffrey Skoll Bachelor of Applied Science	M.B.A./B.A.Sc.
Master of Education	M.Ed.
Master of Engineering	M.Eng.
Master of Engineering in Design and Manufacturing	M.Eng.D.M.
Master of Engineering in Telecommunications	M.Eng.Tel.
Master of Forest Conservation	M.F.C.
Master of Health Science	M.H.Sc.
Master of Health Science in Health Administration/ Master of Social Work	M.H.Sc./M.S.W.
Master of Industrial Relations	M.I.R.
Master of Information Studies	M.I.St.
Master of Landscape Architecture	M.L.A.
Master of Laws	LL.M.
Master of Management & Professional Accounting	M.M.P.A.
Master of Mathematical Finance	M.M.F.
Master of Museum Studies	M.M.St.
Master of Music	Mus.M.
Master of Nursing	M.N.
Master of Science	M.Sc.
Master of Science in Biomedical Communication	M.Sc.BMC.
Master of Science in Forestry	M.Sc.F.
Master of Science in Occupational Therapy	M.Sc.O.T.
Master of Science in Planning	M.Sc.Pl.
Master of Science in Physical Therapy	M.Sc.P.T.
Master of Social Work	M.S.W.
Master of Spatial Analysis	M.S.A.
Masters in Studies in Law	M.S.L.
Master of Teaching	M.T.
Master of Urban Design	M.U.D.
Master of Urban Design Studies	M.U.D.S.

## DEGREES, DIPLOMAS AND CERTIFICATES OFFERED

Page 12

2001-2002 (continued)

### GRADUATE DEGREES WITH ADVANCED SPECIALTY TRAINING, GRADUATE DIPLOMAS AND GRADUATE CERTIFICATES

#### Faculty of Applied Science and Engineering:

Professional Pilot and Aviation Management Diploma

Dip.P.P.A.M.

#### Faculty of Dentistry:

M.Sc. Advanced Dental Specialty Degree Program:

Dental Anaesthesia

Dental Public Health

Endodontics

Oral Pathology

Oral Pathology and Medicine

Oral Radiology

Oral and Maxillofacial Surgery and Anaesthesia

Orthodontics

Paediatric Dentistry

Periodontology

Prosthodontics

#### Faculty of Medicine:

Diploma in Child Psychiatry

D.Child Psych.

Diploma in Clinical Chemistry

D.Cl.Chem.

Diploma in Industrial Health

D.I.H.

Diploma in Medical Microbiology

D.M.M.

Diploma in Ophthalmic Science

D.Oph.Sci.

Diploma in Public Health

D.P.H.

#### Faculty of Music:

Diploma in Operatic Performance

Dip.Op.Perf.

Advanced Certificate in Performance

Adv.Cert.Perf.

#### Faculty of Nursing:

Post Masters Nurse Practitioners Diploma

Dip.N.P.

#### Faculty of Social Work:

Diploma in Social Work Research

Res.Dip.S.W.

#### OISE

Diploma Program in Holocaust & Genocide Education

#### Rotman School of Management

Advanced Program in Human Resources Management

C.H.R.P.

Advanced Program in Managing Strategic Change

Certificate in Aerospace Management

Diploma in Aerospace Management

Diploma in Investigative & Forensic Accounting

D.I.F.A.

# Part B Finances

Statement of Operations	14
Changes in Surplus/Deficit	16
Operating Fund Expense Summary	17
Operating Fund: Academic Expense Summary	18
Restricted Funds	19

**STATEMENT OF OPERATIONS***for the year ended April 30, 2001*

(with comparative figures for the year ended April 30, 2000)

(thousands of dollars)

	<b>OPERATING FUND</b>	<b>ANCILLARY OPERATIONS</b>	<b>CAPITAL FUND</b>	<b>RESTRICTED FUNDS</b>	<b>TOTAL 2001</b>	<b>TOTAL 2000</b>
<b>Revenues</b>						
Government Grants - general operations	\$380,675				\$380,675	\$357,686
Government & other grants - restricted purposes			2,912	128,234	131,146	100,218
Student Fees	294,828	4,448	477		299,753	275,127
Sales, services and sundry income	53,244	77,011	1,944		132,199	131,543
Contract research	6,108			25,330	31,438	27,313
Investment income						
Endowments*	30,677			(38,687)	(8,010)	95,718
Other	14,444	2,067	8,109	5,530	30,150	29,431
Donations		264	11,609	32,393	44,266	49,542
<b>Total Revenues</b>	<b>\$779,976</b>	<b>\$83,790</b>	<b>\$25,051</b>	<b>\$152,800</b>	<b>\$1,041,617</b>	<b>\$1,066,578</b>



**STATEMENT OF OPERATIONS (continued)***for the year ended April 30, 2001*

(with comparative figures for the year ended April 30, 2000)

(thousands of dollars)

	OPERATING FUND	ANCILLARY OPERATIONS	CAPITAL FUND	RESTRICTED FUNDS	TOTAL 2001	TOTAL 2000
<b>Expenses</b>						
Academic	\$498,976			\$178,094	\$677,070	\$597,433
Academic services	41,977			966	42,943	40,494
Student services and assistance	85,572				85,572	68,920
Operation & maintenance of physical plant	67,242	9,607			76,849	65,016
Administration	37,851	9,039			46,890	48,026
Interest	1,101	3,813			4,914	3,937
Cost of sales and services		55,752			55,752	54,906
Contract research				23,208	23,208	20,988
Renovations	375		19,330	2,458	22,163	15,978
Amortization	1,097	4,020	55,120		60,237	57,891
Other	9,047		439	2,338	11,824	25,005
<b>Total Expenses</b>	<b>\$743,238</b>	<b>\$82,231</b>	<b>\$74,889</b>	<b>\$207,064</b>	<b>\$1,107,422</b>	<b>\$998,594</b>

**CHANGES IN SURPLUS/DEFICIT***for the year ended April 30, 2001*

(with comparative figures for the year ended April 30, 2000)

(thousands of dollars)

	OPERATING FUND	ANCILLARY OPERATIONS	CAPITAL FUND	RESTRICTED FUNDS	TOTAL 2001	TOTAL 2000
Revenue Less Expenses:	\$36,738	\$1,559	(\$49,838)	(\$54,264)	(\$65,805)	\$67,984
Net Transfers between funds	(24,807)	(3,559)	13,235	15,131		
Transfer of Capital Assets	(30,775)		30,775			
Change in funds committed for specific purposes	13,059	3,803	8,144	(10,048)	14,958	(11,448)
Change in investment in capital assets		(2,644)	(3,235)		(5,879)	(6,119)
Transfers of donations (to)/from endowments				(8,393)	(8,393)	(1,378)
Transfer from internally and externally restricted endowments				57,574	57,574	
Transfer of investment income earned on internally restricted endowments for capital preservation						(50,580)
<b>Net change in surplus (deficit) for the year</b>	<b>(\$5,785)</b>	<b>(\$841)</b>	<b>(\$919)</b>		<b>(\$7,545)</b>	<b>(\$1,541)</b>
Surplus (deficit), beginning of the year	(\$5,289)	\$48	(\$6,466)		(\$11,707)	(\$10,166)
<b>Surplus (deficit), end of year</b>	<b>(\$11,074)</b>	<b>(\$793)</b>	<b>(\$7,385)</b>		<b>(\$19,252)</b>	<b>(\$11,707)</b>

**OPERATING FUND EXPENSE SUMMARY**

Expense Summary for the year ended April 30, 2001  
(with comparative totals for the year ended April 30, 2000)

(thousands of dollars)

	ACADEMIC SALARIES	OTHER SALARIES	STAFF BENEFITS	TOTAL SALARIES AND BENEFITS	SUPPLIES AND OTHER EXPENSES	SCHOLARSHIPS FELLOWSHIPS BURSARIES	TOTAL	ELIMINATIONS AND RECLASSIFICATIONS	TOTAL DIVISIONAL EXPENSE
Academic	\$270,784	\$101,914	\$62,875	\$435,573	\$104,765	\$387	\$540,725	(\$34,897)	\$505,829
Academic Services	13,700	17,205	5,419	36,324	32,159		68,482	(5,409)	63,073
Campus & Student Services		8,910	1,342	10,253	5,536	12	15,800	26	15,827
Student Assistance		1,997	224	2,220	967	68,247	71,435	(1,221)	70,214
Operation & Maintenance of Physical Plant		29,392	5,188	34,580	72,493		107,073	(38,969)	68,104
Administration		32,482	5,834	38,315	13,923		52,238	(12,392)	39,846
Interest								1,102	1,102
Renovations and Alterations					3,131		3,131	(3,256)	(125)
Amortization								1,097	1,097
Other Expenditures		5,552	1,193	6,745	13,248		19,993	(10,947)	9,046
<b>Sub-Total</b>	<b>284,484</b>	<b>197,451</b>	<b>82,075</b>	<b>564,010</b>	<b>246,222</b>	<b>68,646</b>	<b>878,878</b>	<b>(104,865)</b>	<b>774,013</b>
Eliminations	(2,732)	(21,173)	(14,129)	(38,034)	(\$66,831)		(104,865)		
<b>Total Expenses</b>	<b>\$281,753</b>	<b>\$176,278</b>	<b>\$67,945</b>	<b>\$525,976</b>	<b>\$179,391</b>	<b>\$68,646</b>	<b>\$774,013</b>		<b>774,013</b>
1999-00 Comparatives	\$256,930	\$177,965	\$37,468	\$472,363	\$165,512	\$55,899	\$693,774		
Percentage Change	9.66%	-0.95%	81.34%	11.35%	8.39%	22.80%	11.57%		

Note: "Eliminations and Reclassifications" column represent external recovery of salaries and benefits as well as internal departmental changes between different functional groups.

**OPERATING FUND EXPENSES:**  
**ACADEMIC EXPENSE SUMMARY**  
*For the year ending April 30, 2001*  
(thousands of dollars)

	<b>NET EXPENSES</b>
	<b>2000-01</b>
<b>Arts &amp; Science, Colleges &amp; Schools:</b>	
Arts & Science	\$127,650
Federated Colleges Block Grant	8,603
Graduate Centres & Institutes	8,511
Innis College	1,052
Mississauga, University of Toronto at - Academic	29,344
New College	1,995
Scarborough, University of Toronto at - Academic	32,447
School of Continuing Studies	8,944
School of Graduate Studies	3,212
Transitional Year Program	1,068
University College	1,697
Woodsworth College	11,848
<b>Health Science Faculties/Schools:</b>	
Dentistry	\$19,080
Medicine	73,117
Nursing	3,863
Pharmacy	5,931
Physical Education and Health	13,849
<b>Other Professional Faculties:</b>	
Applied Science & Engineering	44,936
Architecture, Landscape, and Design	4,798
Forestry	2,034
Information Studies	3,309
Law	12,098
Management	21,121
Music	7,502
OISE/UT	54,678
Social Work	5,302
<b>Other Academic</b>	<b>(2,160)</b>
<b>Total Academic Expense</b>	<b>\$505,829</b>

**RESTRICTED FUNDS**

for the year ending April 30, 2001 (with comparative figures for the year ended April 30, 2000)

(thousands of dollars)

	ENDOWMENT FUNDS		EXPENDABLE FUNDS	
	2001	2000	2001	2000
l'Anson Fund	\$11,587	\$20,043	\$3,777	\$2,886
Connaught Funds	107,923	113,673	5,737	5,246
Departmental Funds	117,952	114,219	104,056	95,338
Faculty Endowment Funds	322,525	287,979	7,351	4,237
General Endowment Funds	14,327	30,336	0	0
Miscellaneous Funds	33,464	35,479	100,487	91,492
Research Funds	72,799	71,608	172,125	120,729
Student Aid Funds	168,481	154,872	25,364	21,264
Ontario Student Opportunity Trust Funds	327,158	343,105	20,133	16,151
<b>Total University of Toronto</b>	<b>\$1,176,216</b>	<b>\$1,171,314</b>	<b>\$439,030</b>	<b>\$357,343</b>
<b>Affiliated Universities</b>	<b>163,709</b>	<b>168,100</b>	<b>na</b>	<b>na</b>
<b>Total</b>	<b>1,339,925</b>	<b>1,339,414</b>	<b>na</b>	<b>na</b>



# Part C Research

Research Population	22
Revenue from Externally Sponsored Research	23
Academic Linkages with International Institutions	24
Technology Transfer Activities:	
a) Invention Disclosures	25
b) Spin-off Companies	25
c) Industrial Contracts & Grants	26
d) Government Funding Leveraged by Industrial Collaboration	26

## RESEARCH POPULATION

September 2001

Page 22

	<b>HUMANITIES</b>	<b>SOCIAL SCIENCES</b>	<b>PHYSICAL SCIENCES</b>	<b>LIFE SCIENCES</b>	<b>TOTAL</b>
Full-Time Faculty*	416	575	489	825	2,305
Part-Time Faculty	20	11	24	191	246
Status-Only Faculty	31	109	147	2,533	2,820
Full-Time Research Associates	4	6	66	51	127
Part-Time Research Associates	0	3	11	3	17
Post-Doctoral Fellows	29	13	99	213	354
Graduate Students	1,300	4,261	1,852	2,637	10,050

\*Faculty includes professorial ranks only.

Notes: Faculty members may have multiple appointments; in 2001 only the main appointment was counted in the research population.

The figure for Post-Doctoral Fellows for 2001 may be understated due to incomplete records.

Includes OISE.

Numbers shown here may differ from Full Time Faculty counts in other tables because of selection criteria for inclusion in the research population.



## REVENUE FROM EXTERNALLY SPONSORED RESEARCH

(thousands of dollars)

	1998-1999	1999-2000	2000-2001
<b>University of Toronto</b>			
Grants	\$126,450	\$180,584	\$232,899
Contracts	22,836	21,747	25,330
Donations	2,857	4,061	3,485
<b>Subtotal</b>	<b>152,143</b>	<b>206,392</b>	<b>261,714</b>
Overhead	6,669	8,796	19,160
<b>Total, University of Toronto</b>	<b>\$158,812</b>	<b>\$215,188</b>	<b>\$280,874</b>
<b>Affiliated Hospitals*</b>	\$162,563	\$195,603	195,603**
<b>Grand Total</b>	<b>\$321,375</b>	<b>\$410,791</b>	<b>\$476,477**</b>

\* Overhead excluded.

\*\* Estimate only, using last year's figure for revenue of Affiliated Hospitals

## ACADEMIC LINKS BETWEEN THE UNIVERSITY OF TORONTO AND INTERNATIONAL INSTITUTIONS

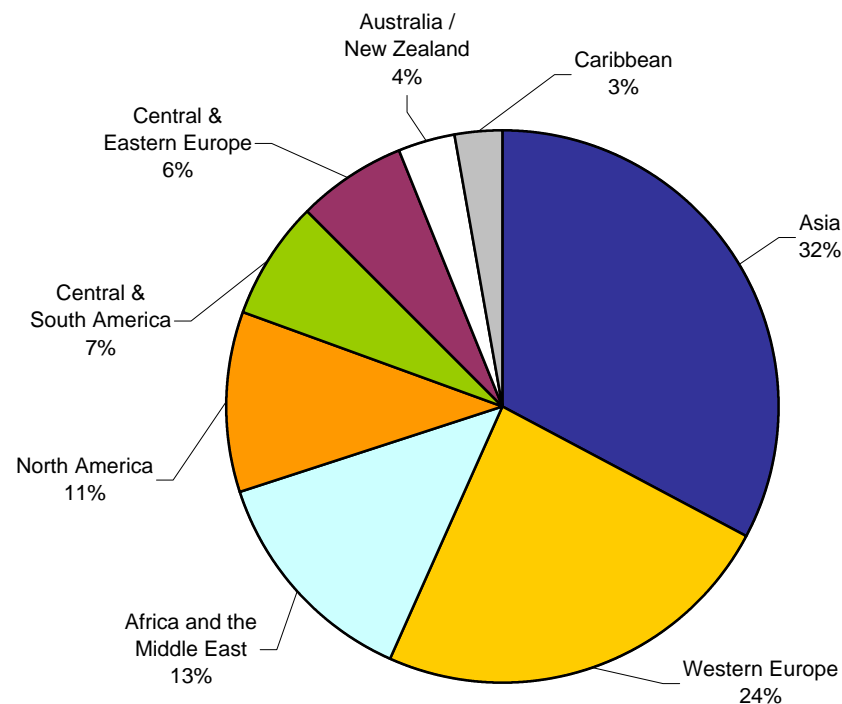
October 2001

REGION	NUMBER OF MOU'S*
Asia	37
Western Europe	27
Africa and the Middle East	15
North America	12
Central & South America	8
Central & Eastern Europe	7
Australia / New Zealand	4
Caribbean	3
<b>Total</b>	<b>113</b>

\*MOU's: Memoranda of Understanding are formal arrangements between institutions, which outline how they plan to cooperate over a specified period of time (normally, five years).

The areas included in MOU's are:

- joint research activities,
- participation in each institution's seminars and academic meetings,
- exchange of academic materials,
- short-term academic programs, and
- exchange of students.



**INVENTION DISCLOSURES**

	<b>1998-99</b>	<b>1999-00</b>	<b>2000-01</b>
Number of Inventions Disclosed*	91	127	123
Gross Royalties			
Innovations Foundation	\$575,508	\$1,446,747	\$3,260,247
Other	624,492	1,344,153	430,000
<b>Total Gross Royalties</b>	<b>\$1,200,000</b>	<b>\$2,790,900</b>	<b>\$3,690,247</b>

\* Excluding affiliated hospital inventions.

**SPIN-OFF COMPANIES**

	<b>1998-99</b>	<b>1999-2000</b>	<b>1999-2000</b>
Number of Active companies	89	100	94
Number of Employees in Canada	3,250	3,700	4,264
Reported Annual Revenue	\$419,000,000	\$421,000,000	\$640,000,000

**INDUSTRIAL CONTRACTS AND GRANTS\****(April 1999 - March 2000)*

Contracts	\$38,650,000
Grants	\$19,790,000
<b>Total industrial research funding</b>	<b>\$58,440,000</b>

**GOVERNMENT FUNDING LEVERAGED BY INDUSTRIAL COLLABORATION\***

<b>Networks of Centres of Excellence</b> <i>(April 1999 - March 2000)</i>	UofT involved in 16 of 18	\$7,560,000
<b>Ontario Centres of Excellence</b> <i>(April 1999 - March 2000)</i>	UofT involved in 4 of 4	\$8,450,000
<b>Ontario Research and Development Challenge Fund</b> <i>(April 1999 - March 2000)</i>		\$18,440,000
<b>Federal Granting Councils:</b> <i>(April 2000 - March 2001)</i>		
<b>NSERC</b>	University/Industry Programs**	\$3,420,000
<b>CIHR</b>	University/Industry Programs**	\$1,300,000
<b>SSHRC</b>	University/Industry Programs**	\$60,000
<b>Total government funding leveraged by industrial collaboration</b>		<b>\$39,230,000</b>

\* Includes the affiliated hospitals.

\*\* Excludes the Networks of Centres of Excellence.

# Part D

## Students

Enrolment by Faculty/College	28
Enrolment: Age and Gender Balance	30
International Students Enrolment by Geographic Origin	31
International Students - Geographic Origin: 5 Year Trend	32
Ten Year Enrolment Trends, All Students	35
Gender Balance of Graduate and Undergraduate Enrolments by Field of Study	36
Undergraduate Intake by Faculty	37
Graduate Intake by Faculty	38
Total Intake	38
Degrees Awarded by Gender	39
Tuition Fees:	
a) Domestic and International Students	40
b) Self-Funded Programs	44
c) OISE/UT Schools	45

**ENROLMENT BY FACULTY/COLLEGE**

November 1, 2000

FACULTY/COLLEGE	UNDERGRADUATE			GRADUATE DEGREES/ GRADUATE DIPLOMAS			ALL STUDENTS		FTE STUDENTS		
	Full-Time	Part-Time	% Female	Full-Time	Part-Time	% Female	Total	% Female	Under-graduate	Graduate	Total
St. George Campus	15,204	5,837	59	2,308	148	47	23,497	58	16,773	2,352	19,125
Scarborough Campus	4,347	1,405	57	57	1	64	5,810	57	4,679	57	4,736
Mississauga Campus	4,451	1,622	61	91	1	51	6,165	60	4,818	91	4,909
<b>Total Arts &amp; Science</b>	<b>24,002</b>	<b>8,864</b>	<b>59</b>	<b>2,456</b>	<b>150</b>	<b>48</b>	<b>35,472</b>	<b>58</b>	<b>26,269</b>	<b>2,501</b>	<b>28,770</b>
Applied Science & Engineering	3,322	167	27	899	265	20	4,653	25	3,408	979	4,387
Architecture, Landscape & Design	128	3	45	108	4	46	243	46	120	109	229
Dentistry	348	2	46	85	1	37	436	44	346	85	431
Forestry	0	0	na	87	0	43	87	43	0	87	87
Graduate Centres & Institutes	0	0	na	253	37	65	290	65	0	264	264
Information Studies	0	0	na	145	102	64	247	64	0	176	176
Law	513	2	54	62	3	54	580	54	477	63	540
Management	0	0	na	331	266	30	597	30	0	411	411
Management at UT Mississauga	0	0	na	87	0	60	87	60	0	87	87
Medicine	2,617	0	43	1,626	145	59	4,388	49	2,617	1,670	4,287
Music	439	30	57	118	6	61	593	58	482	120	602

**ENROLMENT BY FACULTY/COLLEGE** (continued)

November 1, 2000

FACULTY/COLLEGE	UNDERGRADUATE			GRADUATE DEGREES/ GRADUATE DIPLOMAS			ALL STUDENTS		FTE STUDENTS		
	Full- Time	Part- Time	% Female	Full- Time	Part- Time	% Female	Total	% Female	Under- graduate	Graduate	Total
Nursing	59	9	88	106	221	98	395	96	61	172	233
Occupational Therapy	118	0	96	0	0	na	118	96	118	0	118
OISE/UT	1,144	1,540	72	1,141	1,040	76	4,865	74	1,470	1,453	2,923
Pharmacy	517	4	68	58	9	60	588	67	544	61	605
Physical Education & Health	401	32	62	32	3	54	468	62	414	33	447
Physical Therapy	191	1	73	0	0	na	192	73	192	0	192
Social Work	0	0	na	263	39	84	302	84	0	275	275
Transitional Year Program	55	152	59	0	0	na	207	59	85	0	85
Woodworth Certificate and Diploma Programs	14	290	80	0	15	100	319	81	109	5	114
<b>Grand Total</b>	<b>33,868</b>	<b>11,096</b>	<b>57</b>	<b>7,857</b>	<b>2,306</b>	<b>55</b>	<b>55,127</b>	<b>57</b>	<b>36,712</b>	<b>8,549</b>	<b>45,261</b>

Note: Excludes 692 FTE students in the Toronto School of Theology and 27 part-time enrolments in the Woodsworth Pre-University (Math) program.

	HEADCOUNT	FTE
First Entry Undergraduate	37,598	30,774
Doctoral Stream Graduate	6,727	6,334
Undergraduate and Graduate Professional	10,802	7,844
<b>Total</b>	<b>55,127</b>	<b>44,952</b>

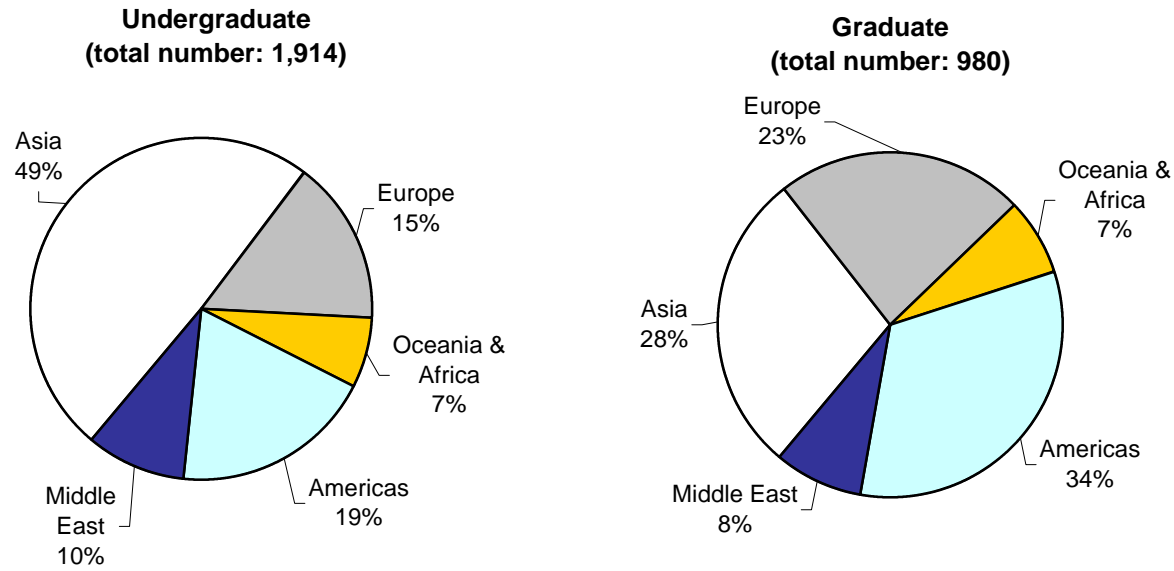
**ENROLMENT: AGE AND GENDER BALANCE**  
**1990 vs. 2000**  
 November 1

	1990			2000		
	Male	Female	Total	Male	Female	Total
<b>Full-Time Undergraduate</b>						
Number	15,722	16,731	32,453	14,922	18,935	33,857
Percent	48.4%	51.6%	100%	44.1%	55.9%	100%
Median Age	21.6	21.3	21.4	22.2	21.7	21.9
<b>Full-Time Graduate</b>						
Number	2,869	2,327	5,196	3,705	4,152	7,857
Percent	55.2%	44.8%	100%	47.2%	52.8%	100%
Median Age	28.1	27.9	28.0	29.7	30.7	30.2
<b>Part-Time Undergraduate</b>						
Number	4,642	7,528	12,170	4,487	6,602	11,089
Percent	38.1%	61.9%	100%	40.5%	59.5%	100%
Median Age	26.0	28.9	27.6	26.6	29.3	28.2
<b>Part-Time Graduate</b>						
Number	1,286	954	2,240	828	1,477	2,305
Percent	57.4%	42.6%	100%	35.9%	64.1%	100%
Median Age	30.5	31.0	30.7	34.9	36.9	36.2

Note: 2000 data excludes 11 full-time undergraduate students, 7 part-time undergraduate students and 1 part-time graduate student with no birthdate data.

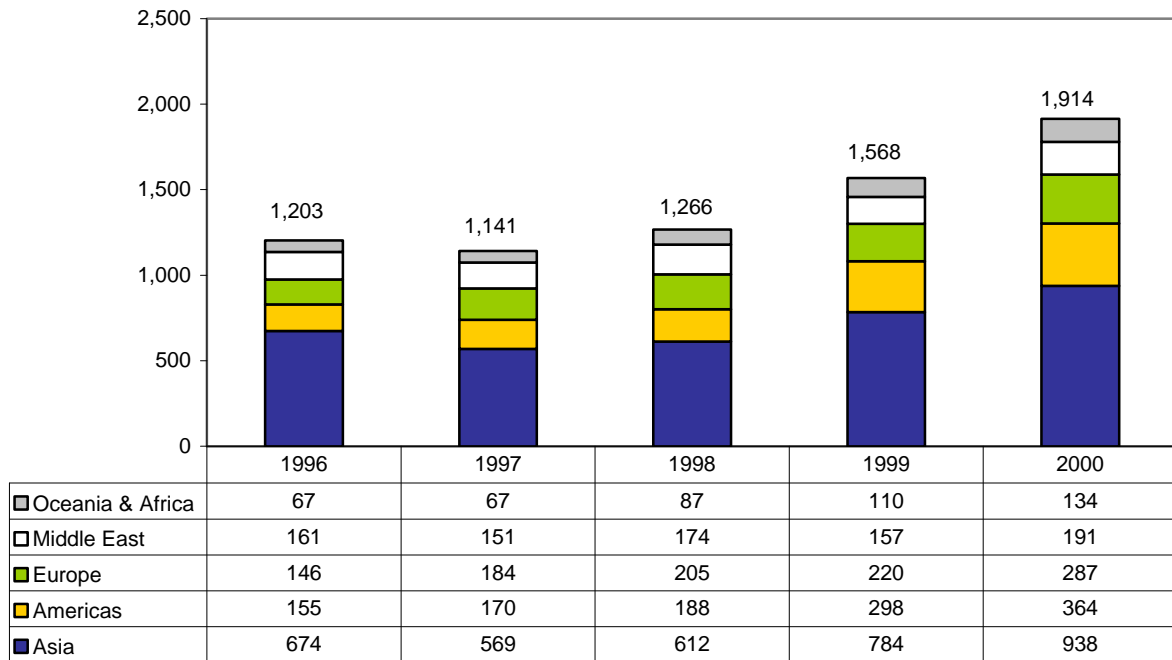


**INTERNATIONAL STUDENTS BY GEOGRAPHIC ORIGIN**  
2000-2001



Note: In 2000-01, the largest percentage of undergraduate international students were from China including Hong Hong (16.3%) followed by the USA (11.9%).  
In 2000-01, the largest percentage of graduate international students were from the USA (22.6%) followed by China including Hong Kong (11.9%).

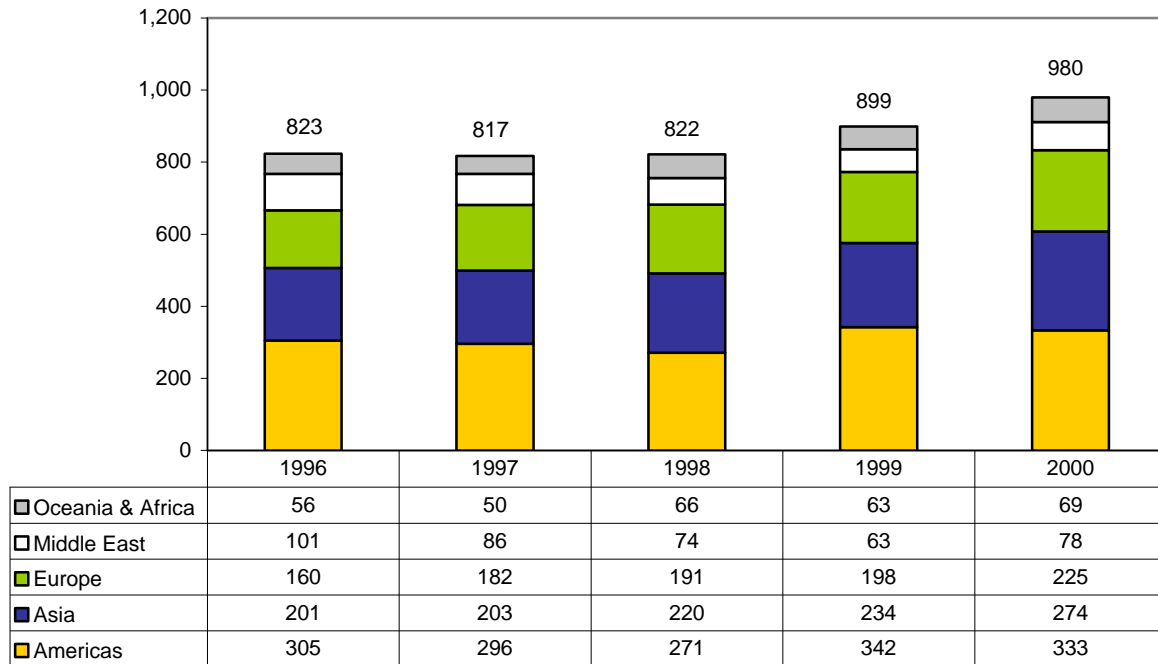
**Undergraduate Students**



In 1996-97, the largest percentage of undergraduate international students were from Hong Kong (28.8%).

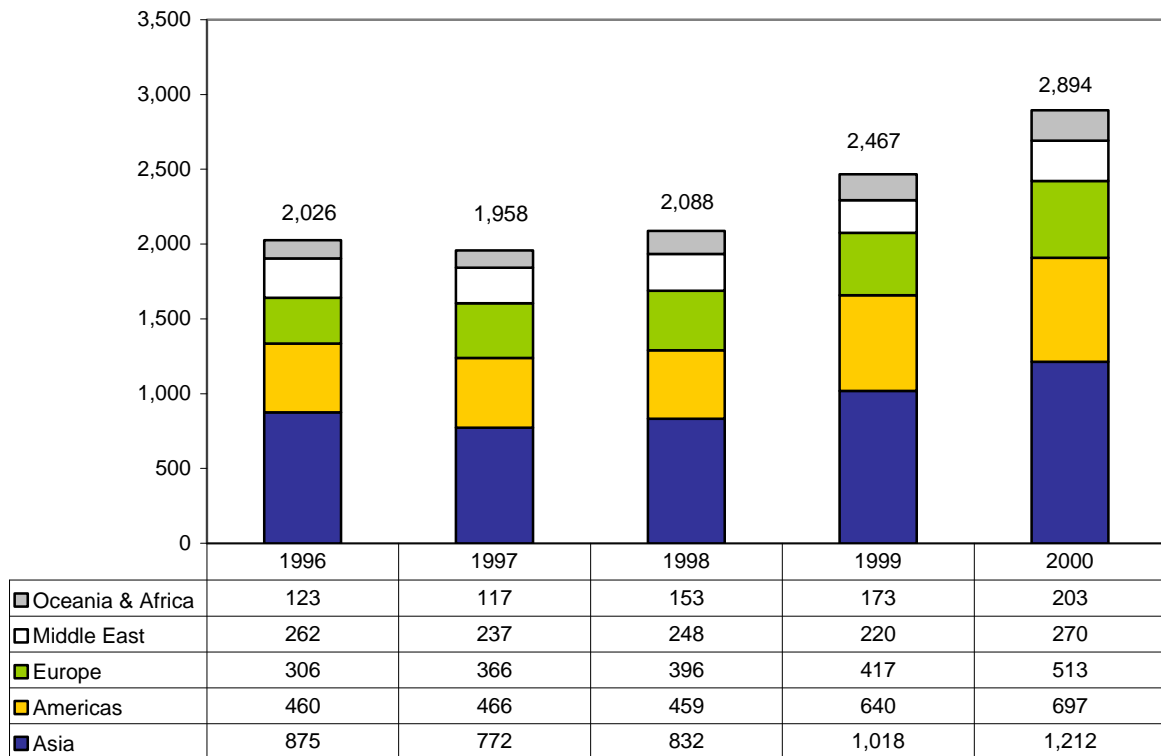
In 2000-01, the largest percentage of undergraduate international students were from China incl. Hong Kong (16.3%) followed by the USA (11.9%).

**Graduate Students**



In 1996-97 the largest percentage of graduate international students (37.9%) were from two countries-- USA (29.4%) and Iran (8.5%). In 2000-0, the largest percentage of graduate international students were from the USA (22.6%) followed by China incl. Hong Kong (11.9%).

**Total International Students**



**TEN YEAR ENROLMENT TRENDS, ALL STUDENTS**

1991-2000

November 1

	TOTAL STUDENTS*				INTERNATIONAL STUDENTS			
	Undergraduate		Graduate		Undergraduate		Graduate	
	Total	% Female	Total	% Female	Total	% Female	Total	% Female
1991	45,749	54.4%	9,974	51.2%	2,445	44.0%	1,398	35.0%
1992	44,371	54.4%	10,246	51.6%	2,294	47.6%	1,389	34.7%
1993	44,116	55.2%	10,262	52.2%	2,044	48.2%	1,265	36.7%
1994	42,352	55.3%	10,078	53.1%	1,622	46.3%	1,111	38.6%
1995	42,395	55.7%	9,881	53.5%	1,332	44.7%	933	36.0%
1996	42,359	56.3%	9,886	53.4%	1,203	43.2%	823	37.8%
1997	42,362	56.8%	9,874	54.1%	1,141	41.3%	817	37.0%
1998	43,139	56.9%	9,658	54.9%	1,266	43.3%	822	39.1%
1999	44,234	56.8%	9,898	54.8%	1,568	44.4%	899	40.6%
2000	44,964	56.8%	10,163	55.4%	1,914	45.7%	980	40.9%

\* Total students includes domestic students and international students.

Note: Excludes students in the Toronto School of Theology.

**GENDER BALANCE OF UNDERGRADUATE AND GRADUATE ENROLMENTS  
BY FIELD OF STUDY**

November 1, 2000

STATISTICS CANADA FIELD OF STUDY	UNDERGRADUATE		GRADUATE	
	Total	% Female	Total	% Female
Biological Sciences	3,543	64%	337	56%
Education & Physical Education	3,354	71%	2,216	76%
Engineering & Applied Sciences	3,919	30%	1,347	24%
Fine & Applied Arts	987	65%	270	66%
General Arts and Science	10,517	58%	0	n/a
Health Professions	4,164	51%	2,006	63%
Humanities	3,903	63%	1,306	57%
Math & Physical Sciences	2,467	35%	691	30%
Social Sciences	10,536	62%	1,990	53%
Not Specified	1,574	61%	0	n/a
<b>Total</b>	<b>44,964</b>	<b>57%</b>	<b>10,163</b>	<b>55%</b>

Notes: Education includes the Faculty of Physical Education and Health and the Ontario Institute for Studies in Education.  
Excludes students in the Toronto School of Theology and Woodsworth Pre-University program.  
Most of the "not specified" group includes first year and special students in Arts and Science.

## UNDERGRADUATE INTAKE BY FACULTY

Fall, 2000

	TOTAL HEADCOUNT					PERCENTAGE OF TOTAL HEADCOUNT				
	GTA Area	Other Ontario	Other Canada	Inter-national	Total	GTA	Other Ontario	Other Canada	Inter-national	Total
<b>Arts &amp; Science</b>										
Mississauga	1,263	156	60	68	1,547	81.6%	10.1%	3.9%	4.4%	100%
Scarborough	1,472	105	24	81	1,682	87.5%	6.2%	1.4%	4.8%	100%
St George	4,120	596	355	406	5,477	75.2%	10.9%	6.5%	7.4%	100%
<b>Total Arts &amp; Science</b>	<b>6,855</b>	<b>857</b>	<b>439</b>	<b>555</b>	<b>8,706</b>	<b>78.7%</b>	<b>9.8%</b>	<b>5.0%</b>	<b>6.4%</b>	<b>100%</b>
Applied Science	767	97	80	87	1,031	74.4%	9.4%	7.8%	8.4%	100%
Dentistry	17	14	4	8	43	39.5%	32.6%	9.3%	18.6%	100%
Law	52	32	48	4	136	38.2%	23.5%	35.3%	2.9%	100%
OISE/UT	752	284	31	2	1,069	70.3%	26.6%	2.9%	0.2%	100%
<b>Medicine</b>										
B Sc (Radiation Science)	41	32	10	1	84	48.8%	38.1%	11.9%	1.2%	100%
Community Health Diploma	1	0	0	1	2	50.0%	0.0%	0.0%	50.0%	100%
MD	49	44	24	0	117	41.9%	37.6%	20.5%	0.0%	100%
Post Grad Medical Education	n.a.	n.a.	n.a.	n.a.	n.a.	n.a.	n.a.	n.a.	n.a.	n.a.
Rehabilitation Medicine	38	30	9	0	77	49.4%	39.0%	11.7%	0.0%	100%
<b>Total, Medicine</b>	<b>129</b>	<b>106</b>	<b>43</b>	<b>2</b>	<b>280</b>	<b>46.1%</b>	<b>37.9%</b>	<b>15.4%</b>	<b>0.7%</b>	<b>100%</b>
Music	69	31	22	14	136	50.7%	22.8%	16.2%	10.3%	100%
Nursing	7	7	4	0	18	38.9%	38.9%	22.2%	0.0%	100%
Pharmacy	22	36	2	1	61	36.1%	59.0%	3.3%	1.6%	100%
Physical Education and Health	80	23	5	0	108	74.1%	21.3%	4.6%	0.0%	100%
<b>Total Undergraduate</b>	<b>8,750</b>	<b>1,487</b>	<b>678</b>	<b>673</b>	<b>11,588</b>	<b>75.5%</b>	<b>12.8%</b>	<b>5.9%</b>	<b>5.8%</b>	<b>100%</b>

Notes: Excludes Transitional Year Program and Woodsworth diploma & certificate programs.

Undergraduate includes Graduate diplomas in Dentistry, Medicine and Music.

Intake data is not available for Post-graduate Medical Education.

## GRADUATE INTAKE BY FACULTY

Fall, 2000

	TOTAL HEADCOUNT					PERCENTAGE OF TOTAL HEADCOUNT				
	GTA Area	Other Ontario	Other Canada	Inter- national	Total	GTA	Other Ontario	Other Canada	Inter- national	Total
Forestry	5	5	3	4	17	29.4%	29.4%	17.6%	23.5%	100%
Information Studies	46	10	6	6	68	67.6%	14.7%	8.8%	8.8%	100%
Management	116	11	15	33	175	66.3%	6.3%	8.6%	18.9%	100%
OISE / UT	162	56	19	23	260	62.3%	21.5%	7.3%	8.8%	100%
School of Graduate Studies										
Div I Humanities	68	50	55	63	236	28.8%	21.2%	23.3%	26.7%	100%
Div II Social Sciences	65	38	42	57	202	32.2%	18.8%	20.8%	28.2%	100%
Div III Physical Sciences	199	37	73	121	430	46.3%	8.6%	17.0%	28.1%	100%
Div IV Life Sciences	218	75	41	35	369	59.1%	20.3%	11.1%	9.5%	100%
Social Work	82	18	17	4	121	67.8%	14.9%	14.0%	3.3%	100%
<b>Total Graduate</b>	<b>961</b>	<b>300</b>	<b>271</b>	<b>346</b>	<b>1,878</b>	<b>51.2%</b>	<b>16.0%</b>	<b>14.4%</b>	<b>18.4%</b>	<b>100%</b>

## TOTAL INTAKE

Fall, 2000

	TOTAL HEADCOUNT					PERCENTAGE OF TOTAL HEADCOUNT				
	GTA Area	Other Ontario	Other Canada	Inter- national	Total	GTA	Other Ontario	Other Canada	Inter- national	Total
Total Undergraduate	8,750	1,487	678	673	11,588	75.5%	12.8%	5.9%	5.8%	100%
Total Graduate	961	300	271	346	1,878	51.2%	16.0%	14.4%	18.4%	100%
<b>Grand Total</b>	<b>9,711</b>	<b>1,787</b>	<b>949</b>	<b>1,019</b>	<b>13,466</b>	<b>72.1%</b>	<b>13.3%</b>	<b>7.0%</b>	<b>7.6%</b>	<b>100%</b>



**UNIVERSITY OF TORONTO DEGREES AWARDED BY GENDER**

*Calendar Year 2000*

STATISTICS CANADA FIELD OF STUDY*	UNDERGRADUATE		MASTERS		DOCTORAL		TOTAL	
	Total	% Female	Total	% Female	Total	% Female	Total	% Female
Humanities	1,387	67%	352	66%	105	51%	1,844	66%
Social Sciences	3,932	67%	1,168	64%	201	67%	5,301	66%
Physical Sciences	1,333	30%	416	26%	116	18%	1,865	27%
Life Sciences	1,593	63%	369	66%	121	45%	2,083	62%
<b>Total</b>	<b>8,245</b>	<b>60%</b>	<b>2,305</b>	<b>57%</b>	<b>543</b>	<b>48%</b>	<b>11,093</b>	<b>59%</b>

\* The category 'Humanities' is the sum of Humanities and Fine & Applied Arts

The category 'Social Sciences' is the sum of Social Sciences and Education & Physical Education

The category 'Physical Sciences' is the sum of Math & Physical Sciences and Engineering & Applied Sciences

The category 'Life Sciences' is the sum of Health Professions and Agricultural & Biological Sciences

Note: Excludes Toronto School of Theology, Certificate and Diploma students.

	<b>DOMESTIC STUDENTS 2001 Entering Cohort 2001-2002</b>	<b>INTERNATIONAL STUDENTS 2001 Entering Cohort 2001-2002</b>
<b>APPLIED SCIENCE &amp; ENGINEERING</b>		
Bachelors	\$5,513	\$13,066
M.Eng.	\$6,110	\$12,530
<b>ARCHITECTURE, LANDSCAPE, AND DESIGN</b>		
M. Arch.	\$5,833	\$12,253
M.L.A.	\$5,833	\$12,253
M.U.D.	\$5,833	\$12,253
<b>ARTS &amp; SCIENCE incl. SCARBOROUGH</b>		
B.A.	\$4,029	\$8,833
B.A. - Computer Science and Communication Culture & Information Technology	\$4,029	\$8,833
B.A. - Commerce/Management	\$4,029	\$8,833
M.Sc.Pl.	\$5,833	\$9,633
M.U.D.S.	\$5,833	\$9,633
Masters of Spatial Analysis - Joint Program with Ryerson		
M.Sc. Biotechnology	\$8,500	\$15,500
<b>DENTISTRY</b>		
D.D.S.	\$14,700	\$27,450
B.Sc. Dent	\$4,868	\$12,219
Graduate Specializations except D.P.H.	\$14,700	\$27,450
M.Sc. Specialty in Dental Public Health	\$6,110	\$12,530
Dental Residents	\$0	(1)

(1) International Students may be admitted to residency Programs as a result of negotiated agreements with Foreign Governments

**TUITION FEE SCHEDULE FOR DOMESTIC AND INTERNATIONAL STUDENTS**

2001-2002 (continued)

	<b>DOMESTIC STUDENTS 2001 Entering Cohort 2001-2002</b>	<b>INTERNATIONAL STUDENTS 2001 Entering Cohort 2001-2002</b>
<b>FORESTRY</b>		
M.F.C.	\$5,566	\$11,986
<b>INFORMATION STUDIES</b>		
M.I.St.	\$5,566	\$11,986
<b>LAW</b>		
J.D.	\$12,000	\$19,192
M.S.L.	\$4,936	\$8,736
<b>MANAGEMENT</b>		
M.B.A.	\$20,000	\$23,000
<b>MEDICINE</b>		
Doctor of Medicine	\$14,700	\$27,450
Postgraduate Medical Trainees	\$0	(1)
Health Science Diplomas	\$6,110	\$12,530
Diploma in Clinical Chemistry	\$6,110	\$12,530
Three Term Occupational Therapy	\$5,922	\$15,477
Physical Therapy	\$4,555	\$11,906
M.Sc. Occupational Therapy and Physical Therapy	\$6,110	\$12,530
Master of Health Science	\$6,110	\$12,530
M.Sc.BMC.	\$6,110	\$12,530
M.Sc.BMC. - Combined program with Sheridan College	\$6,110	\$12,239

(1) International Students may be admitted to residency Programs as a result of negotiated agreements with Foreign Governments.

**TUITION FEE SCHEDULE FOR DOMESTIC AND INTERNATIONAL STUDENTS**

2001-2002 (continued)

	<b>DOMESTIC STUDENTS 2001 Entering Cohort 2001-2002</b>	<b>INTERNATIONAL STUDENTS 2001 Entering Cohort 2001-2002</b>
<b>MUSIC</b>		
Undergraduate	\$4,029	\$8,833
Operatic Performance Diploma	\$5,395	\$9,195
Mus.M. (Performance)	\$5,395	\$9,195
Mus.M. (Other)	\$4,936	\$8,736
Advanced Certificate in Performance	\$5,395	\$9,195
<b>NURSING</b>		
Second Entry	\$5,405	\$11,825
M.N.	\$5,566	\$11,986
<b>OISE/UT</b>		
B.Ed.	\$4,555	\$11,906
Technical & Vocational Certificates	\$4,555	\$11,906
Joint Master of Teaching in Human Devt and Curriculum	\$6,110	\$12,530
M.A. in Child Study	\$6,110	\$12,530
M.A.(T.)	\$6,110	\$12,530
M.Ed.	\$6,110	\$12,530
Ed.D.	\$5,772	\$12,446
<b>PHARMACY</b>		
Bachelors	\$8,925	\$16,117
<b>PHYSICAL EDUCATION AND HEALTH</b>		
B.P.E.H	\$4,029	\$11,833

**TUITION FEE SCHEDULE FOR DOMESTIC AND INTERNATIONAL STUDENTS**

2001-2002 (continued)

	<b>DOMESTIC STUDENTS 2001 Entering Cohort 2001-2002</b>	<b>INTERNATIONAL STUDENTS 2001 Entering Cohort 2001-2002</b>
<b>S.G.S. (annual fee)</b>		
Doctoral Stream	\$4,936	\$8,736
<b>S.G.S. CENTERS AND INSTITUTES</b>		
M.I.R.	\$6,110	\$12,530
M.M.St.	\$6,110	\$12,530
<b>SOCIAL WORK</b>		
M.S.W.	\$5,566	\$11,986
<b>TRANSITIONAL YEAR PROGRAM</b>		
Transitional Year Program	\$3,422	(2)
<b>WOODSWORTH</b>		
Woodsworth Certificates	\$4,029	\$8,833
Diploma in Gerontology	\$6,110	\$12,530

(2) Program is limited to Domestic Students only.

**TUITION FEE SCHEDULE FOR SELF-FUNDED PROGRAMS**

2001-02

Page 44

	<b>2001 ENTERING COHORT 2001-02</b>
Masters of Engineering in Telecommunications	\$25,000.00
Masters of Engineering & Manufacturing Course Fee	\$2,500.00
Certificate Program in Professional and Aviation Management	\$18,000.00
ConGESE (Consortium for Graduate Education in Software Engineering)	\$2,250.00
Summer Program in Medieval Latin	\$650.00
Masters of Mathematical Finance	\$30,000.00
Faculty of Dentistry Qualifying Program	\$31,500.00
Executive Masters of Business Administration	\$31,500.00
Executive Masters of Business Administration (Global Option)	\$30,000.00
Masters of Management and Professional Accounting	
Domestic	\$16,050.00
International	\$18,600.00
MEDICINE	
Sponsored Medical Trainees	\$23,140.00
Visiting MD Student Course Fee	
1-2 weeks	\$210.00
3-4 weeks	\$280.00
* Fee Increase will not be more than 5%	
Visiting MD Student Course Fee (continued)	
5-6 weeks	\$350
7-8 weeks	\$400
B.Sc. in Radiation Sciences - Collaborative University of Toronto and Michener Institute Radiation Sciences Program.	
Domestic UofT Component	\$2,090
International UofT Component	\$7,590
Nurse Practitioner Certificate Course Fee	\$806
Post-Masters Acute Care Nurse Practitioner Program	\$12,500
OISE/UT- Additional Qualifications Course	\$825
Pharm. D.	\$24,150
Diploma in Social Work Research	\$3,010
WOODSWORTH COLLEGE	
Woodsworth Pre-University Program (Math)	\$630
Certificate in Case Management Course Fee	\$577

\* Fee Increase will not be more than 5%

\*\* Fee Increase will not be more than 5% of the corresponding domestic fee

**TUITION FEE SCHEDULE FOR OISE/UT SCHOOLS**  
2001-2002

	<b>2001-02</b>
Laboratory School - Half Day Program	\$3,950.00
Laboratory School - Full Day Program	6,150.00
U T S	8,386.00





# Part E Alumni

Alumni Counts by Region	48
Alumni Donations to the University by Region	49
Overall Fundraising Achievement:	50
Overall Fundraising Achievement: Source of Donations	51
Alumni by College or Faculty Affiliation	52

**ALUMNI COUNTS BY REGION**

2001

	NUMBER OF ALUMNI	PERCENTAGE OF TOTAL
<b>Canada</b>		
Ontario		
Metro Toronto	163,474	45.3%
Central Ontario	91,512	25.4%
Southwestern Ontario	19,660	5.5%
Eastern Ontario	18,640	5.2%
Northern Ontario	7,248	2.0%
Rest of Canada		
British Columbia	9,428	2.6%
Alberta	5,452	1.5%
Quebec	4,345	1.2%
Nova Scotia	2,029	0.6%
Manitoba	1,702	0.5%
Saskatchewan	1,227	0.3%
New Brunswick	931	0.3%
Newfoundland	907	0.3%
Unknown within Canada	555	0.2%
Prince Edward Island	365	0.1%
Northwest Territories	306	0.1%
Yukon Territory	96	-
Nunavut	20	-
<b>Canada Total</b>	<b>327,897</b>	<b>91.0%</b>
<b>United States Total</b>	<b>18,277</b>	<b>5.1%</b>
<b>International Total</b>	<b>13,559</b>	<b>3.8%</b>
<b>Unknown</b>	<b>747</b>	<b>0.2%</b>
<b>Grand Total</b>	<b>360,480</b>	<b>100.0%</b>

## Notes:

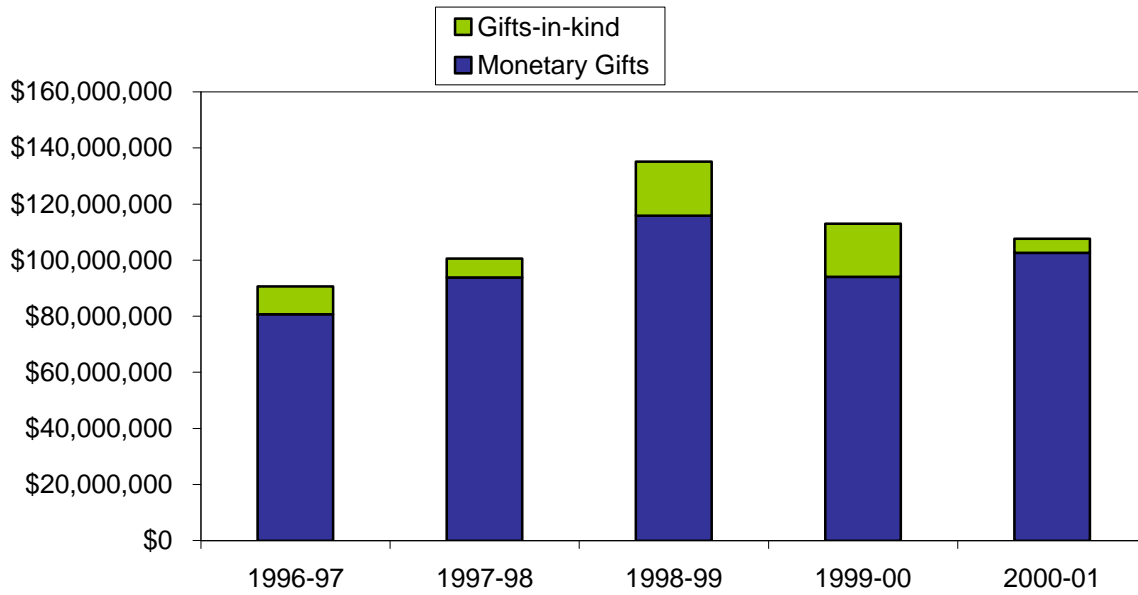
Regional breakdown is based on data as at October 31, 2001.

**ALUMNI DONATIONS TO THE UNIVERSITY BY REGION**  
2000-2001

<b>TOTAL GIFTS FROM ALUMNI</b>		
	<b>Value</b>	<b>Percentage of Total</b>
<b>Canada</b>		
Ontario		
Metro Toronto	\$44,333,962	83.9%
Central Ontario	\$3,428,667	6.5%
Eastern Ontario	\$737,020	1.4%
Southwestern Ontario	\$571,746	1.1%
Northern Ontario	\$125,392	0.2%
<b>Total Ontario</b>	<b>\$49,196,787</b>	<b>93.1%</b>
Rest of Canada		
British Columbia	\$315,706	0.6%
Quebec	\$143,841	0.3%
Alberta	\$97,728	0.2%
Nova Scotia	\$14,714	-
Saskatchewan	\$11,655	-
Manitoba	\$10,731	-
Newfoundland	\$9,525	-
Prince Edward Island	\$7,385	-
New Brunswick	\$5,080	-
Northwest Territories	\$1,685	-
Yukon Territory	\$1,030	-
Nunavut	\$130	-
<b>Total Rest of Canada</b>	<b>\$619,210</b>	<b>1.2%</b>
<b>Canada Total</b>	<b>\$49,815,997</b>	<b>94.3%</b>
<b>United States Total</b>	<b>\$1,925,855</b>	<b>3.6%</b>
<b>International Total</b>	<b>\$1,077,239</b>	<b>2.0%</b>
<b>Grand Total</b>	<b>\$52,819,092</b>	<b>100.0%</b>

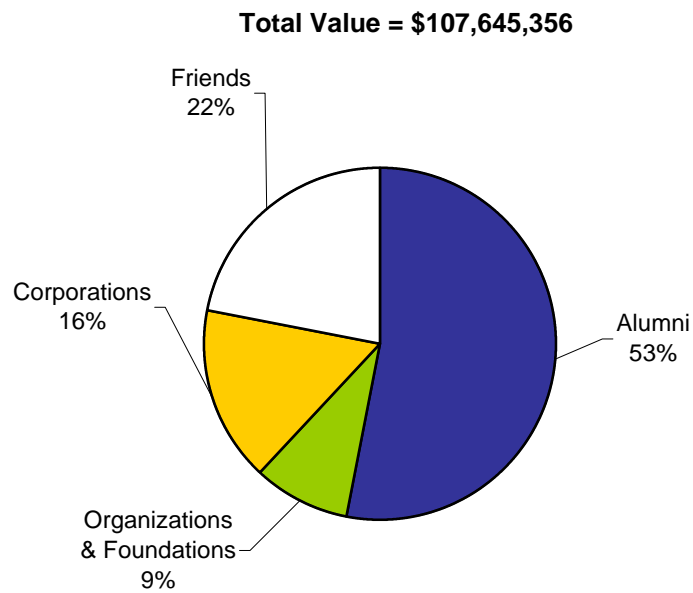
Notes: Donations are based on payments only received between May 1, 2000 and April 30, 2001.  
Does not include payments processed by the University of Trinity College.

**OVERALL FUNDRAISING ACHIEVEMENT**  
1996-1997 to 2000-2001



Notes: Monetary gifts are based on actual payments received.  
The above donations include those received by the University of Toronto and those received by the University of St. Michael's College, University of Trinity College and Victoria University.

**OVERALL FUNDRAISING ACHIEVEMENT**  
**SOURCE OF DONATIONS**  
*May 1, 2000 - April 30, 2001*



Note: Figures are based on payments received by the University of Toronto, the University of St. Michael's College, University of Trinity College and Victoria University.

**ALUMNI BY COLLEGE OR FACULTY AFFILIATION**

2001

Page 52

	NUMBER OF ALUMNI	PERCENTAGE OF TOTAL
<b>Arts &amp; Science Programs</b>		
Constituent Colleges	68,745	18.6%
Federated Colleges	68,089	18.4%
Mississauga, University of Toronto at	25,351	6.9%
Scarborough, University of Toronto at	23,555	6.4%
<b>Total Arts &amp; Science Programs</b>	<b>185,740</b>	<b>50.3%</b>
Applied Science & Engineering	35,922	9.7%
Architecture, Landscape & Design	2,847	0.8%
Dentistry	8,375	2.3%
Forestry	2,416	0.7%
Graduate Studies/Graduate Institutes & Centres	80,818	21.9%
Information Studies	5,239	1.4%
Joseph L. Rotman School of Management	7,970	2.2%
Law	6,436	1.7%
Medicine, Doctor of	12,492	3.4%
Other Medicine	8,585	2.3%
Music	3,937	1.1%
Nursing	8,457	2.3%
OISE/UT		
Undergraduate	40,373	10.9%
Graduate	19,974	5.4%
Institute of Child Study	2,016	0.5%
Pharmacy	8,221	2.2%
Physical & Occupational Therapy	5,884	1.6%
Physical Education & Health	4,184	1.1%
Social Work	6,142	1.7%
Woodsworth Certificate & Diploma	5,204	1.4%
<b>Total</b>	<b>369,234</b>	<b>100.0%</b>

**Notes:**

A recent upgrade of data to reflect more accurate alumni info may result in some anomalies from previously reported data.

Alumni with multiple degrees are counted once each time they occur in a constituency.

A single degree may be counted in more than one constituency.

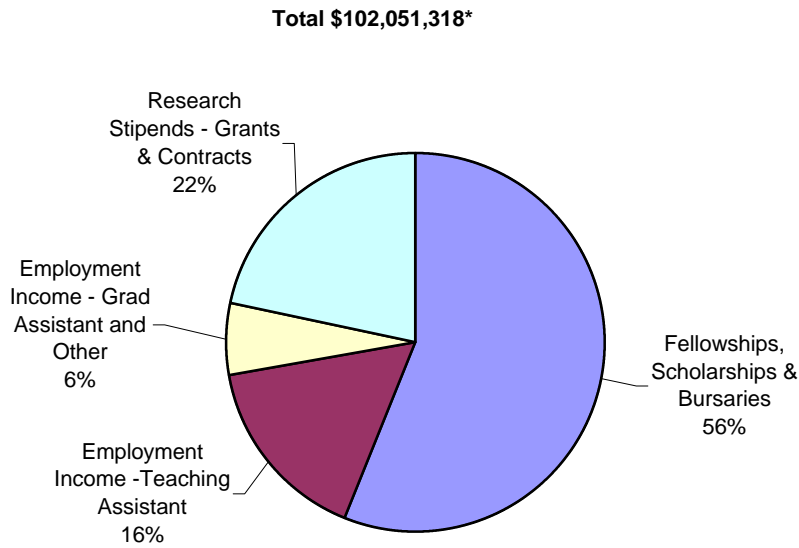
Does not include Toronto School of Theology or conjoined degrees.

All honorary degrees are excluded.

# Part F Student Awards

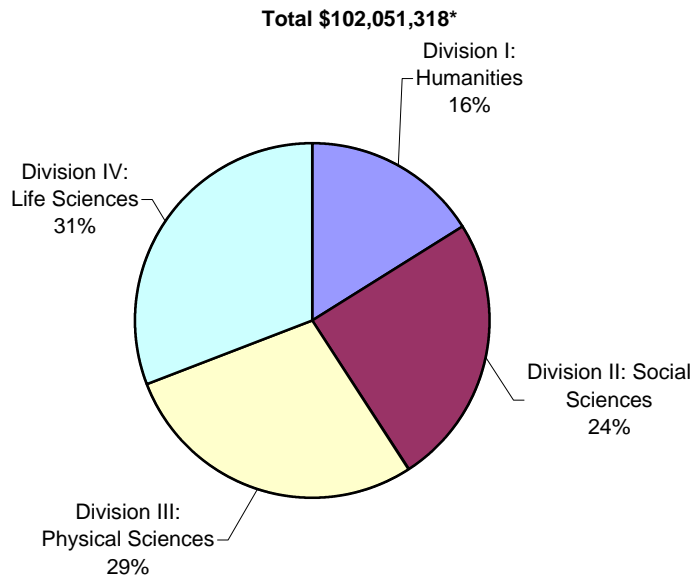
Graduate Student Support by S.G.S. Division	54
Graduate Student Support by S.G.S. Division	54
Undergraduate Student Support : Admission Scholarships, In-Course Scholarships and Bursaries by Faculty and College	55
OSAP and University of Toronto Advanced Planning for Students program (UTAPS) by Faculty and College	56

**GRADUATE STUDENT SUPPORT BY SOURCE**  
2000-2001



\*Does not include updated information on research stipends from affiliated teaching hospitals.

**GRADUATE STUDENT SUPPORT BY SCHOOL OF GRADUATE STUDIES DIVISION**  
2000-2001



\*Does not include updated information on research stipends from affiliated teaching hospitals.



**UNDERGRADUATE STUDENT SUPPORT:  
ADMISSION SCHOLARSHIPS, IN-COURSE SCHOLARSHIPS AND BURSARIES  
2000-2001**

FACULTY / COLLEGE	ADMISSION SCHOLARSHIPS		IN-COURSE SCHOLARSHIPS		BURSARIES	
	Number	Value	Number	Value	Number	Value
Applied Science and Engineering	314	\$902,936	201	\$444,699	1,542	\$2,737,861
Architecture, Landscape, and Design	0	0	17	23,239	63	99,882
Arts & Science	0	0	0	0	1	821
Dentistry	3	3,026	103	67,615	251	866,374
Innis College	37	102,500	139	150,663	320	387,522
Law	19	86,567	32	41,102	370	946,376
Medicine	5	7,376	306	174,405	636	1,277,506
Mississauga, University of Toronto at	250	269,857	144	120,480	828	875,100
Music	25	51,674	119	163,607	162	315,992
New College	67	135,690	63	63,908	672	974,001
Nursing	3	7,006	20	27,767	88	166,432
Occupational Therapy	0	0	2	300	56	154,400
OISE/UT Undergraduate	8	27,367	19	30,276	317	866,632
Pharmacy	19	23,337	77	54,300	479	1,086,286
Physical Education and Health	8	16,000	32	18,390	85	103,317
Physical Therapy	0	0	7	1,270	103	191,414
Radiation Sciences	0	0	0	0	62	124,483
Scarborough, University of Toronto at	401	1,049,443	242	220,590	1,131	1,498,296
St. Michael's College	54	118,448	104	119,857	535	823,414
Transitional Year Program	0	0	17	4,400	134	429,238
Trinity College	111	231,200	321	374,317	254	415,333
University College	211	388,500	669	639,318	737	1,100,829
Victoria College	183	446,448	377	629,683	511	748,520
Woodsworth College	55	39,600	134	91,488	1,154	1,755,679
<b>Total</b>	<b>1,773</b>	<b>\$3,906,975</b>	<b>3,145</b>	<b>\$3,461,674</b>	<b>10,491</b>	<b>\$17,945,710</b>

**OSAP AND UTAPS BY FACULTY AND COLLEGE**  
2000-2001

FACULTY / COLLEGE	OSAP APPLICANTS AS A PERCENTAGE OF FULL-TIME ENROLMENT		OSAP		UTAPS	
			Number	Value	Number	Value
Applied Science and Engineering	40%		1,104	\$6,782,055	1,030	\$1,751,318
Architecture, Landscape, and Design	41%		53	432,089	20	47,100
Dentistry	70%		190	1,863,730	186	722,785
Innis College	40%		346	2,553,320	112	169,800
Law	42%		195	1,484,761	0	0
Management	33%		89	627,175	0	0
Medicine	59%		376	3,826,435	355	966,333
Mississauga, University of Toronto at	46%		1,674	11,075,585	357	499,900
Music	33%		128	943,811	50	126,868
New College	49%		1,059	7,575,863	241	445,000
Nursing	43%		31	305,351	2	3,200
Occupational Therapy	58%		63	631,683	28	106,900
OISE/UT Graduate	25%		242	2,741,629	145	502,700
OISE/UT Undergraduate	42%		399	3,766,569	155	438,300
Pharmacy	55%		249	1,735,232	228	499,250

**OSAP AND UTAPS BY FACULTY AND COLLEGE** (continued)  
2000-2001

FACULTY / COLLEGE	OSAP APPLICANTS AS A PERCENTAGE OF FULL-TIME ENROLMENT		OSAP		UTAPS	
			Number	Value	Number	Value
Physical Education and Health	38%		116	\$719,759	20	\$30,800
Physical Therapy	51%		90	817,132	52	112,300
Radiation Sciences	62%		115	1,039,113	59	118,496
Scarborough, University of Toronto at	55%		1,966	13,269,623	492	575,400
School of Graduate Studies	15%		741	6,828,736	539	1,240,390
St. Michael's College	36%		863	5,610,799	158	249,200
Transitional Year Program	87%		48	518,453	30	75,745
Trinity College	30%		286	1,981,204	94	132,700
University College	38%		951	6,561,111	268	348,194
Victoria College	39%		916	6,275,582	203	328,800
Woodsworth College	77%		1,002	8,636,719	295	573,333
<b>Total</b>	40%		13,292	\$98,603,519	5,119	\$10,064,812

Notes: UTAPS for School of Graduate Studies are also included in the totals shown in Graduate Student Support by Graduate Studies Division  
 UTAPS at Law and Management is distributed as part of their grants programs and are not included above.  
 UTAPS data in this table refer to grants awarded to OSAP recipients only.



# Part G

## Faculty and Administrative Staff

Distribution of Full-Time Appointed Tenured/Tenure Stream Faculty by Major Division and Main Appointment	60
Distribution of Full-Time Tenured/Tenure Stream Faculty by Rank and Gender	61
Age Distribution of Tenured/Tenure Stream Faculty	61
Academic Staff and Librarians: Distribution of Full and Part Time ( $\geq 25\%$ ) by Rank and Gender	62
Distribution of Full Time and Part Time Administrative and Union Staff	64
Operating Fund Full-Time Equivalent Staff	65

**DISTRIBUTION OF FULL-TIME APPOINTED TENURED/TENURE  
STREAM FACULTY BY MAJOR DIVISION AND MAIN APPOINTMENT**

All Sources of Funding  
2000-2001

DIVISION	%			TOTAL
	MALE	FEMALE	FEMALE	
Applied Science and Engineering	166	11	6.2%	177
Architecture, Landscape, and Design	9	0	0.0%	9
Arts and Science*	486	135	21.7%	621
Dentistry	36	6	14.3%	42
Education (OISE/UT)	76	79	51.0%	155
Forestry	10	1	9.1%	11
Information Studies	4	9	69.2%	13
Law	30	16	34.8%	46
Management	44	8	15.4%	52
Medicine	138	57	29.2%	195
Mississauga, University of Toronto at	110	39	26.2%	149
Music	21	7	25.0%	28
Nursing	0	17	100.0%	17
Pharmacy	14	5	26.3%	19
Physical Education and Health	9	4	30.8%	13
Scarborough, University of Toronto at	100	36	26.5%	136
School of Graduate Studies	33	10	23.3%	43
Social Work	7	9	56.3%	16
Other**	1	4	80.0%	5
<b>Total</b>	<b>1,294</b>	<b>453</b>	<b>25.9%</b>	<b>1,747</b>

\* Includes University College, Innis College, New College, Woodsworth College, Trinity, Victoria, St. Michael's College.

\*\* Includes Office of the President and Vice-President and Provost.

**DISTRIBUTION OF FULL-TIME TENURED/TENURE STREAM FACULTY  
BY RANK AND GENDER**

Page 61

All Sources of Funding  
2000-2001

<b>RANK</b>	<b>MALE</b>	<b>FEMALE</b>	<b>% FEMALE</b>	<b>TOTAL</b>
Professor	763	140	15.5%	903
Associate Professor	339	195	36.5%	534
Assistant Professor	183	114	38.4%	297
Assistant Professor (conditional)	9	4	30.8%	13
<b>Total</b>	<b>1,294</b>	<b>453</b>	<b>25.9%</b>	<b>1,747</b>

Note: Includes Faculties of Medicine and Dentistry.

**AGE DISTRIBUTION OF TENURED/TENURE STREAM FACULTY**

2000-2001

<b>RANK</b>	<b>AVERAGE AGE</b>
Professor	54.5
Associate Professor	48.2
Assistant Professor	36.5
Assistant Professor (conditional)	35.4

Note: Total number of Faculty = 1,747.

**ACADEMIC STAFF AND LIBRARIANS  
DISTRIBUTION OF FULL AND PART-TIME (>=25%)  
BY RANK AND GENDER**

All Sources of Funding  
2000-2001

RANK	FULL-TIME			Total
	Male	Female	%	
Professor	889	159	15.2%	1,048
Associate Professor	475	235	33.1%	710
Assistant Professor	322	202	38.5%	524
Assistant Professor (cond)	22	27	55.1%	49
Lecturer (medical)	4	7	63.6%	11
Instructor	21	29	58.0%	50
Senior Lecturer/Lecturer	44	53	54.6%	97
Senior Tutor/Tutor	34	47	58.0%	81
<b>Sub-Total</b>	<b>1,811</b>	<b>759</b>	<b>29.5%</b>	<b>2,570</b>
Librarian	36	93	72.1%	129
<b>Total</b>	<b>1,847</b>	<b>852</b>	<b>31.6%</b>	<b>2,699</b>

RANK	PART-TIME			Total
	Male	Female	%	
Professor	35	8	18.6%	43
Associate Professor	53	10	15.9%	63
Assistant Professor	53	46	46.5%	99
Assistant Professor (cond)	8	7	46.7%	15
Lecturer (medical)	2	0	0.0%	2
Instructor	8	13	61.9%	21
Senior Lecturer/Lecturer	2	0	0.0%	2
Senior Tutor/Tutor	11	12	52.2%	23
<b>Sub-Total</b>	<b>172</b>	<b>96</b>	<b>35.8%</b>	<b>268</b>
Librarian	2	18	90.0%	20
<b>Total</b>	<b>174</b>	<b>114</b>	<b>39.6%</b>	<b>288</b>



**ACADEMIC STAFF AND LIBRARIANS  
DISTRIBUTION OF FULL AND PART-TIME (>=25%)  
BY RANK AND GENDER Continued**

All Sources of Funding  
2000-2001

RANK	TOTAL			Total
	Male	Female	%	
Professor	924	167	15.3%	1,091
Associate Professor	528	245	31.7%	773
Assistant Professor	375	248	39.8%	623
Assistant Professor (cond)	30	34	53.1%	64
Lecturer (medical)	6	7	53.8%	13
Instructor	29	42	59.2%	71
Senior Lecturer/Lecturer	46	53	53.5%	99
Senior Tutor/Tutor	45	59	56.7%	104
<b>Sub-Total</b>	<b>1,983</b>	<b>855</b>	<b>30.1%</b>	<b>2,838</b>
Librarian	38	111	74.5%	149
<b>Total</b>	<b>2,021</b>	<b>966</b>	<b>32.3%</b>	<b>2,987</b>

Notes: Includes Faculty of Medicine and Dentistry.

Includes both tenured/tenure stream and non-tenure stream professorial staff.

**DISTRIBUTION OF FULL-TIME AND PART-TIME ADMINISTRATIVE AND UNION STAFF**

September 2000

EMPLOYEE GROUP	FULL-TIME			PART-TIME			ALL		
	Male	Female	Total	Male	Female	Total	Male	Female	Total
<b>Non-Unionized Employees</b>									
Senior Management Group*	50	57	107	0	1	1	50	58	108
USWA-exempt Admin staff*	200	327	527	3	21	24	203	348	551
<b>Total non-unionized employees</b>	<b>250</b>	<b>384</b>	<b>634</b>	<b>3</b>	<b>22</b>	<b>25</b>	<b>253</b>	<b>406</b>	<b>659</b>
<b>Unionized Employees</b>									
Library	58	141	199	7	18	25	65	159	224
Operating Engineers	67	0	67	0	0	0	67	0	67
Police	30	10	40	0	0	0	30	10	40
Service Workers	276	197	473	11	4	15	287	201	488
Teaching Assistants**	0	0	0	1,473	1,177	2,650	1,473	1,177	2,650
Trades and Services***	61	1	62	0	0	0	61	1	62
USWA Admin staff*	735	1675	2,410	35	231	266	770	1906	2,676
<b>Total unionized employees</b>	<b>1,227</b>	<b>2,024</b>	<b>3,251</b>	<b>1,526</b>	<b>1,430</b>	<b>2,956</b>	<b>2,753</b>	<b>3,454</b>	<b>6,207</b>
<b>Total</b>	<b>1,477</b>	<b>2,408</b>	<b>3,885</b>	<b>1,529</b>	<b>1,452</b>	<b>2,981</b>	<b>3,006</b>	<b>3,860</b>	<b>6,866</b>

\* Excludes Non University of Toronto Departments.

\*\* Includes 183 OISE Graduate Assistants

\*\*\* Trades and Services includes Machinists, Carpenters, Electrical Workers, Sheet Metal Workers, Plumbers, Pipefitters, and Painters.

**OPERATING FUND FULL-TIME EQUIVALENT STAFF**

2001-02

<b>DIVISION</b>	<b>ACADEMIC</b>	<b>ADMINISTRATIVE</b>
Applied Science and Engineering	201.77	190.10
Architecture, Landscape, and Design	24.64	20.68
Arts & Science	795.09	421.41
Colleges	15.35	93.65
Dentistry	81.52	141.63
Forestry	15.06	6.50
Graduate Centres and Institutes	24.18	30.60
Information Studies	15.00	15.30
Law	45.04	46.90
Management	62.13	80.60
Medicine	818.68	364.56
Mississauga, University of Toronto at	187.09	69.97
Music	49.28	29.87
Nursing	30.60	13.58
OISE/UT	239.40	187.64
Pharmacy	32.02	22.30
Physical Education and Health	15.24	7.49
Scarborough, University of Toronto at	178.89	62.30
School of Continuing Studies	0.00	40.12
School of Graduate Studies	4.40	40.80
Social Work	18.98	20.60
Transitional Year Program	8.75	2.50
<b>Subtotal</b>	<b>2,863.11</b>	<b>1,909.10</b>
Academic Services	1.00	542.37
Campus and Student Services	14.10	216.23
Central Administration	16.76	678.68
Facilities and Services	0.00	672.66
Other Academic Costs	0.50	1.00
<b>Grand Total</b>	<b>2,895.47</b>	<b>4,020.04</b>

**Notes:**

Union staff are included in the Administrative group.

Arts and Science includes Innis, New, St. Michael's, University College Programs.

Colleges include Innis, Munk Centre, New, University, Woodsworth



# Part H Library

Library Collections	68
Number of Loans	69
Number of Computers in the Library	69
Digital Library E-Resources	69
Number of Electronic Articles Downloaded	70

## LIBRARY COLLECTIONS

2000-2001

There are 31 libraries in the University of Toronto Library System.

COLLECTIONS *	CENTRAL LIBRARIES	LOCAL LIBRARIES	SCARBOROUGH/ MISSISSAUGA	FEDERATED/ AFFILIATED	DIGITAL LIBRARY**	TOTAL
Books	6,578,560	1,931,995	582,561	1,206,918	6,587	10,306,621
Cartographic Materials	238,265	8	40,426	27		278,726
CD-ROM (Bibliog & Text)	1,502	279	183	190		2,154
Computer Data Files	2,168	282	0	0		2,450
Films & Videos	19,248	1,211	310	652		21,421
Graphic Materials	185,984	304,278	61,540	70,851		622,653
Microforms	4,590,542	297,443	25,137	120,357		5,033,479
Music Scores	0	53,940	0	0		53,940
Sound Recording	9,753	169,320	3,824	3,250		186,147
Other Formats	29,117	7,812	1,162	446		38,537
<b>Total</b>						<b>16,546,128</b>
Current Serials	26,382	6,640	3,481	3,001	14,043	53,547
Manuscripts (Metres)	9,958	23	0	13		9,994

\* Materials on transfer from Central to Local Libraries (previously included in Central Libraries' counts) are shown in the counts for Local Libraries where they are located. Bound volumes of subscriptions are included in the Book counts.

\*\* Electronic resources (Books & journals).

## NUMBER OF LOANS

2000-2001

Page 69

Central Libraries*	
Robarts Library	1,975,087
Gerstein Science Information Centre	955,967
OISE/UT Library	259,258
Fisher Library/Archives	24,399
Audio Visual Library	61,170
Branch Libraries	253,053
<b>Sub-Total</b>	<b>3,528,934</b>
Local Libraries	
UTMississauga Library	233,098
UTScarborough Library	78,722
Federated/Affiliated Libraries	288,988
<b>Total</b>	<b>4,725,345</b>

\* Faculty/Staff & Grad Students loan periods changed in 2000-2001.

\*\* Victoria University Library was closed for renovations.

## NUMBER OF COMPUTERS IN THE LIBRARY

April 30, 2001

Computers in the Network	1,649
Stand-Alone PC's	94
Terminals	108

## DIGITAL LIBRARY E-RESOURCES

April 30, 2001

	LICENSED*	PUBLIC**	TOTAL
Journals Indexes and Abstracts	396	35	431
Journals	11,502	1,904	13,406
Reference Sources	173	56	229
Books	6,332	26	6,358
Newspapers and News Services	192	14	206
<b>Total</b>	<b>18,595</b>	<b>2,035</b>	<b>20,630</b>

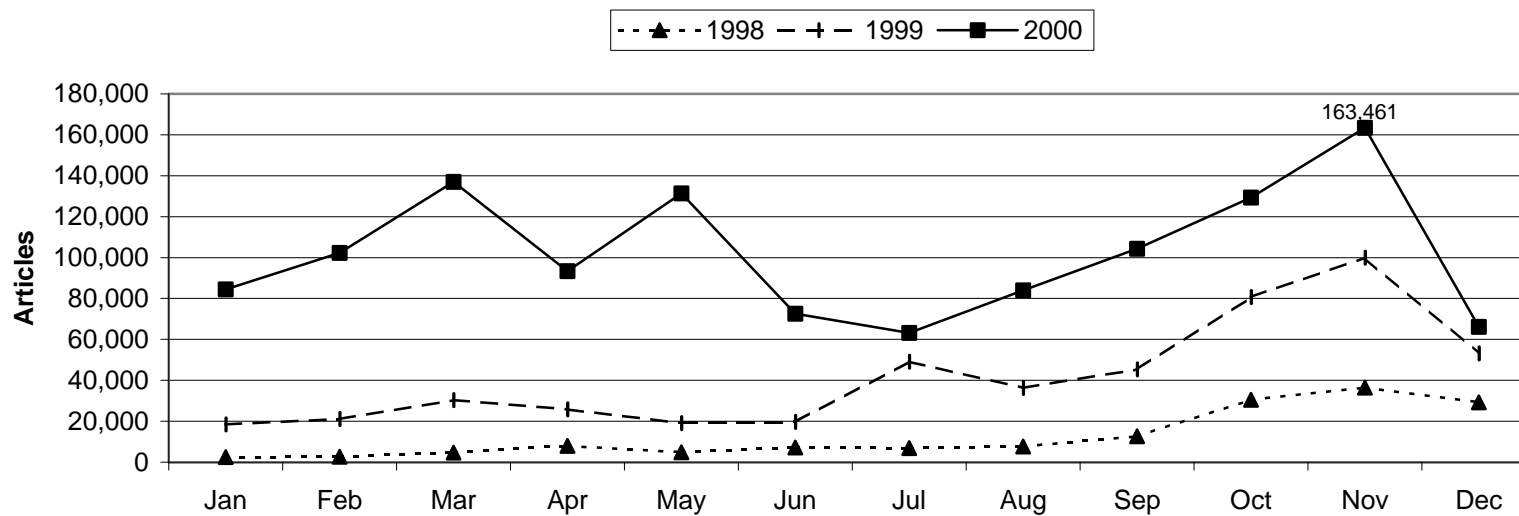
\* These items have been licensed for use by the University of Toronto.

\*\* These items are available on the Internet for use by anyone.

For current figures, see <http://eir.library.utoronto.ca/eir/summary.htm>

## NUMBER OF ELECTRONIC ARTICLES DOWNLOADED

1998-2000



### Notes:

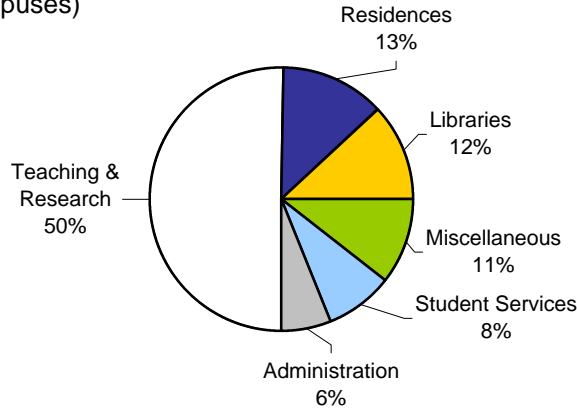
1. The original data for 1999 included articles downloaded from the Encyclopedia Britannica. This data is no longer available and had been removed from the 1999 data.
2. The data for 1999/2000 now includes journal articles downloaded from the ProQuest system. This data was not previously available.
3. The data for 2000 includes the following publishers, aggregators and systems: Academic Press, Beilstein, Cell Press, Elsevier Science, Harrison's Online, JSTOR, LION, MCB Press, Project MUSE, ProQuest, Publications of the National Academy of Sciences, Science, SIAM, Wiley



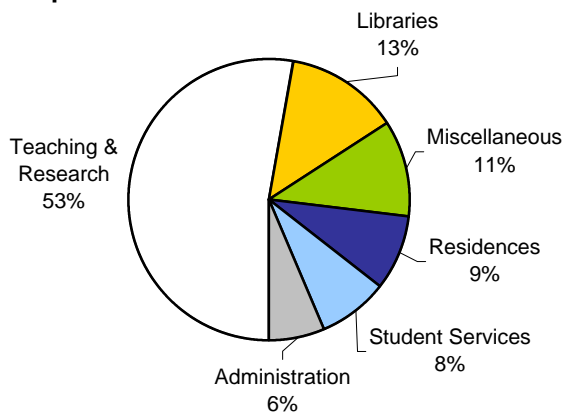
# Part I Physical Plant

Usage of Assignable Space	72
Physical Facts :	
a) Area of U of T Properties	74
b) Number of Parking Spaces	74
c) Number of Buildings and Gross Square Metres	75
d) Public Assembly Facilities	76
e) Number of Places in Student Residences	76

**University of Toronto**  
(All Campuses)

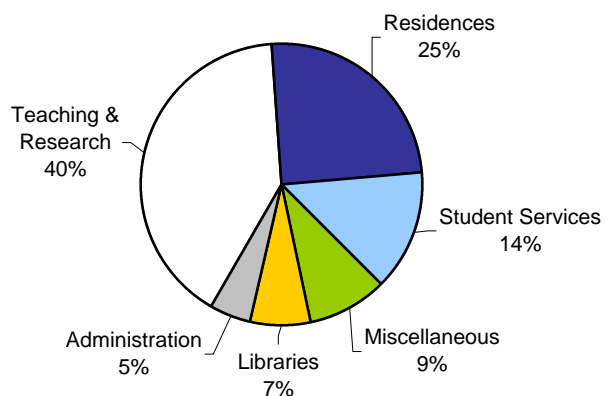


**St. George Campus**

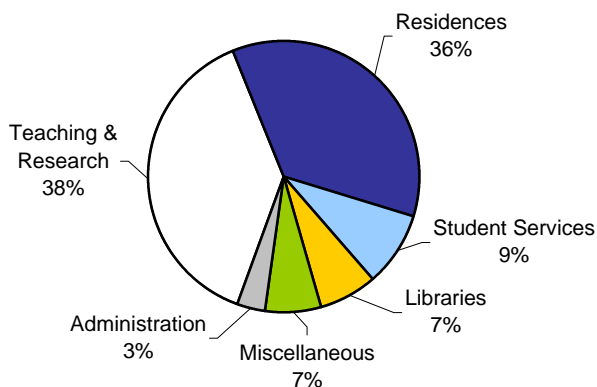


Note: Student Services includes: Athletics, Food Services, Bookstore and Merchandising and Health Services.  
Miscellaneous includes: Plant Maintenance, Assembly & Exhibition Facilities, Common Use and Student Activity and Other University Facilities.

**Scarborough Campus**



**Mississauga Campus**



Note: Teaching and Research includes: Classrooms, Teaching and Research Laboratories, Academic Services, Health Science Clinic Facilities, Central Services and Media Services.

**PHYSICAL FACTS**

2000-2001

**AREA OF U OF T PROPERTIES**

	<b>HECTARES</b>
<b>CAMPUSES</b>	
Downtown Campus	
St. George	49.6
Federated Colleges and Massey	17.3
<b>Total Downtown Campus</b>	<b>66.9</b>
<b>Scarborough</b>	<b>121.5</b>
<b>Mississauga</b>	<b>90.2</b>
<b>Total Campuses</b>	<b>278.6</b>
<b>OFF CAMPUS</b>	
David Dunlap Observatory	76.9
Aerospace	11.9
Joker's Hill	346.0
<b>Total Off Campus</b>	<b>434.8</b>
<b>Grand Total</b>	<b>713.4</b>

Note: Excludes Glendon and Huron/Sussex.  
Total Downtown Campus includes St. George,  
Federated Colleges and Massey.

**NUMBER OF PARKING SPACES**

2000-2001

	<b>NUMBER OF SPACES</b>
St. George	2,400
Scarborough	2,000
Mississauga	2,350
<b>Total</b>	<b>6,750</b>

**NUMBER OF BUILDINGS AND GROSS SQUARE METRES**

2000-2001

<b>BUILDING GROSS SQUARE METRES</b>	<b>NUMBER OF BUILDINGS</b>	<b>NET ASSIGNABLE SQUARE METRES</b>	<b>NET SQUARE METRES</b>	<b>GROSS SQUARE METRES</b>
<b>University</b>				
St. George	114	498,831	794,369	928,556
Leased St. George	10	4,945	6,420	7,382
Scarborough	29	43,790	66,546	76,823
Mississauga	44	62,415	92,910	106,311
<b>Total University</b>	<b>197</b>	<b>609,981</b>	<b>960,245</b>	<b>1,119,072</b>
<b>Federated Colleges and Massey</b>	<b>51</b>	<b>96,034</b>	<b>143,520</b>	<b>181,224</b>
<b>Grand Total</b>	<b>248</b>	<b>706,015</b>	<b>1,103,765</b>	<b>1,300,296</b>

\* In 2000-2001 the University backbone serviced 158 U of T buildings. There were 264 Backbone connections.

Note: **Net Assignable Square Metres** is the sum of all areas on all floors of the building assigned to, or available for assignment to, an occupant, including every type of space functionality used by an occupant.  
**Net Square Metres** is the sum of all areas on all floors of the building, both assigned (see definition above) and non-assigned (ie corridors, stairs, mechanical rooms etc.).  
**Gross Area Square Metres** is the sum of all floors areas included within the outside faces of exterior walls, which have floor surfaces.

## NUMBER OF PUBLIC ASSEMBLY FACILITIES

2000-2001

	NUMBER OF FACILITIES	SEATING CAPACITY
St. George Lecture Theatres / Hall*	42	9,905
St. George Auditorium	4	3,400
Dining Rooms and Cafeterias*	32	4,325
Varsity Stadium	1	21,739
Varsity Arena	1	4,200

\* Including Federated Colleges.

## NUMBER OF UNIVERSITY OF TORONTO STUDENTS IN RESIDENCE

2000-2001

	NUMBER OF FIRST-YEAR STUDENTS	NUMBER OF STUDENTS	TOTAL SPACES
<b>University of Toronto Residences</b>			
<b>St. George Including Federated Universities</b>			
321 Bloor - Woodsworth College	269	289	289
Charles Street Apartments***	12	893	710
Graduate House	0	435	435
Innis College	197	331	331
New College	372	663	663
St. Michael's College	115	533	548
Trinity College	203	432	432
University College (Incl. Luker House)	249	533	537
Victoria University	412	783	786
<b>Total St. George</b>	<b>1,829</b>	<b>4,892</b>	<b>4,731</b>
<b>University of Toronto at Mississauga</b>			
Graduate & Family Housing***	2	266	320
Undergraduate Housing	257	614	614
<b>Total U of T at Mississauga</b>	<b>259</b>	<b>880</b>	<b>934</b>
<b>University of Toronto at Scarborough</b>	<b>243</b>	<b>534</b>	<b>534</b>
<b>Total University of Toronto residences</b>	<b>2,331</b>	<b>6,306</b>	<b>6,199</b>
<b>Independent Campus Residences</b>			
Campus Co-Op	0	208	298
Knox College	3	95	100
Massey College	0	61	61
Neil-Wycik Co-Operative*	0	30	749
St. Vladimir Institute	7	29	46
Tartu **	56	287	350
Wycliffe College	0	67	70
<b>Total Independent Residences</b>	<b>66</b>	<b>777</b>	<b>1,674</b>
<b>Grand Total</b>	<b>2,397</b>	<b>7,083</b>	<b>7,873</b>

\* Premises house mainly Ryerson students.

\*\* Non-students are permitted to occupy spaces.

\*\*\* Premises house students and their family. Some families may include 2 students.

Notes: As of the beginning of the academic year.  
Includes TST students.

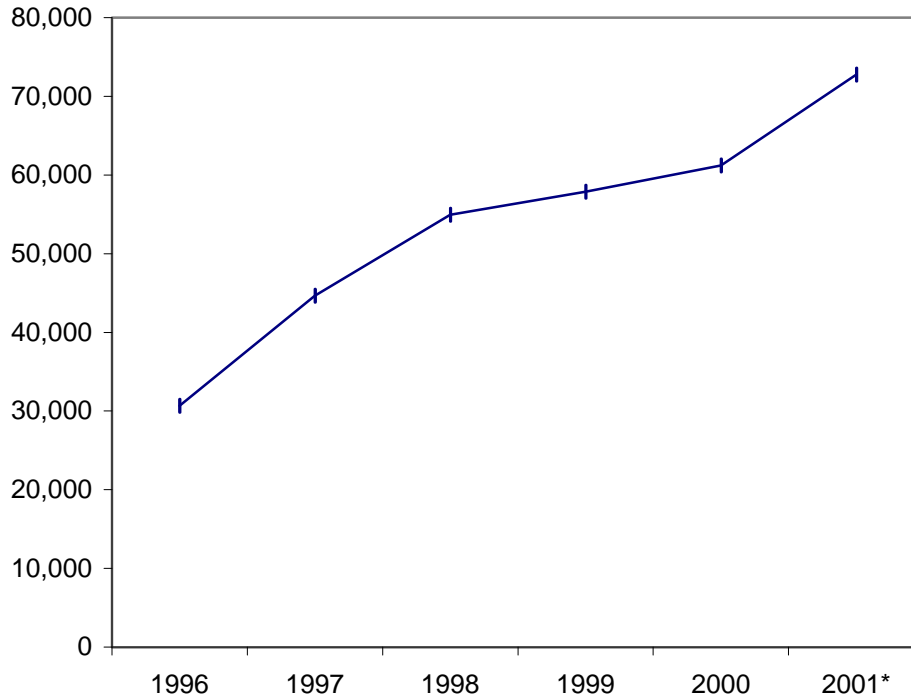
# Part J

## Computing and Communications

Number of UTORmail accounts at Year End	78
Messages Delivered by UTORmail Post Office	78
Number of Web Transactions	79
Institutional Internet Dial-in Service	79
Usage of Electronic Student Services	80

**NUMBER OF UTORmail ACCOUNTS AT YEAR END**

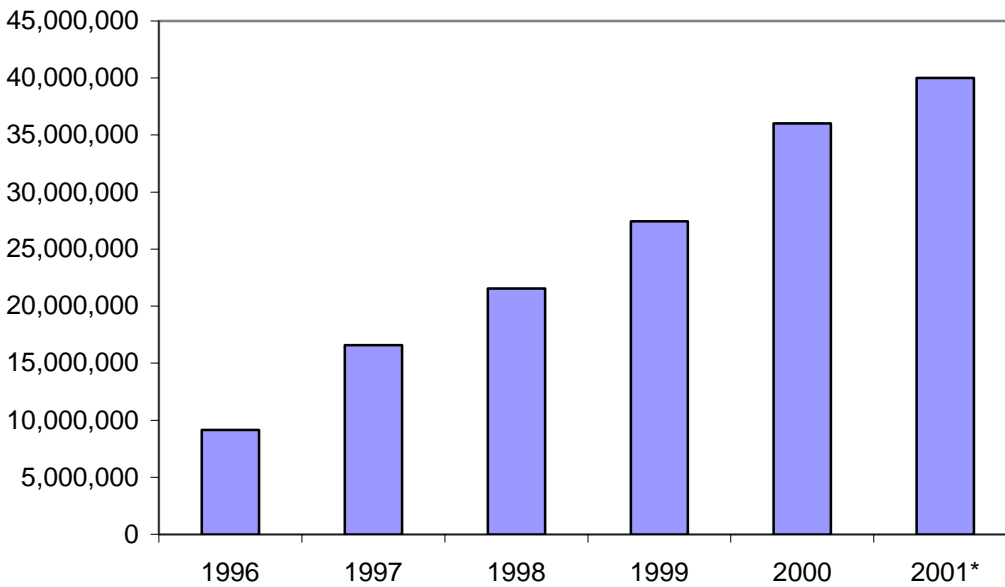
1996-2001



\*Note: 2001 figures represent the number of UTORmail accounts up to December 1, 2001.

**TOTAL NUMBER OF MESSAGES DELIVERED BY UTORmail POST OFFICE**

1996-2001

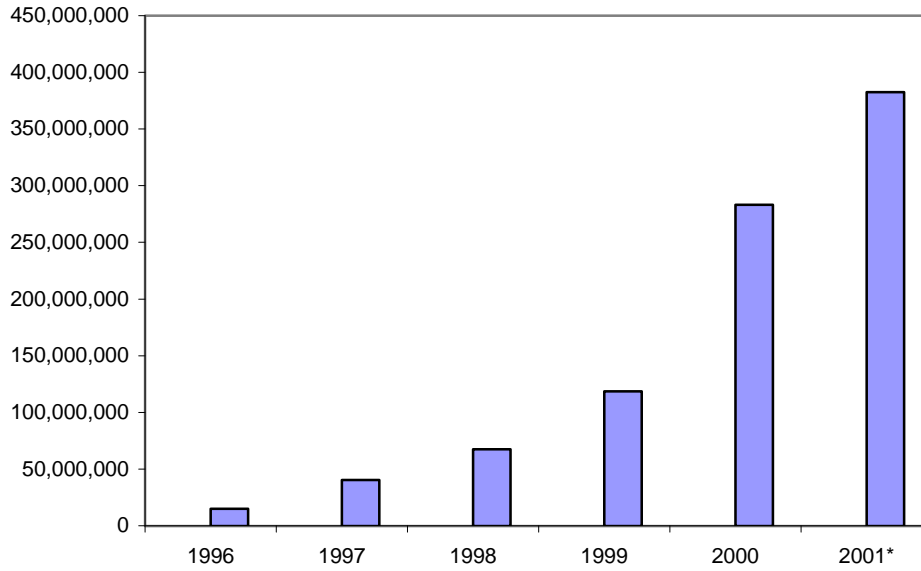


\*Note: 2001 figures represent the total messages delivered up to Nov 30, 2001.



**NUMBER OF WEB TRANSACTIONS**

For the institutional server www.utoronto.ca  
1996-2001



\*Note: 2001 figures represent the total number of web transactions up to Nov 30, 2001.

**INSTITUTIONAL INTERNET DIAL-IN SERVICES**

1997-2001

**Dial-in modem**

Up to 56,000 bits per second

Date	Phone Lines	Active Users	Calls per Week
November 1997	402	13,500	105,000
November 1998	512	14,500	116,000
November 1999	632	15,300	134,000
November 2000	663	12,500	113,000
November 2001	597	9,900	92,000

**U of T/Bell Sympatico  
High Speed Edition (HSE)\***

Up to 960,000 bits per second

Date	Using UofT	
	Active Users	Network Address
November 1999	0	0
November 2000	1,159	237
November 2001	1,744	419

\*Service first became available in November, 1999.

**USAGE OF ELECTRONIC STUDENT SERVICES***September 1, 2000-August 31, 2001*

Page 80

<b>ACTIVITY</b>	<b>ROSI STUDENT WEB SERVICES rosi.utoronto.ca</b>	<b>STUDENT TELEPHONE SERVICES 416-872-ROSI</b>
<b>Accessing the System</b>		
Access suspended	13,033	748
Change PIN	37,808	3,332
Login successfully	2,203,894	201,183
Unsuccessful attempt to change PIN	2,811	not logged
Unsuccessful attempt to login	98,790	6,319
<b>Maintaining Personal Information</b>		
Add new address	4,372	n.a.
Add new contact information	3,604	n.a.
Add new telephone number	3,537	n.a.
Change address	33,380	n.a.
Change contact information	1,556	n.a.
Change e-mail address	24,370	n.a.
Change telephone number	3,892	n.a.
<b>Choosing/Changing Academic Options</b>		
Accept Subject POST	3,571	n.a.
Add new Subject POST	28,922	302
Add academic activity	346,897	50,668
Cancel invited registration	n.a.	30
Change Subject POST	2,558	n.a.
Confirm graduation request	5,044	539
Delete Subject POST	12,454	127
Cancel registration/Deregister	3,361	525
Drop academic activity	146,587	17,871
List courses	994,655	46,293
Modify academic activity	125,342	7,825

**USAGE OF ELECTRONIC STUDENT SERVICES (Continued)**  
*September 1, 2000-August 31, 2001*

<b>ACTIVITY</b>	<b>ROSI STUDENT WEB SERVICES rosi.utoronto.ca</b>	<b>STUDENT TELEPHONE SERVICES 416-872-ROSI</b>
<b>Requesting/Paying for Transcripts</b>		
Request transcript, add charges to student account	7,417	n.a.
Request transcript, pay by credit card	14,040	n.a.
Request transcript pending payment	21,172	n.a.
Create electronic transcript invoice	15,026	n.a.
Pay electronic transcript invoice	11,642	n.a.
Unsuccessful electronic payment	1,557	n.a.
<b>Participating in Campus Life</b>		
Submit an electronic vote	9,535	n.a.

**Prepared by  
The Office of the Vice-Provost, Planning and Budget  
University of Toronto  
Toronto, Ontario, Canada**

**March 2002**