

**UNIVERSITY  
OF TORONTO**



**2004**

**Facts &  
Figures**

**Facts and Figures** is prepared annually by the Office of the Vice-Provost, Planning and Budget. **Facts and Figures** provides answers to some of the most frequently asked questions about the University. It is designed and organized to serve as a useful and reliable source of reference information from year to year.

The reader of **Facts and Figures** should take care when attempting to use the enclosed information comparatively. While some definitions are common to other universities, many others are not. Our Office maintains some comparative databases and has access to some others. Please contact us for assistance in using **Facts and Figures** comparatively.

Each year we try to improve **Facts and Figures** to make it as useful as possible. We are always grateful for suggestions for improvement.

**Facts and Figures** can also be accessed on the World Wide Web at [www.library.utoronto.ca/facts/](http://www.library.utoronto.ca/facts/)

Other Official Publications of the University:

- **Performance Indicators for Governance Report**  
(<http://www.provost.utoronto.ca/English/Performance-Indicators-for-Governance.html>)
- **University of Toronto National Report** (<http://www.nationalreport.utoronto.ca/>)
- **University of Toronto Condensed Financial Report**  
(<http://www.finance.utoronto.ca/English/Condensed-Financial-Statements.html>)

Corinne Pask-Aubé is the manager of **Facts and Figures** for 2004. She deserves our gratitude for her efforts. She can be reached at (416) 978-7367 or through e-mail at [corinne.pask@utoronto.ca](mailto:corinne.pask@utoronto.ca).

We would also like to thank the contributors for their help in collecting data for each of the sections: Pierre Piché, José Sigouin, Meredith Strong, Ken Debaermaeker, Tony DiFelice, Mary Ellen Caskenette, Brian Dowling, Susana Gajic, Hung Sun Chan, Barry Murphy, Michelle Broderick, Phil Harper, Solange Silverberg, Brian Armstrong, Arlene Clement, Rick Haywood, and Alex Nishri.

Safwat Zaky  
Vice-Provost, Planning and Budget  
Room 240, Simcoe Hall  
27 King's College Circle  
Toronto, Ontario  
M5S 1A1  
[www.utoronto.ca/planning](http://www.utoronto.ca/planning)

## CONTENTS

<b>Part A</b>	<b>General</b>	<b>3</b>
	1. Organization of Senior Administration	
	2. Major Academic Divisions	
	3. Degrees, Diplomas and Certificates Offered	
<b>Part B</b>	<b>Finances</b>	<b>15</b>
	<b>University of Toronto Financial Statements</b>	
	1. Statement of Operations	
	2. Changes in Surplus/Deficit	
	3. Operating Fund Expense Summary	
	4. Operating Fund: Academic Expense Summary	
	5. Restricted Funds	
	<b>University of Toronto Budget Reports</b>	
	6. Expense Budget Summary	
	7. Academic Costs	
<b>Part C</b>	<b>Research</b>	<b>25</b>
	1. Research Population	
	2. Revenue from Externally Sponsored Research	
	3. Academic Linkages with International Institutions	
	4. Technology Transfer Activities:	
	a) Invention Disclosures	
	b) Spin-off Companies	
	c) Industrial Contracts & Grants	
	d) Government Funding Leveraged by Industrial Collaboration	
<b>Part D</b>	<b>Students</b>	<b>31</b>
	1. Enrolment by Campus and Faculty/College	
	2. Enrolment: Age and Gender Balance	
	3. International Student Enrolment by Geographic Origin	
	4. International Students by Geographic Origin: 5 Year Trend	
	5. Ten Year Enrolment Trends, All Students	
	6. Gender Balance of Graduate and Undergraduate Enrolments by Field of Study	
	7. Undergraduate Intake by Faculty	
	8. Graduate Intake by Faculty	
	9. Total Intake	
	10. Degrees Awarded by Gender	
	11. Tuition Fees:	
	a) Domestic and International Students	
	b) Self-Funded Programs	
	c) OISE/UT Schools	
<b>Part E</b>	<b>Graduates</b>	<b>51</b>
	1. Graduates by Region	
	2. Number of Degrees Awarded by College or Faculty Affiliation	
	3. Overall Fundraising Achievement	
	4. Overall Fundraising Achievement: Source of Donations	

**CONTENTS** (continued)

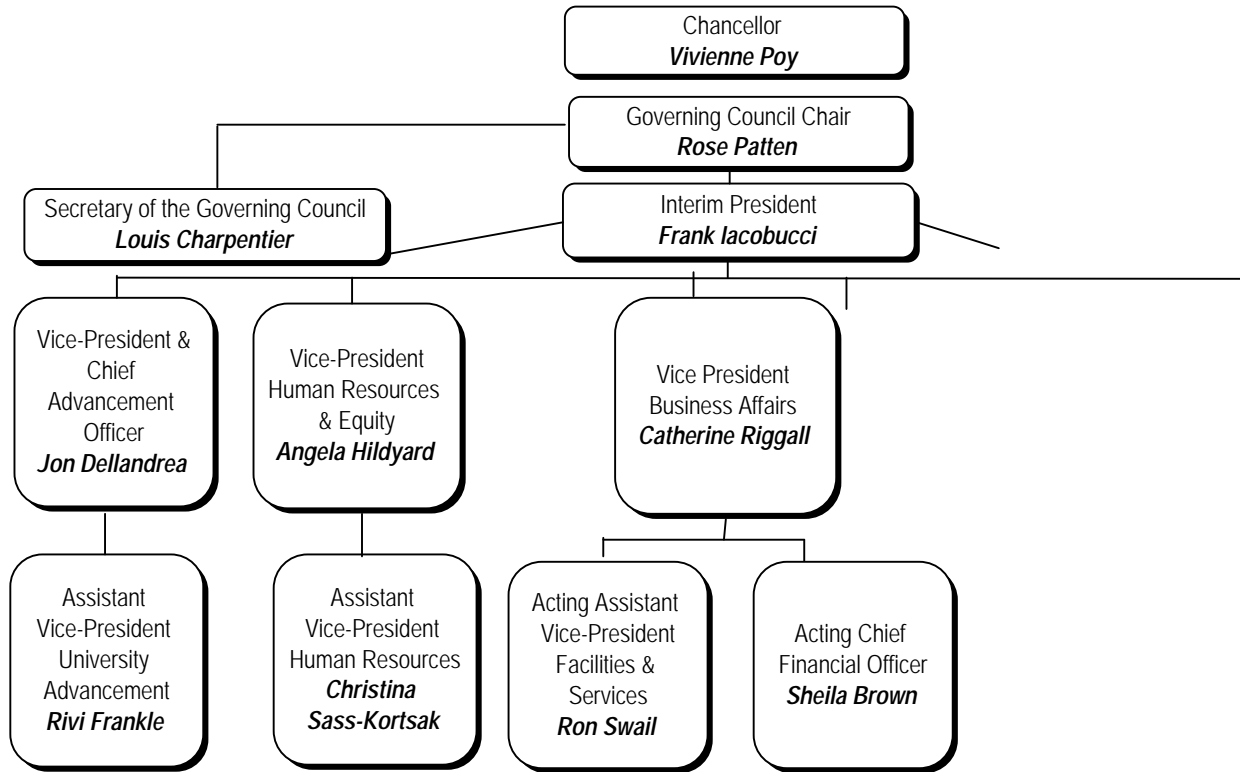
<b>Part F</b>	<b>Student Awards</b>	57
	1. Graduate Student Support by Source	
	2. Graduate Student Support by S.G.S. Division	
	3. Undergraduate Student Support : Admission Scholarships, In-Course Scholarships and Bursaries by Faculty and College	
	4. OSAP and University of Toronto Advanced Planning for Students program (UTAPS) by Faculty and College	
<b>Part G</b>	<b>Faculty and Administrative Staff</b>	63
	1. Distribution of Full-Time Appointed Tenured/Tenure Stream Faculty by Major Division and Main Appointment	
	2. Distribution of Full-Time Tenured/Tenure Stream Faculty by Rank and Gender	
	3. Age Distribution of Tenured/Tenure Stream Faculty	
	4. Distribution of Full and Part Time (>=25%) Academic Staff and Librarians by Rank and Gender	
	5. Distribution of Full and Part-Time Administrative and Union Staff	
	6. Operating Fund Full-Time Equivalent Staff	
<b>Part H</b>	<b>Library</b>	71
	1. Library Collections	
	2. Number of Loans	
	3. Number of Computers in the Library	
	4. Digital Library E-Resources	
	5. Number of Electronic Articles Downloaded	
<b>Part I</b>	<b>Physical Plant</b>	75
	1. Usage of Assignable Space	
	2. Number of Buildings and Gross Square Metres	
	3. Area of U of T Properties	
	4. Number of Parking Spaces	
	5. Public Assembly Facilities	
	6. Number of Places in Student Residences	
<b>Part J</b>	<b>Computing and Communications</b>	81
	1. Number of UTORmail Accounts at Year End	
	2. Number of Messages Delivered by UTORmail Post Office	
	3. Number of Web Transactions	
	4. Institutional Internet Dial-in Service	
	a) Dial-in Modem	
	b) U of T/Bell Sympatico High Speed Edition (HSE)	
	5. Campus Wireless Network	
	6. Usage of Electronic Student Services	

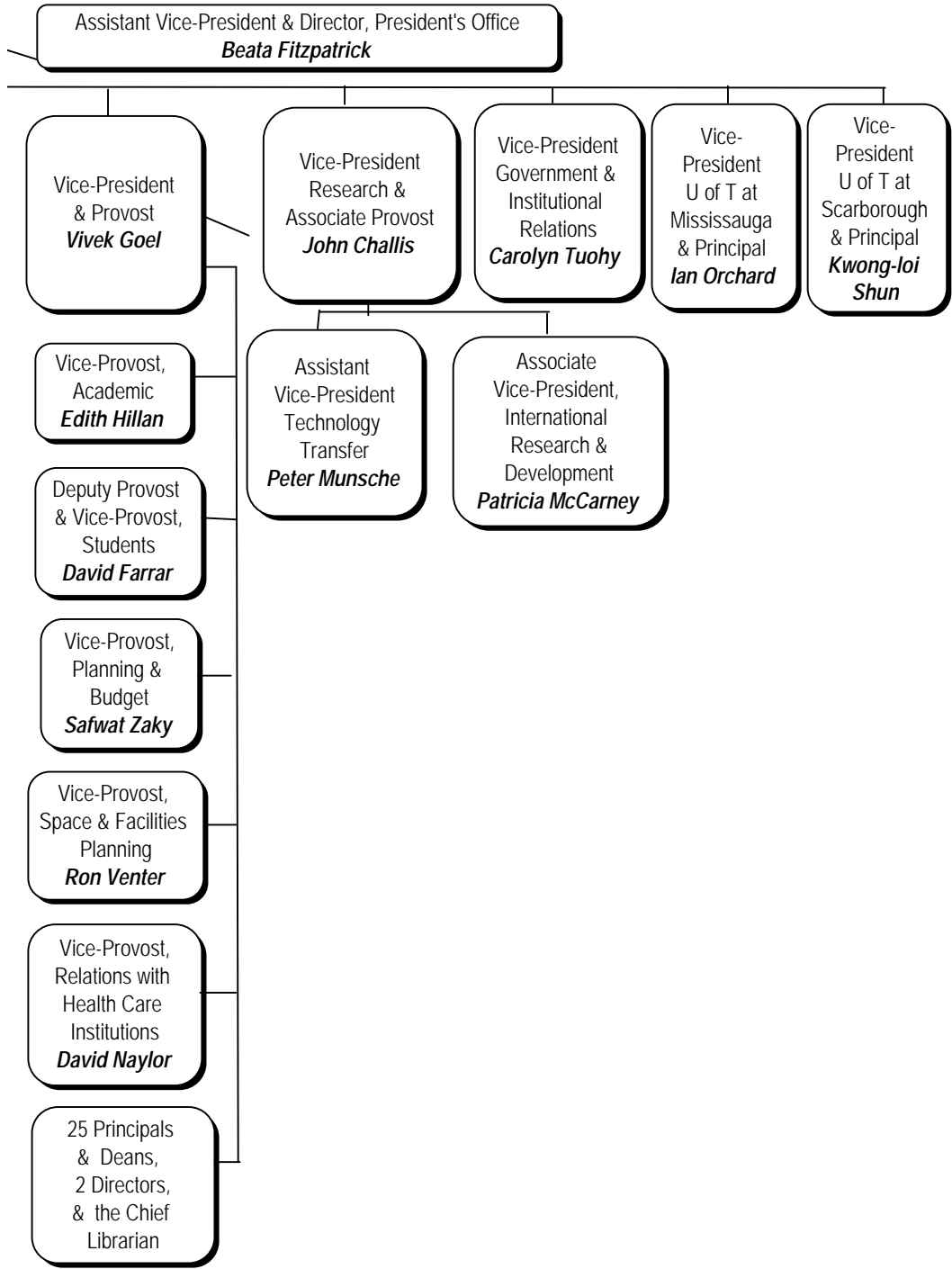
# Part A

## **General**

Organization of Senior Administration	4
Major Academic Divisions	6
Degrees, Diplomas and Certificates Offered	10

**ORGANIZATION OF SENIOR ADMINISTRATION**  
2004-2005





## **MAJOR ACADEMIC DIVISIONS**

2004-2005

### **Faculty of Applied Science and Engineering**

Aerospace Studies, Institute for  
Biomaterials and Biomedical Engineering, Institute of  
Chemical Engineering and Applied Chemistry  
Civil Engineering  
Edward S. Rogers Sr. Electrical and Computer Engineering  
Engineering Science, Division of  
Environmental Engineering, Division of  
Materials Science and Engineering  
Mechanical and Industrial Engineering  
Mineral Engineering

### **Faculty of Architecture, Landscape, and Design**

### **Faculty of Arts and Science - Departments (St. George Campus)**

Anthropology  
Astronomy & Astrophysics  
Botany  
Chemistry  
Classics  
Commerce & Finance Program  
Comparative Literature, Centre for  
Computer Science  
East Asian Studies  
Economics  
English  
Environment, Division of the  
Fine Art  
French  
Geography  
Geology  
Germanic Languages & Literatures  
History  
History & Philosophy of Science & Technology, Institute for  
Human Biology Division  
Italian Studies  
Linguistics  
Mathematics  
Medieval Studies Centre  
Near & Middle Eastern Civilizations  
Philosophy  
Physics  
Political Science  
Psychology  
Religion, Department/Centre for the Study of  
Slavic Languages & Literatures  
Sociology  
Spanish & Portuguese  
Statistics  
United States, Centre for the Study of  
Zoology



## **MAJOR ACADEMIC DIVISIONS (continued)**

2004-2005

### **Faculty of Arts and Science - Colleges (St. George Campus)**

Constituent Colleges:

- Innis College
- New College
- University College
- Woodsworth College

Federated Colleges:

- St. Michael's College
- Trinity College
- Victoria College

### **School of Continuing Studies**

### **Faculty of Dentistry**

### **Faculty of Forestry**

### **Centres and Institutes**

- Asian Institute at the University of Toronto
- Criminology, Centre of
- Drama, Centre for the Study of
- Environmental Studies, Institute for
- European Studies, Institute of
- Human Development, Life Course and Aging, Institute for
- Industrial Relations, Centre for
- International Relations, Centre for
- International Studies, Munk Centre for
- Knowledge Media Design Institute
- Policy Analysis, Institute for
- Russian and East European Studies, Centre for
- South Asian Studies, Centre for
- Theoretical Astrophysics, Canadian Institute for
- Urban and Community Studies, Centre for

### **School of Graduate Studies**

- Division I - Humanities
- Division II - Social Sciences
- Division III - Physical Sciences
- Division IV - Life Sciences

### **Faculty of Information Studies**

- Mcluhan Program in Culture and Technology

### **Faculty of Law**

### **Joseph L. Rotman School of Management**

## **MAJOR ACADEMIC DIVISIONS (continued)**

2004-2005

### **Faculty of Medicine**

Anesthesia  
Banting and Best Department of Medical Research  
Biochemistry  
Biomaterials and Biomedical Engineering, Institute of (joint institute with Faculty of Applied Science and Engineering)  
Drug Research, Institute for (joint institute with Faculty of Pharmacy)  
Family and Community Medicine  
Health Policy, Management and Evaluation  
Immunology  
Laboratory Medicine and Pathobiology  
Medical Biophysics  
Medical Genetics and Microbiology  
Medical Imaging  
Medical Science, Institute of  
Medicine  
Nutritional Sciences  
Obstetrics and Gynaecology  
Occupational Therapy  
Ophthalmology and Vision Sciences  
Otolaryngology - Head and Neck Surgery  
Paediatrics  
Pharmacology  
Physical Therapy  
Physiology  
Psychiatry  
Public Health Sciences  
Radiation Oncology  
Rehabilitation Science  
Speech-Language Pathology  
Surgery

### **Faculty of Music**

### **Faculty of Nursing**

## **MAJOR ACADEMIC DIVISIONS (continued)**

2004-2005

### **OISE/UT**

Adult Education and Counselling Psychology  
Child Study, Institute of  
Curriculum, Teaching and Learning  
Human Development and Applied Psychology  
Sociology and Equity Studies in Education  
Theory and Policy Studies in Education

### **Leslie L. Dan Faculty of Pharmacy**

Drug Research, Institute for (joint institute with Faculty of Medicine)

### **Faculty of Physical Education and Health**

### **Faculty of Social Work**

### **Transitional Year Program**

### **University of Toronto at Mississauga**

Humanities  
Institute of Communication and Culture  
Sciences  
Social Sciences

### **University of Toronto at Scarborough**

Department of Computer & Mathematical Sciences  
Department of Humanities  
Department of Life Sciences  
Division of Management  
Department of Physical & Environmental Sciences  
Department of Social Sciences

### **Woodsworth College**

Professional and International Programs  
Millie Rotman Shime Academic Bridging Program  
Millie Rotman Shime Pre-University Mathematics Program

## DEGREES, DIPLOMAS AND CERTIFICATES OFFERED

2004-2005

### UNDERGRADUATE AND FIRST PROFESSIONAL DEGREES

#### Faculty of Applied Science and Engineering:

Bachelor of Applied Science B.A.Sc.

#### Faculty of Arts and Science

##### St. George Campus:

Honours Bachelor of Arts Hon.B.A.

Honours Bachelor of Science Hon.B.Sc.

Bachelor of Commerce B.Com.

#### University of Toronto at Mississauga:

Honours Bachelor of Arts Hon.B.A.

Honours Bachelor of Science Hon.B.Sc.

Bachelor of Commerce B.Com.

#### University of Toronto at Scarborough:

Honours Bachelor of Arts Hon.B.A.

Honours Bachelor of Science Hon.B.Sc.

Bachelor of Business Administration B.B.A.

#### Faculty of Dentistry:

Doctor of Dental Surgery D.D.S.

#### Faculty of Law:

Juris Doctor J.D.

Juris Doctor and Certificate in Environmental Studies J.D. (and a certificate in Env. Studies)

#### Faculty of Medicine:

Doctor of Medicine M.D.

Bachelor of Science, Medical Radiation Sciences B.Sc.Med.Rad.Sc.

#### Faculty of Music:

Bachelor of Music Mus.Bac.

Bachelor of Music in Performance Mus Bac.Perf.

#### Faculty of Nursing:

Bachelor of Science in Nursing B.Sc.N.

#### OISE/UT:

Bachelor of Education B.Ed.

#### Leslie L. Dan Faculty of Pharmacy:

Doctor of Pharmacy Pharm.D.

Bachelor of Science in Pharmacy B.Sc.Pharm.

#### Faculty of Physical Education and Health:

Bachelor of Physical and Health Education B.P.H.E.

**DEGREES, DIPLOMAS AND CERTIFICATES OFFERED (continued)**  
*2004-2005*

**UNDERGRADUATE AND FIRST PROFESSIONAL DIPLOMAS  
AND CERTIFICATES**

**Faculty of Dentistry:**

Certificate of Qualification in Dentistry Cert.Q.P.Dent.

**Faculty of Music:**

Artist Diploma Art.Dip.Mus.

**Faculty of Nursing:**

Certificate as a Nurse Practitioner  
(Primary Health Care) Cert.N.P.(PHC)

**OISE/UT:**

Diploma in Technical Education Dip.T.Ed.

**University of Toronto at Scarborough:**

Certificate in Business Cert.Bus.

**Woodsworth College:**

Certificate in Human Resource Management C.H.R.M.  
Certificate in Teaching English as a Second Language C.T.E.S.L.

**DEGREES, DIPLOMAS AND CERTIFICATES OFFERED (continued)**

2004-2005

**GRADUATE DEGREES****School of Graduate Studies:**

Executive Master of Business Administration	E.M.B.A.
Juris Doctor and Doctor of Philosophy (Economics, Philosophy, Political Science)	J.D./Ph.D.
Juris Doctor and Master of Arts (Criminology, Economics, Russian and East European Studies)	J.D./M.A.
Juris Doctor and Master of Business Administration	J.D./M.B.A.
Juris Doctor and Master of Information Studies	J.D./M.I.St.
Juris Doctor and Master of Social Work	J.D./M.S.W.
Doctor of Dentistry and Doctor of Philosophy	D.D.S./Ph.D.
Doctor of Education	Ed.D.
Doctor of Juridical Science	S.J.D.
Doctor of Medicine and Doctor of Philosophy	M.D./Ph.D.
Doctor of Music	Mus. Doc.
Doctor of Philosophy	Ph.D.
Master of Applied Science	M.A.Sc.
Master of Architecture	M.Arch.
Master of Arts	M.A.
Master of Biotechnology	M.Biotech
Master of Business Administration	M.B.A.
Master of Business Administration and Master of Arts in Russian and East European Studies	M.B.A./M.A.(REES)
Master of Business Administration and Master of Nursing	M.N./M.B.A.
Master of Business Administration and Jeffrey Skoll	
Bachelor of Applied Science	B.A.Sc./M.B.A.
Master of Education	M.Ed.
Master of Engineering	M.Eng.
Master of Engineering in Design and Manufacturing	M.Eng.D.M.
Master of Engineering in Telecommunications	M.Eng.Tel.
Master of Financial Economics	M.F.E.
Master of Forest Conservation	M.F.C.
Master of Health Science	M.H.Sc.
Master of Health Science in Health Administration/ Master of Social Work	M.H.Sc./M.S.W.
Master of Industrial Relations and Human Resources	M.I.R.H.R.
Master of Information Studies	M.I.St.
Master of International Trade in Forest Products	M.I.T.F.P.
Master of Landscape Architecture	M.L.A.
Master of Laws	LL.M.
Master of Management & Professional Accounting	M.M.P.A.
Master of Mathematical Finance	M.M.F.
Master of Museum Studies	M.M.St.
Master of Music	Mus.M.
Master of Nursing	M.N.
Master of Science	M.Sc.
Master of Science in Forestry	M.Sc.F.
Master of Science in Occupational Therapy	M.Sc.O.T.
Master of Science in Planning	M.Sc.Pl.
Master of Science in Physical Therapy	M.Sc.P.T.
Master of Science in Physical Therapy/Master of Science in Rehabilitation Science	M.Sc.P.T./M.Sc.
Master of Social Work	M.S.W.
Master of Spatial Analysis	M.S.A.
Masters in Studies in Law	M.S.L.

**DEGREES, DIPLOMAS AND CERTIFICATES OFFERED (continued)**

2004-2005

**School of Graduate Studies (continued):**

Master of Teaching	M.T.
Master of Urban Design	M.U.D.
Master of Urban Design Studies	M.U.D.S.
Master of Visual Studies	M.V.S.

**GRADUATE DEGREES WITH ADVANCED SPECIALTY TRAINING,  
GRADUATE DIPLOMAS AND GRADUATE CERTIFICATES****Faculty of Applied Science and Engineering:**

Professional Pilot and Aviation Management Diploma	Dip.P.P.A.M.
--	--------------

**Faculty of Dentistry:**

M.Sc. Advanced Dental Specialty Degree Program:

Dental Anaesthesia  
Dental Public Health  
Endodontics  
Oral Pathology  
Oral Pathology and Medicine  
Oral Radiology  
Oral and Maxillofacial Surgery and Anaesthesia  
Orthodontics  
Paediatric Dentistry  
Periodontology  
Prosthodontics

**Faculty of Information Studies:**

Graduate Diploma of Advanced Study in Information Studies	G.Dip.ISt
---	-----------

**Faculty of Medicine:**

Diploma in Child Psychiatry	D.Child Psych.
Diploma in Clinical Chemistry	D.Cl.Chem.
Diploma in Industrial Health	D.I.H.
Diploma in Ophthalmic Science	D.Oph.Sci.
Post-Doctoral training in Medical Microbiology	

**Faculty of Music:**

Diploma in Operatic Performance	Dip.Op.Perf.
Advanced Certificate in Performance	Adv.Cert.Perf.

**Faculty of Nursing:**

Post Masters Nurse Practitioner Diploma	Dip.N.P.
---	----------

**Faculty of Social Work:**

Diploma in Social Work Research	Res.Dip.S.W.
---------------------------------	--------------

**OISE**

Diploma Program in Holocaust & Genocide Education	D.H.G.E.
---	----------

**Josph L. Rotman School of Management**

Advanced Program in Human Resources Management	
Advanced Program in Managing Strategic Change	
Diploma in Investigative & Forensic Accounting	D.I.F.A.

# Part B

## Finances

### **University of Toronto Financial Statements**

Statement of Operations	16
Changes in Surplus/Deficit	18
Operating Fund Expense Summary	19
Operating Fund: Academic Expense Summary	20
Restricted Funds	21

### **University of Toronto Budget Reports**

Expense Budget Summary	22
Academic Costs	23



**UNIVERSITY OF TORONTO FINANCIAL STATEMENTS 2003-04****STATEMENT OF OPERATIONS***for the year ended April 30, 2004*

(with comparative figures for the year ended April 30, 2003)

(millions of dollars)

	<b>OPERATING FUND</b>	<b>ANCILLARY OPERATIONS</b>	<b>CAPITAL FUND</b>	<b>RESTRICTED FUNDS</b>	<b>TOTAL 2004</b>	<b>TOTAL 2003</b>
<b>Revenues</b>						
Government Grants - general operations	479.8				479.8	422.7
Student Fees	426.4	5.1	1.6		433.1	380.9
Government & other grants - restricted purpose:		(6.1)	40.2	261.1	295.2	222.1
Sales, services and sundry income	66.7	106.8	1.2		174.7	159.4
Investment income (loss)						
Endowments	33.0			46.7	79.7	
Other	26.3	(7.6)	2.0	23.5	44.2	(55.6)
Donations		6.2	12.2	21.0	39.4	36.6
Contract research	5.2			16.8	22.0	26.6
<b>Total Revenues</b>	<b>1,037.4</b>	<b>104.4</b>	<b>57.2</b>	<b>369.1</b>	<b>1,568.1</b>	<b>1,192.7</b>

**UNIVERSITY OF TORONTO FINANCIAL STATEMENTS 2003-04**

**STATEMENT OF OPERATIONS (continued)**

*for the year ended April 30, 2004*

(with comparative figures for the year ended April 30, 2003)

(millions of dollars)

	OPERATING FUND	ANCILLARY OPERATIONS	CAPITAL FUND	RESTRICTED FUNDS	TOTAL 2004	TOTAL 2003
<b>Expenses</b>						
Salaries and benefits	740.8	9.2		157.8	907.8	800.8
Materials and supplies	64.5	3.4		116.3	184.2	153.4
Scholarships, fellowships and bursaries	108.8				108.8	98.8
Amortization of capital assets	4.1	7.0	65.7		76.8	71.1
Cost of sales and services		70.7			70.7	67.4
Utilities	32.5	5.7			38.2	39.1
Repairs and maintenance	23.0	8.1	2.8	4.4	38.3	38.8
Travel and conferences	10.8			16.9	27.7	28.8
Interest	15.9	3.9			19.8	15.4
External contracted services	13.1			2.8	15.9	14.8
Telecommunications	9.0			1.2	10.2	9.6
Other	12.4		2.4	8.3	23.1	19.1
<b>Total Expenses</b>	<b>1,034.9</b>	<b>108.0</b>	<b>70.9</b>	<b>307.7</b>	<b>1,521.5</b>	<b>1,357.1</b>

**UNIVERSITY OF TORONTO FINANCIAL STATEMENTS 2003-04****CHANGES IN SURPLUS/DEFICIT***for the year ended April 30, 2004**(with comparative figures for the year ended April 30, 2003)**(millions of dollars)*

	<b>OPERATING FUND</b>	<b>ANCILLARY OPERATIONS</b>	<b>CAPITAL FUND</b>	<b>RESTRICTED FUNDS</b>	<b>TOTAL 2004</b>	<b>TOTAL 2003</b>
Net Income (loss)	2.5	(3.6)	(13.7)	61.4	46.6	(164.4)
Net transfers between funds	(4.4)	(0.2)	(16.6)	21.2		
Transfer of capital assets	(31.1)		31.1			
Change in committed capital	56.1	0.3	(2.6)	(33.4)	20.4	58.3
Change in equity in capital assets		(12.0)	13.7		1.7	5.4
Transfers of donations to endowments				(16.0)	(16.0)	(8.2)
Transfer from internally restricted endowments				(33.2)	(33.2)	73.7
<b>Net change in surplus (deficit) for the year</b>	<b>23.1</b>	<b>(15.5)</b>	<b>11.9</b>		<b>19.5</b>	<b>(35.2)</b>
Surplus (deficit), beginning of the year	(33.6)	(0.9)	(32.7)		(67.2)	(32.0)
<b>Surplus (deficit), end of year</b>	<b>(10.5)</b>	<b>(16.4)</b>	<b>(20.8)</b>		<b>(47.7)</b>	<b>(67.2)</b>

**UNIVERSITY OF TORONTO FINANCIAL STATEMENTS 2003-04**

**OPERATING FUND EXPENSE SUMMARY**

*Expense Summary for the year ended April 30, 2004*

(with comparative totals for the year ended April 30, 2003)

(thousands of dollars)

	ACADEMIC SALARIES	OTHER SALARIES	STAFF BENEFITS	TOTAL SALARIES AND BENEFITS	SUPPLIES AND OTHER EXPENSES	SCHOLARSHIPS FELLOWSHIPS BURSARIES	TOTAL	ELIMINATIONS AND RECLASSIFICATIONS	TOTAL DIVISIONAL EXPENSE
Academic	\$313,395	\$136,604	\$85,770	\$535,769	\$135,347		\$671,115	(\$10,158)	\$660,958
Academic Services	8,517	26,100	6,331	40,948	35,201		76,149	(212)	75,937
Campus & Student Services		12,230	2,004	14,234	8,970		23,205	1,167	24,372
Student Assistance		2,808	322	3,130	(253)	108,802	111,680	7,996	119,676
Operation & Maintenance of Physical Plant		32,395	6,081	38,476	85,882		124,359	(43,264)	81,095
Administration		47,021	8,863	55,883	18,862		74,745	(9,103)	65,642
Interest								15,872	15,872
Renovations and Alterations Amortization					9,310		9,310	(7,744)	1,566
Other Expenditures		2,456	304	2,760	14,677		17,437	(818)	16,619
<b>Sub-Total</b>	<b>321,912</b>	<b>259,614</b>	<b>109,675</b>	<b>691,201</b>	<b>307,997</b>	<b>108,802</b>	<b>1,108,000</b>	<b>(42,115)</b>	<b>1,065,885</b>
Eliminations	(12,775)	(18,117)	80,435	49,543	(\$91,657)		(42,115)		
<b>Total Expenses</b>	<b>\$309,137</b>	<b>\$241,496</b>	<b>\$190,110</b>	<b>\$740,743</b>	<b>\$216,340</b>	<b>\$108,802</b>	<b>\$1,065,885</b>		<b>1,065,885</b>
2002-03 Comparatives	\$296,006	\$227,939	\$129,391	\$653,335	\$203,009	\$98,819	955,164		
Percentage Change	4.44%	5.95%	46.93%	13.38%	6.57%	10.10%	11.59%		

Note: "Eliminations and Reclassifications" column represent external recovery of salaries and benefits as well as internal departmental changes between different functional groups.

**UNIVERSITY OF TORONTO FINANCIAL STATEMENTS 2003-04****OPERATING FUND: ACADEMIC EXPENSE SUMMARY***For the year ending April 30, 2004*

(thousands of dollars)

	<b>NET EXPENSES</b>
	<b>2003-04</b>
<b>Arts &amp; Science, Colleges &amp; Schools:</b>	
Arts & Science	\$166,938
Federated Colleges Block Grant	8,894
Graduate Centres & Institutes	7,933
Mississauga, University of Toronto at - Academic	40,573
Scarborough, University of Toronto at - Academic	40,365
School of Continuing Studies	8,494
School of Graduate Studies	4,453
Transitional Year Program	1,294
<b>Health Science Faculties/Schools:</b>	
Dentistry	\$21,481
Medicine	85,369
Nursing	7,161
Pharmacy	7,043
Physical Education and Health	16,432
<b>Other Professional Faculties:</b>	
Applied Science & Engineering	\$55,558
Architecture, Landscape, and Design	4,735
Forestry	2,413
Information Studies	4,274
Law	14,439
Management	34,156
Music	8,163
OISE/UT	48,778
Social Work	4,681
University of Toronto Schools	6,197
<b>Other Academic</b>	<b>\$61,134</b>
<b>Total Academic Expense</b>	<b>\$660,958</b>

**UNIVERSITY OF TORONTO FINANCIAL STATEMENTS 2003-04****RESTRICTED FUNDS****Endowments and Expendable Funds at Market***for the year ending April 30, 2004 (with comparative figures for the year ended April 30, 2003)*

(thousands of dollars)

	ENDOWMENT FUNDS		EXPENDABLE FUNDS	
	2004	2003	2004	2003
l'Anson Fund	\$2,940	\$3,011		\$4,359
Connaught Funds	83,784	73,376	\$5,564	3,964
Departmental Funds	138,496	115,046	117,967	119,396
Faculty Endowment Funds	390,748	314,495	8,347	7,018
Miscellaneous Funds	31,760	28,756	14,207	15,989
Ontario Student Opportunity Trust Funds Phase 1	301,633	258,118	19,286	20,142
Ontario Student Opportunity Trust Funds Phase 2	14,549		110	
Research Funds	117,171	100,268	144,334	140,259
Student Aid Funds	206,569	169,171	22,756	23,895
Supplemental Retirement Arrangement			118,962	89,065
<b>Total University of Toronto</b>	<b>\$1,287,650</b>	<b>\$1,062,241</b>	<b>\$451,533</b>	<b>\$424,087</b>
<b>Affiliated Universities</b>	<b>257,097</b>	<b>231,510</b>	<b>na</b>	<b>na</b>
<b>Total</b>	<b>\$1,544,747</b>	<b>\$1,293,751</b>	<b>na</b>	<b>na</b>

## UNIVERSITY OF TORONTO BUDGET REPORTS

### EXPENSE BUDGET SUMMARY

*Time Series Comparison of Major Budget Categories, based on net expense budgets*

*2002-03 to 2004-05*

(Millions of dollars)

	2004-05	% INCREASE OVER PRIOR YEAR	2003-04	% INCREASE OVER PRIOR YEAR	2002-03
Academic	587.7	12%	523.2	12%	467.1
Academic Services	60.6	4%	58.5	3%	56.8
Campus & Student Services	1.4	19%	1.2	71%	0.7
Student Assistance	66.5	6%	63.0	-11%	70.4
Facilities & Services	42.8	15%	37.3	4%	35.7
Utilities	33.2	8%	30.7	1%	30.3
Alterations, Renovations, Lease Costs	1.6	-4%	1.7	0%	1.7
Administration	67.9	13%	60.3	3%	58.6
General University Expense	78.4	121%	35.5	10%	32.2
Municipal Taxes	4.2	18%	3.6	9%	3.3
<b>Total Expense Budget Summary</b>	<b>944.4</b>		<b>815.0</b>		<b>757.0</b>
Administrative costs as % of Academic Costs	12%		12%		13%
Administrative Costs as % of Academic Costs & Academic Services Costs	10%		10%		11%
General University Costs as % of Academic Costs	13%		7%		7%

## UNIVERSITY OF TORONTO BUDGET REPORTS

### ACADEMIC COSTS

*Time Series Comparison of Major Academic Costs, based on Net Expense Budgets*

*2002-03 to 2004-05*

(Millions of dollars)

	2004-05	% OF BUDGET	% INCREASE OVER PRIOR YEAR	2003-04	% OF BUDGET	% INCREASE OVER PRIOR YEAR	2002-03	% OF BUDGET
Gross Expense Budget	845.6			777.6			709.4	
Recoveries	(128.6)			(127.9)			(116.4)	
Divisional Income	(129.2)			(126.5)			(125.8)	
Net Expense Budget	587.7		12%	523.2		12%	467.2	
Arts & Science, Colleges & Schools	252.5	43%	8%	234.2	45%	8%	216.0	46%
Health Sciences	100.3	17%	5%	95.1	18%	7%	89.2	19%
Other Professional Faculties	113.3	19%	6%	106.9	20%	15%	92.7	20%
Other Academic Costs	121.6	21%	40%	87.0	17%	26%	69.3	15%
Net Expense Budget	587.7	100%		523.2	100%		467.2	100%
Instructional Salaries	458.9	54%	9%	420.8	54%	8%	389.4	55%
Other Salaries & Wages	120.4	14%	2%	118.1	15%	5%	112.9	16%
Benefits	86.9	10%	5%	83.0	11%	5%	78.9	11%
Books & Equipment	9.6	1%	8%	8.9	1%	-10%	9.9	1%
Supplies & Services	140.1	17%	21%	115.6	15%	16%	99.3	14%
Student Awards	29.7	4%	-5%	31.2	4%	64%	19.0	3%
Gross Expense Budget	845.6	100%		777.6	100%		709.4	100%



# Part C

## Research

Research Population	26
Revenue from Externally Sponsored Research	27
Academic Linkages with International Institutions	28
Technology Transfer Activities:	
a) Invention Disclosures	29
b) Spin-off Companies	29
c) Industrial Contracts & Grants	30
d) Government Funding Leveraged by Industrial Collaboration	30

## RESEARCH POPULATION

September 2004

	HUMANITIES	SOCIAL SCIENCES	PHYSICAL SCIENCES	LIFE SCIENCES	TOTAL
Full-Time Faculty	432	663	497	799	2,391
Part-Time Faculty	29	19	15	161	224
Status-Only Faculty	37	129	118	2,540	2,824
Full-Time Research Associates	6	9	110	98	223
Part-Time Research Associates	1	5	12	5	23
Post-Doctoral Fellows	23	20	338	1,086	1,467
Graduate Students	1,216	5,008	2,276	3,257	11,757
Research Staff	3	27	167	343	540

### Notes:

1. Numbers shown here may differ from the full time faculty counts in other tables because of selection criteria for inclusion in the research population.
2. Faculty includes professorial ranks only.
3. Faculty members may have multiple appointments; only the main appointment was counted in the research population.
4. The figure for post-doctoral fellows includes those at the affiliated hospitals.
5. The figure for research staff includes only those appointed in academic departments, and excludes casual staff and all research staff appointed at affiliated hospitals.

## REVENUE FROM EXTERNALLY SPONSORED RESEARCH

(thousands of dollars)

	2001-2002	2002-2003	2003-04
<b>University of Toronto</b>			
Grants and Contracts	\$215,413	\$269,229	\$292,681
Donations	2,208	1,562	1,305
<b>Subtotal</b>	<b>217,621</b>	<b>270,791</b>	<b>293,986</b>
Overhead	32,299	14,694	30,973
<b>Total, University of Toronto</b>	<b>\$249,919</b>	<b>\$285,485</b>	<b>\$324,959</b>
<b>Affiliated Hospitals*</b>	<b>\$263,042</b>	<b>\$275,244</b>	<b>\$288,332 **</b>
<b>Grand Total</b>	<b>\$512,961</b>	<b>\$560,729</b>	<b>\$613,291 **</b>

\* Overhead excluded.

\*\* Estimate only, using last year's revenue figure for the Affiliated Hospitals

## ACADEMIC LINKS BETWEEN THE UNIVERSITY OF TORONTO AND INTERNATIONAL INSTITUTIONS

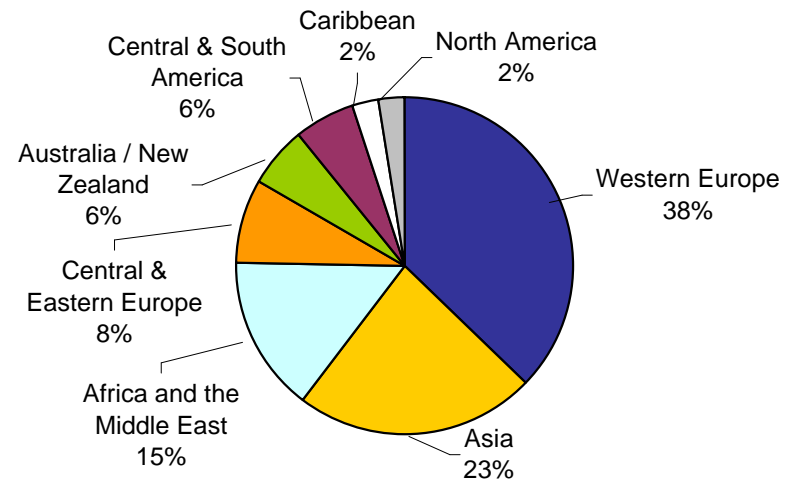
September 2004

REGION	NUMBER OF MOU'S*
Western Europe	45
Asia	28
Africa and the Middle East	18
Central & Eastern Europe	10
Australia / New Zealand	7
Central & South America	7
Caribbean	3
North America	3
<b>Total</b>	<b>121</b>

\*MOU's: Memoranda of Understanding are formal arrangements between institutions, which outline how they plan to cooperate over a specified period of time (normally, five years).

The areas included in MOU's are:

- joint research activities,
- participation in each institution's seminars and academic meetings,
- exchange of academic materials,
- short-term academic programs, and
- exchange of students.



## TECHNOLOGY TRANSFER ACTIVITIES

### INVENTION DISCLOSURES

	<b>2001-2002</b>	<b>2002-2003</b>	<b>2003-2004</b>
Number of Inventions Disclosed*	122	138	164
Gross Royalties			
Innovations Foundation	\$1,356,033	\$1,177,995	\$1,660,674
Other	532,961	1,777,064	1,707,892
<b>Total Gross Royalties</b>	<b>\$1,888,994</b>	<b>\$2,955,059</b>	<b>\$3,368,566</b>

\* Excluding affiliated hospital inventions.

### SPIN-OFF COMPANIES

	<b>2001-2002</b>	<b>2002-2003</b>	<b>2003-2004</b>
Number of Active companies	94	96	100
Number of Employees in Canada	4,264	3,638	3,638 **
Reported Annual Revenue	\$640,000,000	\$821,000,000	\$821,000,000 **

\*\* As new survey was not conducted for 2003-04, 2002-03 data are shown.

## TECHNOLOGY TRANSFER ACTIVITIES (continued)

### INDUSTRIAL CONTRACTS AND GRANTS\*

(April 2002 - March 2003)

Contracts	\$40,023,258
Grants	\$18,498,547
<b>Total industrial research funding</b>	<b>\$58,521,805</b>

### GOVERNMENT FUNDING LEVERAGED BY INDUSTRIAL COLLABORATION\*

<b>Networks of Centres of Excellence</b> (April 2002 - March 2003)	UofT participated in 19 of 20	\$9,589,093
<b>Ontario Centres of Excellence</b> (April 2002 - March 2003)	UofT participated in 4 of 4	\$6,459,041
<b>Ontario Research and Development Challenge Fund</b> (April 2002 - March 2003)		\$15,045,750
<b>Federal Granting Councils:</b> (April 2003 - March 2004)		
<b>NSERC</b>	University/Industry Programs**	\$3,409,168
<b>CIHR</b>	University/Industry Programs**	\$2,034,096
<b>Total government funding leveraged by industrial collaboration</b>		<b>\$36,537,148</b>

\* Includes the affiliated hospitals.

\*\* Excludes the Networks of Centres of Excellence.

Note that no university/industry funding was received from SSHRC by the University in 2003-04.

# Part D

## Students

Enrolment by Campus and Faculty/College	32
Enrolment: Age and Gender Balance	34
International Students Enrolment by Geographic Origin	35
International Students by Geographic Origin: 5 Year Trend	37
Ten Year Enrolment Trends, All Students	40
Gender Balance of Graduate and Undergraduate Enrolments by Field of Study	41
Undergraduate Intake by Faculty	42
Graduate Intake by Faculty	43
Total Intake	44
Degrees Awarded by Gender	45
Tuition Fees:	
a) Domestic and International Students	45
b) Self-Funded Programs	49
c) OISE/UT Schools	50

## ENROLMENT BY CAMPUS AND FACULTY/COLLEGE

November 1, 2003

FACULTY/COLLEGE BY CAMPUS	UNDERGRADUATE			GRADUATE DEGREES/ GRADUATE DIPLOMAS			ALL STUDENTS		FTE STUDENTS		
	Full- Time	Part- Time	% Female	Full- Time	Part- Time	% Female	Total	% Female	Under- graduate	Graduate	Total
<b>St. George Campus</b>											
Applied Science & Engineering	3,944	128	27	1,155	274	24	5,501	26	4,119	1,237	5,356
Architecture Landscape & Design	---	---	---	254	1	43	255	43	---	254	254
Arts & Science	21,097	3,706	59	2,456	166	47	27,425	58	20,119	2,507	22,626
Dentistry	340	1	52	101	2	39	444	49	341	102	443
Forestry	---	---	---	101	4	49	105	49	---	102	102
Graduate Centres & Institutes	---	---	---	225	38	65	263	65	---	236	236
Information Studies	---	---	---	246	130	59	376	59	---	285	285
Law	563	54	51	112	9	48	738	51	596	115	711
Management	---	---	---	591	256	32	847	32	---	669	669
Medicine	3,154	0	48	1,820	145	61	5,119	53	3,154	1,864	5,018
Music	435	15	58	113	11	56	574	57	470	116	587
Nursing	283	7	90	138	243	96	671	93	284	211	495
Occupational Therapy	---	---	---	118	0	98	118	98	---	118	118
OISE/UT	1,242	2,443	76	1,281	1,006	76	5,972	76	1,772	1,583	3,354
Pharmacy	717	3	73	87	22	55	829	70	742	94	836
Physical Education & Health	473	23	68	39	6	67	541	68	460	41	501
Physical Therapy	---	1	100	121	3	84	125	84	1	122	122
Social Work	---	---	---	251	59	87	310	87	---	269	269
Transitional Year Program	66	176	67	---	---	---	242	67	96	---	96
Woodsworth Certificate and Diploma Programs	36	159	73	0	6	100	201	74	84	2	86
<b>Total St. George</b>	<b>32,350</b>	<b>6,716</b>	<b>57</b>	<b>9,209</b>	<b>2,381</b>	<b>56</b>	<b>50,656</b>	<b>57</b>	<b>32,239</b>	<b>9,925</b>	<b>42,165</b>



**ENROLMENT BY CAMPUS AND FACULTY/COLLEGE (continued)**

November 1, 2003

FACULTY/COLLEGE BY CAMPUS	UNDERGRADUATE			GRADUATE DEGREES/ GRADUATE DIPLOMAS			ALL STUDENTS		FTE STUDENTS		
	Full- Time	Part- Time	% Female	Full- Time	Part- Time	% Female	Total	% Female	Under- graduate	Graduate	Total
<b>U of T at Mississauga</b>											
Arts & Science	7,456	812	60	137	0	62	8,405	60	6,691	137	6,828
Management	---	---	---	98	46	58	144	58	---	112	112
<b>Total U of T at Mississauga</b>	<b>7,456</b>	<b>812</b>	<b>60</b>	<b>235</b>	<b>46</b>	<b>60</b>	<b>8,549</b>	<b>60</b>	<b>6,691</b>	<b>249</b>	<b>6,940</b>
<b>U of T at Scarborough</b>											
Arts & Science	7,206	829	60	49	1	64	8,085	60	6,637	49	6,686
Graduate, all other faculties	---	---	---	7	0	14	7	14	---	7	7
<b>Total Scarborough</b>	<b>7,206</b>	<b>829</b>	<b>60</b>	<b>56</b>	<b>1</b>	<b>58</b>	<b>8,092</b>	<b>60</b>	<b>6,637</b>	<b>56</b>	<b>6,693</b>
<b>Grand Total</b>	<b>47,012</b>	<b>8,357</b>	<b>58</b>	<b>9,500</b>	<b>2,428</b>	<b>56</b>	<b>67,297</b>	<b>58</b>	<b>45,568</b>	<b>10,230</b>	<b>55,798</b>

Note: Excludes 736 FTE students in the Toronto School of Theology students

Effective the Summer Session of 2003, there was a change in the definition for Full-Time/Part-time students in Arts & Science and UTM.

	HEADCOUNT	FTE
First Entry Undergraduate	46,366	38,594
Doctoral Stream Graduate	7,307	6,949
Undergraduate Professional	9,003	6,974
Graduate Professional	4,621	3,281
<b>Total</b>	<b>67,297</b>	<b>55,798</b>

**ENROLMENT: AGE AND GENDER BALANCE****1993 vs. 2003***November 1*

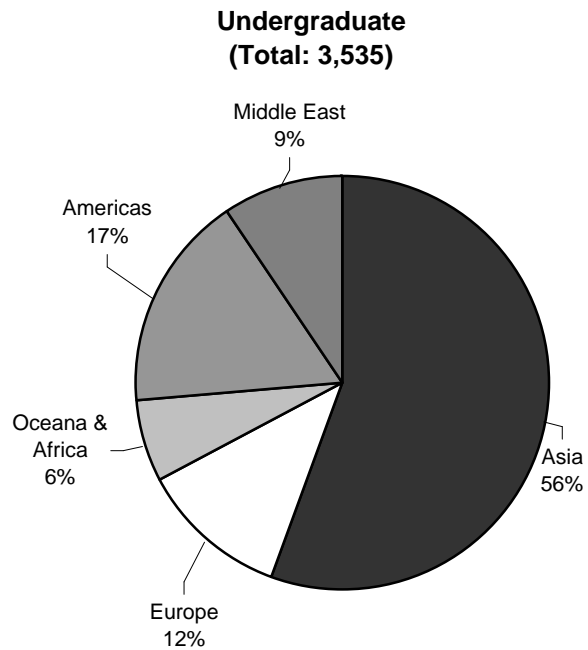
	1993			2003		
	Male	Female	Total	Male	Female	Total
<b>Full-Time Undergraduate</b>						
Number	14,555	15,921	30,476	20,283	26,729	47,012
Percent	47.8%	52.2%	100.0%	43.1%	56.9%	100.0%
Median Age	21.0	20.6	20.8	21.3	21.2	21.2
<b>Full-Time Graduate</b>						
Number	3,351	2,726	6,077	4,387	5,113	9,500
Percent	55.1%	44.9%	100.0%	46.2%	53.8%	100.0%
Median Age	27.6	27.0	27.2	28.5	28.3	28.4
<b>Part-Time Undergraduate</b>						
Number	5,198	8,442	13,640	3,033	5,324	8,357
Percent	38.1%	61.9%	100.0%	36.3%	63.7%	100.0%
Median Age	24.9	27.3	26.2	26.1	29.4	28.1
<b>Part-Time Graduate</b>						
Number	1,026	980	2,006	876	1,552	2,428
Percent	51.1%	48.9%	100.0%	36.1%	63.9%	100.0%
Median Age	29.8	30.6	30.1	33.2	34.8	34.3

Note: 2003 data excludes 9 full-time undergraduate students, 3 part-time undergraduate students.

Effective the Summer Session of 2003, there was a change in the definition for Full-Time/Part-time students in Arts & Science and UTM.

**INTERNATIONAL STUDENTS BY GEOGRAPHIC ORIGIN**

2003-2004

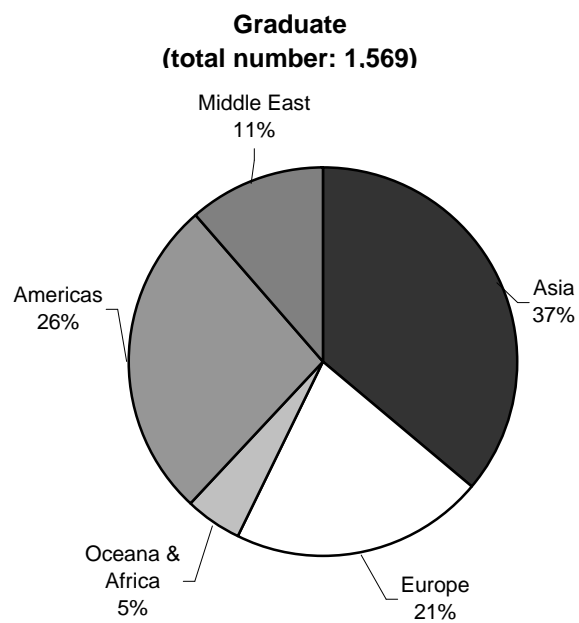


Top 3 Countries in each Region			
	Country	Count	% of Undergraduate
Asia	China & Hong Kong	787	22.3
	Korea (South)	302	8.6
	India	170	4.8
Europe	United Kingdom	99	2.8
	England	43	1.2
	Germany	35	1.0
Oceana	Australia	66	1.9
	New Zealand	12	0.3
	-	-	-
Africa	Kenya	30	0.9
	Nigeria	20	0.6
	Tanzania	19	0.5
Americas	U.S.A	393	11.1
	Trinidad & Tobago	35	1.0
	Jamaica	25	0.7
Middle East	Saudi Arabia	78	2.2
	Israel	62	1.8
	United Arab Emirates	34	1.0

Note: In 2003-04, the largest percentage of undergraduate international students were from China including Hong Kong (22.3%) followed by the USA (11.1%).

**INTERNATIONAL STUDENTS BY GEOGRAPHIC ORIGIN (continued)**

2003-2004



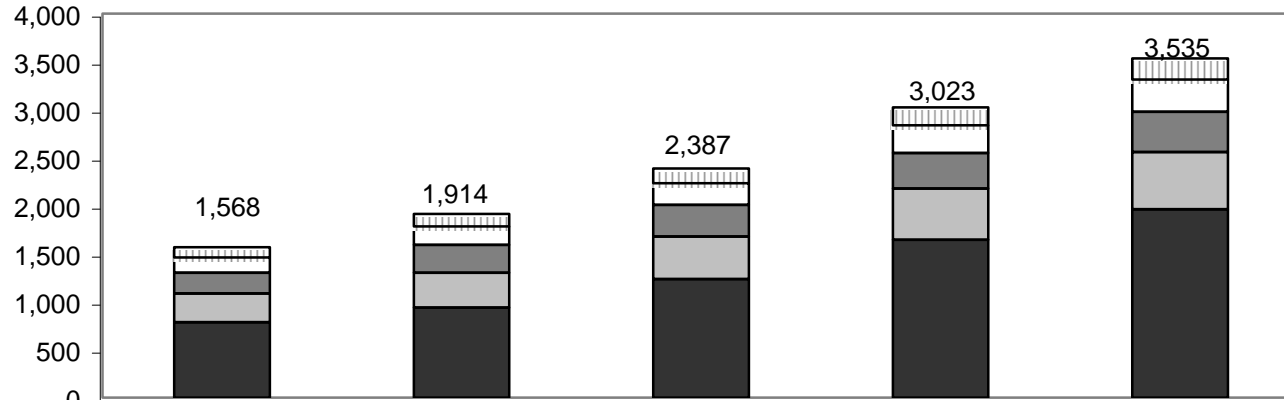
Top 3 Countries in each Region			
	Country	Count	% of Graduate
Asia	China & Hong Kong	308	19.6
	India	66	4.2
	Japan	50	3.2
Europe	Germany	59	3.8
	Romania	36	2.3
	United Kingdom	35	2.2
Oceana	New Zealand	17	1.1
	Australia	11	0.7
	Papua New Guinea	1	0.1
Africa	Ghana	9	0.6
	Nigeria	9	0.6
	South Africa	8	0.5
Americas	U.S.A.	262	16.7
	Mexico	46	2.9
	Colombia	19	1.2
Middle East	Iran	87	5.5
	Israel	33	2.1
	Turkey	17	1.1

Note: In 2003-04, the largest percentage of graduate international students were from China including Hong Kong (19.6%) followed by the USA (16.7%).

**International Students by Geographic Origin: 5-Year Trend  
1999 to 2003**

as at November 1

**Undergraduate Students**



	1999	2000	2001	2002	2003
□ Oceana & Africa	110	134	158	189	225
□ Middle East	157	191	222	287	334
■ Europe	220	287	329	370	418
■ Americas	298	364	443	532	597
■ Asia	784	938	1,235	1,645	1,961

In 1999-2000 the largest percentage of undergraduate international students were from Hong Kong (11.2%) followed by the USA (11.1%)

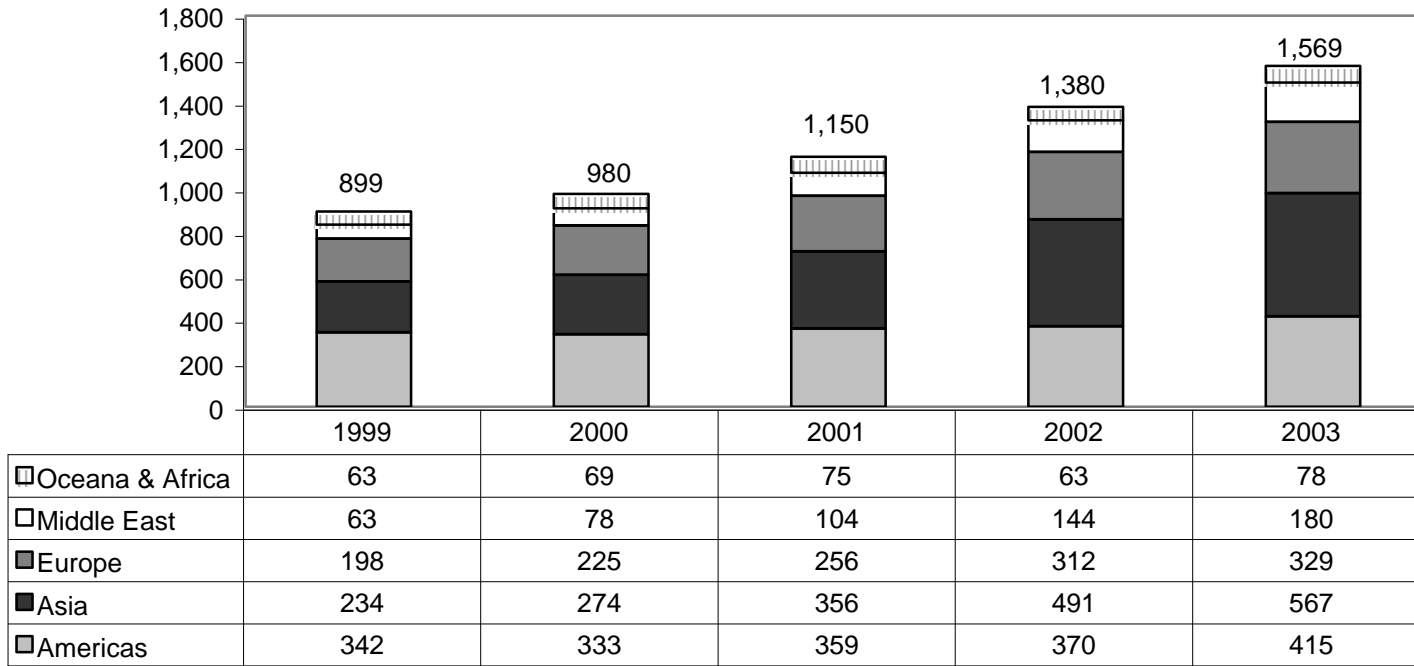
In 2003-04, the largest percentage of undergraduate international students were from China including Hong Kong (22.3%)

**International Students by Geographic Origin: 5-Year Trend (continued)**

**1999 to 2003**

as at November 1

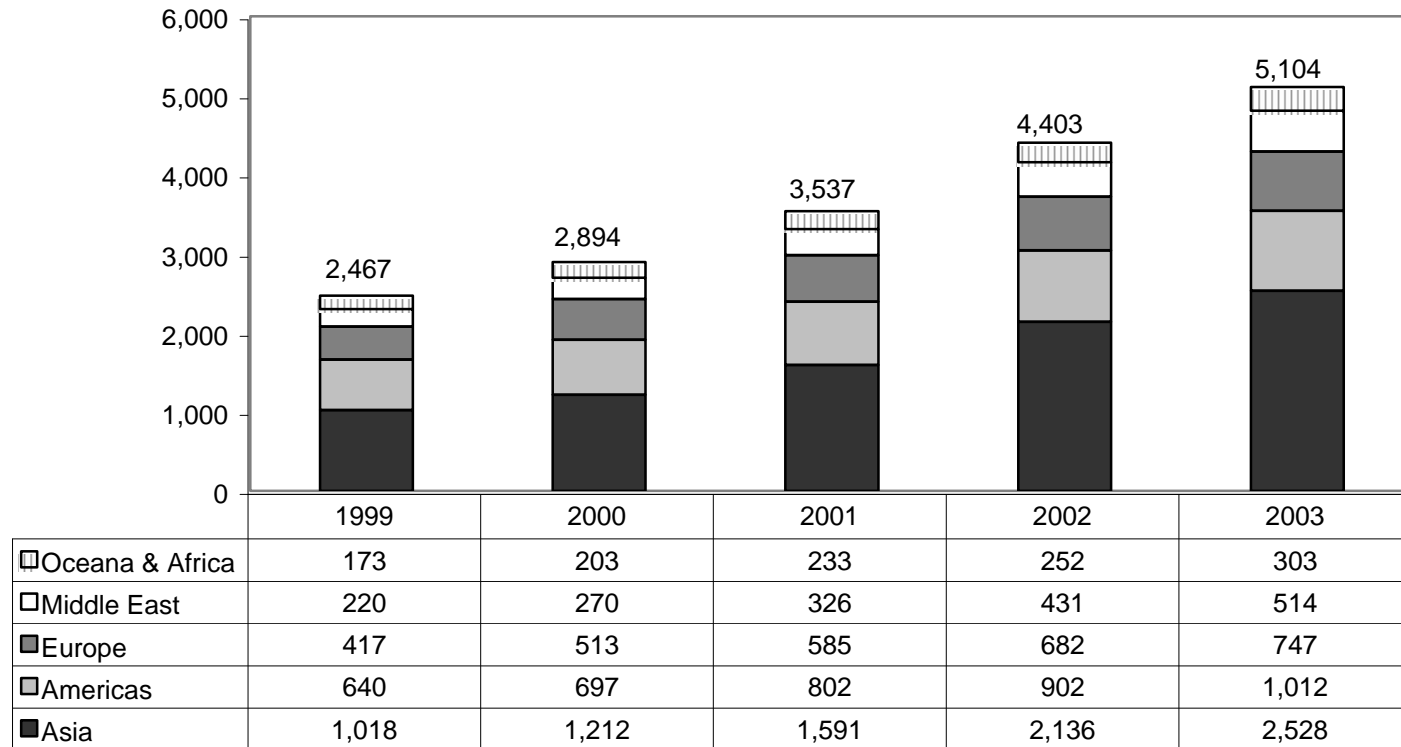
**Graduate Students**



Over one-third of graduate international students were from two countries - USA (24.7% in 1999-2000 and 16.7% in 2003-04) and China including Hong Kong (9.6% in 1999-00 and 19.6% in 2003-04).

**International Students by Geographic Origin: 5-Year Trend (continued)**  
**1999 to 2003**  
*as at November 1*

**Total International Students**



## TEN YEAR ENROLMENT TRENDS, ALL STUDENTS

1994-2003

November 1

	TOTAL STUDENTS*				INTERNATIONAL STUDENTS			
	Undergraduate		Graduate		Undergraduate		Graduate	
	Total	% Female	Total	% Female	Total	% Female	Total	% Female
1994	42,352	55.3%	10,078	53.1%	1,622	46.3%	1,111	38.6%
1995	42,395	55.7%	9,881	53.5%	1,332	44.7%	933	36.0%
1996	42,359	56.3%	9,886	53.4%	1,203	43.2%	823	37.8%
1997	42,362	56.8%	9,874	54.1%	1,141	41.3%	817	37.0%
1998	43,139	56.9%	9,658	54.9%	1,266	43.3%	822	39.1%
1999	44,234	56.8%	9,898	54.8%	1,568	44.4%	899	40.6%
2000	44,964	56.8%	10,163	55.4%	1,914	45.7%	980	40.9%
2001	47,265	57.6%	10,775	56.0%	2,387	47.7%	1,150	42.3%
2002	50,403	57.3%	11,597	56.1%	3,023	49.7%	1,380	43.9%
2003	55,369	57.9%	11,928	55.9%	3,535	49.9%	1,569	41.9%

\* Total students includes domestic students and international students.

Note: Excludes students in the Toronto School of Theology.



**GENDER BALANCE OF UNDERGRADUATE AND GRADUATE ENROLMENTS  
BY FIELD OF STUDY**

*November 1, 2003*

<b>STATISTICS CANADA FIELD OF STUDY</b>	<b>UNDERGRADUATE</b>		<b>GRADUATE</b>	
	<b>Total</b>	<b>% Female</b>	<b>Total</b>	<b>% Female</b>
Biological Sciences	3,858	64%	415	57%
Education & Physical Education	4,430	76%	2,329	76%
Engineering & Applied Sciences	4,201	28%	1,760	28%
Fine & Applied Arts	1,278	68%	250	61%
General Arts and Science	10,891	62%	0	n/a
Health Professions	5,068	55%	2,502	67%
Humanities	6,565	62%	1,366	59%
Math & Physical Sciences	3,581	33%	862	32%
Social Sciences	13,623	61%	2,444	51%
Not Specified	1,874	58%	0	n/a
<b>Total</b>	<b>55,369</b>	<b>58%</b>	<b>11,928</b>	<b>56%</b>

Notes: Education & Physical Education includes the Faculty of Physical Education and Health and the Ontario Institute for Studies in Education.  
Excludes students in the Toronto School of Theology.  
Most of the "not specified" group includes first year and special students in Arts and Science.

## UNDERGRADUATE INTAKE BY FACULTY

Fall, 2003

	TOTAL HEADCOUNT					PERCENTAGE OF TOTAL HEADCOUNT				
	GTA Area	Other Ontario	Other Canada	Inter-national	Total	GTA	Other Ontario	Other Canada	Inter-national	Total
<b>Arts &amp; Science</b>										
Mississauga	2,244	309	53	158	2,764	81.2%	11.2%	1.9%	5.7%	100%
Scarborough	2,545	111	39	137	2,832	89.9%	3.9%	1.4%	4.8%	100%
St George	5,372	624	237	688	6,921	77.6%	9.0%	3.4%	9.9%	100%
<b>Total Arts &amp; Science</b>	<b>10,161</b>	<b>1,044</b>	<b>329</b>	<b>983</b>	<b>12,517</b>	<b>81.2%</b>	<b>8.3%</b>	<b>2.6%</b>	<b>7.9%</b>	<b>100%</b>
Applied Science	970	112	75	76	1,233	78.7%	9.1%	6.1%	6.2%	100%
Dentistry	44	11	9	3	67	65.7%	16.4%	13.4%	4.5%	100%
Law	84	25	45	19	173	48.6%	14.5%	26.0%	11.0%	100%
OISE/UT	1,074	408	24	2	1,508	71.2%	27.1%	1.6%	0.1%	100%
<b>Medicine</b>										
B Sc (Med. Radiation Science)	29	25	11	3	68	42.6%	36.8%	16.2%	4.4%	100%
MD	62	46	19	0	127	48.8%	36.2%	15.0%	0.0%	100%
Post Grad Medical Education	n.a.	n.a.	n.a.	n.a.	n.a.	n.a.	n.a.	n.a.	n.a.	n.a.
<b>Total, Medicine</b>	<b>91</b>	<b>71</b>	<b>30</b>	<b>3</b>	<b>195</b>	<b>46.7%</b>	<b>36.4%</b>	<b>15.4%</b>	<b>1.5%</b>	<b>100%</b>
Music	82	21	17	10	130	63.1%	16.2%	13.1%	7.7%	100%
Nursing	60	40	14	2	116	51.7%	34.5%	12.1%	1.7%	100%
Pharmacy	39	49	18	0	106	36.8%	46.2%	17.0%	0.0%	100%
Physical Education and Health	123	20	3	5	151	81.5%	13.2%	2.0%	3.3%	100%
<b>Total Undergraduate</b>	<b>12,728</b>	<b>1,801</b>	<b>564</b>	<b>1,103</b>	<b>16,196</b>	<b>78.6%</b>	<b>11.1%</b>	<b>3.5%</b>	<b>6.8%</b>	<b>100%</b>

Notes: Excludes Transitional Year Program and Woodsworth diploma & certificate programs.

Intake data is not available for Post-Graduate Medical Education.

## GRADUATE INTAKE BY FACULTY

Fall, 2003

	TOTAL HEADCOUNT					PERCENTAGE OF TOTAL HEADCOUNT				
	GTA Area	Other Ontario	Other Canada	Inter-national	Total	GTA	Other Ontario	Other Canada	Inter-national	Total
Forestry	18	3	0	4	25	72.0%	12.0%	0.0%	16.0%	100%
Information Studies	140	19	14	15	188	74.5%	10.1%	7.4%	8.0%	100%
Management	238	15	31	48	332	71.7%	4.5%	9.3%	14.5%	100%
OISE / UT	300	53	15	18	386	77.7%	13.7%	3.9%	4.7%	100%
<b>School of Graduate Studies</b>										
Div I Humanities	205	39	51	97	392	52.3%	9.9%	13.0%	24.7%	100%
Div II Social Sciences	198	46	56	107	407	48.6%	11.3%	13.8%	26.3%	100%
Div III Physical Sciences	365	67	81	191	704	51.8%	9.5%	11.5%	27.1%	100%
Div IV Life Sciences	636	145	64	66	911	69.8%	15.9%	7.0%	7.2%	100%
Social Work	109	33	13	2	157	69.4%	21.0%	8.3%	1.3%	100%
<b>Diplomas</b>										
Health Administration	0	0	1	0	1	0.0%	0.0%	100.0%	0.0%	100%
Operatic Performance	2	2	1	0	5	40.0%	40.0%	20.0%	0.0%	100%
<b>Total Graduate</b>	<b>2,211</b>	<b>422</b>	<b>327</b>	<b>548</b>	<b>3,508</b>	<b>63.0%</b>	<b>12.0%</b>	<b>9.3%</b>	<b>15.6%</b>	<b>100.0%</b>

Includes Graduate diplomas in Medicine and Music.

## TOTAL INTAKE

Fall, 2003

	TOTAL HEADCOUNT					PERCENTAGE OF TOTAL HEADCOUNT				
	GTA Area	Other Ontario	Other Canada	Inter-national	Total	GTA	Other Ontario	Other Canada	Inter-national	Total
Total Undergraduate	12,728	1,801	564	1,103	16,196	78.6%	11.1%	3.5%	6.8%	100%
Total Graduate	2,211	422	327	548	3,508	63.0%	12.0%	9.3%	15.6%	100%
<b>Grand Total</b>	<b>14,939</b>	<b>2,223</b>	<b>891</b>	<b>1,651</b>	<b>19,704</b>	<b>75.8%</b>	<b>11.3%</b>	<b>4.5%</b>	<b>8.4%</b>	<b>100%</b>

## UNIVERSITY OF TORONTO DEGREES AWARDED BY GENDER

Calendar Year 2003

STATISTICS CANADA FIELD OF STUDY*	UNDERGRADUATE		MASTERS		DOCTORAL		TOTAL	
	Total	% Female	Total	% Female	Total	% Female	Total	% Female
Humanities	1,709	64%	367	65%	95	51%	2,171	64%
Social Sciences	4,039	67%	1,295	65%	192	63%	5,526	67%
Physical Sciences	1,792	36%	605	29%	137	16%	2,534	33%
Life Sciences	1,556	64%	542	77%	149	52%	2,247	66%
<b>Total</b>	<b>9,096</b>	<b>60%</b>	<b>2,809</b>	<b>59%</b>	<b>573</b>	<b>47%</b>	<b>12,478</b>	<b>59%</b>

\* The category 'Humanities' is the sum of Humanities and Fine & Applied Arts

The category 'Social Sciences' is the sum of Social Sciences and Education & Physical Education

The category 'Physical Sciences' is the sum of Math & Physical Sciences and Engineering & Applied Sciences

The category 'Life Sciences' is the sum of Health Professions and Agricultural & Biological Sciences

Note: Excludes Toronto School of Theology, Certificate and Diploma students.

## TUITION FEE SCHEDULE FOR DOMESTIC AND INTERNATIONAL STUDENTS

2004-2005

	DOMESTIC STUDENTS 2004 Entering Cohort	INTERNATIONAL STUDENTS 2004 Entering Cohort
<b>APPLIED SCIENCE &amp; ENGINEERING</b>		
Bachelors	\$7,000	\$15,369
Master of Engineering M.Eng.	\$6,737	\$13,815
<b>ARCHITECTURE, LANDSCAPE, AND DESIGN</b>		
Master of Architecture M. Arch.	\$6,431	\$13,494
Master of Landscape Architecture M.L.A.	\$6,431	\$13,494
Master of Urban Design M.U.D.	\$6,431	\$13,494
<b>ARTS &amp; SCIENCE incl. SCARBOROUGH</b>		
Bachelors	\$4,185	\$11,276
*Bachelors - Computer Science and Communication Culture & Information Technology	\$4,185	\$11,276
*Bachelors - Commerce/Bus Admin	\$4,185	\$11,276
*Bachelors - Mgt UTM	\$4,185	\$11,276
*Bachelors - UTSC - Joint Programs with Centennial	\$4,185	\$11,276
Master of Science in Planning M.Sc.Pl.	\$6,431	\$10,743
Master of Urban Design Studies M.U.D.S.	\$6,431	\$10,743
Masters of Spatial Analysis - Joint Program with Ryerson M.S.A.	\$6,431	\$10,743
Master of Biotechnology M.Biotech.	\$8,925	\$16,721
Master of Visual Studies M.V.S.	\$5,442	\$9,704

\*For Arts and Science students in programs with additional cost recovery fees beginning in Year 2 the fee shown for Entering Year is the Arts and Science fee charged to all students in Year 1.

**TUITION FEE SCHEDULE FOR DOMESTIC AND INTERNATIONAL STUDENTS (continued)**

2004-2005

	<b>DOMESTIC STUDENTS 2004 Entering Cohort</b>	<b>INTERNATIONAL STUDENTS 2004 Entering Cohort</b>
<b>DENTISTRY</b>		
Doctor of Dental Surgery D.D.S.	\$17,950	\$32,235
Bachelors of Science in Dentistry B.Sc. Dent	\$5,367	\$13,354
Dental Hygiene, BDH/Diploma - Joint Program with George Brown College	\$8,500	\$16,000
Graduate Specializations except Dental Public Health	\$13,781	\$24,725
M.Sc. Specialty in Dental Public Health	\$6,737	\$13,815
Combined Specialization/PhD (Except Dental Public Health)	\$9,611	\$17,214
Combined Specialization/PhD in Dental Public Health	\$5,960	\$11,348
Dental Residents - M.O.H. Funded		
MSc Oral & Maxillofacial Surgery & Anaesthesia and Oral Pathology & Oral Medicin	\$1,604	na
MSc Oral Pathology and Oral Medicine	\$2,031	na
Dental Residents - non-M.O.H. Funded	\$17,950	\$32,235
<b>Forestry</b>		
Master of Forest Conservation M.F.C.	\$6,136	\$13,184
<b>INFORMATION STUDIES</b>		
Master of Information Studies M.I.St.	\$6,136	\$13,184
<b>LAW</b>		
J.D.	\$16,000	\$24,352
Masters in Studies in Law M.S.L.	\$5,442	\$9,704
Master of Laws L.L.M.	\$5,442	\$13,000
<b>MANAGEMENT</b>		
M.B.A.	\$25,000	\$34,554
Master of Financial Economics M.F.E	\$17,850	\$23,468
Master of Management & Professional Accounting M.M.P.A.	\$19,000	\$22,050

**TUITION FEE SCHEDULE FOR DOMESTIC AND INTERNATIONAL STUDENTS (continued)**

2004-2005

	<b>DOMESTIC STUDENTS 2004 Entering Cohort</b>	<b>INTERNATIONAL STUDENTS 2004 Entering Cohort</b>
<b>MEDICINE</b>		
Doctor of Medicine M.D.	\$16,207	\$30,405
Postgraduate Medical Trainees	\$0	\$26,022
Health Science Diplomas	\$6,737	\$13,815
Radiation Sciences	\$4,731	\$15,750
M.Sc. Occupational Therapy and Physical Therapy	\$6,737	\$13,815
Master of Health Science	\$6,737	\$13,815
Master of Science in Biomedical Communications M.Sc.BMC.	\$6,737	\$13,815
Combined MD/PhD	\$10,825	\$20,055
<b>MUSIC</b>		
Undergraduate	\$4,185	\$12,627
Operatic Performance Diploma	\$5,948	\$10,235
Mus.M. (Performance)	\$5,948	\$10,235
Mus.M. (Other)	\$5,442	\$9,704
Advanced Certificate in Performance	\$5,948	\$10,235
<b>NURSING</b>		
Bachelor of Science in Nursing B.Sc.N	\$5,616	\$12,638
Master of Nursing M.N.	\$6,136	\$13,184
<b>OISE/UT</b>		
Bachelor of Education B.Ed.	\$4,643	\$13,109
Technical & Vocational Certificates	\$4,643	\$13,109
Joint Master of Teaching in Human Devt and Curriculum	\$6,737	\$13,815
M.A. in Child Study	\$6,737	\$13,815
Master of Education M.Ed.	\$6,737	\$13,815
Doctor of Education Ed.D.	\$6,364	\$13,690

**TUITION FEE SCHEDULE FOR DOMESTIC AND INTERNATIONAL STUDENTS (continued)**

2004-2005

	<b>DOMESTIC STUDENTS 2004 Entering Cohort</b>	<b>INTERNATIONAL STUDENTS 2004 Entering Cohort</b>
<b>PHARMACY</b>		
Bachelor of Science in Pharmacy B.Sc.Pharm.	\$9,840	\$18,566
Doctor of Pharmacy Pharm.D.	\$25,350	\$25,350
<b>PHYSICAL EDUCATION AND HEALTH</b>		
Bachelor of Physical Education & Helath B.P.E.H	\$4,185	\$12,627
<b>S.G.S. (annual fee)</b>		
Doctoral Stream	\$5,442	\$9,704
<b>S.G.S. CENTERS AND INSTITUTES</b>		
Master of Industrial Relations M.I.R.	\$6,737	\$13,815
Master of Museum Studies M.M.St.	\$6,737	\$14,000
<b>SOCIAL WORK</b>		
Master of Social Work M.S.W.	\$6,136	\$13,184
<b>TRANSITIONAL YEAR PROGRAM</b>		
Regular	\$3,557	na
Extended	\$1,779	na
<b>WOODSWORTH</b>		
Woodsworth Certificates	\$4,185	\$11,276
Diploma in Gerontology	\$6,737	\$13,494



**TUITION FEE SCHEDULE FOR SELF-FUNDED PROGRAMS**

2004-2005

---

	<b>2004 ENTERING COHORT</b>
Masters of Engineering in Telecommunications	\$25,000
Masters of Engineering in Design & Manufacturing Course Fee	\$2,500
Summer Program in Medieval Latin	
Domestic	\$650
International	\$500.00 (U.S.)
Masters of Mathematical Finance	\$30,000
Executive Masters of Business Administration	\$75,000
Executive Masters of Business Administration (OMNIUM GEMBA)	54,000 (U.S.)
Diploma in Forensic Accounting	\$7,500
Faculty of Dentistry Qualifying Program	\$36,470
Sponsored Medical Trainees	\$26,022
Visiting MD Student Course Fee	
1-2 weeks	\$220
3-4 weeks	\$290
5-6 weeks	\$360
7-8 weeks	\$440
Nurse Practitioner Certificate Full Course Fee	\$852
Nurse Practitioner Certificate Half Course Fee	\$426
Nurse Practitioner Integrated Practicum Course Fee	\$1,704
OISE/UT- Additional Qualifications Course	\$865
OISE/UT - Diploma in Holocaust/Genocide Studies Course Fee	\$1,011

---

**TUITION FEE SCHEDULE FOR OISE/UT SCHOOLS**

*2004-2005*

	<b>2004-05</b>
Laboratory School - Half Day Program	\$4,995
Laboratory School - Full Day Program	\$7,790
Laboratory School - Bloorview MacMillan	\$7,475

# Part E

## Graduates

Graduates by Region	52
Number of Degrees Awarded by College or Faculty Affiliation	53
Overall Fundraising Achievement	54
Overall Fundraising Achievement: Source of Donations	55

## GRADUATES BY REGION

2004

	LIVING	PERCENTAGE OF LIVING	TOTAL*
<b>Canada</b>			
Ontario			
Metro Toronto	180,375	44.4%	194,320
Central Ontario	105,515	26.0%	112,026
Southwestern Ontario	21,694	5.3%	25,679
Eastern Ontario	20,515	5.1%	23,842
Northern Ontario	7,690	1.9%	8,835
Rest of Canada			
British Columbia	10,407	2.6%	11,860
Alberta	5,866	1.4%	6,351
Quebec	4,828	1.2%	5,450
Nova Scotia	2,230	0.5%	2,519
Manitoba	1,888	0.5%	2,190
Saskatchewan	1,370	0.3%	1,637
New Brunswick	1,029	0.3%	1,164
Newfoundland	953	0.2%	1,030
Prince Edward Island	287	0.1%	331
Northwest Territories	250	0.1%	283
Yukon Territory	109	-	113
Nunavut	26	-	26
Unknown within Canada	4,480	1.1%	32,105
<b>Canada Total</b>	<b>369,512</b>	<b>91.0%</b>	<b>429,761</b>
<b>United States Total</b>	20,439	5.0%	24,059
<b>International Total</b>	15,812	3.9%	17,033
<b>Unknown</b>	273	-	273
<b>Grand Total</b>	<b>406,036</b>	<b>100.0%</b>	<b>471,126</b>

\*Total includes living graduates and deceased graduates, and is included to give a historical context of the total number of individuals who graduated from the University of Toronto.

### Notes:

Unique Number of graduates (living plus deceased) is 471,126  
Regional Breakdown is based on data as at Sept. 24, 2004

**NUMBER OF DEGREES AWARDED  
BY COLLEGE OR FACULTY AFFILIATION**

2004

	NUMBER OF DEGREES AWARDED	PERCENTAGE OF TOTAL
<b>Arts &amp; Science Programs</b>		
<i><b>Constituent Colleges:</b></i>		
Innis College	6,758	1.2%
New College	16,465	3.0%
University College	44,525	8.2%
Woodsworth College	16,699	3.1%
<b>Total Constituent Colleges</b>	<b>84,447</b>	<b>15.6%</b>
<i><b>Federated Colleges:</b></i>		
St. Michael's College	28,436	5.2%
Trinity College	17,221	3.2%
Victoria College	37,655	6.9%
<b>Total Federated Colleges</b>	<b>83,312</b>	<b>15.4%</b>
University of Toronto at Mississauga	28,544	5.3%
University of Toronto at Scarborough	26,630	4.9%
<b>Total Arts &amp; Science Programs</b>	<b>222,933</b>	<b>41.1%</b>
Applied Science & Engineering	44,132	8.1%
Architecture, Landscape & Design	3,317	0.6%
Dentistry	10,558	1.9%
Forestry	2,753	0.5%
Graduate Studies/		
Graduate Institutes & Centres	91,932	16.9%
Information Studies	5,659	1.0%
Joseph L. Rotman School of Management	9,060	1.7%
Law	7,321	1.3%
Medicine, Doctor of	14,293	2.6%
Other Medicine	13,853	2.6%
Music	4,751	0.9%
Nursing	9,713	1.8%
OISE/UT:		
Undergraduate	44,466	8.2%
Graduate	21,668	4.0%
Institute of Child Study	2,040	0.4%
Pharmacy	10,222	1.9%
Physical & Occupational Therapy	6,380	1.2%
Physical Education & Health	4,652	0.9%
Social Work	7,146	1.3%
Woodsworth Certificate & Diploma	5,769	1.1%
<b>Total</b>	<b>542,618</b>	<b>100.0%</b>

Notes:

All honorary degrees are excluded.

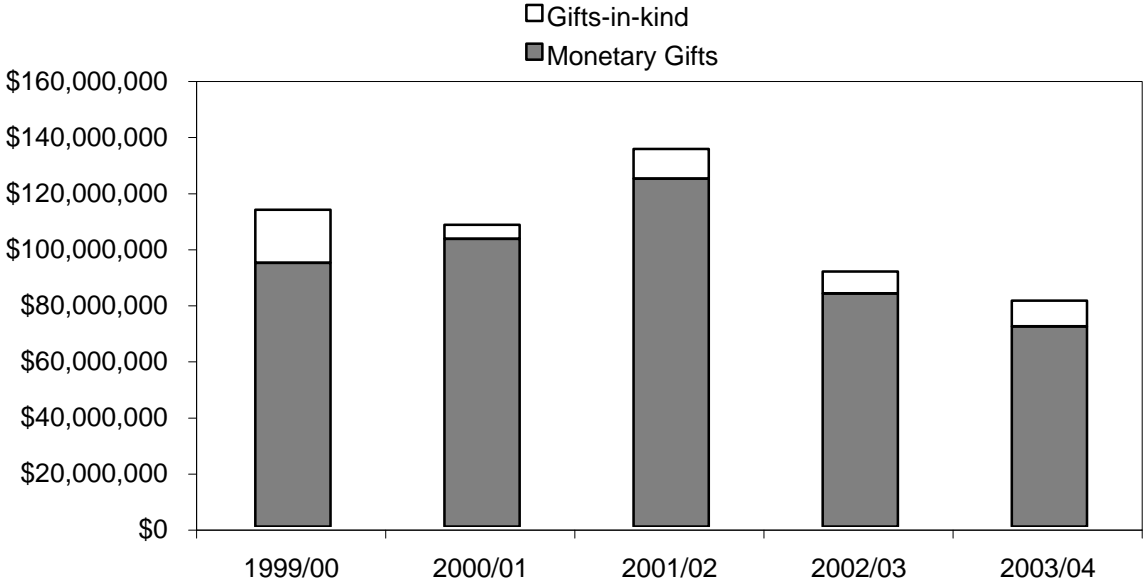
Graduates with multiple degrees are counted each time they occur in a constituency.

A single degree may be counted in more than one constituency.

Does not include Toronto School of Theology.

**OVERALL FUNDRAISING ACHIEVEMENT**

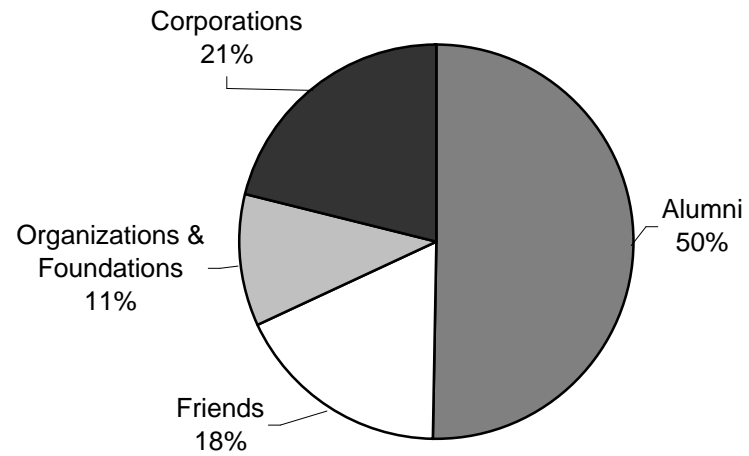
1999-2000 to 2003-2004



Notes: Monetary gifts are based on actual payments received.  
The above donations include those receipted by the University of Toronto and those receipted by the University of St. Michael's College, University of Trinity College and Victoria University.

**OVERALL FUNDRAISING ACHIEVEMENT**  
**SOURCE OF DONATIONS**

*May 1, 2003 - April 30, 2004*



Note: Figures are based on payments received by the University of Toronto, the University of St. Michael's College, University of Trinity College and Victoria University.

# Part F

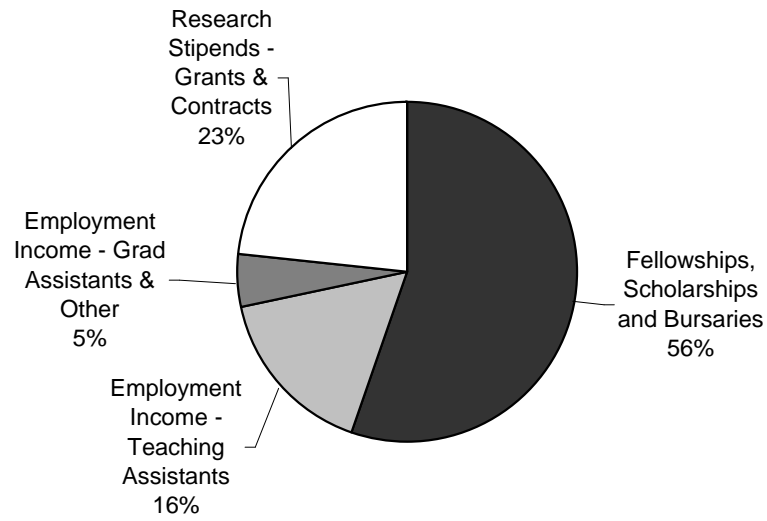
## Student Awards

Graduate Student Support by Source	58
Graduate Student Support by S.G.S. Division	58
Undergraduate Student Support : Admission Scholarships, In-Course Scholarships and Bursaries by Faculty and College	59
OSAP and University of Toronto Advanced Planning for Students program (UTAPS) by Faculty and College	60



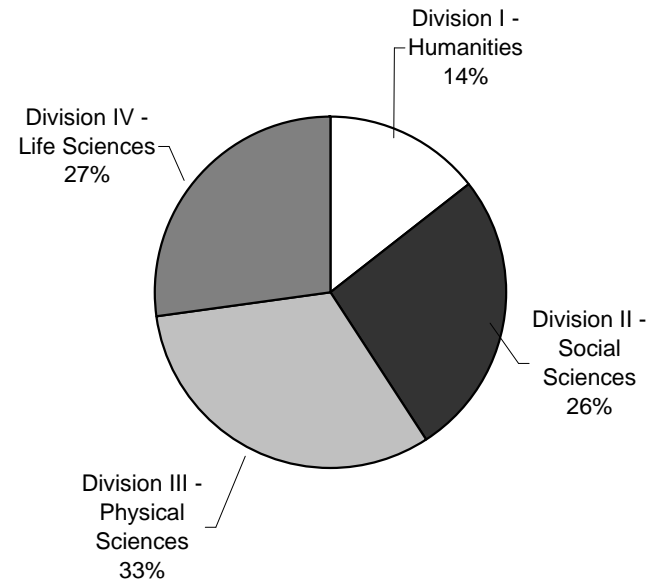
**GRADUATE STUDENT SUPPORT BY SOURCE**  
2003-2004

**Total \$136,808,743\***



**GRADUATE STUDENT SUPPORT BY SCHOOL OF GRADUATE STUDIES DIVISION**  
2003-2004

**Total \$136,808,743\***



\*Does not include updated information on research stipends from affiliated teaching hospitals.

**UNDERGRADUATE STUDENT SUPPORT:  
ADMISSION SCHOLARSHIPS, IN-COURSE SCHOLARSHIPS AND BURSARIES  
2003-2004**

FACULTY / COLLEGE	ADMISSION SCHOLARSHIPS		IN-COURSE SCHOLARSHIPS		BURSARIES	
	Number	Value	Number	Value	Number	Value
Applied Science and Engineering	273	910,858	211	396,285	1,865	5,186,907
Dentistry	0	0	67	47,507	232	679,509
Innis College	45	164,333	211	157,605	305	553,071
Law	21	37,660	108	75,905	713	1,885,763
Medicine	2	504	287	174,710	999	2,148,784
Mississauga, University of Toronto at	305	512,290	154	120,261	1,111	2,032,515
Music	21	50,954	97	132,536	164	322,700
New College	78	147,968	137	123,832	803	1,743,349
Nursing	12	23,792	23	17,083	189	516,445
OISE/UT Undergraduate	12	32,377	25	24,979	474	1,224,084
Pharmacy	20	13,629	82	48,229	787	1,369,437
Physical Education and Health	8	18,000	55	20,204	100	134,135
Radiation Sciences	0	0	0	0	118	223,282
Scarborough, University of Toronto at	138	212,861	272	224,948	1,443	3,232,744
St. Michael's College	68	136,959	178	219,708	616	1,145,120
Transitional Year Program	0	0	14	3,962	169	594,457
Trinity College	136	327,759	309	259,594	343	692,614
University College	253	635,985	461	494,804	973	2,194,065
Victoria College	176	547,766	532	783,219	757	1,320,714
Woodsworth College	57	58,600	141	100,455	1,700	3,171,185
<b>Total</b>	<b>1,625</b>	<b>\$3,832,296</b>	<b>3,364</b>	<b>\$3,425,826</b>	<b>13,861</b>	<b>\$30,370,880</b>

## OSAP AND UTAPS BY FACULTY AND COLLEGE

2003-2004

FACULTY / COLLEGE	OSAP APPLICANTS AS A PERCENTAGE OF FULL-TIME ENROLMENT		OSAP		UTAPS	
			Number	Value	Number	Value
Applied Science and Engineering	44%		1,460	9,165,041	1,352	4,017,323
Dentistry	69%		179	1,758,282	177	615,422
Innis College	31%		357	2,546,433	124	278,000
Law	44%		217	1,667,858		
Management	30%		160	1,255,407		
Medicine	81%		583	5,727,121	437	1,328,008
Mississauga, University of Toronto at	38%		2,263	14,861,022	593	1,343,550
Music	30%		103	747,444	33	91,550
New College	40%		1,128	7,687,938	328	810,850
Nursing	56%		147	1,667,853	66	258,450
OISE/UT Graduate	18%		189	1,858,802	138	565,331
OISE/UT Undergraduate	38%		397	3,791,441	173	532,950
Pharmacy	57%		342	2,348,497	312	725,820
Physical Education and Health	33%		109	666,919	17	42,550

**OSAP AND UTAPS BY FACULTY AND COLLEGE** (continued)  
2003-2004

<b>FACULTY / COLLEGE</b>	<b>OSAP APPLICANTS</b>		<b>OSAP</b>		<b>UTAPS</b>	
	<b>AS A PERCENTAGE OF</b>	<b>Number</b>	<b>Value</b>	<b>Number</b>	<b>Value</b>	
	<b>FULL-TIME ENROLMENT</b>					
Radiation Sciences	13%	41	392,620	45	124,950	
Scarborough, University of Toronto at	48%	2,877	18,526,666	747	2,118,314	
School of Graduate Studies	14%	755	6,852,213	596	1,925,086	
St. Michael's College	30%	945	6,262,840	224	486,750	
Transitional Year Program	83%	52	526,248	31	104,750	
Trinity College	30%	321	2,208,621	102	256,900	
University College	35%	1,078	7,665,415	327	805,850	
Victoria College	35%	985	6,813,998	279	630,200	
Woodsworth College	46%	1,417	11,272,052	474	1,185,945	
<b>Total</b>	<b>36%</b>	<b>16,105</b>	<b>\$116,270,731</b>	<b>6,575</b>	<b>\$18,248,549</b>	

Notes: UTAPS for School of Graduate Studies are also included in the totals shown in Graduate Student Support by Graduate Studies Division  
 UTAPS at Law and Management is distributed as part of their grants programs and are not included above.  
 UTAPS data in this table refer to grants awarded to OSAP recipients only.  
 Dental Residents and Post-Graduate Medicine students are excluded.

# Part G

## Faculty and Administrative Staff

Distribution of Full-Time Appointed Tenured/Tenure Stream Faculty by Major Division and Main Appointment	64
Distribution of Full-Time Tenured/Tenure Stream Faculty by Rank and Gender	65
Age Distribution of Tenured/Tenure Stream Faculty	65
Distribution of Full and Part Time ( $\geq 25\%$ ) Academic Staff and Librarians by Rank and Gender	66
Distribution of Full Time and Part Time Administrative and Union Staff	68
Operating Fund Full-Time Equivalent Staff	69

**DISTRIBUTION OF FULL-TIME APPOINTED TENURED/TENURE  
STREAM FACULTY BY MAJOR DIVISION AND MAIN APPOINTMENT**

All Sources of Funding

October 2003

DIVISION			%	TOTAL
	MALE	FEMALE	FEMALE	
Applied Science and Engineering	182	14	7.1%	196
Architecture, Landscape, and Design	9	1	10.0%	10
Arts and Science*	483	173	26.4%	656
Dentistry	38	6	13.6%	44
Education (OISE/UT)	61	78	56.1%	139
Forestry	11	3	21.4%	14
Information Studies	5	9	64.3%	14
Law	34	18	34.6%	52
Management**	59	11	15.7%	70
Medicine	122	63	34.1%	185
Mississauga, University of Toronto at	121	45	27.1%	166
Music	18	9	33.3%	27
Nursing	1	21	95.5%	22
Pharmacy	15	9	37.5%	24
Physical Education and Health	10	5	33.3%	15
Scarborough, University of Toronto at	107	47	30.5%	154
School of Graduate Studies	12	5	29.4%	17
Social Work	8	12	60.0%	20
<b>Total</b>	<b>1,296</b>	<b>529</b>	<b>29.0%</b>	<b>1,825</b>

\* Arts & Science includes Transitional Year Program and the St. George campus colleges  
(Innis, New, University, Woodsworth, St. Michael's, Trinity, Victoria Colleges)

\*\* Management only contains Joseph L. Rotman School of Management

**DISTRIBUTION OF FULL-TIME TENURED/TENURE STREAM FACULTY  
BY RANK AND GENDER**

All Sources of Funding

October 2003

<b>RANK</b>	<b>MALE</b>	<b>FEMALE</b>	<b>% FEMALE</b>	<b>TOTAL</b>
Professor	691	157	18.5%	848
Associate Professor	360	217	37.6%	577
Assistant Professor	238	152	39.0%	390
Assistant Professor (conditional)	7	3	30.0%	10
<b>Total</b>	<b>1,296</b>	<b>529</b>	<b>29.0%</b>	<b>1,825</b>

Note: Includes Faculties of Medicine and Dentistry.

**AGE DISTRIBUTION OF TENURED/TENURE STREAM FACULTY**

October 2003

<b>RANK</b>	<b>AVERAGE AGE</b>
Professor	54.9
Associate Professor	47.7
Assistant Professor	36.7
Assistant Professor (conditional)	31.4

Note: Total number of Full-time Tenured/Tenure Stream Faculty = 1,825

**DISTRIBUTION OF FULL AND PART-TIME (>=25%) ACADEMIC  
STAFF AND LIBRARIANS BY RANK AND GENDER**

All Sources of Funding  
October 2003

RANK	FULL-TIME			Total
	Male	Female	%	
Professor	825	181	18.0%	1,006
Associate Professor	493	261	34.6%	754
Assistant Professor	337	230	40.6%	567
Assistant Professor (cond)	7	3	30.0%	10
Lecturer (medical)	3	6	66.7%	9
Instructor	6	4	40.0%	10
Senior Lecturer/Lecturer	92	122	57.0%	214
Senior Tutor/Tutor	36	45	55.6%	81
<b>Sub-Total</b>	<b>1,799</b>	<b>852</b>	<b>32.1%</b>	<b>2,651</b>
Librarian	39	97	71.3%	136
<b>Total</b>	<b>1,838</b>	<b>949</b>	<b>34.1%</b>	<b>2,787</b>

RANK	PART-TIME			Total
	Male	Female	%	
Professor	38	10	20.8%	48
Associate Professor	43	13	23.2%	56
Assistant Professor	40	38	48.7%	78
Assistant Professor (cond)	0	0		0
Lecturer (medical)	2	11	84.6%	13
Instructor	0	0		0
Senior Lecturer/Lecturer	64	73	53.3%	137
Senior Tutor/Tutor	12	7	36.8%	19
<b>Sub-Total</b>	<b>199</b>	<b>152</b>	<b>43.3%</b>	<b>351</b>
Librarian	2	9	81.8%	11
<b>Total</b>	<b>201</b>	<b>161</b>	<b>44.5%</b>	<b>362</b>



**DISTRIBUTION OF FULL AND PART-TIME (>=25%) ACADEMIC  
STAFF AND LIBRARIANS BY RANK AND GENDER Continued**

All Sources of Funding  
October 2003

RANK	TOTAL			Total
	Male	Female	%	
Professor	863	191	18.1%	1,054
Associate Professor	536	274	33.8%	810
Assistant Professor	377	268	41.6%	645
Assistant Professor (cond)	7	3	30.0%	10
Lecturer (medical)	5	17	77.3%	22
Instructor	6	4	40.0%	10
Senior Lecturer/Lecturer	156	195	55.6%	351
Senior Tutor/Tutor	48	52	52.0%	100
<b>Sub-Total</b>	<b>1,998</b>	<b>1,004</b>	<b>33.4%</b>	<b>3,002</b>
Librarian	41	106	72.1%	147
<b>Total</b>	<b>2,039</b>	<b>1,110</b>	<b>35.2%</b>	<b>3,149</b>

Notes: Includes Faculty of Medicine and Dentistry.  
Includes both tenured/tenure stream and non-tenure stream  
professorial staff.

## DISTRIBUTION OF FULL-TIME AND PART-TIME ADMINISTRATIVE AND UNION STAFF

September 2003

EMPLOYEE GROUP	FULL-TIME			PART-TIME			ALL		
	Male	Female	Total	Male	Female	Total	Male	Female	Total
<b>Non-Unionized Employees</b>									
ESL Instructor	11	16	27	0	5	5	11	21	32
Research Associate	123	65	188	12	9	21	135	74	209
USWA-exempt Admin staff*	290	437	727	3	36	39	293	473	766
<b>Total non-unionized employees</b>	<b>424</b>	<b>518</b>	<b>942</b>	<b>15</b>	<b>50</b>	<b>65</b>	<b>439</b>	<b>568</b>	<b>1,007</b>
<b>Unionized Employees</b>									
Library	58	124	182	9	14	23	67	138	205
Operating Engineers	74	1	75	0	0	0	74	1	75
Police	29	13	42	0	0	0	29	13	42
Research Associates & Officers OISE/UT	5	16	21	0	0	0	5	16	21
Service Workers	313	220	533	9	3	12	322	223	545
Teaching Assistants**	0	0	0	1,699	1,498	3,197	1,699	1,498	3,197
Trades and Services***	58	1	59	0	0	0	58	1	59
USWA Admin staff*	869	1,931	2,800	40	225	265	909	2,156	3,065
<b>Total unionized employees</b>	<b>1,406</b>	<b>2,306</b>	<b>3,712</b>	<b>1,757</b>	<b>1,740</b>	<b>3,497</b>	<b>3,163</b>	<b>4,046</b>	<b>7,209</b>
<b>Total</b>	<b>1,830</b>	<b>2,824</b>	<b>4,654</b>	<b>1,772</b>	<b>1,790</b>	<b>3,562</b>	<b>3,602</b>	<b>4,614</b>	<b>8,216</b>

\* Excludes Non University of Toronto Departments.

\*\* Includes 194 OISE Graduate Assistants

\*\*\* Trades and Services includes Machinists, Carpenters, Electrical Workers, Sheet Metal Workers, Plumbers, Pipefitters, and Painters.

**OPERATING FUND FULL-TIME EQUIVALENT STAFF**

2004-05

<b>DIVISION</b>	<b>ACADEMIC</b>	<b>ADMINISTRATIVE*</b>
Applied Science and Engineering	231.19	194.75
Architecture, Landscape, and Design	24.12	18.70
Arts & Science**	870.93	434.77
Colleges***	17.76	101.7
Dentistry	82.54	153.31
Forestry	14.60	7.00
Graduate Centres and Institutes	25.89	33.12
Information Studies	16.00	19.20
Law	50.66	62.50
Management	87.11	106.51
Medicine	751.84	372.72
Mississauga, University of Toronto at	230.72	93.31
Music	49.75	28.25
Nursing	41.35	24.65
OISE/UT	196.35	148.70
Pharmacy	36.46	22.50
Physical Education and Health	17.78	7.70
Scarborough, University of Toronto at	223.68	76.12
School of Continuing Studies	0.00	62.75
School of Graduate Studies	5.69	42.40
Social Work	23.00	9.80
Transitional Year Program	10.00	2.50
<b>Subtotal</b>	<b>3,007.42</b>	<b>2,022.96</b>
Academic Services	4.00	560.40
Campus and Student Services	11.93	294.42
Central Administration	14.30	772.45
Facilities and Services	0.00	652.29
Other Academic Costs	0.28	1.00
<b>Grand Total</b>	<b>3,037.93</b>	<b>4,303.52</b>

**Notes:**

\*Librarians and Union staff are included in the Administrative group.

\*\*Arts and Science includes Innis, New, St. Michael's, University College Programs related to Arts & Science.

\*\*\*Colleges include Innis, Munk Centre, New, University, Woodsworth programs and resources independent of Arts & Science

# Part H

## Library

Library Collections	72
Number of Loans	73
Number of Computers in the Library	73
Digital Library E-Resources	73
Number of Electronic Articles Downloaded	74

## LIBRARY COLLECTIONS

2003-2004

There are 32 libraries in the University of Toronto Library System.

<b>COLLECTIONS *</b>	<b>CENTRAL LIBRARIES</b>	<b>LOCAL LIBRARIES</b>	<b>SCARBOROUGH/ MISSISSAUGA</b>	<b>FEDERATED/ AFFILIATED</b>	<b>DIGITAL LIBRARY**</b>	<b>TOTAL</b>
Books	7,276,203	1,024,511	613,683	1,218,207	29,208	10,161,812
Cartographic Materials	241,608	8	38,350	327		280,293
CD-ROM (Bibliog & Text)	2,936	448	146	449		3,979
Computer Data Files	240,574	458	0	11		241,043
Films & Videos	22,515	1,885	408	1,090		25,898
Graphic Materials	210,175	372,610	63,355	70,895		717,035
Microforms	5,004,727	131,520	37,561	125,913		5,299,721
Music Scores		64,127	803			64,930
Sound Recording	9,704	176,673	3,936	2,441		192,754
Other Formats	29,099	97,073	276	513		126,961
<b>Total</b>	<b>13,037,541</b>	<b>1,869,313</b>	<b>758,518</b>	<b>1,419,846</b>	<b>29,208</b>	<b>17,114,426</b>
Current Serials	21,272	6,029	2,998	2,991	27,966	61,256
Manuscripts (Metres)	10,646	27	0	116		10,789

\* Materials on transfer from Central to Local Libraries (previously included in Central Libraries' counts) are shown in the counts for Local Libraries where they are located. Bound volumes of subscriptions are included in the Book counts.

\*\* Electronic resources (Books & journals).

## NUMBER OF LOANS

2003-2004

Central Libraries	
Robarts Library	1,836,560
Gerstein Science Information Centre	484,180
OISE/UT Library	255,982
Fisher Library/Archives	20,489
Media Commons *	108,426
Branch Libraries	209,564
<b>Sub-Total</b>	<b>2,915,201</b>
Local Libraries	
UTMississauga Library	447,747
UTScarborough Library	264,937
Federated/Affiliated Libraries*	45,396
<b>Total</b>	<b>601,873</b>
<b>Total</b>	<b>4,275,154</b>

\* Media Commons includes Audio Visual Library and Microtext

## NUMBER OF COMPUTERS IN THE LIBRARY

April 30, 2004

Computers in the Network	1,815
Stand-Alone PC's	52
VT Terminals	2

## DIGITAL LIBRARY E-RESOURCES

May 14, 2004

	LICENSED**	PUBLIC***	TOTAL
Journals Indexes and Abstracts	402	64	466
Journals	24,708	2,197	26,905
Reference Sources	426	75	501
Books	21,812	6,895	28,707
Newspapers and News Services	545	50	595
<b>Total</b>	<b>47,893</b>	<b>9,281</b>	<b>57,174</b>

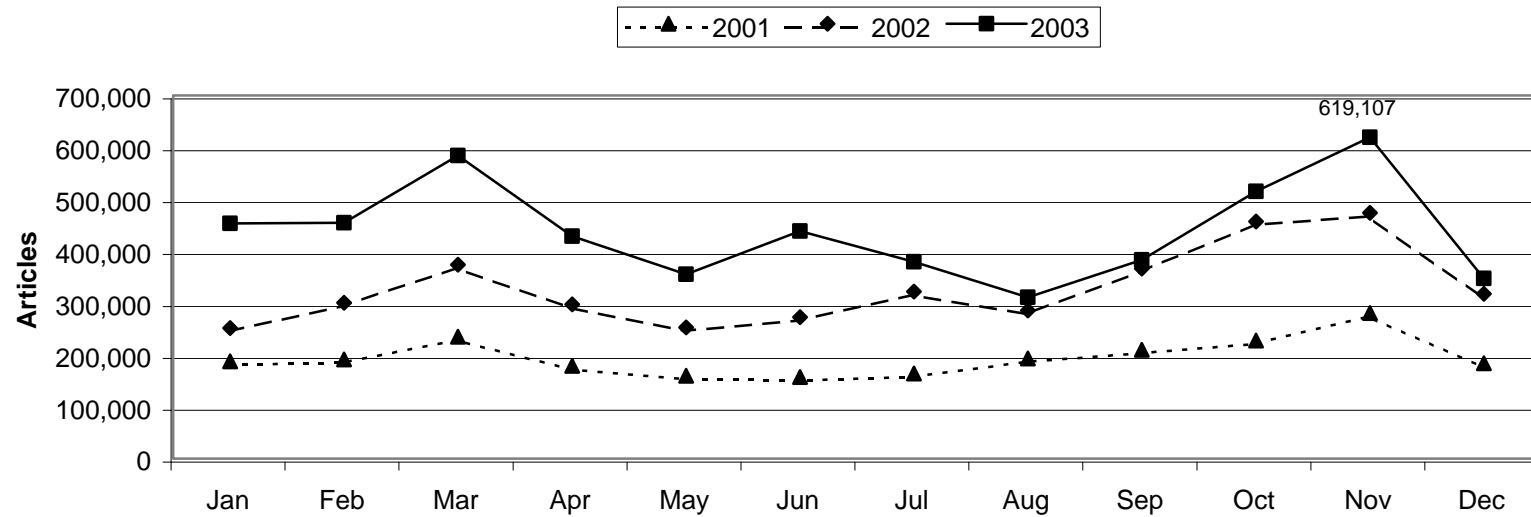
\*\* These items are available on the Internet for use by anyone.

\*\*\* These items are available on the Internet for use by anyone.

For current figures, see <http://link.library.utoronto.ca/eir/EIRsummary.cfm>

## NUMBER OF ELECTRONIC ARTICLES DOWNLOADED

2001-2003



### Notes:

1. The data for 2001 includes the following publishers, aggregators and systems not previously available:  
Highwire Press, Nature, Blackwell/Synergy
2. The data for 2002 includes the following publishers, aggregators and systems not previously available:  
Am Jnl of Physics, BioMed Central, CIAO, IEEE, JBC, Neuroscience, Oxford Univ Press
3. Data for 2003 includes the following publishers not previously available:  
AMS Allen Press, Taylor & Francis
4. Data for 2001 and 2002 adjusted to reflect revised data and data not previously available from publishers, aggregators and systems.

# Part I

## Physical Plant

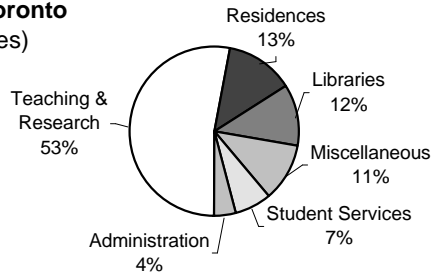
Usage of Assignable Space	76
Number of Buildings and Gross Square Metres	77
Area of U of T Properties	78
Number of Parking Spaces	78
Public Assembly Facilities	78
Number of Places in Student Residences	79



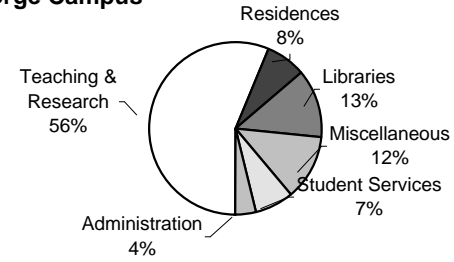
**USAGE OF ASSIGNABLE SPACE**

2003-2004

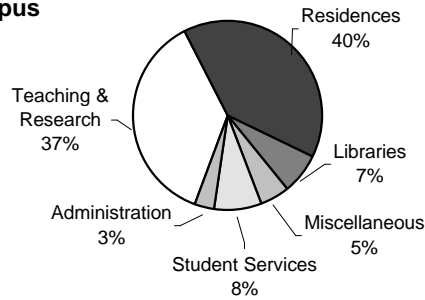
**University of Toronto  
(All Campuses)**



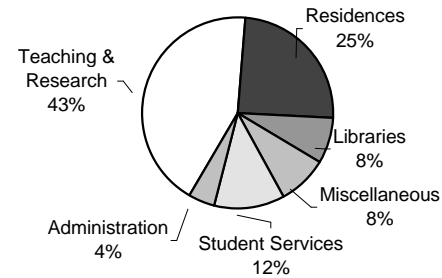
**St. George Campus**



**Mississauga Campus**



**Scarborough Campus**



Note: Student Services includes: Athletics, Food Services, Bookstore and Merchandising and Health Services.  
 Miscellaneous includes: Plant Maintenance, Assembly & Exhibition Facilities, Common Use and Student Activity and Other University Facilities.  
 Teaching and Research includes: Classrooms, Teaching and Research Laboratories, Academic Services, Health Science Clinic Facilities, Central Services and Media Services.

**NUMBER OF BUILDINGS AND SQUARE METRES**

2003-2004

	<b>NUMBER OF BUILDINGS</b>	<b>NET ASSIGNABLE SQUARE METRES</b>	<b>NET SQUARE METRES</b>	<b>GROSS SQUARE METRES</b>
<b>University</b>				
St. George	111	524,467	848,427	990,604
Leased St. George	8	4,937	6,483	7,438
Scarborough	34	58,137	87,269	102,251
Mississauga	43	72,700	109,919	126,464
<b>Total University</b>	<b>196</b>	<b>660,241</b>	<b>1,052,098</b>	<b>1,226,757</b>
<b>Federated Colleges and Massey</b>	<b>53</b>	<b>100,426</b>	<b>150,422</b>	<b>189,205</b>
<b>Grand Total</b>	<b>249</b>	<b>760,667</b>	<b>1,202,520</b>	<b>1,415,962</b>

Note: **Net Assignable Square Metres** is the sum of all areas on all floors of the building assigned to, or available for assignment to, an occupant, including every type of space functionality used by an occupant.  
**Net Square Metres** is the sum of all areas on all floors of the building, both assigned (see definition above) and non-assigned (ie corridors, stairs, mechanical rooms etc.)  
**Gross Area Square Metres** is the sum of all floors areas included within the outside faces of exterior walls, which have floor surfaces.

as at September 2004

## AREA OF U OF T PROPERTIES

2003-2004

	HECTARES
<b>CAMPUSES</b>	
Downtown Campus	
St. George	51.3
Federated Colleges and Massey	17.3
<b>Total Downtown Campus</b>	<b>68.6</b>
<b>Scarborough</b>	<b>121.5</b>
<b>Mississauga</b>	<b>90.2</b>
<b>Total Campuses</b>	<b>280.3</b>
<b>OFF CAMPUS</b>	
David Dunlap Observatory	76.9
Aerospace	11.9
Joker's Hill	346.0
<b>Total Off Campus</b>	<b>434.8</b>
<b>Grand Total</b>	<b>715.1</b>

Note: Excludes Glendon and Huron/Sussex.  
Total Downtown Campus includes St. George,  
Federated Colleges and Massey.

## NUMBER OF PARKING SPACES

2003-2004

	NUMBER OF SPACES
St. George	2,100
Scarborough	2,769
Mississauga	2,350
<b>Total</b>	<b>7,219</b>

## NUMBER OF PUBLIC ASSEMBLY FACILITIES

2003-2004

	NUMBER OF FACILITIES	SEATING CAPACITY
St. George Lecture Theatres / Hall*	44	10,337
St. George Auditorium	4	3,400
Dining Rooms and Cafeterias*	33	4,318
Varsity Arena	1	4,200

\* Including Federated Colleges.

## NUMBER OF UNIVERSITY OF TORONTO STUDENTS IN RESIDENCE

2003-2004

	NUMBER OF FIRST-YEAR STUDENTS	NUMBER OF STUDENTS	TOTAL SPACES
<b>University of Toronto Residences</b>			
<b>St. George Including Federated Universities</b>			
89 Chestnut	770	961	1,086
Charles Street Apartments*	0	777	710
Graduate House	1	438	438
Innis College	195	329	330
New College	481	867	877
St. Michael's College	334	759	773
Trinity College	221	435	435
University College	247	438	446
Victoria University	422	767	788
<b>Total St. George</b>	<b>2,671</b>	<b>5,771</b>	<b>5,883</b>
<b>University of Toronto at Mississauga</b>			
Graduate & Family Housing*	0	295	295
Undergraduate Housing	586	791	802
<b>Total U of T at Mississauga</b>	<b>586</b>	<b>1,086</b>	<b>1,097</b>
<b>University of Toronto at Scarborough</b>	<b>321</b>	<b>750</b>	<b>750</b>
<b>Total University of Toronto residences</b>	<b>3,578</b>	<b>7,607</b>	<b>7,730</b>
<b>Independent Campus Residences</b>			
Campus Co-Op	0	216	306
Knox College	1	96	104
Massey College	0	62	62
Neil-Wycik Co-Operative**	0	0	780
Primrose Hotel	7	27	27
St. Vladimir Institute	2	26	47
Tartu College	55	374	374
Wycliffe College	0	63	70
<b>Total Independent Residences</b>	<b>65</b>	<b>864</b>	<b>1,770</b>
<b>Grand Total</b>	<b>3,643</b>	<b>8,471</b>	<b>9,500</b>

\* Premises house students and their family. Some families may include 2 students.

\*\* Premises house mainly Ryerson students.

Notes: As of the beginning of the academic year.  
Includes TST students.

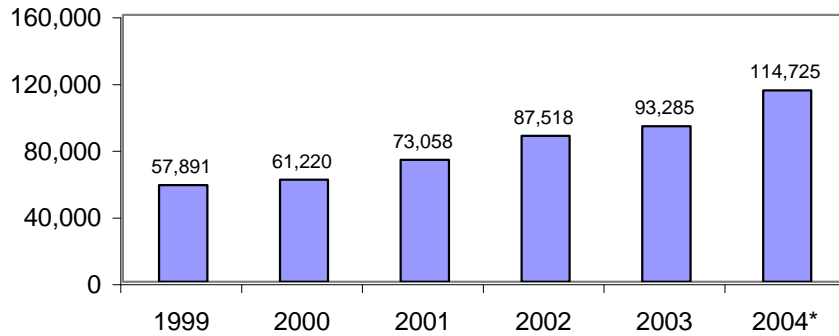
# Part J

## Computing and Communications

Number of UTORmail accounts at Year End	82
Number of Messages Delivered by UTORmail Post Office	82
Number of Web Transactions	82
Institutional Internet Dial-in Service Dial-in Modem	83
U of T/Bell Sympatico High Speed Edition (HSE)	
Campus Wireless Network	83
Usage of Electronic Student Services	84

### NUMBER OF UTORmail ACCOUNTS AT YEAR END

1999-2004

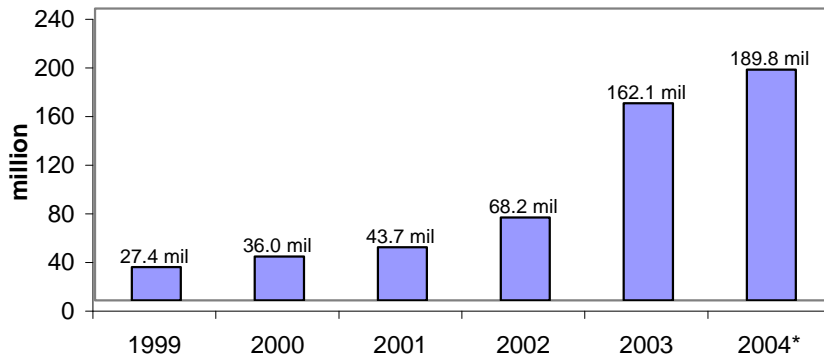


\*Note: 2004 figures represent the number of UTORmail accounts up to September 30, 2004. 1999-2003 figures are from Jan. 1 to Dec. 31.

### NUMBER OF MESSAGES DELIVERED BY UTORmail POST OFFICE

1999-2004

(In Millions)



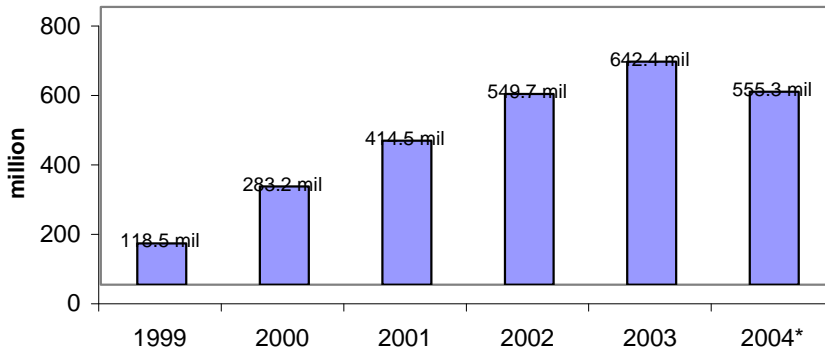
\*Note: 2004 figures represent the number of messages delivered up to September 30, 2004. 1999-2003 figures are from Jan. 1 to Dec. 31.

### NUMBER OF WEB TRANSACTIONS

For the institutional server [www.utoronto.ca](http://www.utoronto.ca)

1999-2004

(In Millions)



\*Note: 2004 figures represent the number of web transactions up to September 30, 2004. 1999-2003 figures are from Jan. 1 to Dec. 31.

## INSTITUTIONAL INTERNET DIAL-IN SERVICES

1998-2003

### Dial-in modem

Up to 56,000 bits per second

<b>Date</b>	<b>Phone Lines</b>	<b>Active Users</b>	<b>Calls per Week</b>
November 2000	663	12,500	113,000
November 2001	597	9,900	92,000
November 2002	413	7,300	68,000
October 2003	333	5,600	52,000
October 2004	255	3,900	36,000

### U of T/Bell Sympatico

#### High Speed Edition (HSE)\*

Up to 960,000 bits per second

<b>Date</b>	<b>Using UofT Network Address</b>
November 2000	237
November 2001	419
November 2002	624
October 2003	468
October 2004	275

## CAMPUS WIRELESS NETWORK\*

2000-2003

<b>Date</b>	<b>Buildings</b>	<b>Access Points</b>	<b>Sessions per Week</b>
November 2000	0	0	0
November 2001	8	56	500
November 2002	15	118	4,500
October 2003	19	143	9,800
October 2004	24	244	14,000

\*Service first became available in September 2001.

## USAGE OF ELECTRONIC STUDENT SERVICES

September 1, 2003 to August 31, 2004

---

<b>ACTIVITY</b>	<b>ROSI STUDENT WEB SERVICES rosi.utoronto.ca</b>
<b>Accessing the System</b>	
Access suspended	14,242
Change PIN	54,670
Login successfully	4,975,937
Unsuccessful attempt to change PIN	2,651
Unsuccessful attempt to login	182,124
Setup for PIN Reactivation	36,078
PIN Reactivated Successfully	24,060
Unsuccessful attempt to Reactivate PIN	7,269
<b>Maintaining Personal Information</b>	
Add new address	7,376
Add new contact information	4,325
Add new telephone number	4,614
Change address	50,600
Change contact information	3,000
Change e-mail address	23,284
Change telephone number	6,462
<b>Choosing/Changing Academic Options</b>	
Accept Subject POST	8,398
Add new Subject POST	50,879
Add academic activity	573,107
Cancel invited registration	251
Change Subject POST	7,581
Confirm graduation request	6,836
Delete Subject POST	31,077
Cancel registration/Deregister	6,983
Drop academic activity	254,616
List courses	2,419,246
Modify academic activity	244,103
<b>Requesting/Paying for Transcripts</b>	
Request transcript, add charges to student account	10,800
Request transcript, pay by credit card	24,454
Request transcript pending payment	31,514
Create electronic transcript invoice	27,319
Pay electronic transcript invoice	21,039
Unsuccessful electronic payment	2,450
<b>Participating in Campus Life</b>	
Opt out of SAC Health Insurance	32,452
Submit an electronic vote	54,568

---



## Notes

---

**Prepared by  
The Office of the Vice-Provost, Planning and Budget  
University of Toronto**

**Printed in Canada  
by University of Toronto Press  
2004**